



# OPERATING SALVAGE YARD

FOR SALE 7335 S. BROADWAY AVE., HAYSVILLE, KS 67060

**SALE PRICE**  
\$550,000

**LOT SIZE**  
564,263 SF (12.95 A)

**YEAR BUILT**  
1945, 1982, 2003

**BUILDING SIZES**  
SEE PAGE 2

**2024 TAXES**  
GENERALS: \$20,902.22  
SPECIALS: \$93.75

**ZONING**  
A & E

## PROPERTY HIGHLIGHTS

- Operated under current owner since the 1970's.
- Current salvage certificate to be transferred.
- 1 mile from I-35.
- High visibility location on Broadway Ave. in Haysville, KS.
- Heavy rock base throughout entire yard – currently partially concealed by overgrowth.
- Building A currently occupied by a month-to-month automotive tenant.



## TRAFFIC COUNTS



ALONG BROADWAY AVE.

8,118 VPD



Ben Gartner, SIOR, CCIM | 316-292-3967 | bgartner@weigand.com

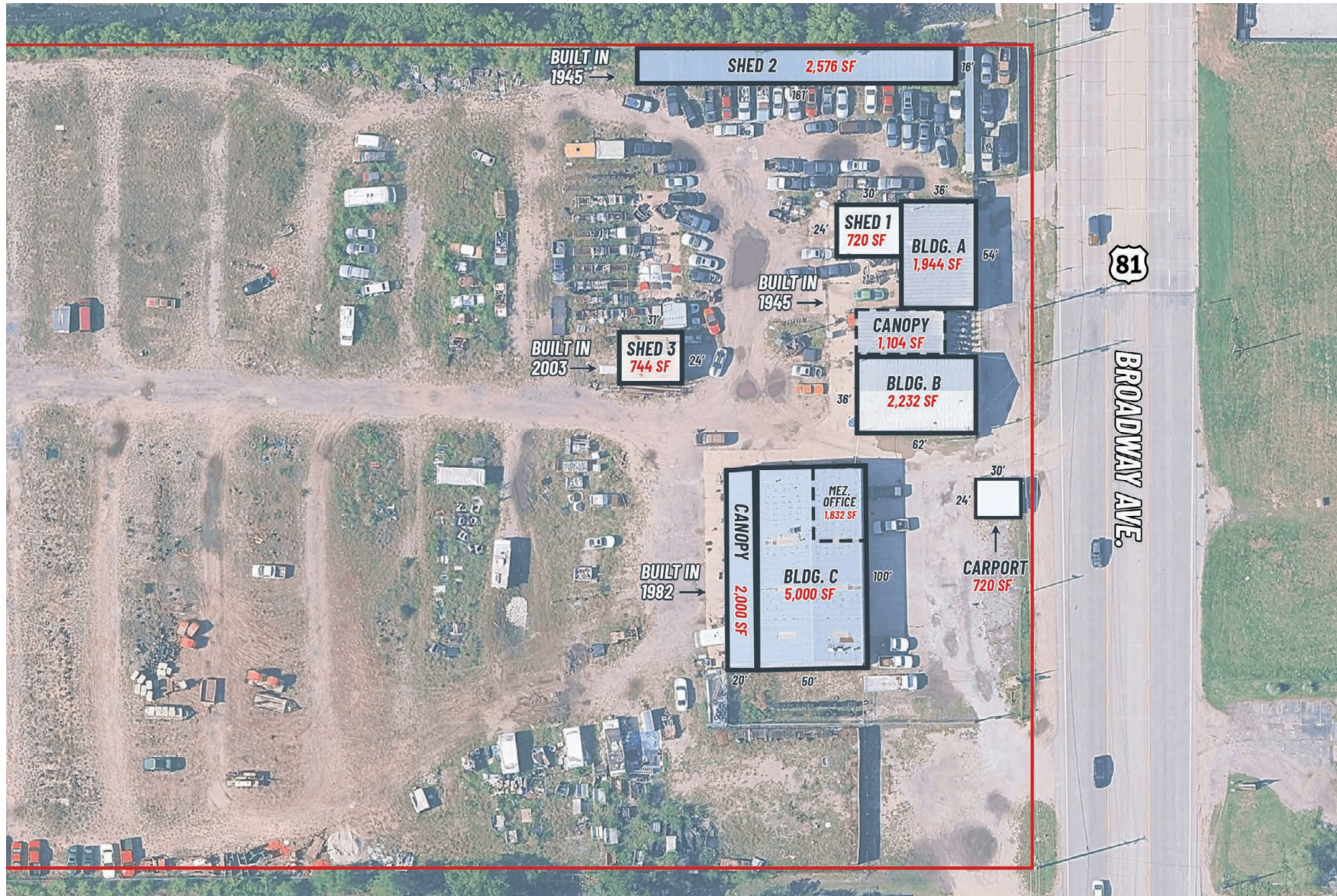
**Weigand Real Estate - Commercial**

Office: 316-262-6400

Weigand.com



**BUILDING OVERVIEW**





# OPERATING SALVAGE YARD

FOR SALE 7335 S. BROADWAY AVE., WICHITA, KS 67060

**WEIGAND**  
COMMERCIAL

## AERIAL VIEW



Ben Gartner, SIOR, CCIM | 316-292-3967 | bgartner@weigand.com

Weigand Real Estate - Commercial  
Office: 316-262-6400  
Weigand.com