



For Sale | \$3,800,000 Fee Simple

1143 BISHOP STREET HONOLULU, HI 96813

DAUGHTERS OF SAINT PAUL CONVENT BUILDING

Freestanding building located in
the heart of Downtown Honolulu.



Vanessa Kop (B)
RB-20654
808-256-0370
vkop@cbi-hawaii.com

NAI CBI Hawaii
1712 S. King Street Suite 201
Honolulu, HI 96826
808.942.7100 | www.cbi-hawaii.com





1143 Bishop Street

INVESTMENT SUMMARY

Asking Price:	\$4,200,000
Tenure:	Fee Simple
Stories:	Three-Stories and Basement
TMK:	1-2-1-10-9
Zoning:	BMX-4
Area:	Central Business District Downtown, Honolulu
Building Size:	± 19,737 SF
Lot Size:	± 5,278 SF
Year Built:	1929
Other:	Owner User Opportunity Elevator On Site

PROPERTY DESCRIPTION

NAI CBI Hawaii proudly presents 1143 Bishop Street. Formerly known as the Daughters of Saint Paul Convent Building and Bookstore. Located in the Central Business District in Downtown Honolulu, considered the center of commerce in the State of Hawaii occupied by the vast majority of the State's financial, professional, and service organizations. This iconic three-story building has been a part of Honolulu's metropolis since 1929 with renovations, alterations, and repairs made throughout the years.

This mixed-use building serves a variety of operations; the ground floor presents retail space, the second floor serves as office space, the third floor has the possibilities for a residential group-living facility, and the basement offers storage space.



Scan the QR code for
VIRTUAL TOUR

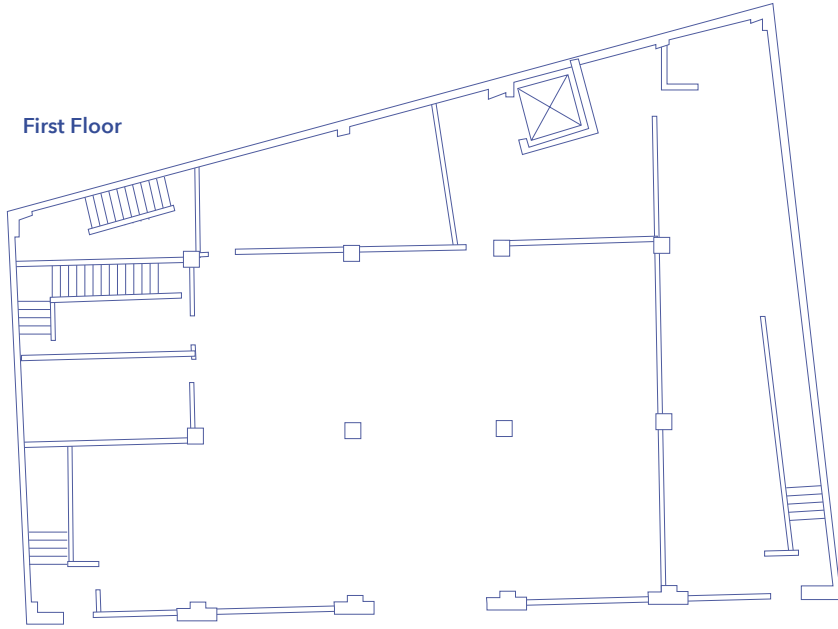


Vanessa Kop (B)
RB-20654
808-256-0370
vkop@cbi-hawaii.com

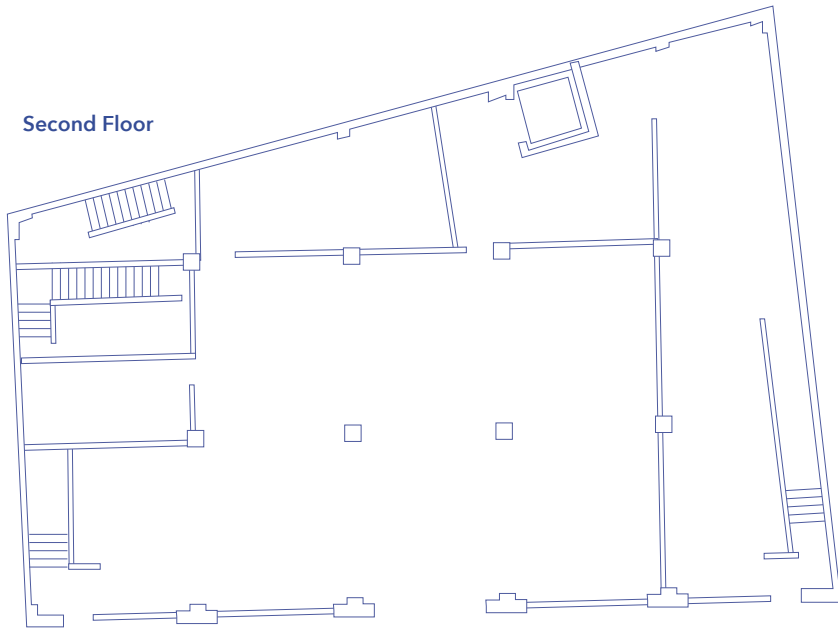
NAI CBI Hawaii
1712 S. King Street Suite 201
Honolulu, HI 96826
808.942.7100 | www.cbi-hawaii.com



First Floor



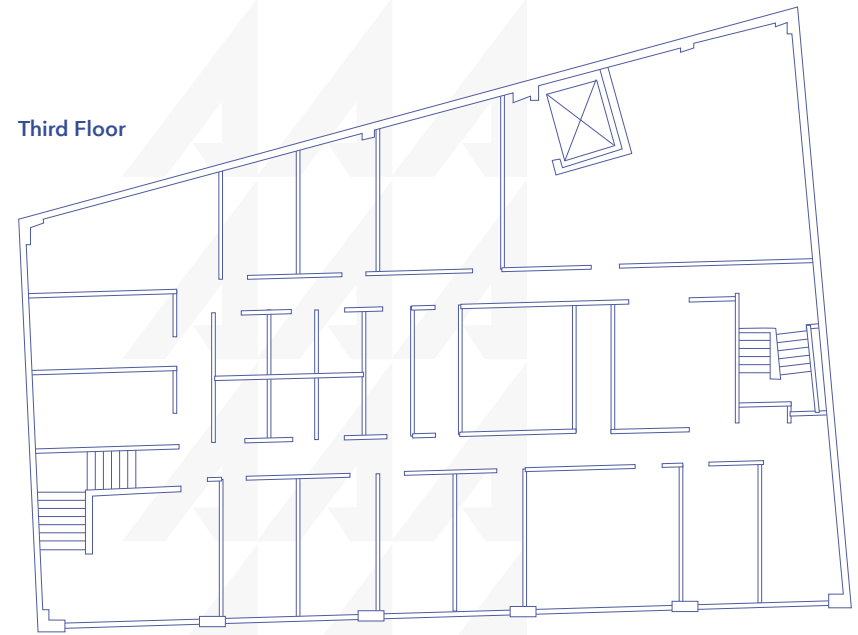
Second Floor



SPACES

1st Floor:	± 5,252 SF Retail
2nd Floor:	± 3,981 SF Office Conference Room Kitchen
3rd Floor:	± 5,252 SF Residential Group Living 11 Rooms 6 Bathrooms Kitchen
Basement:	± 5,252 SF Storage with capabilities for divided spaces
Total:	± 19,737 SF

Third Floor



Vanessa Kop (B)
 RB-20654
 808-256-0370
 vkop@cbi-hawaii.com

NAI CBI Hawaii
 1712 S. King Street Suite 201
 Honolulu, HI 96826
 808.942.7100 | www.cbi-hawaii.com





Vanessa Kop (B)
RB-20654
808-256-0370
vkop@cbi-hawaii.com

NAI CBI Hawaii
1712 S. King Street Suite 201
Honolulu, HI 96826
808.942.7100 | www.cbi-hawaii.com

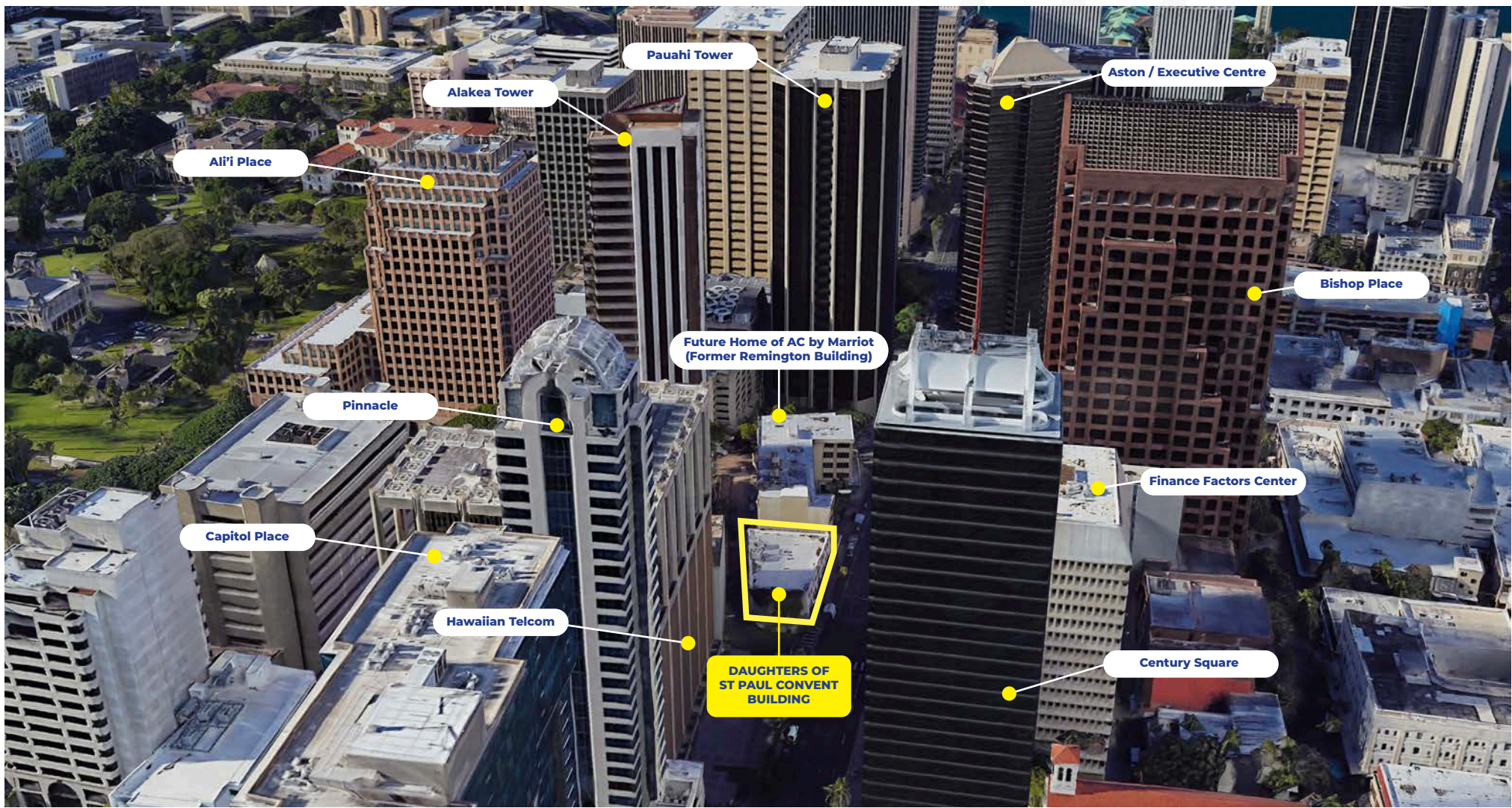




Vanessa Kop (B)
RB-20654
808-256-0370
vkop@cbi-hawaii.com

NAI CBI Hawaii
1712 S. King Street Suite 201
Honolulu, HI 96826
808.942.7100 | www.cbi-hawaii.com





NEIGHBORS

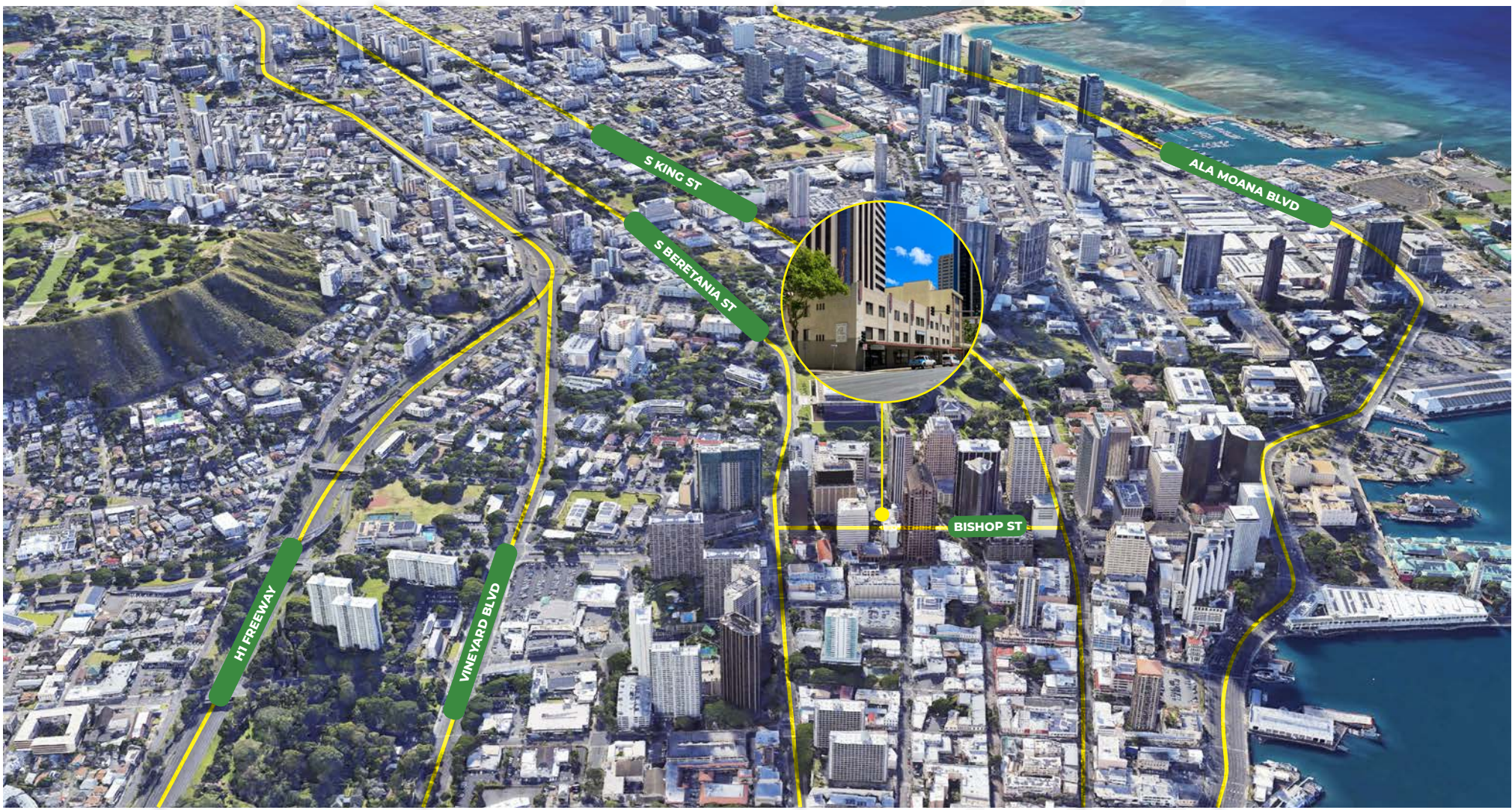
1143 Bishop is located in the heart of Downtown Honolulu and is surrounded by a diverse range of neighboring buildings. Sitting alongside the Remington building, set to become the future home of AC by Marriott and neighbored by Aston at Executive Centre, The Residence at Bishop Place, Finance Factors Center and Hawaiian Telcom Building. A mix of residential, commercial and hospitality options are offered, making 1143 Bishop a highly sought-after location in the heart of the city.



Vanessa Kop (B)
 RB-20654
 808-256-0370
 vkop@cbi-hawaii.com

NAI CBI Hawaii
 1712 S. King Street Suite 201
 Honolulu, HI 96826
 808.942.7100 | www.cbi-hawaii.com



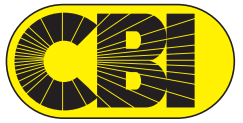


LOCATION	POPULATION	1 MILE	2 MILES	3MILES	HH & INCOME	1 MILE	2 MILES	3MILES
1143 Bishop Street is a mixed use building in Honolulu's Central Business District. The property is located in the heart of Honolulu and offers easy access to major thoroughfares to and from Downtown Honolulu. It is walking distance from restaurants, retail, and more. The property has high visibility from Bishop Street and Union Mall.	Total Population	36,720	110,068	188,924	Total Households	16,450	46,026	75,755
	Average Age	43.3	43.4	41.5	# of Persons per HH	2.2	2.4	2.5
	Average Age (M)	40.4	40.7	39.3	Avg HH Income	\$58,661	\$62,545	\$65,513
	Average Age (F)	46.6	46.4	43.8	Avg House Value	\$452,683	\$474,503	\$514,223

* Demographic data derived from 2010 US Census

NAI
CBI Hawaii
Vanessa Kop (B)
RB-20654
808-256-0370
vkop@cbi-hawaii.com

NAI CBI Hawaii
1712 S. King Street Suite 201
Honolulu, HI 96826
808.942.7100 | www.cbi-hawaii.com





For Sale | \$3,800,000 Fee Simple

1143 BISHOP STREET HONOLULU, HI 96813

DAUGHTERS OF ST. PAUL CONVENT BUILDING

INVESTMENT SUMMARY

TMK:	1-2-1-10-9
Zoning:	BMX-4
Area:	Central Business District Downtown, Honolulu
Building Size:	± 19,737 SF
Lot Size:	± 5,278 SF
Year Built:	1929
Stories:	Three with Basement
Other:	Freestanding Building Owner User Opportunity Elevator On Site

SPACES

1st Floor:	± 5,252 SF Retail
2nd Floor:	± 3,981 SF Office Conference Room Kitchen
3rd Floor:	± 5,252 SF Residential Group Living 11 Rooms 6 Bathrooms Kitchen
Basement:	± 5,252 SF Storage with capabilities for divided spaces
Total:	± 19,737 SF

PROPERTY DESCRIPTION

NAI CBI Hawaii proudly presents 1143 Bishop Street. Formerly known as the Daughters of Saint Paul Convent Building and Bookstore. Located in the Central Business District in Downtown Honolulu, considered the center of commerce in the State of Hawaii occupied by the vast majority of the State's financial, professional, and service organizations. This iconic three-story building has been a part of Honolulu's metropolis since 1929 with renovations, alterations, and repairs made throughout the years.

This mixed-use building serves a variety of operations; the ground floor presents retail space, the second floor serves as office space, the third floor has the possibilities for a residential group-living facility, and the basement offers storage space.



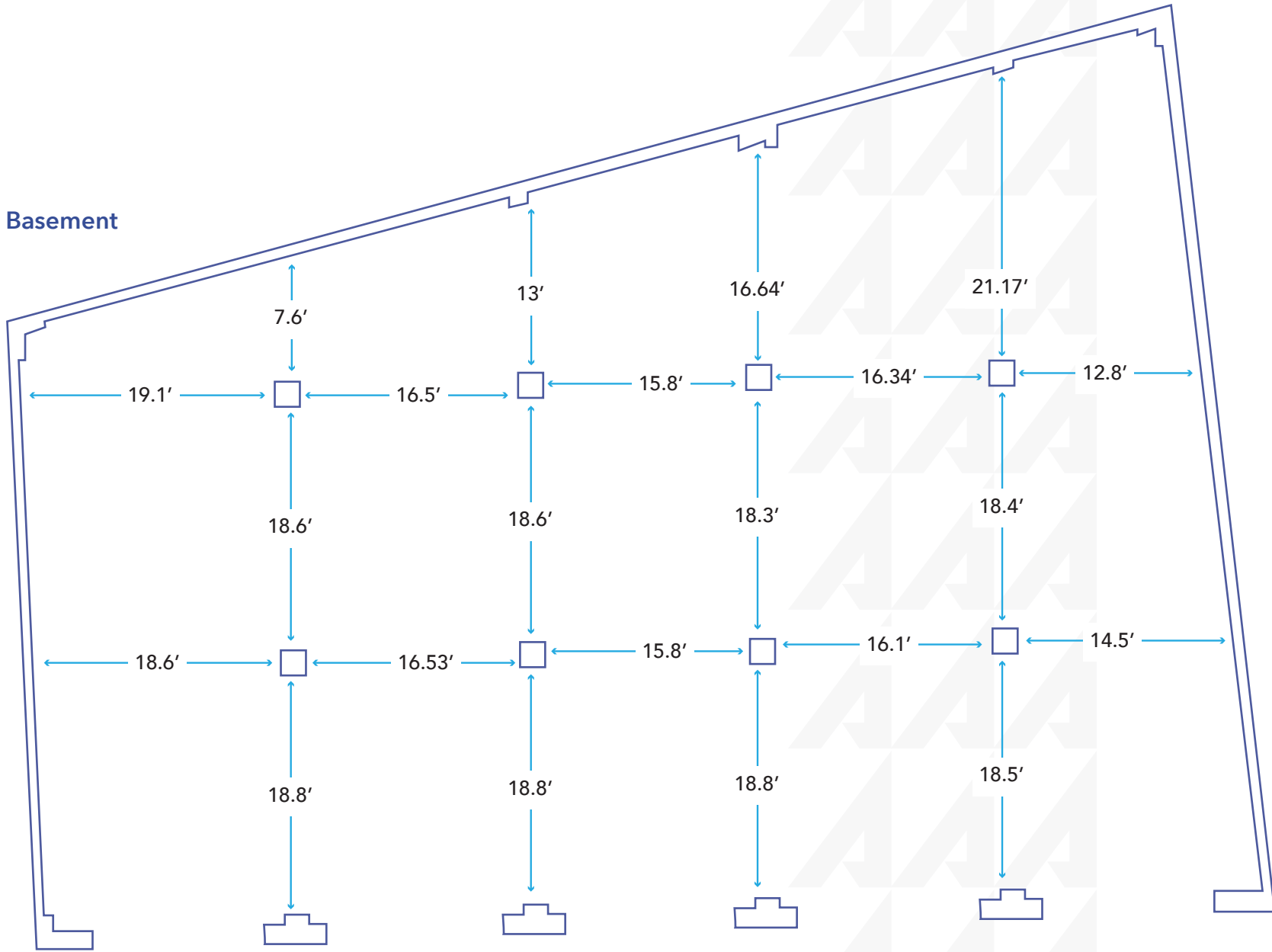
Vanessa Kop (B)
RB-20654
808-256-0370
vkop@cbi-hawaii.com



NAI CBI Hawaii
1712 S. King Street Suite 201
Honolulu, HI 96826
808.942.7100 | www.cbi-hawaii.com



Basement



Vanessa Kop (B)
RB-20654
808-256-0370
vkop@cbi-hawaii.com

NAI CBI Hawaii
1712 S. King Street Suite 201
Honolulu, HI 96826
808.942.7100 | www.cbi-hawaii.com

