

13107 Eastpoint Park Blvd

Louisville, KY 40223

\$875,000 | OFFICE CONDO FOR SALE

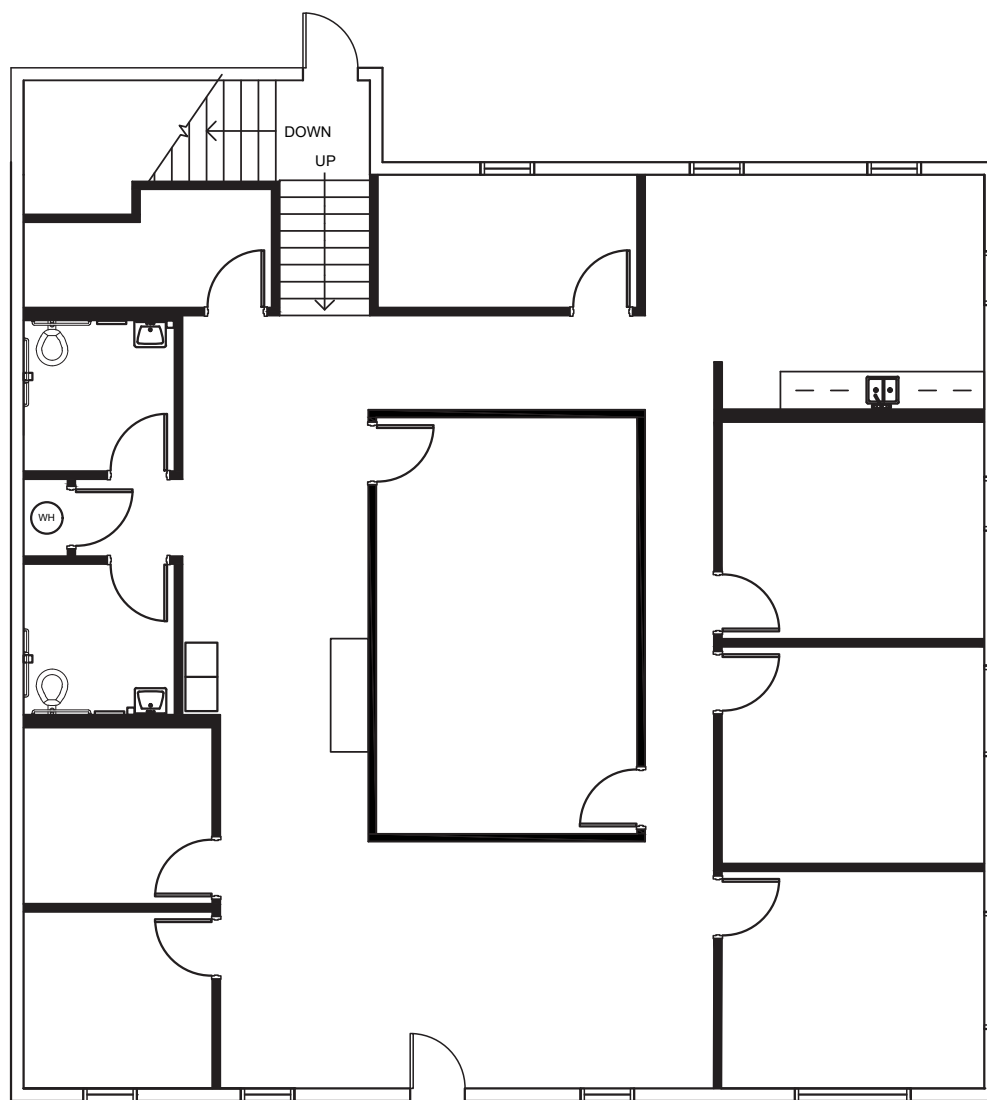


Property Features

- + Two story office condo : 5,070+/- SF
 - + 1st Floor: 3,135 SF
 - + Ground Floor: 1,935 SF
- + Built in 2017 with interior construction done in 2020
- + Convenient Eastpoint Business Park location with easy access to I-265
- + Existing furniture can be made available
- + Ample parking

13107 Eastpoint Park Blvd
Louisville, KY

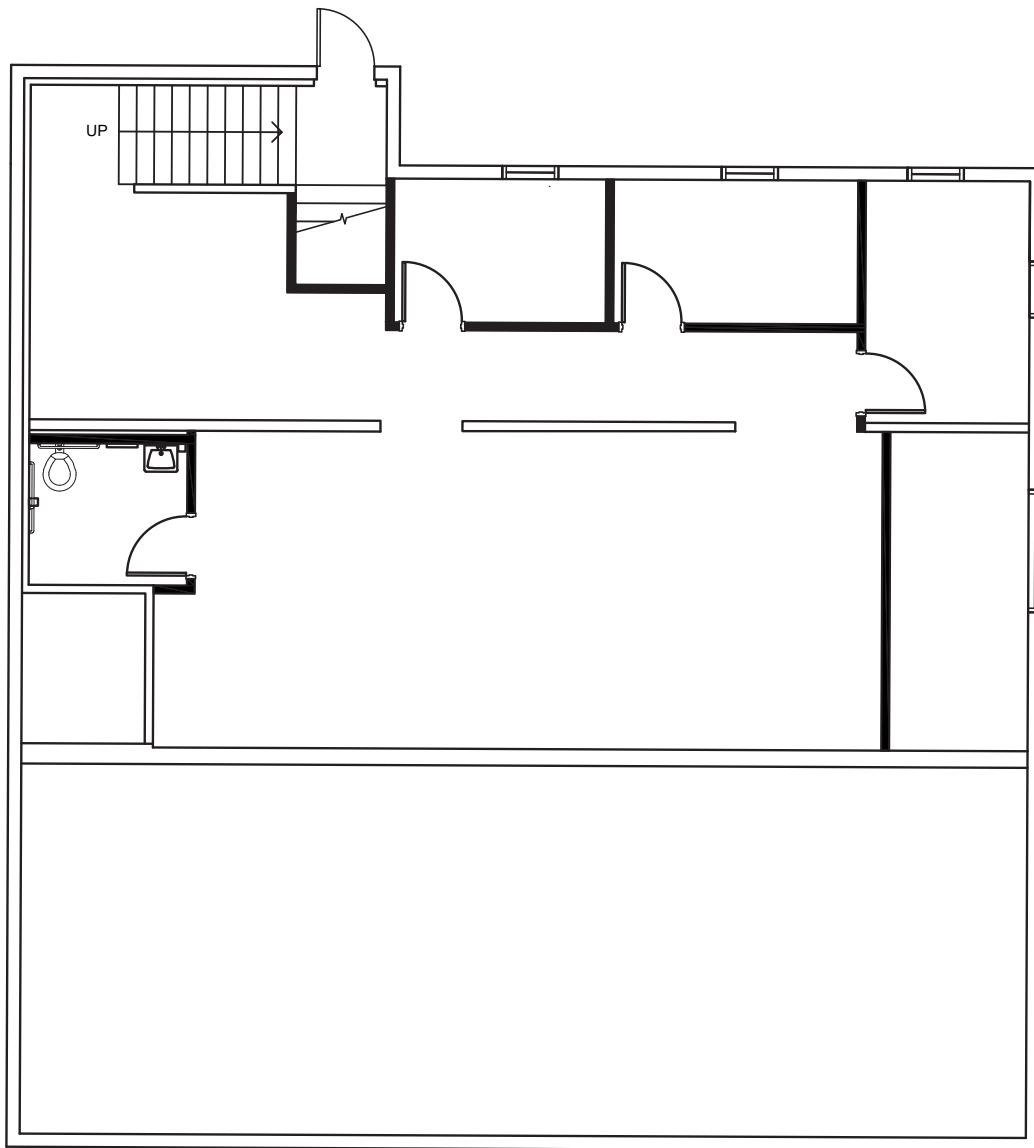
First Floor Plan - 3,135 SF



13107 Eastpoint Park Blvd

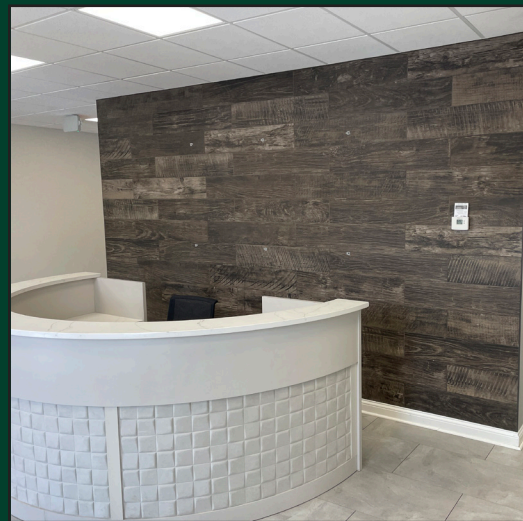
Louisville, KY

Ground Floor Plan - 1,935 SF



For Lease

13107 Eastpoint Park Blvd
Louisville, KY



Contact Us

Michael Somervell, CCIM
First Vice President
+1 502 412 7659
michael.somervell@cbre.com

Jeff Dreher, SIOR
Senior Vice President
+1 502 412 7600
jeff.dreher@cbre.com

© 2025 CBRE, Inc. All rights reserved. This information has been obtained from sources believed reliable, but has not been verified for accuracy or completeness. You should conduct a careful, independent investigation of the property and verify all information. Any reliance on this information is solely at your own risk. CBRE and the CBRE logo are service marks of CBRE, Inc. All other marks displayed on this document are the property of their respective owners, and the use of such logos does not imply any affiliation with or endorsement of CBRE. Photos herein are the property of their respective owners. Use of these images without the express written consent of the owner is prohibited.

www.cbre.com/louisville

CBRE