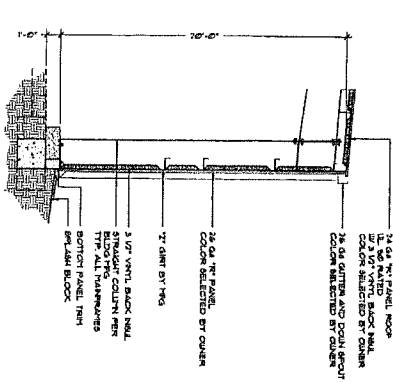
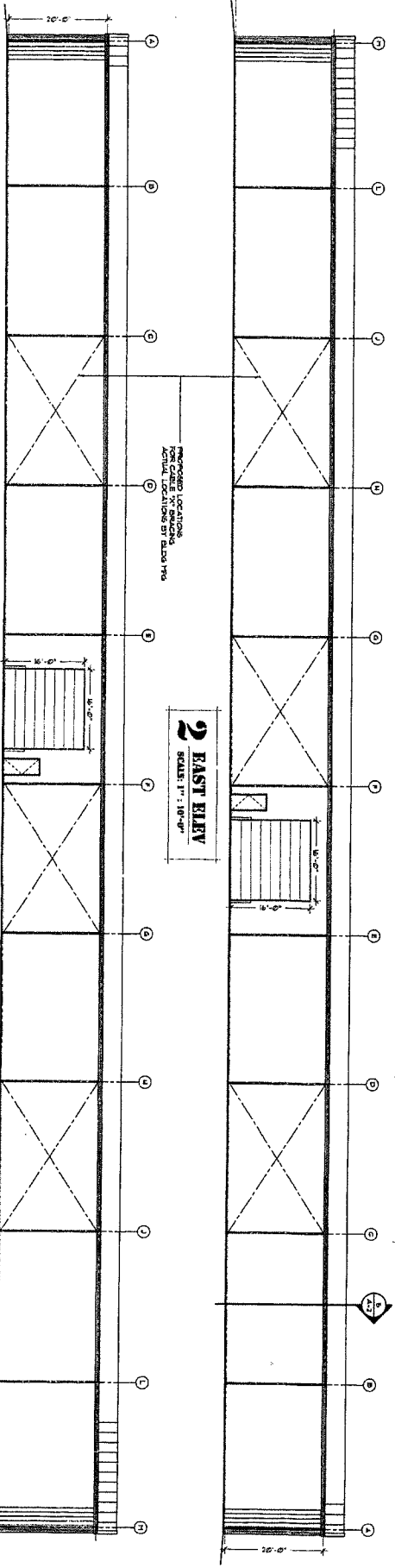


3 NORTH ELEV
SCALE: 1" = 10'-0"

4 SOUTH ELEV
SCALE: 1" = 10'-0"



5 EXTERIOR WALL SECTION
SCALE: 1/4" = 1'-0"



2 EAST ELEV
SCALE: 1" = 10'-0"

1 WEST ELEV
SCALE: 1" = 10'-0"

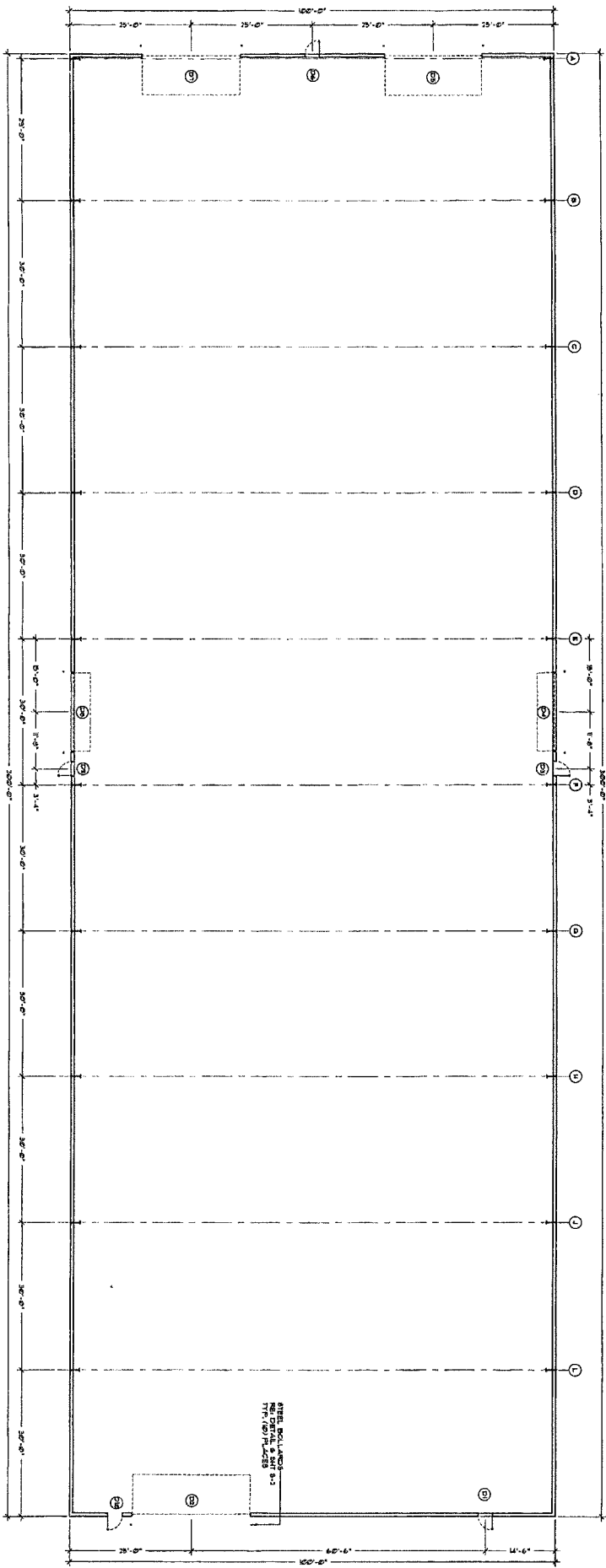
JOB : 0715
 DATE: 11.16.07
 SHEET NUMBER: A-2
 5 OF 5


property arts inc.
 ARCHITECTS
 202 N. Main St. - Wagoner Oklahoma - 74467
 918-455-4377

WAGONER INDUSTRIAL DEVELOPMENT AUTHORITY
 305 S.E. 11TH, WAGONER, OKLAHOMA

REVISIONS:





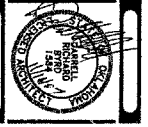
1 FLOOR PLAN
 SCALE: 1" = 10'-0"
 BUILDING AREA
 30,000 SQ. FT.

FINISH KEY

1	WOOD
2	PAINT
3	CONCRETE
4	GLASS
5	CEILING
6	FLOOR
7	WALL
8	DOOR
9	WINDOW

DOOR SCHEDULE

NO.	SYMBOL	TYPE	FINISH	FRAME	GLASS
D1	3'-0" x 7'-0"	A	1	A	1/2" GLASS
D2	2'-0" x 7'-0"	B	1	A	1/2" GLASS
D3	3'-0" x 7'-0"	A	1	A	1/2" GLASS
D4	3'-0" x 7'-0"	B	1	A	1/2" GLASS
D5	3'-0" x 7'-0"	A	1	A	1/2" GLASS
D6	3'-0" x 7'-0"	B	1	A	1/2" GLASS
D7	3'-0" x 7'-0"	A	1	A	1/2" GLASS
D8	3'-0" x 7'-0"	B	1	A	1/2" GLASS
D9	3'-0" x 7'-0"	A	1	A	1/2" GLASS
D10	3'-0" x 7'-0"	B	1	A	1/2" GLASS
D11	3'-0" x 7'-0"	A	1	A	1/2" GLASS
D12	3'-0" x 7'-0"	B	1	A	1/2" GLASS
D13	3'-0" x 7'-0"	A	1	A	1/2" GLASS
D14	3'-0" x 7'-0"	B	1	A	1/2" GLASS
D15	3'-0" x 7'-0"	A	1	A	1/2" GLASS
D16	3'-0" x 7'-0"	B	1	A	1/2" GLASS
D17	3'-0" x 7'-0"	A	1	A	1/2" GLASS
D18	3'-0" x 7'-0"	B	1	A	1/2" GLASS
D19	3'-0" x 7'-0"	A	1	A	1/2" GLASS
D20	3'-0" x 7'-0"	B	1	A	1/2" GLASS
D21	3'-0" x 7'-0"	A	1	A	1/2" GLASS
D22	3'-0" x 7'-0"	B	1	A	1/2" GLASS
D23	3'-0" x 7'-0"	A	1	A	1/2" GLASS
D24	3'-0" x 7'-0"	B	1	A	1/2" GLASS
D25	3'-0" x 7'-0"	A	1	A	1/2" GLASS
D26	3'-0" x 7'-0"	B	1	A	1/2" GLASS
D27	3'-0" x 7'-0"	A	1	A	1/2" GLASS
D28	3'-0" x 7'-0"	B	1	A	1/2" GLASS
D29	3'-0" x 7'-0"	A	1	A	1/2" GLASS
D30	3'-0" x 7'-0"	B	1	A	1/2" GLASS
D31	3'-0" x 7'-0"	A	1	A	1/2" GLASS
D32	3'-0" x 7'-0"	B	1	A	1/2" GLASS
D33	3'-0" x 7'-0"	A	1	A	1/2" GLASS
D34	3'-0" x 7'-0"	B	1	A	1/2" GLASS
D35	3'-0" x 7'-0"	A	1	A	1/2" GLASS
D36	3'-0" x 7'-0"	B	1	A	1/2" GLASS
D37	3'-0" x 7'-0"	A	1	A	1/2" GLASS
D38	3'-0" x 7'-0"	B	1	A	1/2" GLASS
D39	3'-0" x 7'-0"	A	1	A	1/2" GLASS
D40	3'-0" x 7'-0"	B	1	A	1/2" GLASS
D41	3'-0" x 7'-0"	A	1	A	1/2" GLASS
D42	3'-0" x 7'-0"	B	1	A	1/2" GLASS
D43	3'-0" x 7'-0"	A	1	A	1/2" GLASS
D44	3'-0" x 7'-0"	B	1	A	1/2" GLASS
D45	3'-0" x 7'-0"	A	1	A	1/2" GLASS
D46	3'-0" x 7'-0"	B	1	A	1/2" GLASS
D47	3'-0" x 7'-0"	A	1	A	1/2" GLASS
D48	3'-0" x 7'-0"	B	1	A	1/2" GLASS
D49	3'-0" x 7'-0"	A	1	A	1/2" GLASS
D50	3'-0" x 7'-0"	B	1	A	1/2" GLASS
D51	3'-0" x 7'-0"	A	1	A	1/2" GLASS
D52	3'-0" x 7'-0"	B	1	A	1/2" GLASS
D53	3'-0" x 7'-0"	A	1	A	1/2" GLASS
D54	3'-0" x 7'-0"	B	1	A	1/2" GLASS
D55	3'-0" x 7'-0"	A	1	A	1/2" GLASS
D56	3'-0" x 7'-0"	B	1	A	1/2" GLASS
D57	3'-0" x 7'-0"	A	1	A	1/2" GLASS
D58	3'-0" x 7'-0"	B	1	A	1/2" GLASS
D59	3'-0" x 7'-0"	A	1	A	1/2" GLASS
D60	3'-0" x 7'-0"	B	1	A	1/2" GLASS
D61	3'-0" x 7'-0"	A	1	A	1/2" GLASS
D62	3'-0" x 7'-0"	B	1	A	1/2" GLASS
D63	3'-0" x 7'-0"	A	1	A	1/2" GLASS
D64	3'-0" x 7'-0"	B	1	A	1/2" GLASS
D65	3'-0" x 7'-0"	A	1	A	1/2" GLASS
D66	3'-0" x 7'-0"	B	1	A	1/2" GLASS
D67	3'-0" x 7'-0"	A	1	A	1/2" GLASS
D68	3'-0" x 7'-0"	B	1	A	1/2" GLASS
D69	3'-0" x 7'-0"	A	1	A	1/2" GLASS
D70	3'-0" x 7'-0"	B	1	A	1/2" GLASS
D71	3'-0" x 7'-0"	A	1	A	1/2" GLASS
D72	3'-0" x 7'-0"	B	1	A	1/2" GLASS
D73	3'-0" x 7'-0"	A	1	A	1/2" GLASS
D74	3'-0" x 7'-0"	B	1	A	1/2" GLASS
D75	3'-0" x 7'-0"	A	1	A	1/2" GLASS
D76	3'-0" x 7'-0"	B	1	A	1/2" GLASS
D77	3'-0" x 7'-0"	A	1	A	1/2" GLASS
D78	3'-0" x 7'-0"	B	1	A	1/2" GLASS
D79	3'-0" x 7'-0"	A	1	A	1/2" GLASS
D80	3'-0" x 7'-0"	B	1	A	1/2" GLASS
D81	3'-0" x 7'-0"	A	1	A	1/2" GLASS
D82	3'-0" x 7'-0"	B	1	A	1/2" GLASS
D83	3'-0" x 7'-0"	A	1	A	1/2" GLASS
D84	3'-0" x 7'-0"	B	1	A	1/2" GLASS
D85	3'-0" x 7'-0"	A	1	A	1/2" GLASS
D86	3'-0" x 7'-0"	B	1	A	1/2" GLASS
D87	3'-0" x 7'-0"	A	1	A	1/2" GLASS
D88	3'-0" x 7'-0"	B	1	A	1/2" GLASS
D89	3'-0" x 7'-0"	A	1	A	1/2" GLASS
D90	3'-0" x 7'-0"	B	1	A	1/2" GLASS
D91	3'-0" x 7'-0"	A	1	A	1/2" GLASS
D92	3'-0" x 7'-0"	B	1	A	1/2" GLASS
D93	3'-0" x 7'-0"	A	1	A	1/2" GLASS
D94	3'-0" x 7'-0"	B	1	A	1/2" GLASS
D95	3'-0" x 7'-0"	A	1	A	1/2" GLASS
D96	3'-0" x 7'-0"	B	1	A	1/2" GLASS
D97	3'-0" x 7'-0"	A	1	A	1/2" GLASS
D98	3'-0" x 7'-0"	B	1	A	1/2" GLASS
D99	3'-0" x 7'-0"	A	1	A	1/2" GLASS
D100	3'-0" x 7'-0"	B	1	A	1/2" GLASS



REVISIONS:

1				
2				
3				
4				
5				
6				
7				
8				
9				
10				

WAGONER INDUSTRIAL DEVELOPMENT AUTHORITY
 305 S.E. 11TH, WAGONER, OKLAHOMA

property art, inc.
 ARCHITECTS
 202 S. Main St. Wagoner Oklahoma - 74467
 918-485-4577

JOB : 0718
 DATE : 11.14.09
 SHEET NUMBER : **A-1**
 4 OF 5

Property:

305, 311 & 313 SE 11th St.
Wagoner, OK 74467
Wagoner County
Part of Lots 3-9, Block 2, WAGONER INDUSTRIAL PARK, Wagoner County,
Oklahoma

EXHIBIT A

Lot Three (3) and Five (5), LESS the West 195 feet of said Lot Five (5), all in Block Two (2), WAGONER INDUSTRIAL PARK, in the City of Wagoner, Wagoner County, State of Oklahoma, according to the recorded plat thereof.

AND

Lots Seven (7) and Eight (8) and the West 195 feet of Lot Five (5) and the South 250 feet of East 195 feet of Lot Four (4), all in Block Two (2), WAGONER INDUSTRIAL PARK, City of Wagoner, Wagoner County, State of Oklahoma, according to the recorded plat thereof.

AND

The South 250 feet of the West 195 feet of Lot Four (4), Block Two (2), WAGONER INDUSTRIAL PARK, in the City of Wagoner, Wagoner County, State of Oklahoma, according to the recorded plat thereof.

AND

Lot Six (6), Block Two (2), WAGONER INDUSTRIAL PARK, City of Wagoner, Wagoner County, State of Oklahoma, according to the recorded plat thereof.

AND

Lot Nine (9), Block Two (2), WAGONER INDUSTRIAL PARK, City of Wagoner, Wagoner County, State of Oklahoma, according to the recorded plat thereof.