

Prime Neighborhood Shopping Center Space in North Edwards, CA



Lease Rate	\$0.75 SF/MONTH (MG)
------------	-------------------------------------

OFFERING SUMMARY

Building Size:	14,500 SF
Available SF:	391 - 1,200 SF
Lot Size:	3.9 Acres
Year Built:	1959
Zoning:	C2 - General Commercial
Market:	Bakersfield
Submarket:	NE Outlying Kern County
Cross Streets:	Claymine Rd & Lorraine Ave
APN's:	230-190-01, -02, -07, -08, -10, & -11

PROPERTY HIGHLIGHTS

- ±391 - 1,200 SF of Retail Shopping Center Space off CA-58
- Various Sized Retail Configurations w/ New Paint & Flooring
- Well-Known Freestanding Building + Parking & Signage
- Parking On All Sides Of Building on ±3.9 Acres
- Excellent Location, Great Tenant Mix, High Traffic Flows
- Energy Efficient Improvements - Low Cost Bulk Rate Utilities
- Convenient Location w/ Quick Access to Cal City & Mojave
- Prime Corner Identity | Large Pylon Signage | Abundant Parking
- Direct Claymine Rd Visibility | Surrounded w/ Quality Tenants
- Best Pylon Sign On #1 Retail Corridor: Claymine Rd
- Busiest Retail Growth Corridor w/ ±72,630 Cars Per Day
- Close Proximity to Major Traffic Generators & Fwy 58 Ramps
- Great Access & Visibility w/ Unmatched Level of Consumer Traffic
- ±14K SF Recently Renovated Center - Ample Convenient Parking
- Highly Visible Intersection w/ Ample Parking & Easy Access

Jared Ennis

CalDRE #01945284

Executive Vice President

jared@centralcacommercial.com

559.705.1000

Kevin Land

CalDRE #01516541

Executive Managing Director

kevin@centralcacommercial.com

559.705.1000

Central CA Commercial

Investments | Industrial | Office

Multifamily | Retail | Land | Specialty

CentralCaCommercial.com

We obtained the information above from sources we believe to be reliable. However, we have not verified its accuracy and make no guarantee, warranty or representation about it. It is submitted subject to the possibility of errors, omissions, change of price, rental or other conditions, prior sale, lease or financing, or withdrawal without notice. We include projections, opinions, assumptions or estimates for example only, and they may not represent current or future performance of the property. You and your tax and legal advisors should conduct your own investigation of the property and transaction.

Prime Neighborhood Shopping Center Space in North Edwards, CA

PROPERTY DESCRIPTION

Prime Shopping Center Space is well-located directly off CA-58 in North Edwards, CA serving the vast majority of Mojave and California City residents. There are currently (4) availabilities ranging from ±391 - 1,200 SF consisting of open retail & restaurant space. Each space offers a wide open floor plan, hard-surface flooring throughout, bright lighting, updated energy efficient features, private restrooms, outdoor lights during the night hours, lush landscaping, & all units have separate gas & power meters. The center is located approximately 5 miles from Edwards AF Aux North Base which is home to nearly 6,000 on-base residents. Over ±72,630 cars per day when combining both directions of Claymine & Lorraine as well as Highway 58 in both directions.

LOCATION DESCRIPTION

This property is well located off of the northwest corner of Claymine Rd & Lorraine Avenues just north of Freeway 58. The shopping center is surrounded by many national and regional retailers, and boast high traffic counts on Claymine Rd and great population density. North Edwards is a census-designated place (CDP) in Kern County, California. Situated in the Mojave Desert, North Edwards is located about 7.2 miles north-east of Edwards Air Force Base, at an elevation of 2,293 feet. As of the 2010 census it had a population of 1,058.



Jared Ennis

CalDRE #01945284

Executive Vice President

jared@centralcacommercial.com

559.705.1000

Kevin Land

CalDRE #01516541

Executive Managing Director

kevin@centralcacommercial.com

559.705.1000

Central CA Commercial

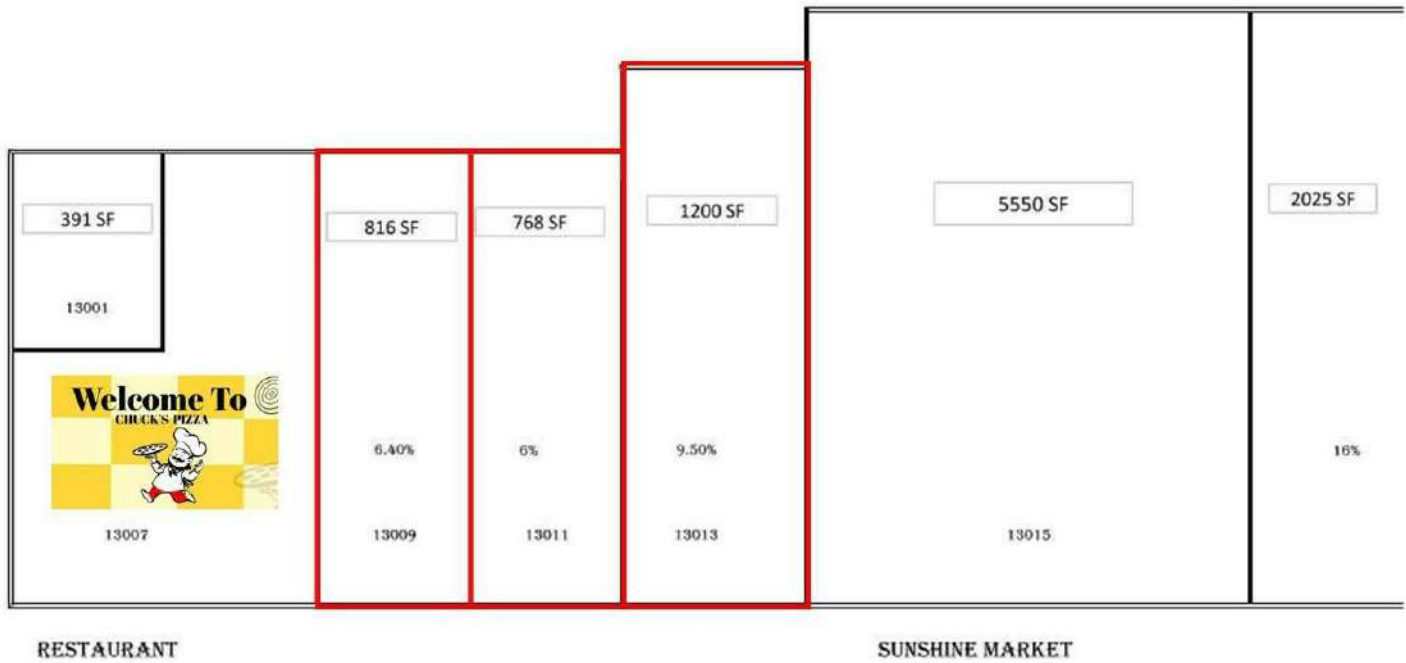
Investments | Industrial | Office

Multifamily | Retail | Land | Specialty

CentralCaCommercial.com

We obtained the information above from sources we believe to be reliable. However, we have not verified its accuracy and make no guarantee, warranty or representation about it. It is submitted subject to the possibility of errors, omissions, change of price, rental or other conditions, prior sale, lease or financing, or withdrawal without notice. We include projections, opinions, assumptions or estimates for example only, and they may not represent current or future performance of the property. You and your tax and legal advisors should conduct your own investigation of the property and transaction.

Prime Neighborhood Shopping Center Space in North Edwards, CA



LEASE INFORMATION

Lease Type:	MG	Lease Term:	Negotiable
Total Space:	391 - 1,200 SF	Lease Rate:	\$0.75 SF/month

AVAILABLE SPACES

SUITE	TENANT	SIZE (SF)	LEASE TYPE	LEASE RATE
13001 Claymine Rd	Available	391 SF	Modified Gross	\$0.75 SF/month
13009 Claymine Rd	Available	816 SF	Modified Gross	\$0.75 SF/month
13011 Claymine Rd	Available	768 SF	Modified Gross	\$0.75 SF/month
13013 Claymine Rd	Available	1,200 SF	Modified Gross	\$0.75 SF/month

Jared Ennis
CalDRE #01945284
Executive Vice President
jared@centralcacommercial.com
559.705.1000

Kevin Land
CalDRE #01516541
Executive Managing Director
kevin@centralcacommercial.com
559.705.1000

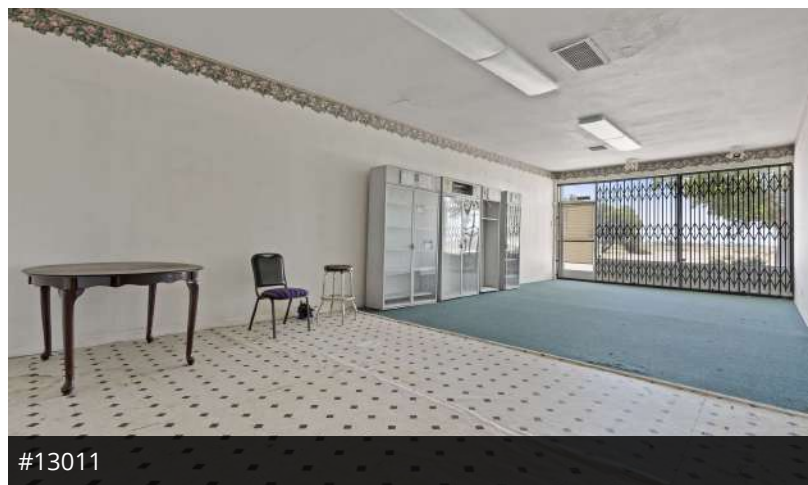
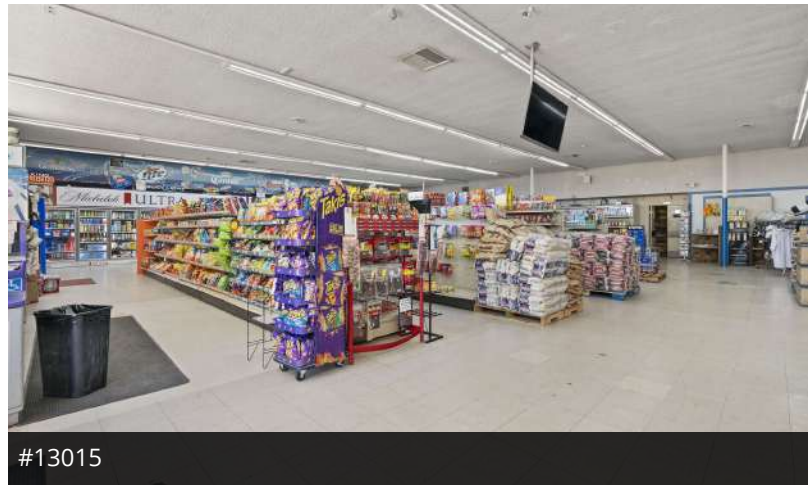
Central CA Commercial
Investments | Industrial | Office
Multifamily | Retail | Land | Specialty
CentralCaCommercial.com

We obtained the information above from sources we believe to be reliable. However, we have not verified its accuracy and make no guarantee, warranty or representation about it. It is submitted subject to the possibility of errors, omissions, change of price, rental or other conditions, prior sale, lease or financing, or withdrawal without notice. We include projections, opinions, assumptions or estimates for example only, and they may not represent current or future performance of the property. You and your tax and legal advisors should conduct your own investigation of the property and transaction.

Retail For Lease | 13015 Claymine Rd North Edwards, CA 93523



Prime Neighborhood Shopping Center Space in North Edwards, CA



Jared Ennis

CalDRE #01945284

Executive Vice President

jared@centralcacommercial.com

559.705.1000

Kevin Land

CalDRE #01516541

Executive Managing Director

kevin@centralcacommercial.com

559.705.1000

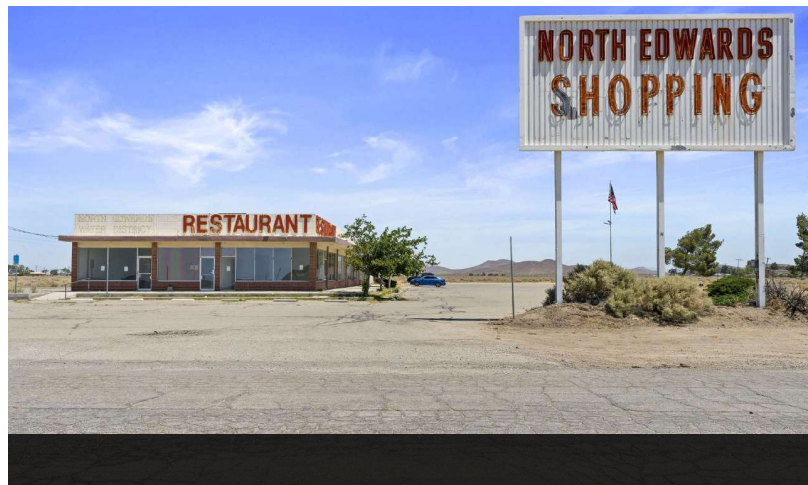
Central CA Commercial
Investments | Industrial | Office
Multifamily | Retail | Land | Specialty
CentralCaCommercial.com

We obtained the information above from sources we believe to be reliable. However, we have not verified its accuracy and make no guarantee, warranty or representation about it. It is submitted subject to the possibility of errors, omissions, change of price, rental or other conditions, prior sale, lease or financing, or withdrawal without notice. We include projections, opinions, assumptions or estimates for example only, and they may not represent current or future performance of the property. You and your tax and legal advisors should conduct your own investigation of the property and transaction.

Retail For Lease | 13015 Claymine Rd North Edwards, CA 93523



Prime Neighborhood Shopping Center Space in North Edwards, CA



Jared Ennis

CalDRE #01945284

Executive Vice President

jared@centralcacommercial.com

559.705.1000

Kevin Land

CalDRE #01516541

Executive Managing Director

kevin@centralcacommercial.com

559.705.1000

Central CA Commercial

Investments | Industrial | Office

Multifamily | Retail | Land | Specialty

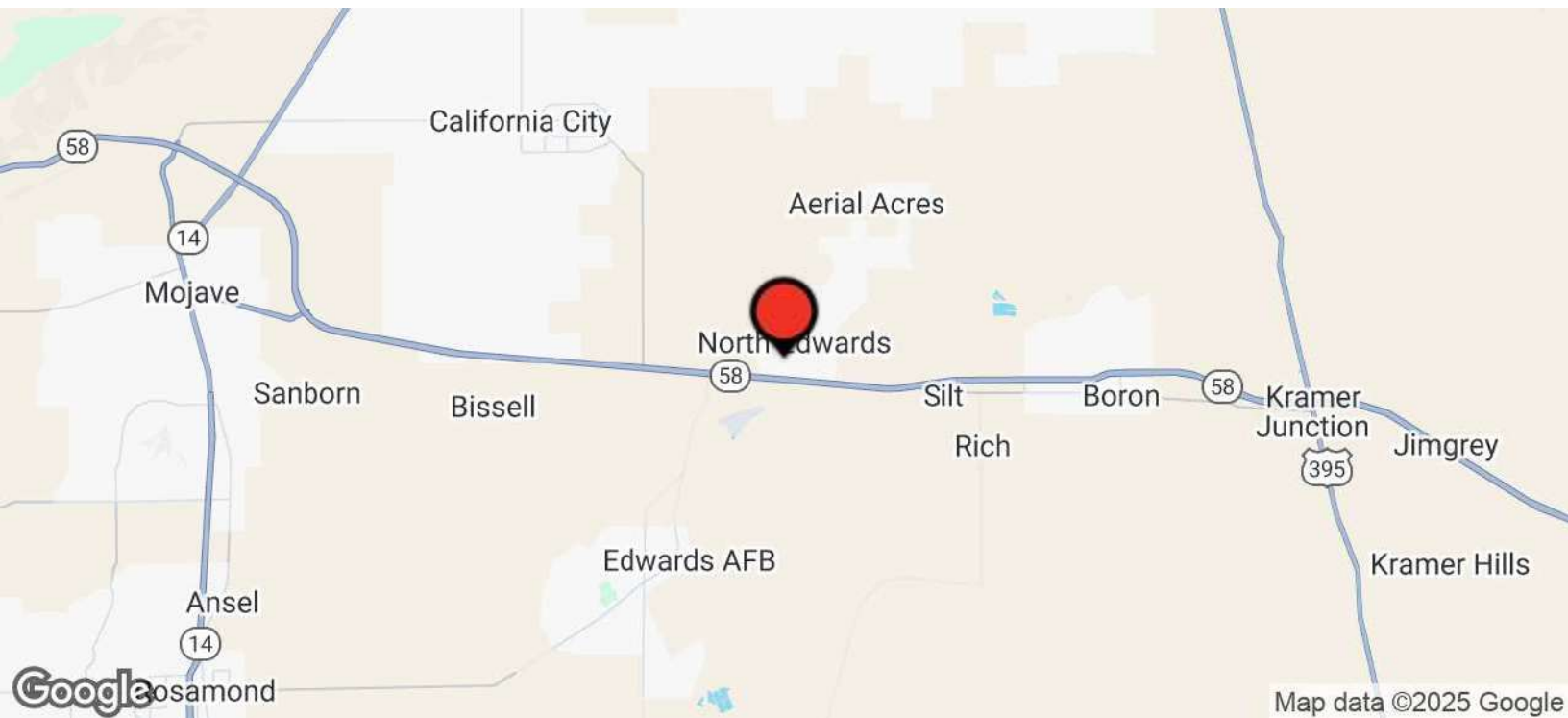
CentralCaCommercial.com

We obtained the information above from sources we believe to be reliable. However, we have not verified its accuracy and make no guarantee, warranty or representation about it. It is submitted subject to the possibility of errors, omissions, change of price, rental or other conditions, prior sale, lease or financing, or withdrawal without notice. We include projections, opinions, assumptions or estimates for example only, and they may not represent current or future performance of the property. You and your tax and legal advisors should conduct your own investigation of the property and transaction.

Retail For Lease | 13015 Claymine Rd North Edwards, CA 93523



Prime Neighborhood Shopping Center Space in North Edwards, CA



Jared Ennis

CalDRE #01945284

Executive Vice President

jared@centralcacommercial.com

559.705.1000

Kevin Land

CalDRE #01516541

Executive Managing Director

kevin@centralcacommercial.com

559.705.1000

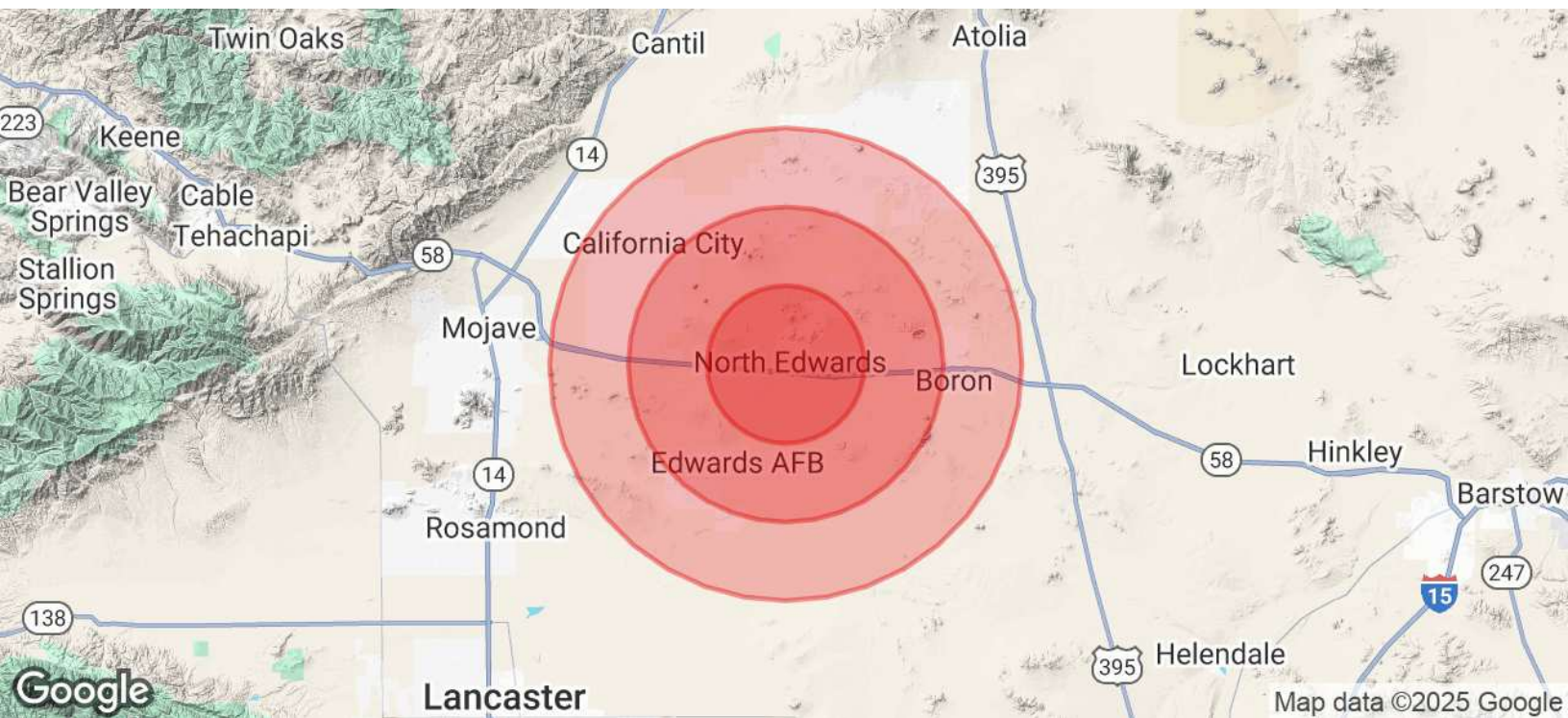
Central CA Commercial

Investments | Industrial | Office

Multifamily | Retail | Land | Specialty

CentralCaCommercial.com

We obtained the information above from sources we believe to be reliable. However, we have not verified its accuracy and make no guarantee, warranty or representation about it. It is submitted subject to the possibility of errors, omissions, change of price, rental or other conditions, prior sale, lease or financing, or withdrawal without notice. We include projections, opinions, assumptions or estimates for example only, and they may not represent current or future performance of the property. You and your tax and legal advisors should conduct your own investigation of the property and transaction.

Prime Neighborhood Shopping Center Space in North Edwards, CA

POPULATION	5 MILES	10 MILES	15 MILES
Total Population	1,001	10,507	20,805
Average Age	43	35	36
Average Age (Male)	42	35	36
Average Age (Female)	44	39	38

HOUSEHOLDS & INCOME	5 MILES	10 MILES	15 MILES
Total Households	440	3,161	6,940
# of Persons per HH	2.3	3.3	3
Average HH Income	\$67,033	\$84,702	\$76,000
Average House Value	\$137,245	\$237,221	\$235,606

ETHNICITY (%)	5 MILES	10 MILES	15 MILES
Hispanic	25.5%	34.0%	35.3%

Jared Ennis
 CalDRE #01945284
 Executive Vice President
jared@centralcacommercial.com
 559.705.1000

Kevin Land
 CalDRE #01516541
 Executive Managing Director
kevin@centralcacommercial.com
 559.705.1000

Central CA Commercial
Investments | Industrial | Office
Multifamily | Retail | Land | Specialty
CentralCaCommercial.com

We obtained the information above from sources we believe to be reliable. However, we have not verified its accuracy and make no guarantee, warranty or representation about it. It is submitted subject to the possibility of errors, omissions, change of price, rental or other conditions, prior sale, lease or financing, or withdrawal without notice. We include projections, opinions, assumptions or estimates for example only, and they may not represent current or future performance of the property. You and your tax and legal advisors should conduct your own investigation of the property and transaction.