

FOR SUBLEASE PRICE CHOPPER

50 Cambridge Street, Worcester, MA 01603



MADISON O'BRIEN

508.320.7352

obrien@kelleher-sadowsky.com

JAMES UMPHREY

508.635.6790

umphrey@kelleher-sadowsky.com





PROPERTY DESCRIPTION

Welcome to 50 Cambridge Street, a premier subleasing opportunity in Worcester, MA. This exceptional property offers a spacious free-standing building, ample parking, high visibility, and a modern façade. With a generous floor plan, versatile layout, and potential for customized branding, this property is ready to bring your vision to life. Take advantage of the prime location and make your mark in this bustling commercial district. Elevate your business in Worcester with the distinguished presence of 50 Cambridge Street.

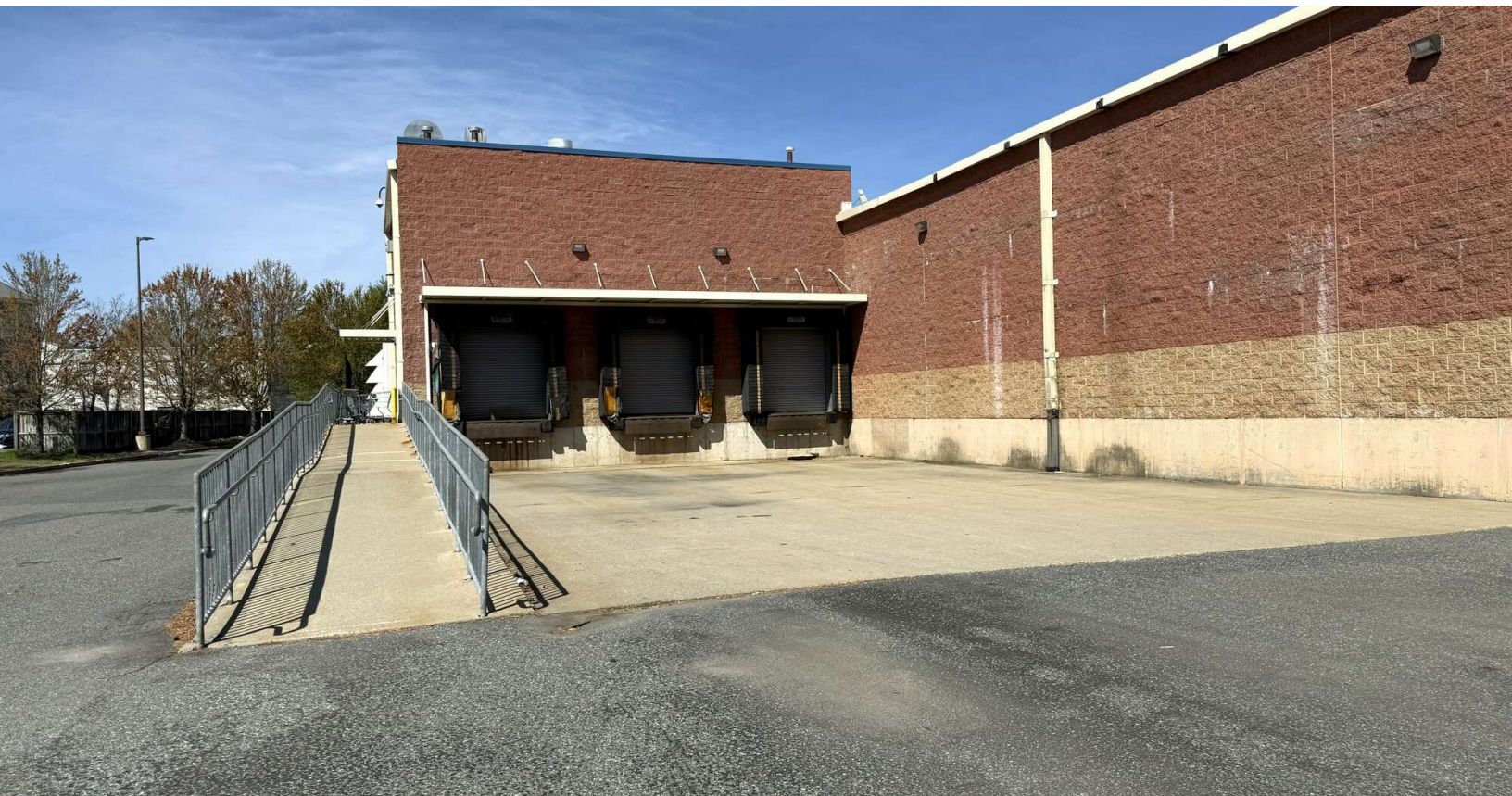
SUBLEASE INFORMATION

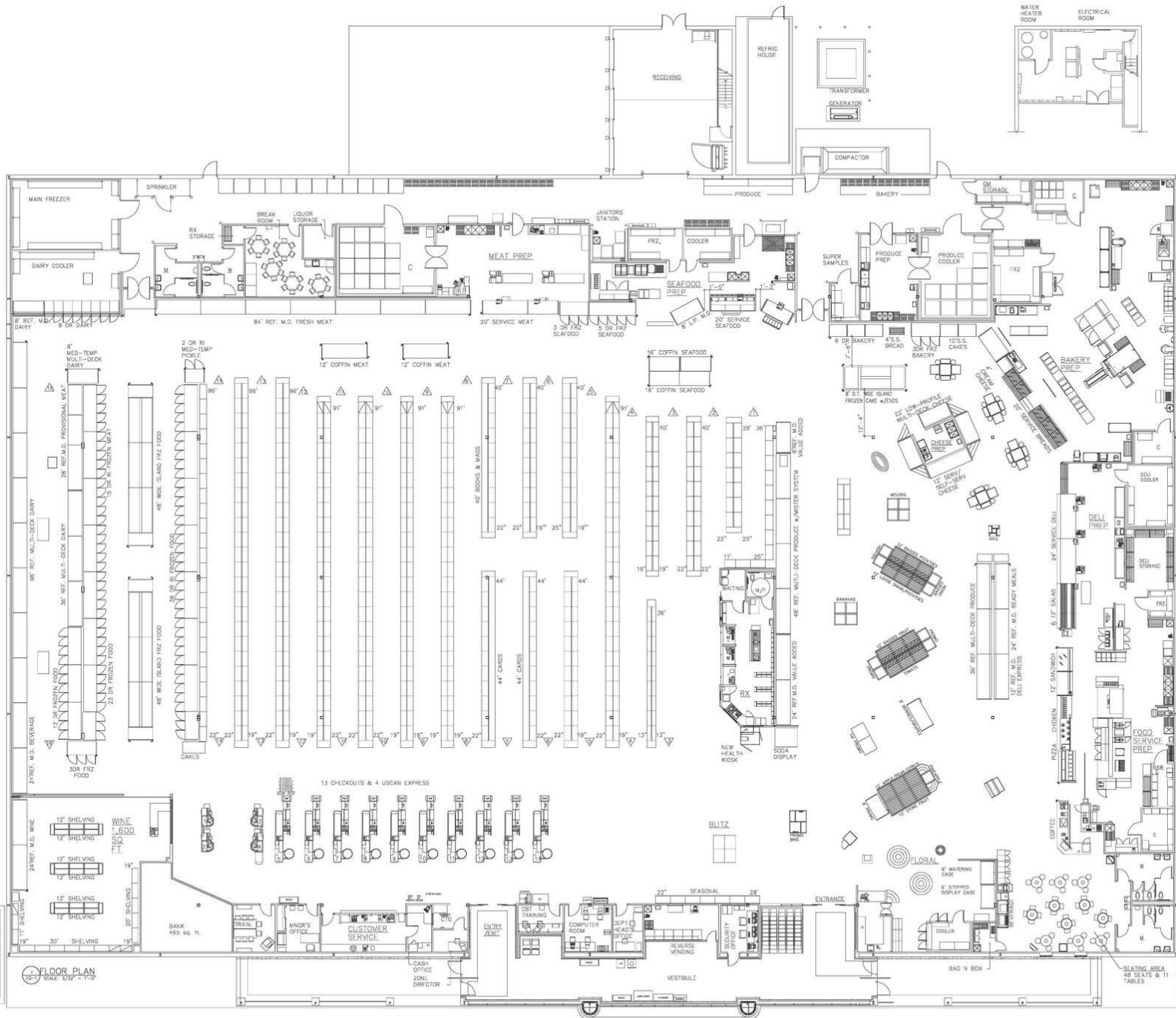
- Lease Commencement: 2002
- Lease End Date: June 2028
- Years Remaining: Three
- Option Periods: Four (4), 5-year options
- Sublandlord: Price Chopper Operating Co. of Massachusetts, Inc.
- Property Owner: Red Apple Group

OFFERING SUMMARY

Lease Rate:	Negotiable
Lease Type:	NNN
Building Size:	±68,966 SF
Lot Size:	±10.52 Acres
Loading Docks:	3 External
Clear Height:	±13' - 22'
Parking:	±400 (6/1,000 SF)
Year Built:	2003
Zoning:	ML-2
Traffic Count:	±14,118 ADT

DEMOGRAPHICS	1 MILE	3 MILES	5 MILES
Total Households	8,815	54,299	87,590
Total Population	24,755	144,538	227,651
Average HH Income	\$72,289	\$84,236	\$95,181







Map data
© 2025
Google