

13,364 SF WITH 3 USABLE ACRES FOR SALE OR LEASE

4101 CAUSEWAY BLVD

TAMPA, FL 33619

DRONE VIDEO
CLICK TO EXPLORE



Causeway Blvd

BRAD HUTTON | Director
813.793.8492 | Brad.Hutton@FranklinSt.com

PATRICK KELLY | Regional Managing Director
813.682.6210 | Pat.Kelly@FranklinSt.com

ANDREW FERNANDEZ | Associate
813.540.4525 | Andrew.Fernandez@FranklinSt.com

PROPERTY SUMMARY

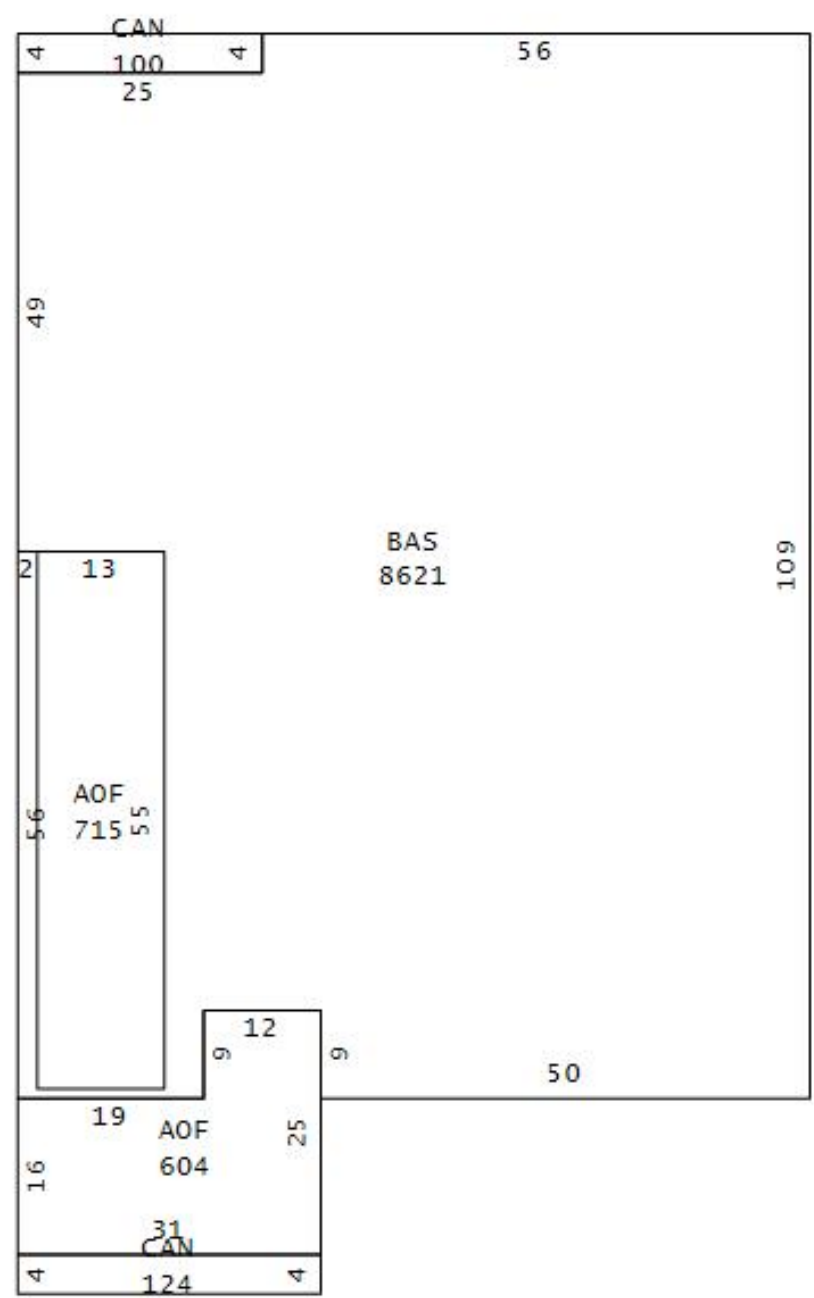


PROPERTY HIGHLIGHTS

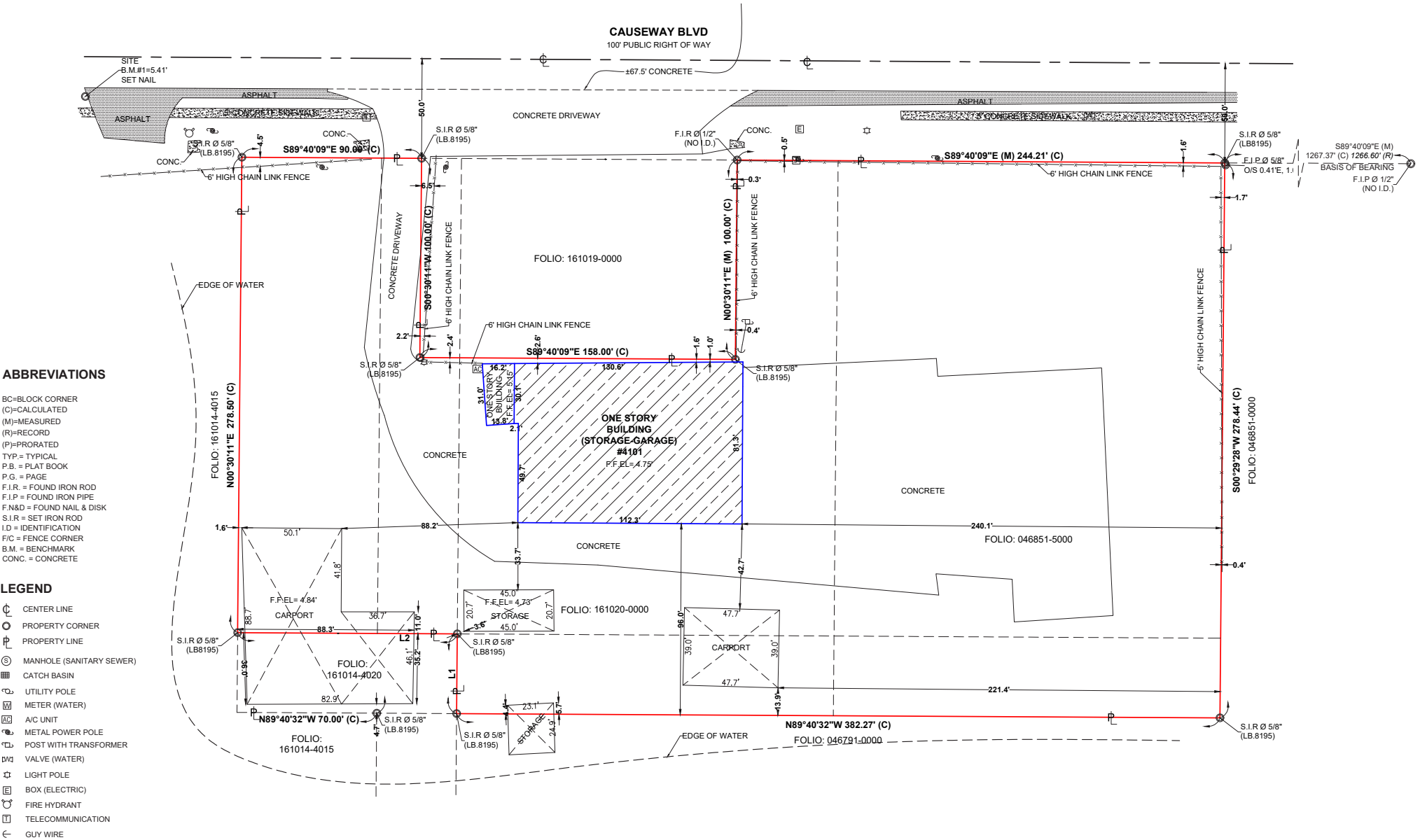
- 13,364 SF with +/-1,300 SF of office space
- 3 usable acres
- Building has one (1) row of columns, separating the office and drive thru truck bays
- Three (3) drive thru truck bays which have a clear span of 48' w x 109' h
- Six (6) 14' w x 15' h overhead doors
- Two (2) restrooms
- Clear height ranges from 20' - 16'
- 3 phase 480/277
- Yard has outdoor lighting and fencing



FLOOR PLAN



SITE SURVEY



LINE DATA		
LINE	CHORD BEARING	CH. DISTANCE
L1	S00°30'11"W (C)	40.00' (C)
L2	N89°40'32"W (C)	40.00' (C)
L3	S00°30'11"W (C)	40.00' (C)

CONTACT

BRAD HUTTON

Director

813.793.8492

Brad.Hutton@FranklinSt.com

PATRICK KELLY

Regional Managing Director

813.682.6210

Pat.Kelly@FranklinSt.com

ANDREW FERNANDEZ

Associate

813.540.4525

Andrew.Fernandez@FranklinSt.com



1311 N Westshore Blvd | Suite 200

Tampa, FL 33607

813.839.7300

[Visit us at FranklinSt.com](http://FranklinSt.com)



No warranty or representation, expressed or implied, is made to the accuracy of information contained herein, and same is submitted subject to errors, change of price, rental or other conditions, withdrawal without notice, and to any special listing conditions imposed by our principals.

4101 CAUSEWAY BLVD | TAMPA, FL