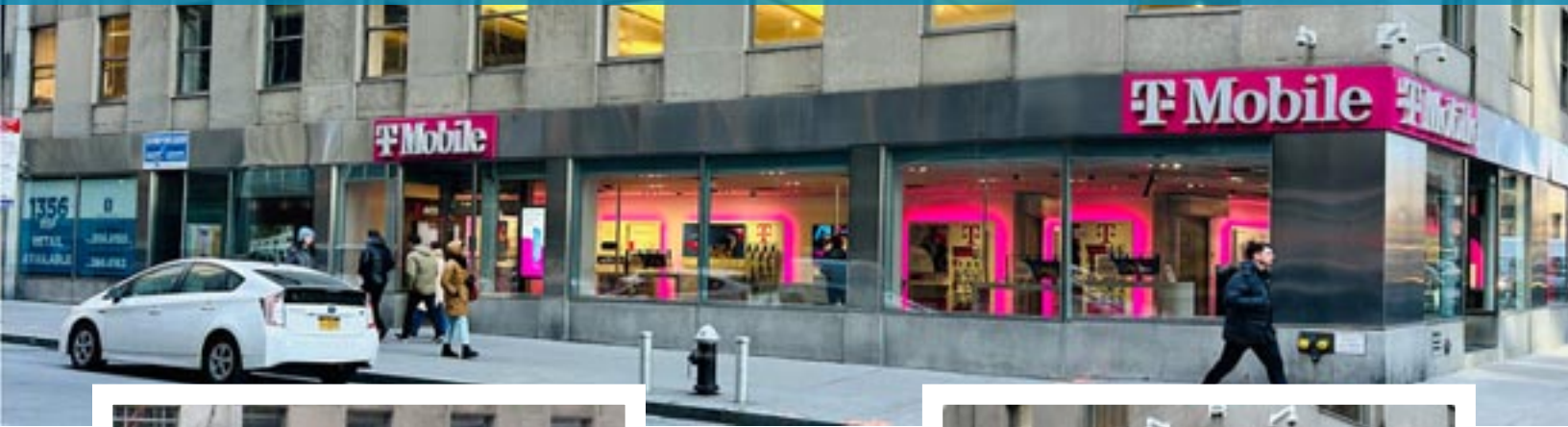


125 Maiden Lane



HIGH EXPOSURE CORNER MAIDEN LANE & WATER ST

RETAIL SPACE FOR LEASE

± 3846 RSF

Ground Floor

NEW YORK, NEW YORK

New to Market

Two High Visibility Spaces
Combine into a
Stunning one of a kind corner

Unit:	Ground Floor
RSF:	3,846 RSF
Avail:	February 2025
Price:	\$150 / RSF
Frontage:	129' Wrapping Corner
Maiden:	90'
Water:	39'

Scott Klatsky
(212)206-6155
sklatsky@timeequities.com



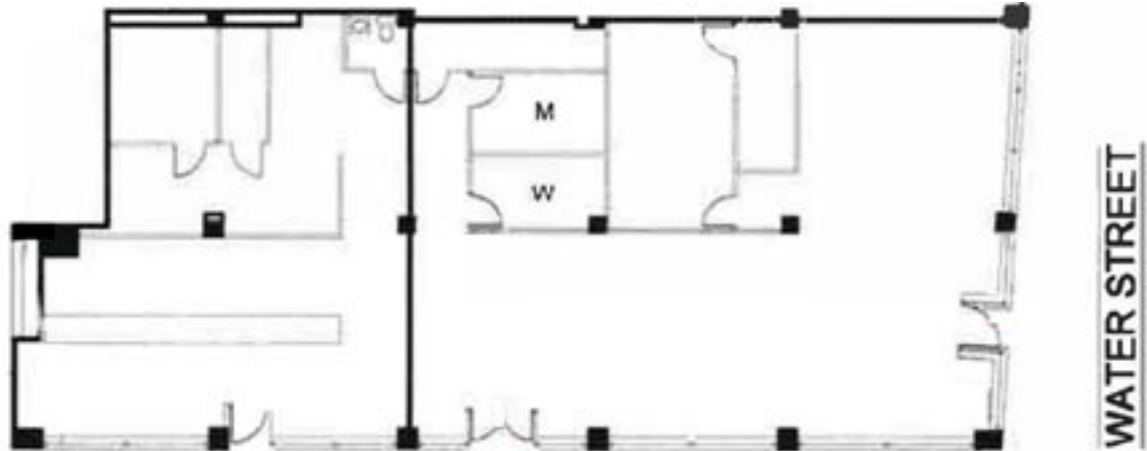
Scott Schneidman
(212)206-6163
sschneidman@timeequities.com

125 Maiden Lane

1356 RSF
Ground
Floor

Combine for a total of **3846 RSF**

2490 RSF
Ground
Floor



MAIDEN LANE

HIGH EXPOSURE CORNER MAIDEN LANE & WATER ST

RETAIL SPACE FOR LEASE

± 3846 RSF

Ground Floor

NEW YORK, NEW YORK



No warranty, or representation is made as to the accuracy of the above information and same is submitted subject to errors, omissions, change of price, rental or other conditions, prior lease or withdrawal without notice, and to any special listing conditions, including the rate and manner of payment of commissions for particular offering, the terms of which are available to duly licensed brokers. This listing is subject to the aforesaid conditions and is not to be deemed an employment nor a binding contract of any kind unless or until our brokerage agreement is fully executed.

Scott Klatsky
(212)206-6155

sklatsky@timeequities.com



Scott Schneidman
(212)206-6163

sschneidman@timeequities.com

55 FIFTH AVE | 15TH FLOOR | NEW YORK, NY | 10003-4398 | 212-206-6000 | TIMEEQUITIES.COM
LICENSED REAL ESTATE BROKER