



309 MAIN STREET MADISON, NEW JERSEY

FOR LEASE 2,000 SF

SHANE WIERKS

swierks@jefferyrealty.com

C: 908.581.7781

O: 908.668.9600



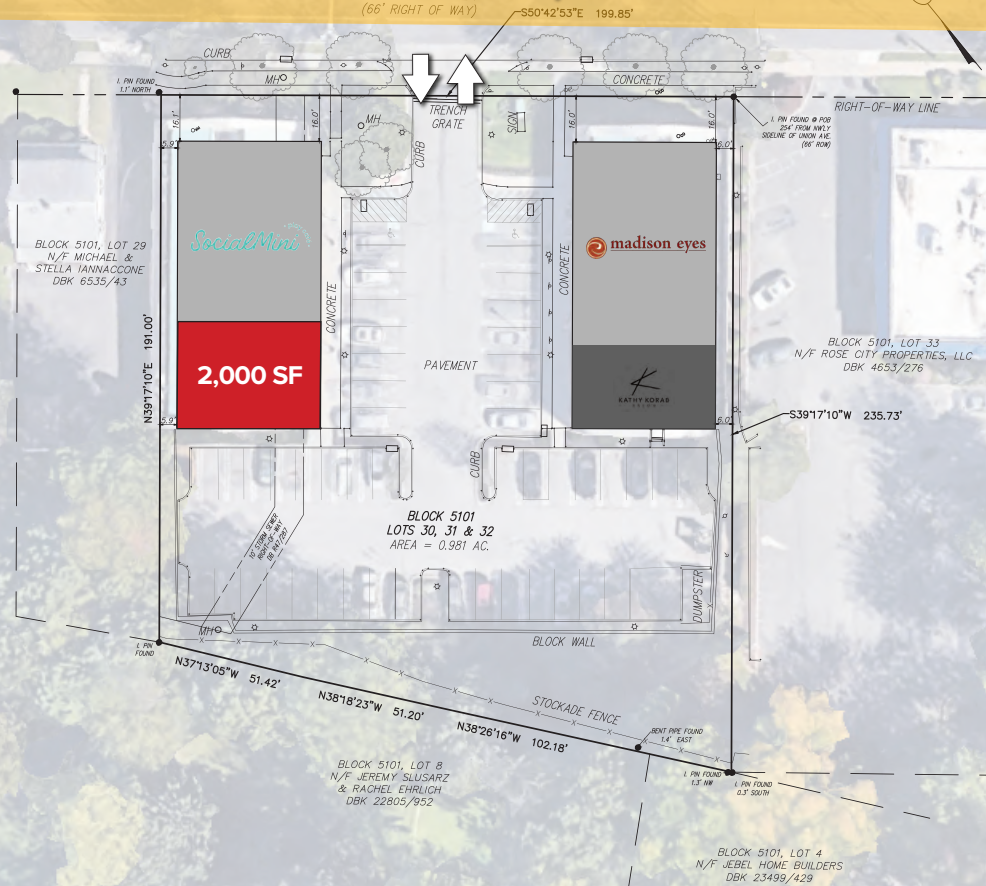
JEFFERY REALTY
Retail Specialist

52 Millburn Ave. • Springfield, NJ 07081 • T: 908.668.9600 • F: 908.668.5225 • www.JefferyRealty.com
All information is from sources deemed reliable and is submitted subject to errors, omissions, change of price, terms, prior sales and withdrawals.



← WEST
EAST →

MAIN STREET 21,544 VPD



TENANT ROSTER	
MADISON EYES	4,000 SF
KATHY KORAB SALON	1,000 SF
SOCIAL MINI PLAY CAFE	3,000 SF
AVAILABLE	2,000 SF

309 MAIN ST. MADISON, NEW JERSEY

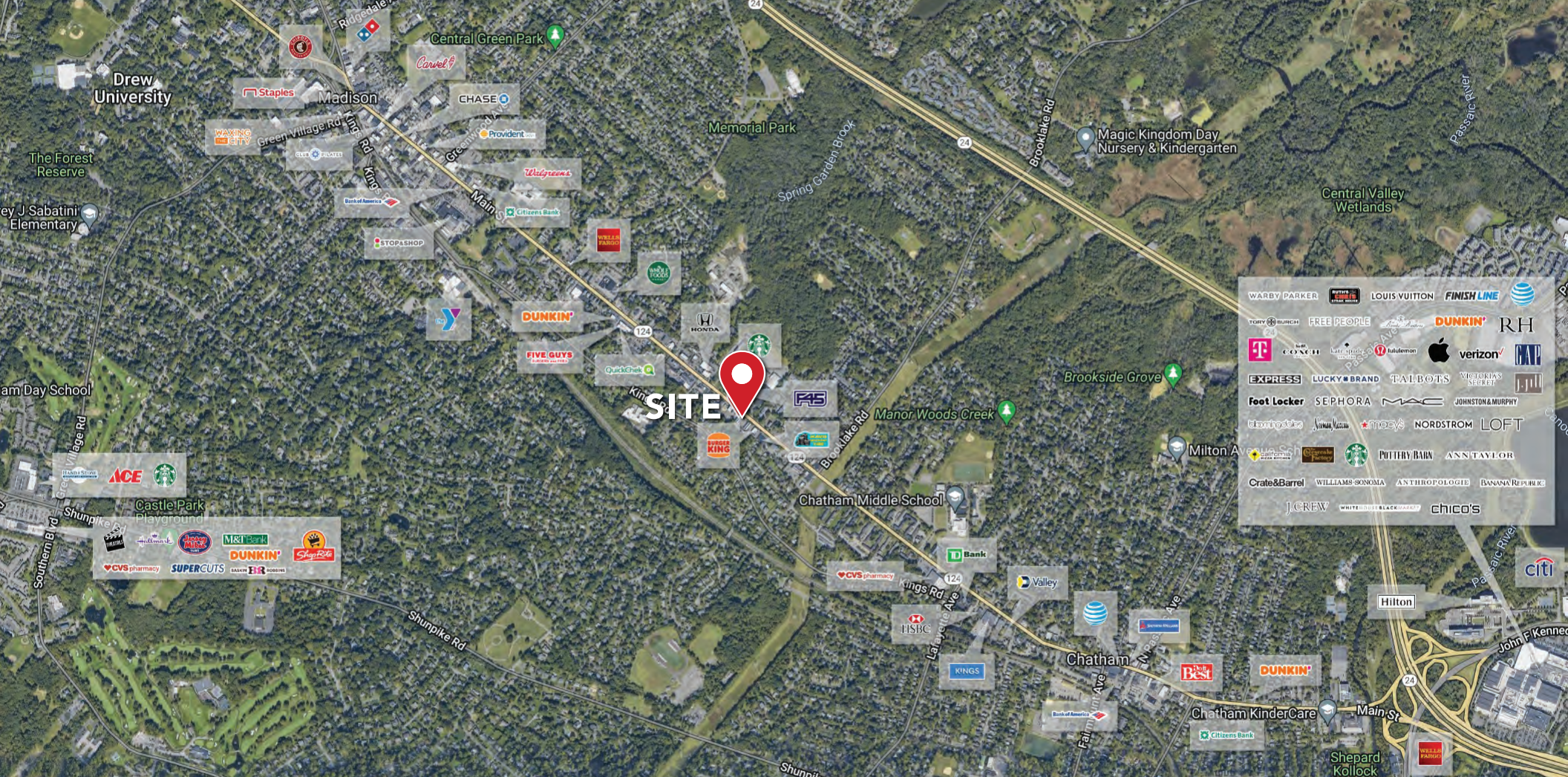
SITE INFORMATION

GLA: 10,000 SF
AVAILABLE: 2,000 SF
RENT: Call For Quote
NNN: \$12.00 PSF

FRONTAGE: 50' On Main St.
PARKING: 47 Spaces
TRAFFIC: 21,544 VPD On Main

NOTES:


- Space Is 80% Built Out As A Brand New Med / Spa (Tenant Never Opened)
- Drew University, Fairleigh Dickinson University & College Of St. Elizabeth Are All Located Within Close Proximity With Over 16,267 Students & Faculty.



309 MAIN ST. MADISON, NEW JERSEY

MARKET AERIAL



 DEMOGRAPHICS	1 MILE	3 MILE	5 MILE
Total Population	12,480	65,090	151,498
Average HHI	\$238,505	\$228,329	\$235,548
Households	4,546	23,465	54,438