

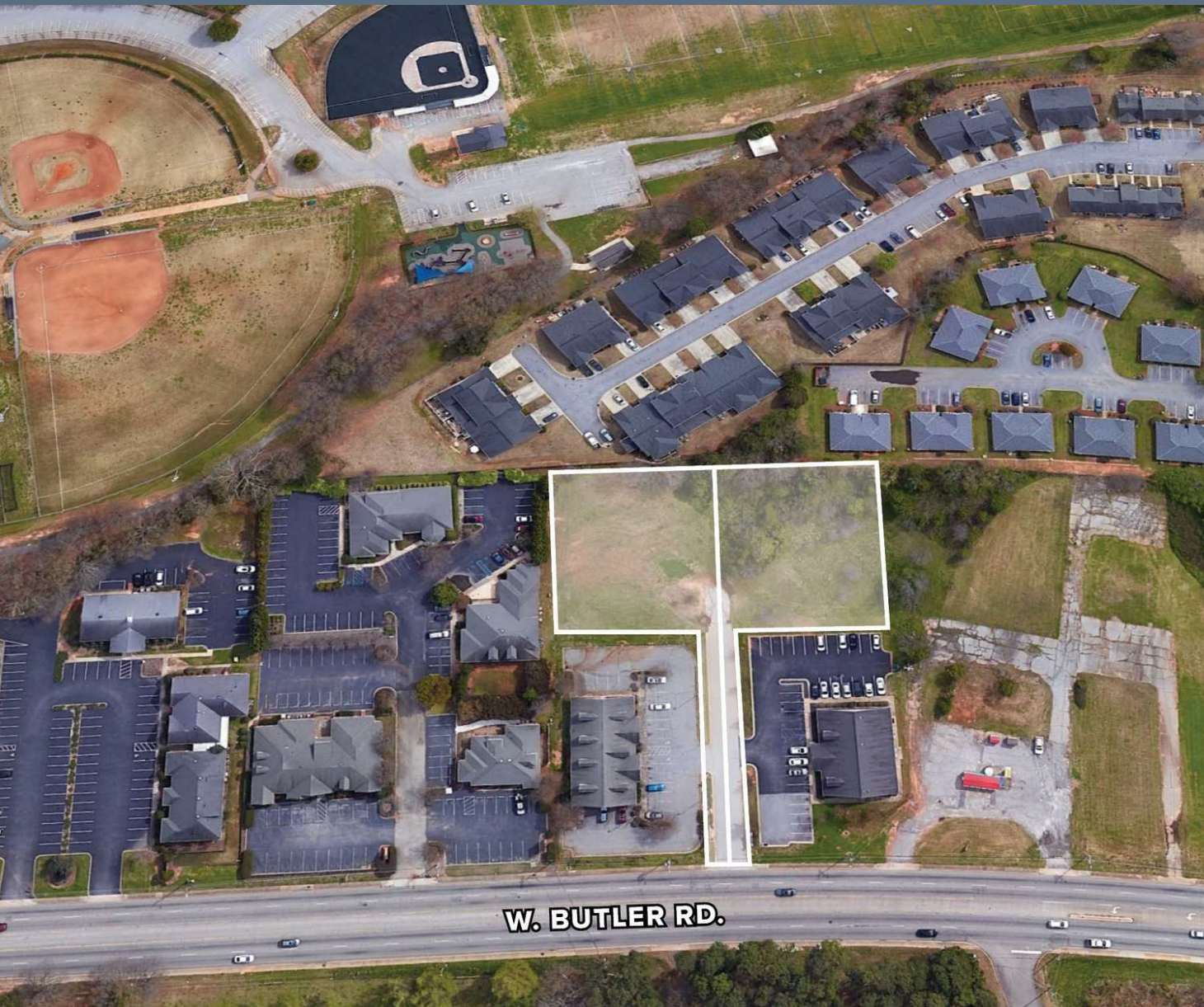
# 555 & 565 W. Butler Rd., Mauldin, SC 29607

## For Sale

\$240,000 PER PAD OR \$475,000 FOR BOTH

### 0.7 - 1.5 Acres Available

- Sites can be combined
- Quick access to I-85 and I-385
- Zoning: C-1
- Signage opportunities
- High-end professional office
- Close proximity to restaurants
- Public park directly behind the sites
- Located in a rapidly growing area





**555 & 565 W. Butler Rd., Mauldin, SC 29607**

**For Sale**

**\$240,000 PER PAD OR \$475,000 FOR BOTH**



**TRINITY  
PARTNERS**

Chisolm Nicholson, CCIM, SIOR / 864.270.8419 / [cnicholson@trinity-partners.com](mailto:cnicholson@trinity-partners.com)

1 N. MAIN STREET  
GREENVILLE, SC 29601  
[TRINITY-PARTNERS.COM](http://TRINITY-PARTNERS.COM)



# 555 & 565 W. Butler Rd., Mauldin, SC 29607

## For Sale

\$240,000 PER PAD OR \$475,000 FOR BOTH



Map data ©2024 Imagery ©2024 CNES / Airbus, City of Greenville GIS, Maxar Technologies, U.S. Geological Survey, USDA/FPAC/GEO

**TRINITY**  
PARTNERS

Chisolm Nicholson, CCIM, SIOR / 864.270.8419 / cnicholson@trinity-partners.com

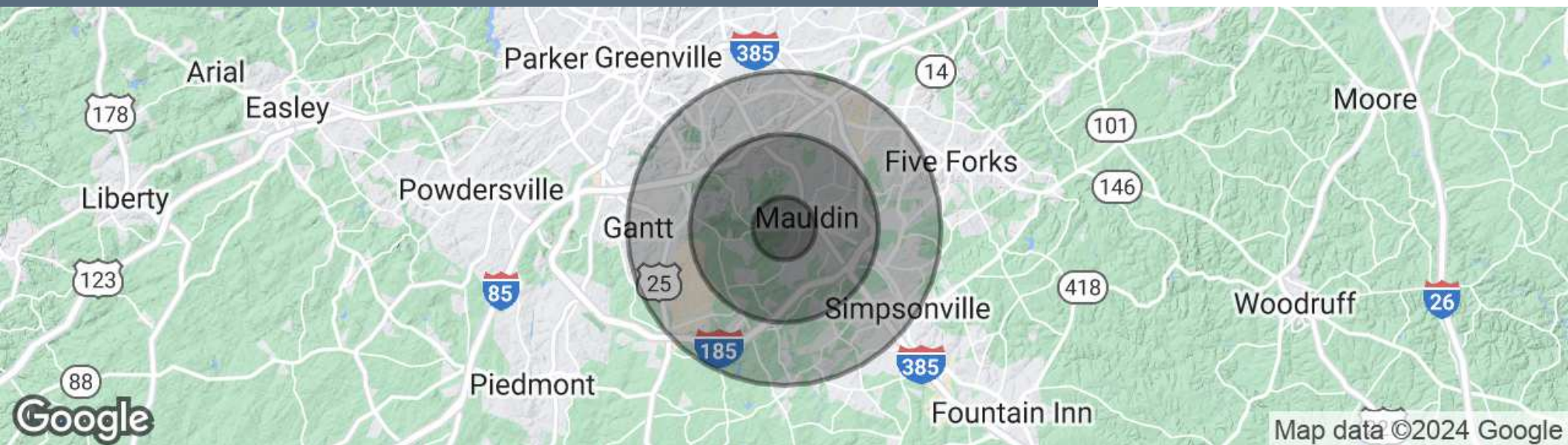
1 N. MAIN STREET  
GREENVILLE, SC 29601  
TRINITY-PARTNERS.COM



# 555 & 565 W. Butler Rd., Mauldin, SC 29607

## For Sale

\$240,000 PER PAD OR \$475,000 FOR BOTH



### Population

	1 Mile	3 Miles	5 Miles
Total Population	5,107	41,294	115,938
Average Age	37.4	37.3	37.6
Average Age (Male)	36.0	36.7	36.6
Average Age (Female)	39.9	38.1	39.1

### Households & Income

	1 Mile	3 Miles	5 Miles
Total Households	2,073	16,881	47,858
# of Persons per HH	2.5	2.4	2.4
Average HH Income	\$73,362	\$72,984	\$87,933
Average House Value	\$188,029	\$166,558	\$220,252

\* Demographic data derived from 2020 ACS - US Census