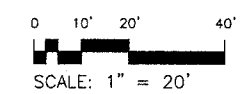
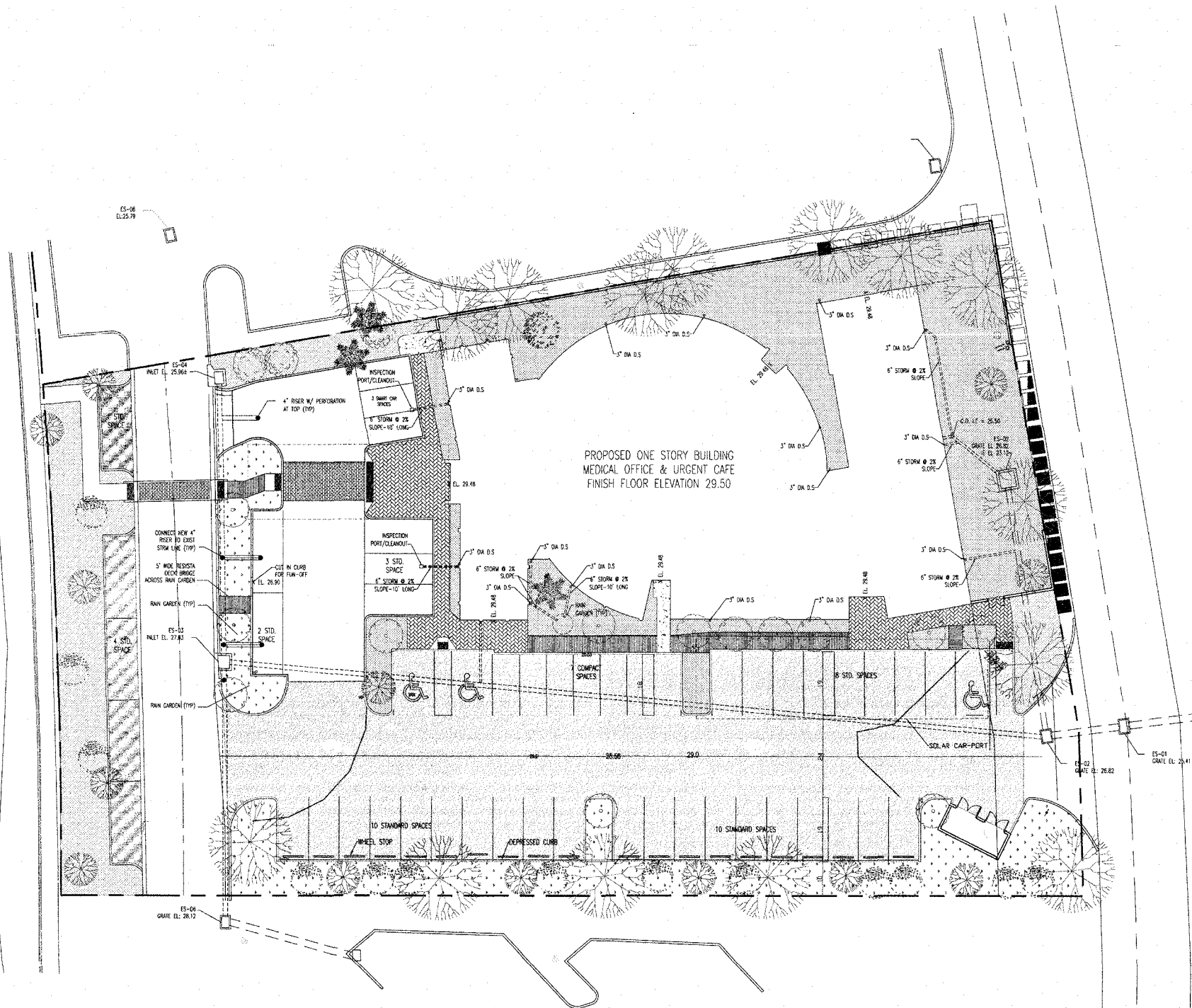


**FMD MEDICAL OFFICE BUILDING &  
URGENT CARE CENTER**

5234 LITTLE ROAD, NEW PORT RICHEY, FL 34655

**LEGEND**

- PERVIOUS PAVEMENT-BELGARD PAVING STONE OR APPROVED EQUAL
- PERVIOUS PAVEMENT-EZ- ROLL GRASS PAVERS OR APPROVED EQUAL
- BRICK PAVEMENT-PEDESTRIAN CROSSING
- HIGH ALBEDO CONC. RESURFACING-MIN. SRI 36
- BRICK SIDEWALK-HERRINGBONE PATTERN
- RESISTA DECKING W/ OPEN JOINTS
- CIP REPLACEABLE TACTILE PAVER (TYP)
- LANDSCAPE AREA (TYP)
- RAIN GARDEN/DRAINAGE SWALES (LID)



MARK	DATE	DESCRIPTION
△	07/16/2017	BULLETIN 01

ISSUE:	
SHEET TITLE:	SITE DEVELOPMENT PLAN
PROJECT NO:	14030909-S11
DATE:	07/16/2017
DRAWN BY:	
CHECKED BY:	

SHEET NO:  
**A-100**

SHEET: OF: