

1200

COLONIAL LIFE BLVD

IT'S ALL HERE.
READY RIGHT NOW.

» 10,885 – 80,815 SF

» Class A Sublease opportunity

» First floor fully leased

» Highly visible signage opportunity

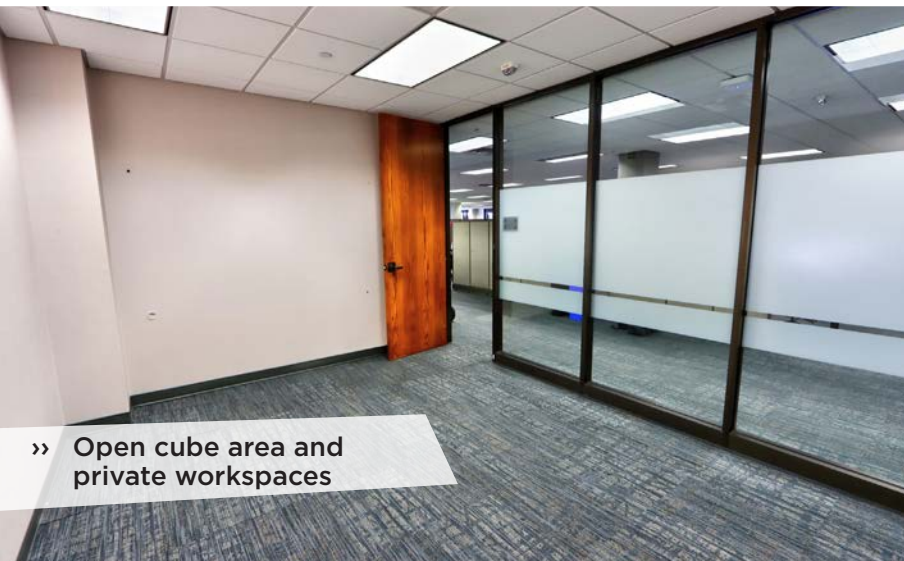
» On-site building security

» \$15.00 PSF Full Service

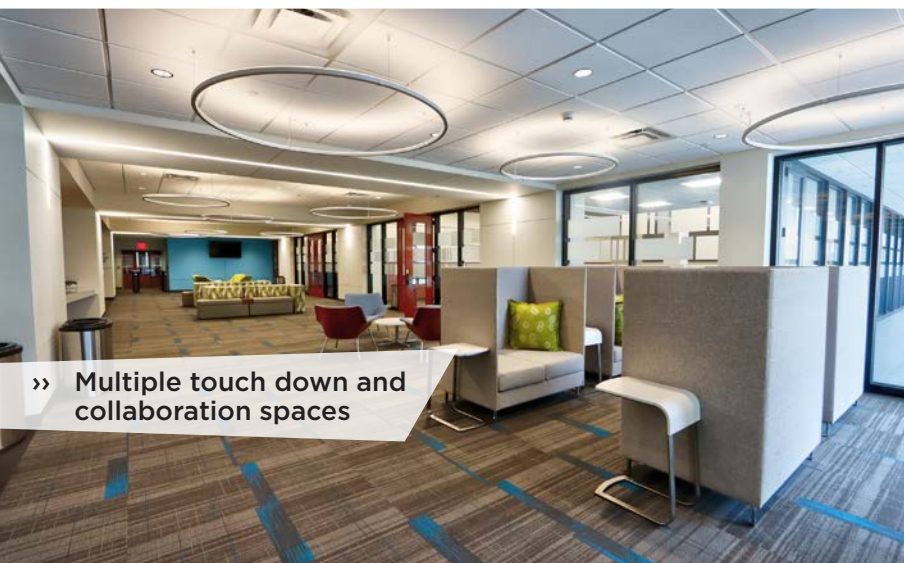
1200 Colonial Life Blvd. offers a beautiful campus setting near the intersection of I-20 and I-26, just 10 minutes and two exits from Downtown Columbia.



WORK



» Open cube area and private workspaces



» Multiple touch down and collaboration spaces



» Common area workspaces

LEARN MORE AND TAKE A TOUR

Roger Winn, SIOR | rwinn@trinity-partners.com | 803.567.1455
Braden Shockley | bshockley@trinity-partners.com | 803.567.1373

trinity-partners.com



EAT



» Full service food court



» Open atrium featuring Canteen

LEARN MORE AND TAKE A TOUR

Roger Winn, SIOR | rwinn@trinity-partners.com | 803.567.1455
Braden Shockley | bshockley@trinity-partners.com | 803.567.1373

trinity-partners.com



MEET



» Multimedia tech and conference rooms



» Conference and training center

LEARN MORE AND TAKE A TOUR

trinity-partners.com

Roger Winn, SIOR | rwinn@trinity-partners.com | 803.567.1455
Braden Shockley | bshockley@trinity-partners.com | 803.567.1373



MOVE

» Fitness center



LEARN MORE AND TAKE A TOUR

Roger Winn, SIOR | rwinn@trinity-partners.com | 803.567.1455
Braden Shockley | bshockley@trinity-partners.com | 803.567.1373

trinity-partners.com

TRINITY
PARTNERS

Location



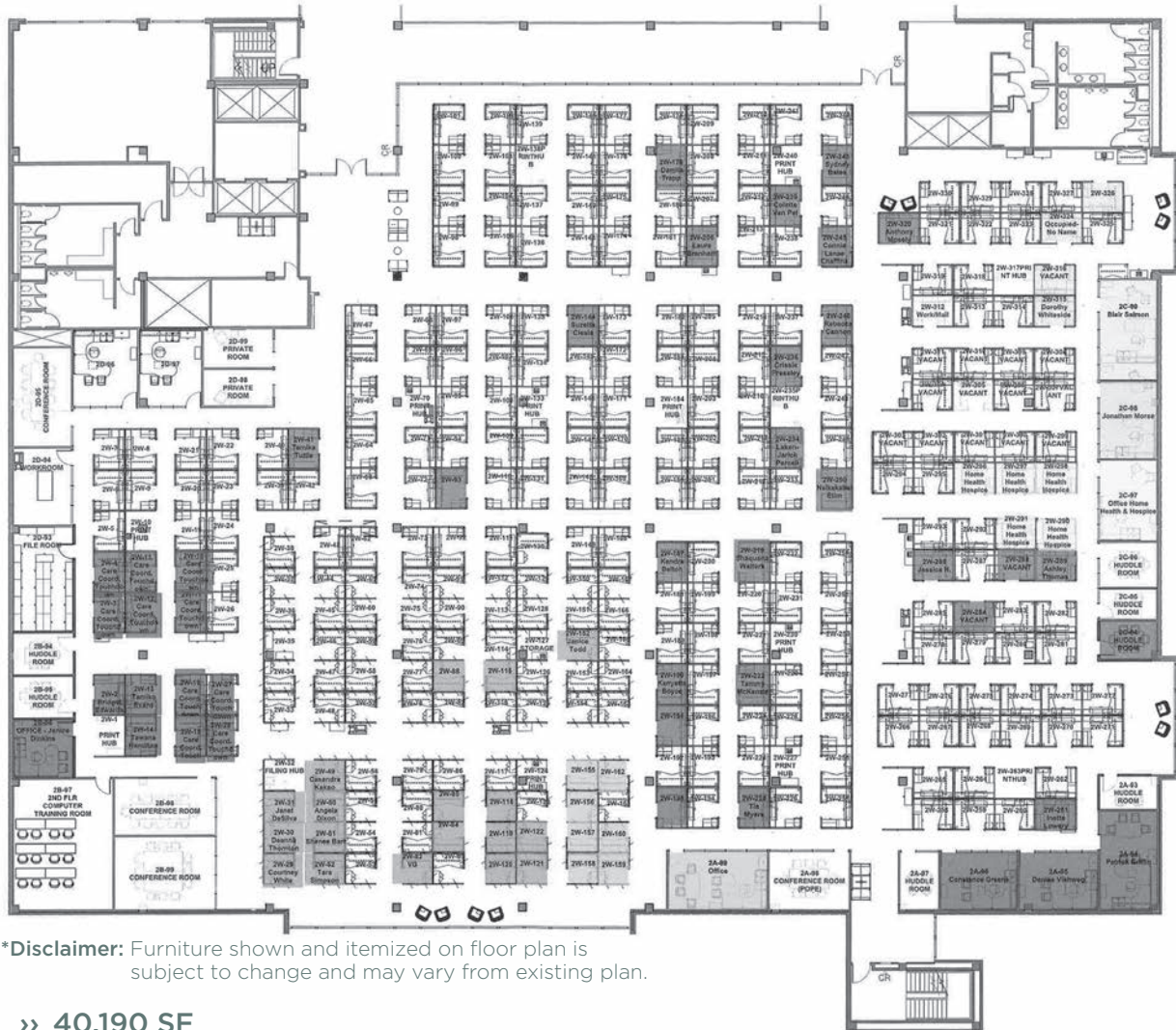
LEARN MORE AND TAKE A TOUR

Roger Winn, SIOR | rwinn@trinity-partners.com | 803.567.1455
Braden Shockley | bshockley@trinity-partners.com | 803.567.1373

trinity-partners.com

TRINITY
PARTNERS

Floorplan | Level 2



***Disclaimer:** Furniture shown and itemized on floor plan is subject to change and may vary from existing plan.

- » 40,190 SF
 - » 11 Offices
 - » 2 Private Rooms
 - » 314 Workstations
 - » 1 Filing Station
 - » 1 File Room
 - » 12 Print Stations
 - » 2 Storage Stations
 - » 1 Workroom
 - » 1 Training Room
 - » 6 Huddle Rooms
 - » 4 Conference Rooms
- » Master Lease Expiration: 12/31/2029

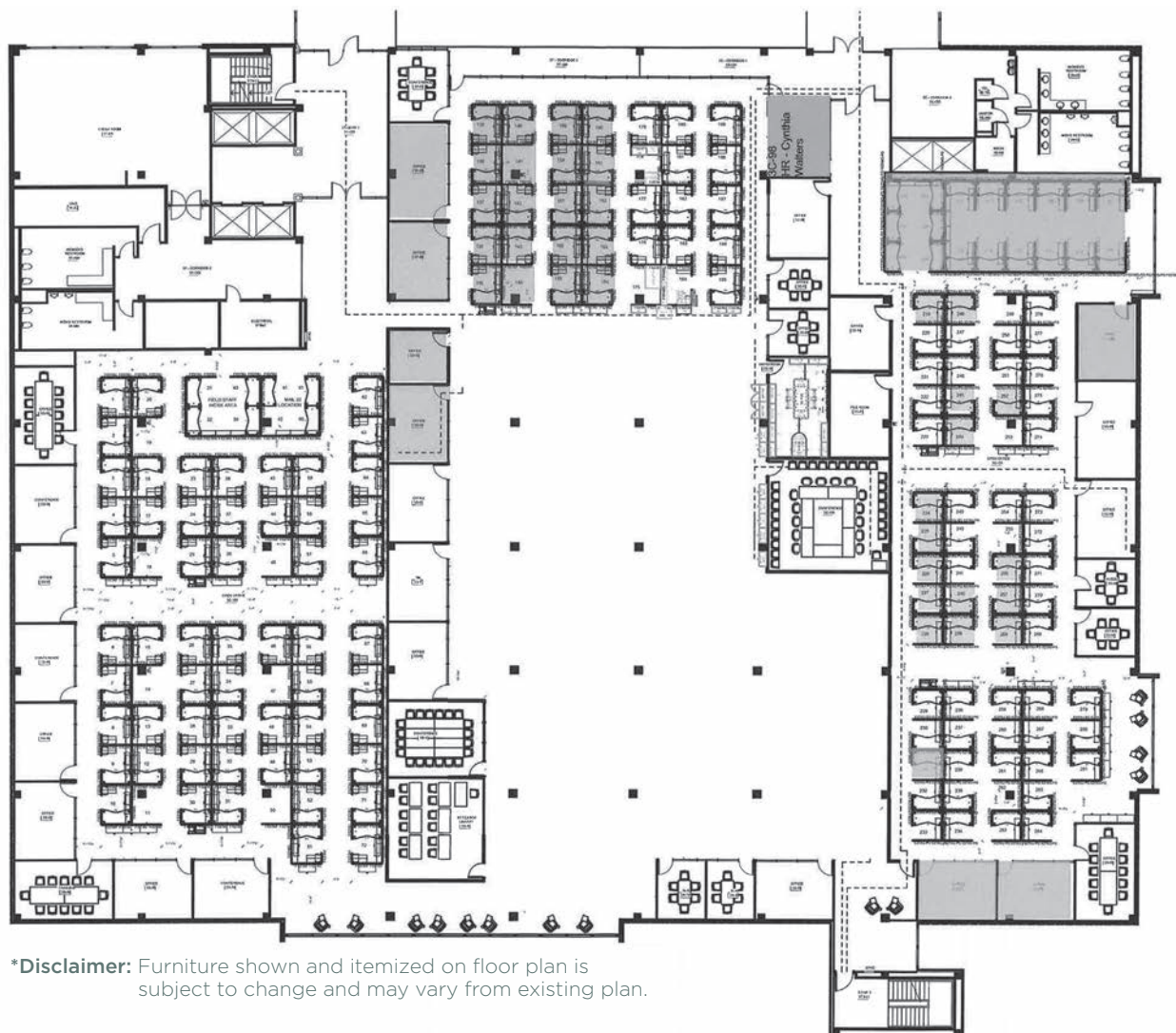
LEARN MORE AND TAKE A TOUR

Roger Winn, SIOR | rwinn@trinity-partners.com | 803.567.1455
 Braden Shockley | bshockley@trinity-partners.com | 803.567.1373

trinity-partners.com

TRINITY
PARTNERS

Floorplan | Level 3



***Disclaimer:** Furniture shown and itemized on floor plan is subject to change and may vary from existing plan.

- » 10,885 SF (already subdivided suite)
- » Up to 40,625 SF
- » Master Lease Expiration: 12/31/2029

LEARN MORE AND TAKE A TOUR

trinity-partners.com

Roger Winn, SIOR | rwinn@trinity-partners.com | 803.567.1455
Braden Shockley | bshockley@trinity-partners.com | 803.567.1373



1200

COLONIAL LIFE BLVD

LEARN MORE AND TAKE A TOUR

Roger Winn, SIOR

rwinn@trinity-partners.com

803.567.1455

Braden Shockley

bshockley@trinity-partners.com

803.567.1373

trinity-partners.com

TRINITY
PARTNERS