

M E R I D I A N

147 S. CHERRY STREET, SUITE 200 | WINSTON-SALEM, NC 27101 | P 336.722.1986 | F 336.723.3173 | MERIDIANREALTY.COM

For Sale: 1.709± Acres

# 2611 Reynolda Road

Winston-Salem, NC 27106



- 1.709± Acres
- Gentle topography
- Zoned RS-9
- Area Plan calls for office development
- Adjacent to Brighton Gardens and Sunnynoll Court Office Park
- Water, sewer, and gas are adjacent

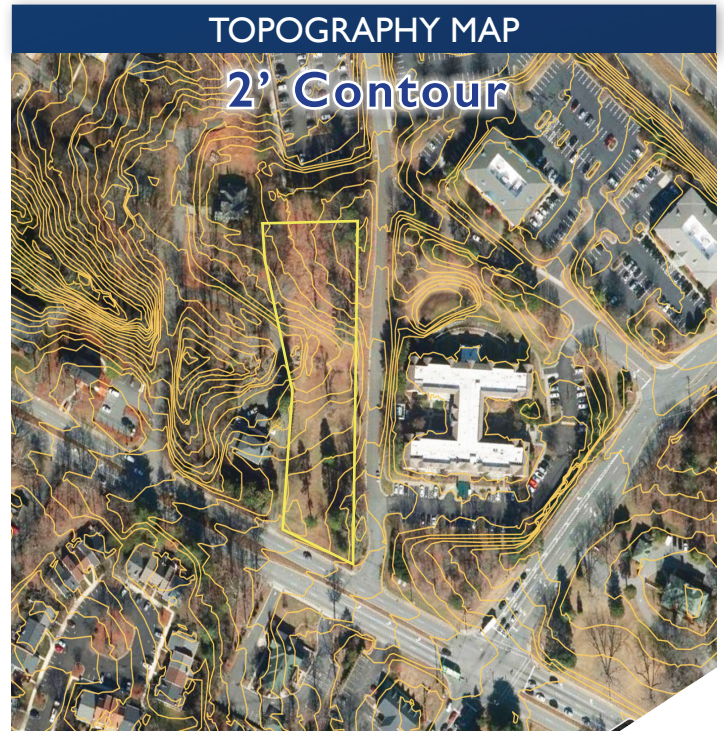
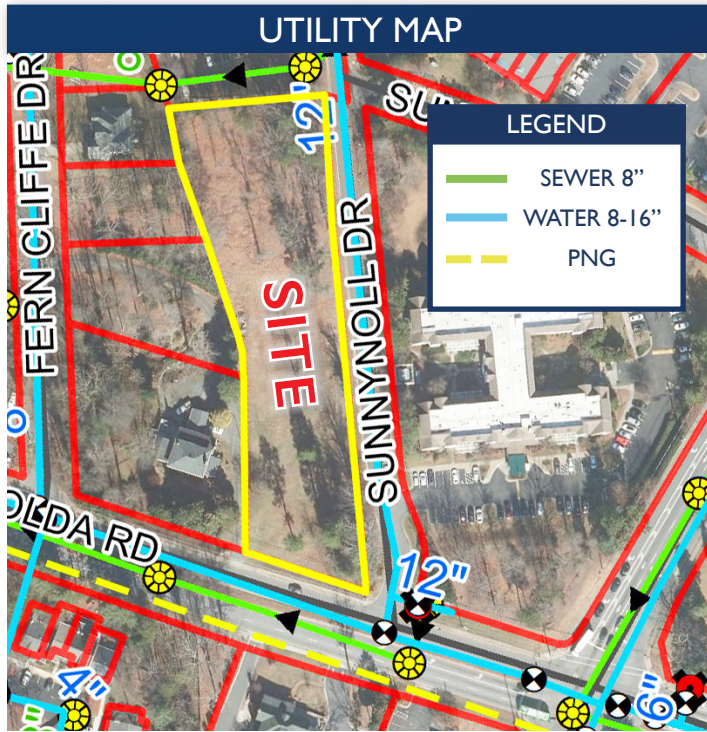


For more information:

**John L. Ruffin, CCIM**

Jruffin@meridianrealty.com  
336.480.2081

**FOR SALE: \$595,900**



**DEMOGRAPHICS**

Population	1 Mile: 9,127	2 Miles: 29,716
Households	1 Mile: 3,738	2 Miles: 12,221
Household Income	1 Mile: \$57,854	2 Miles: \$74,210



No warranty or representation (express or implied) is made as to the accuracy or completeness of the information set forth herein. All information is submitted subject to errors, omissions, change of price, prior lease or sale, and withdrawal without notice. All marketing material produced by the Meridian Realty Group is proprietary. Any reproduction is expressly prohibited.



THE MERIDIAN REALTY GROUP | 147 S. CHERRY STREET, SUITE 200 | WINSTON-SALEM, NC 27101  
P 336.722.1986 | F 336.723.3173