

2330 CAMBRELENG AVENUE, BRONX, NY 10458

FOR LEASE

# 800 SF BRAND NEW COMMUNITY FACILITY SPACE

Between East 183rd Street & East 187th Street



**SHLOMI BAGDADI**

212.433.3355 x101

sb@tristatecr.com

**TRI STATE COMMERCIAL®**



## PROPERTY SUMMARY

### LOCATION

Located in the Belmont neighborhood of the Bronx.

### HIGHLIGHTS

- Brand New Development

### SPACE DETAILS

- ADA Accessible
- Glass Frontage
- Vanilla Box

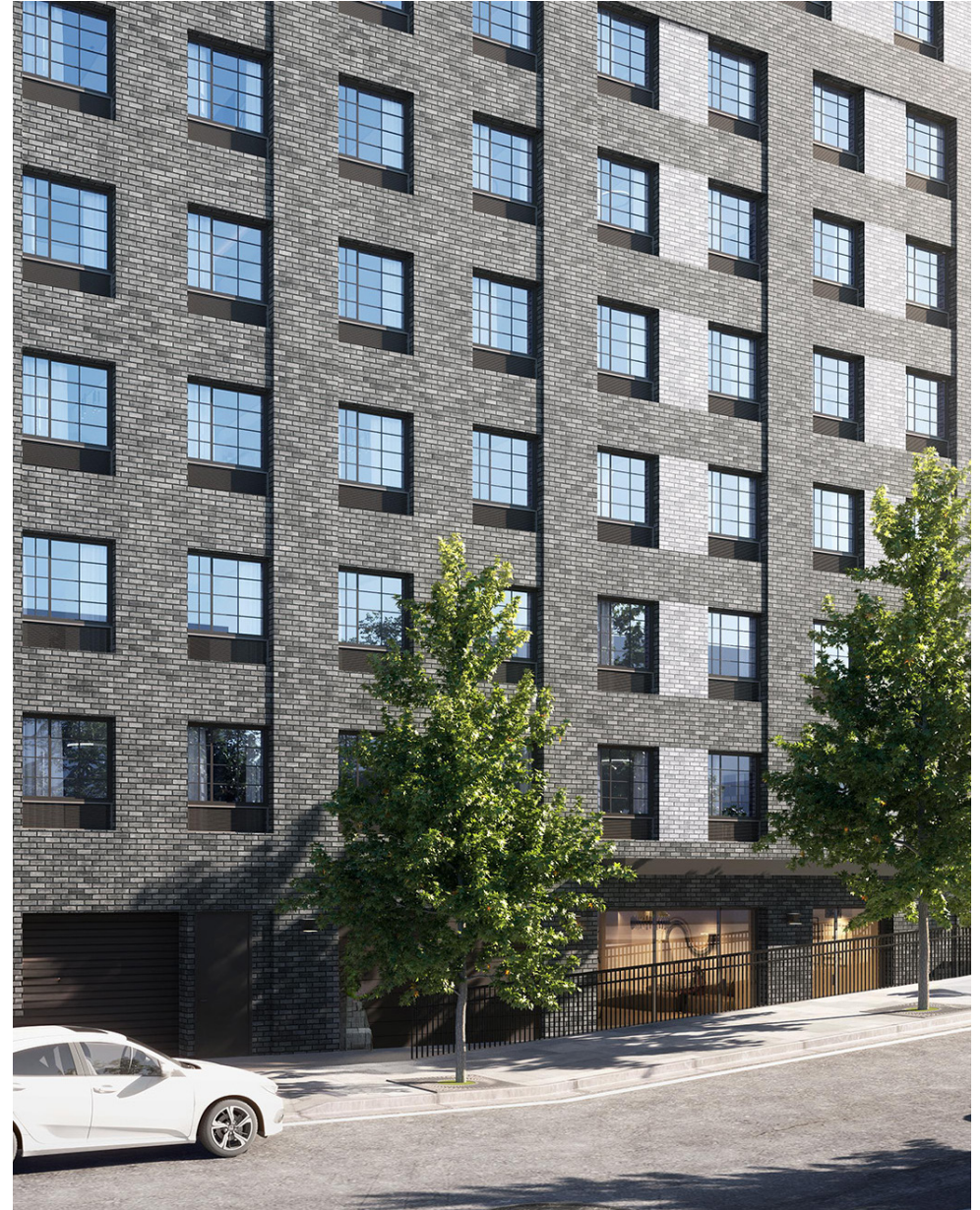
### TRANSPORTATION

**B D** Trains at 182nd-183rd Streets and Fordham Road

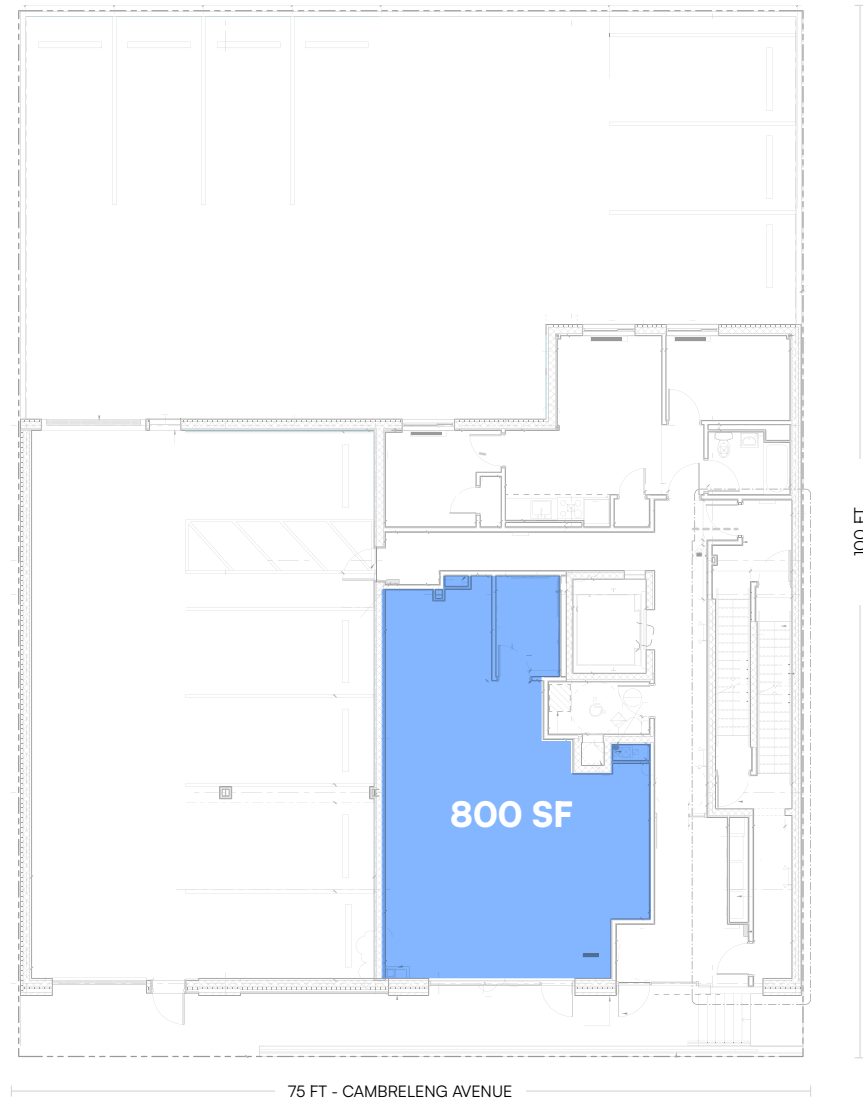
**BX17** Bus Line

### NEIGHBORS

CTown Supermarkets, Artuso Pastry Shop, The Bronx Beer Hall, Prince Coffee House, Roberto's, Enzo's, Rite Aid, McDonald's, Terranova Bakery, Roberto's, and more!



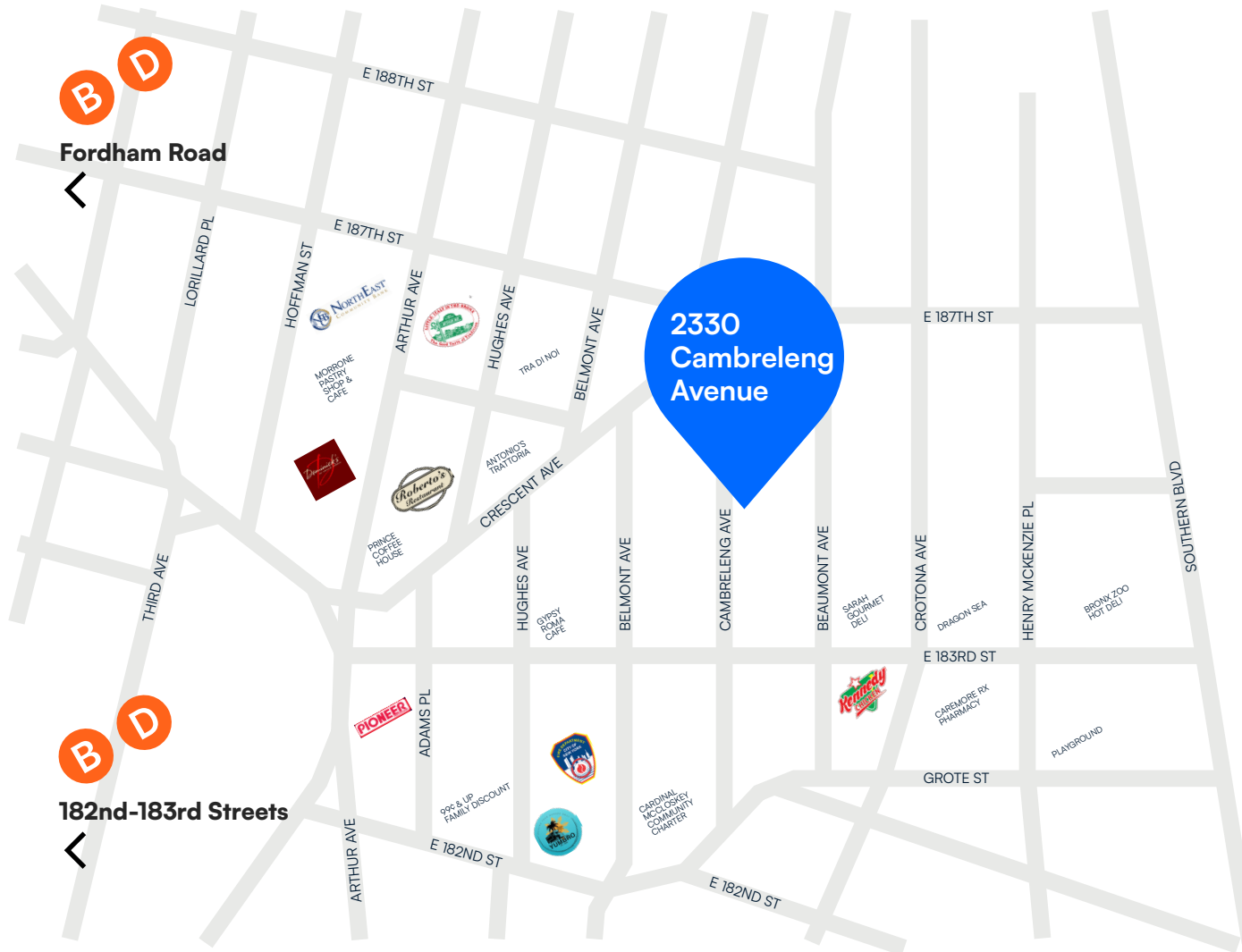
## FLOOR PLANS



### FIRST FLOOR

All square footages are approximate

## RETAIL MAP



2330 CAMBRELENG AVENUE, BRONX, NY 10458

# 800 SF BRAND NEW COMMUNITY FACILITY SPACE

Between East 183rd Street & East 187th Street

For Pricing Call: **212.433.3355**

**SHLOMI BAGDADI**  
212.433.3355 x101  
sb@tristatecr.com

**TSC.**