

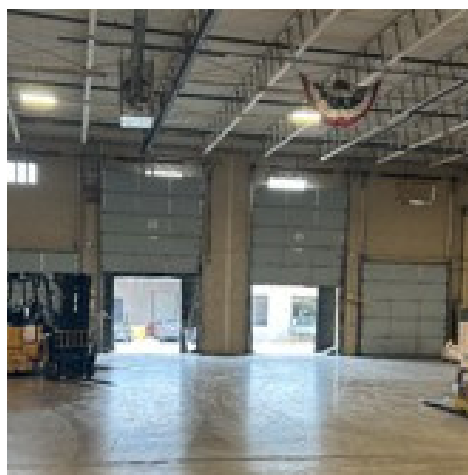
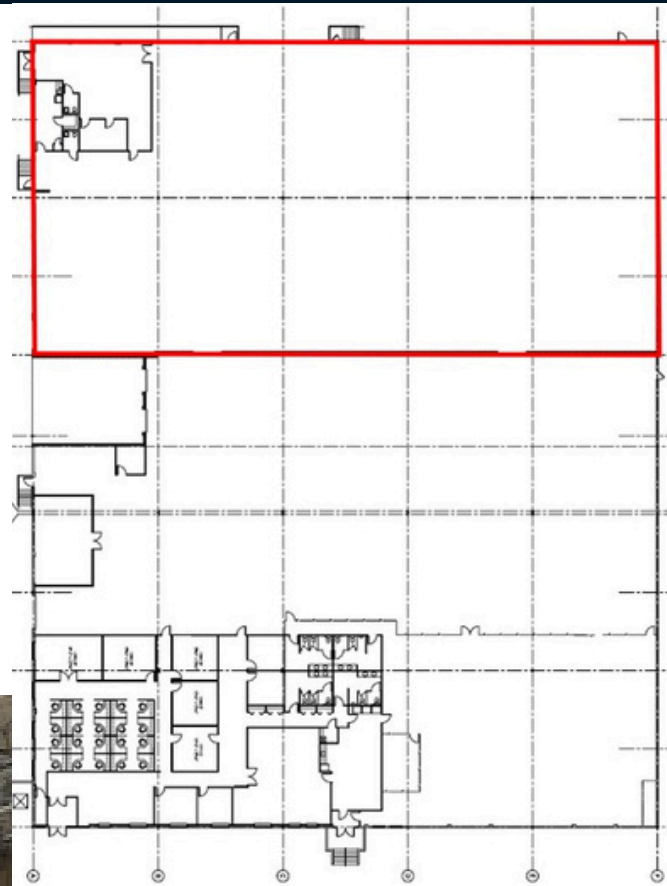
For sublease

21,000 SF fully demised

419 Boot Road
Downingtown, PA

Property specifications

- Warehouse/FLEX sublease
- 4 loading docks
- 21' clear height
- Fully sprinklered
- Racking could be made available
- Available immediately
- Asking \$11.00/SF NNN



Eric Wahlers

Senior Managing Director
eric.wahlers@jll.com
+1 610 585 7114

TJ Romano

Associate Vice President
tj.romano@jll.com
+1 609 658 7266

Jones Lang LaSalle Brokerage, Inc.

550 E. Swedesford Road, Suite 260
Wayne, PA 19087
+1 610 249 2255