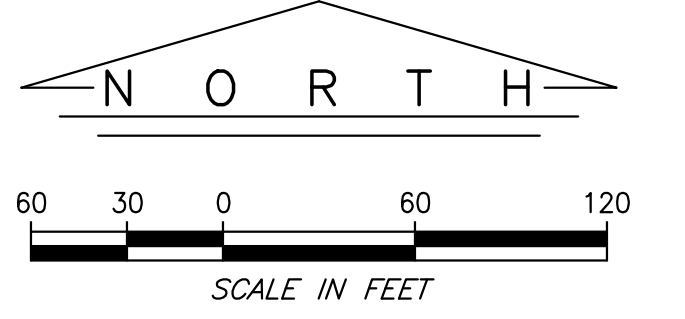


NOTE: BUILDING ADDRESSES SHOWN ON SHEET 4



INDEX TO SHEETS

1. SURVEY PLAT
2. SURVEYOR'S REPORT / LEGEND / KNOWN PRIOR SURVEYS
3. GENERAL NOTES / UTILITIES NOTE / REPORTED EASEMENTS
4. BUILDING DIMENSIONS
5. SURVEY DETAILS / ENCROACHMENTS
6. AERIAL ORTHOPHOTO OF 2011

PARKING SPACES

NUMBER OF REGULAR PARKING SPACES:	1,196
NUMBER OF ACCESSIBLE PARKING SPACES:	23
<b>TOTAL NUMBER OF PARKING SPACES:</b>	<b>1,219</b>

⊙ INDICATES AREA OF PAVEMENT WHERE FAINT REMNANTS OF STRIPING PAINT WERE OBSERVED IN FIELD WHERE PARKING SPACES MAY BE OR MAY HAVE BEEN AND THUS NOT ABLE TO CONFIRM.

AREA SUMMARY

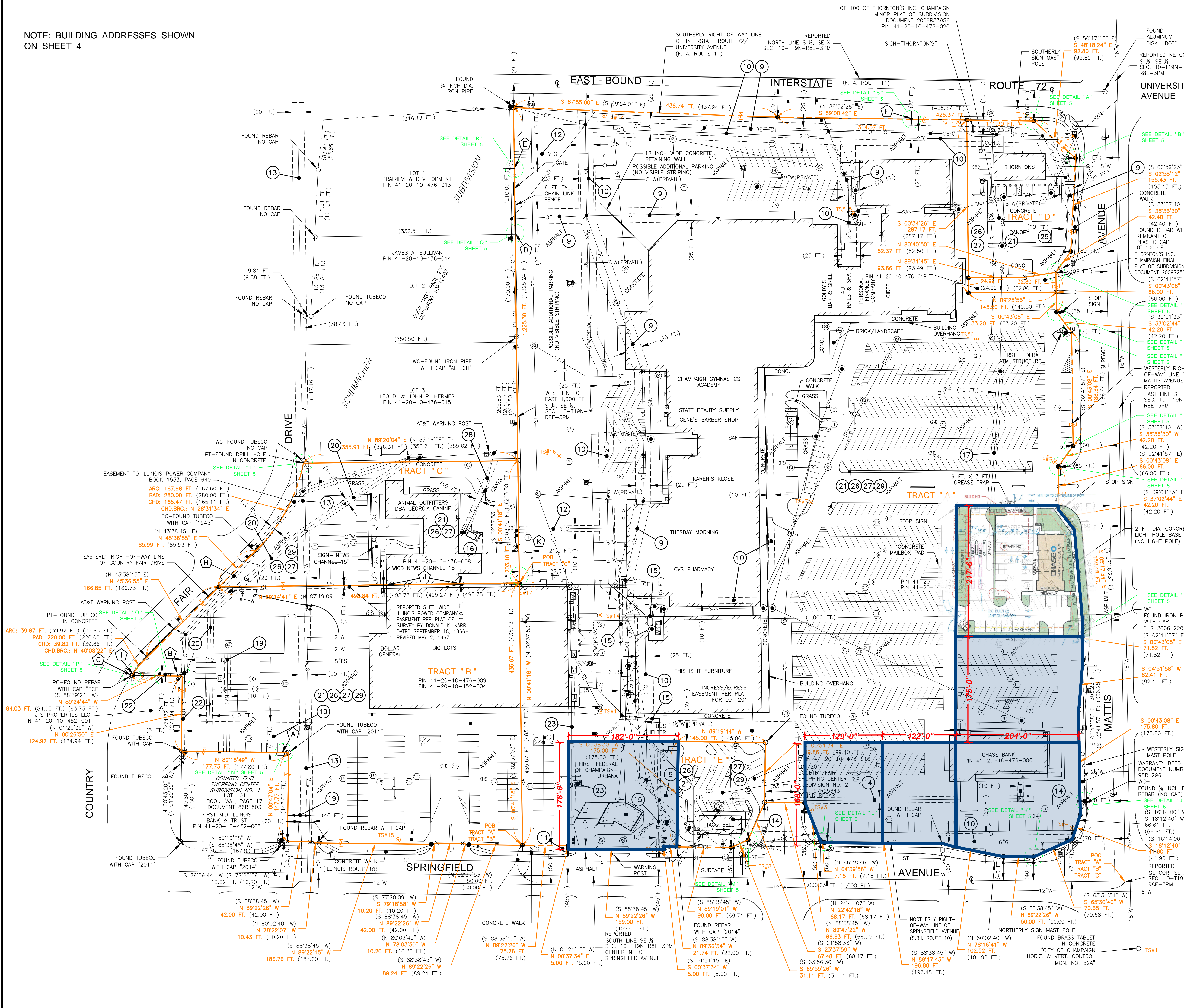
TRACT "A":	23.87 ACRES ±
TRACT "B":	4.98 ACRES ±
TRACT "C":	1.92 ACRES ±
TRACT "D":	1.07 ACRES ±
TRACT "E":	0.55 ACRES ±
<b>TOTAL:</b>	<b>32.39 ACRES ±</b>

SURVEY PLAT

ALTA / ACSM LAND TITLE SURVEY  
COUNTRY FAIR SHOPPING CENTER  
CITY OF CHAMPAIGN,  
CHAMPAIGN COUNTY, ILLINOIS

**BERNS, CLANCY AND ASSOCIATES**  
ENGINEERS • SURVEYORS • PLANNERS  
405 EAST MAIN STREET - POST OFFICE BOX 755  
URBANA, ILLINOIS 61803-0755  
PHONE: (217) 384-1144 - FAX: (217) 384-3355

EDWARD L. CLANCY  
ILLINOIS PROFESSIONAL LAND SURVEYOR 2207  
LICENSE EXPIRATION: NOVEMBER 30, 2014  
URBANA, CHAMPAIGN COUNTY, ILLINOIS  
ILLINOIS PROFESSIONAL DESIGN FIRM 2999  
LICENSE EXPIRATION: APRIL 30, 2015



J. U. L. I. E.  
NOTE: THE EXACT LOCATION OF ALL UTILITIES SHALL BE VERIFIED BY THE CONTRACTOR PRIOR TO CONSTRUCTION ACTIVITIES. FOR UTILITY LOCATIONS CALL: J.U.L.I.E. (800) 892-0123