



For sublease

8500 Steller Drive, Culver City, 3,700 - 7,848 RSF Available

8500 Steller Drive / Culver City

Rate

\$3.25/NNN

Nets are appx \$.90 per SF

Size

Total - 7,848 rsf

Building 6 - 4,148 rsf

Building 7 - 3,700 rsf

Availability

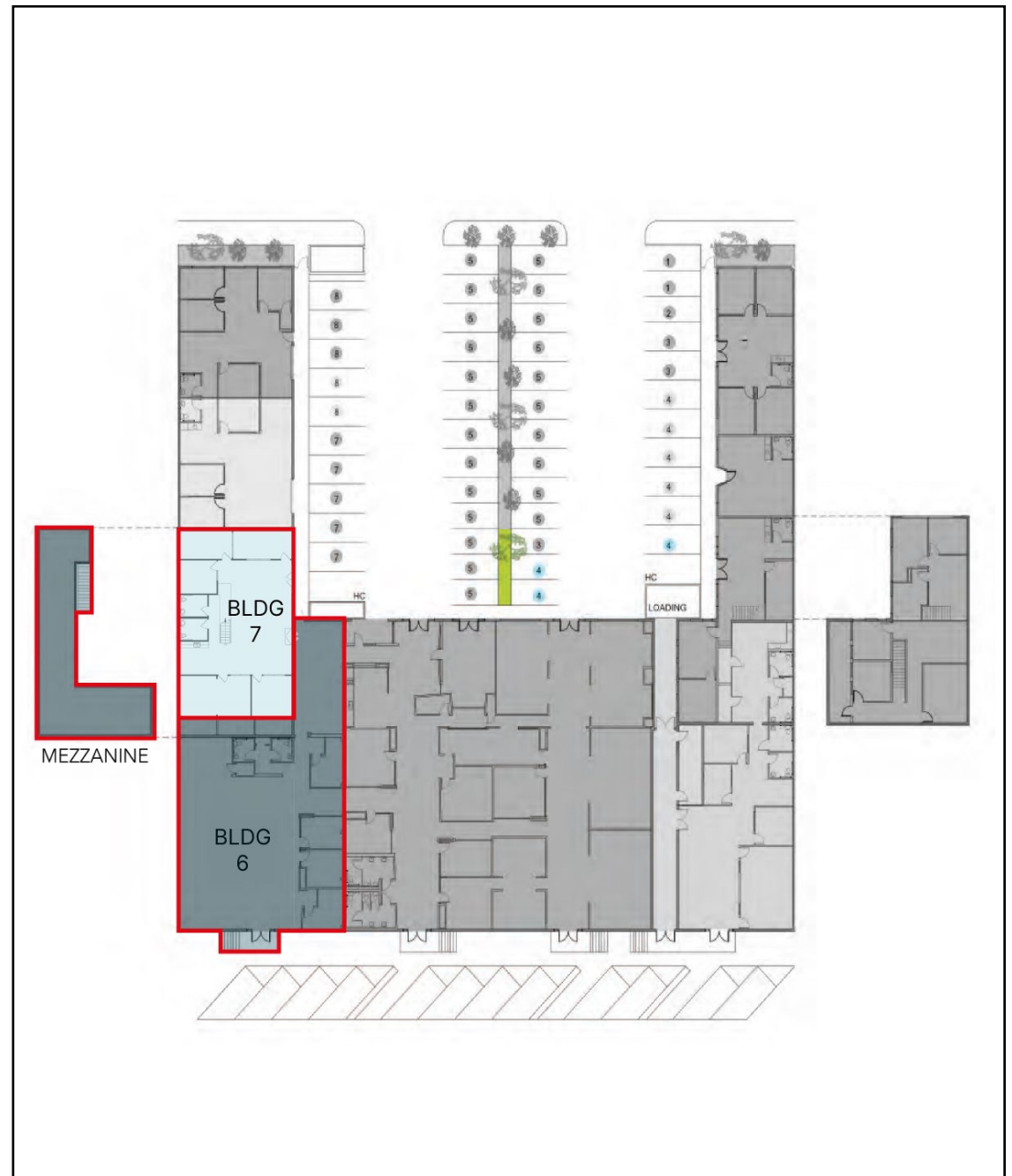
Immediate

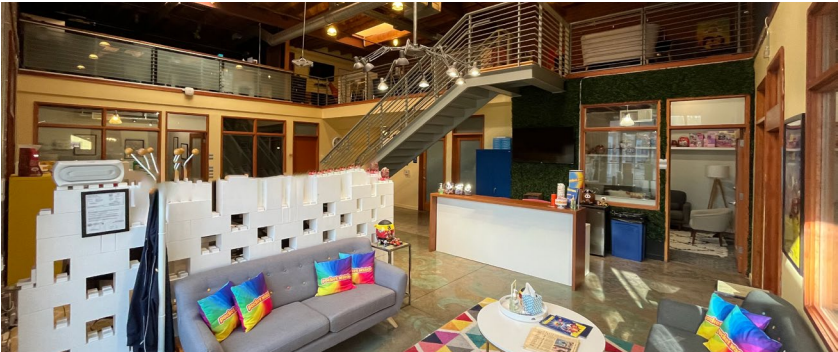
Term

Through 1/31/28

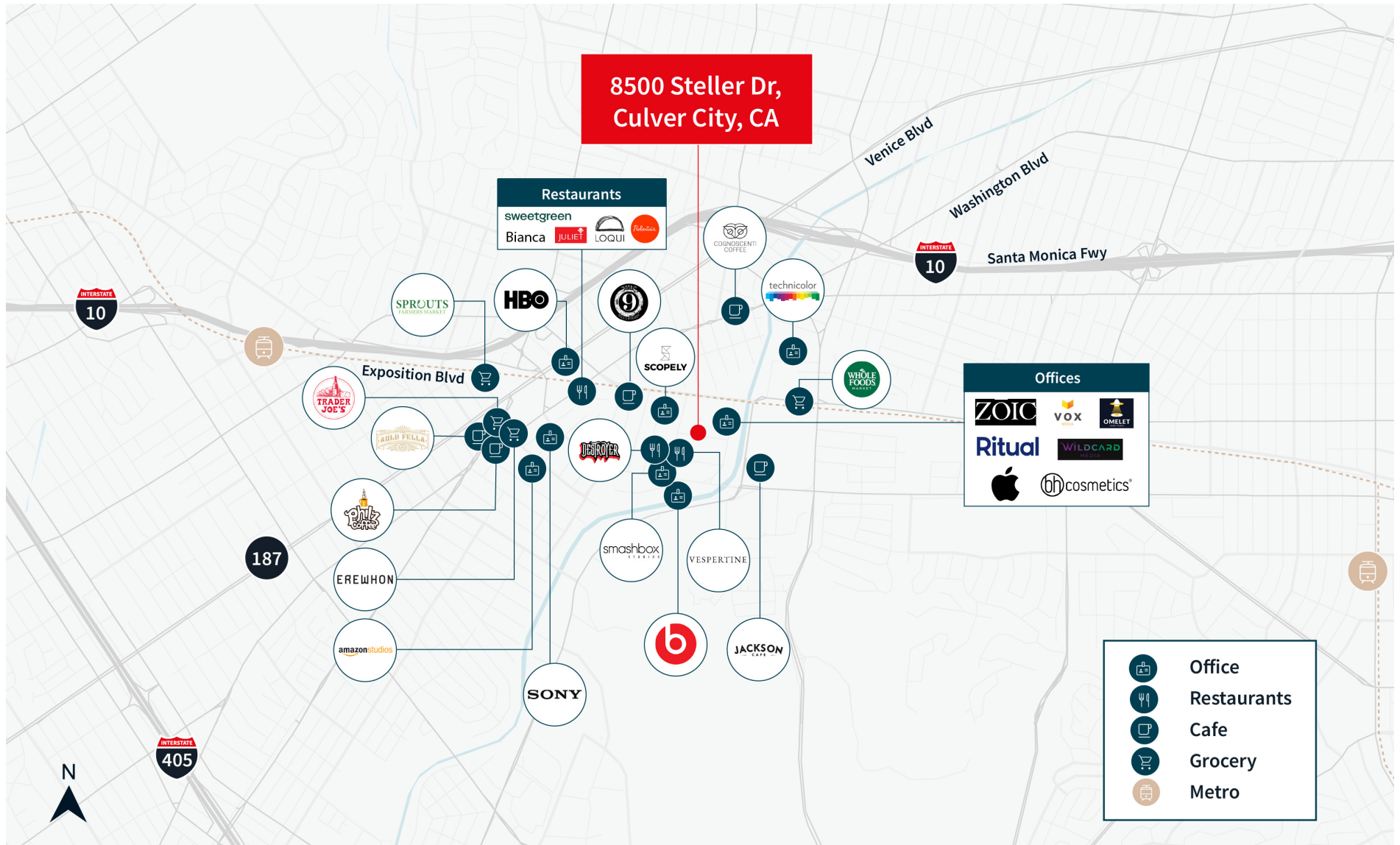
Features

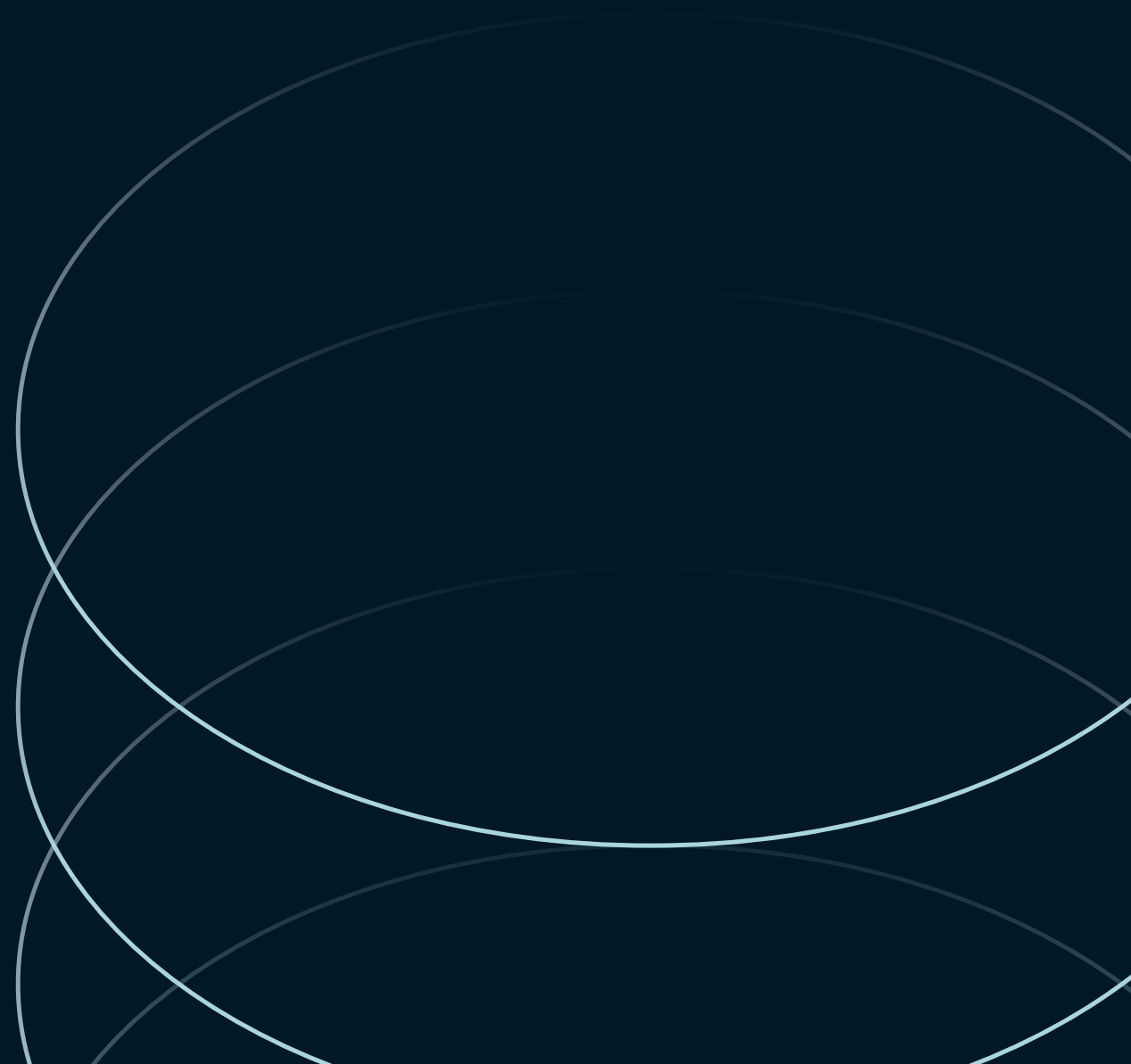
- 20 parking spaces
- Creative space with a mix of private offices, open space, production and studio space
- Space can be delivered as a whole or demised
- Furniture negotiable
- Kitchen, skylights, polished concrete floors, private restrooms
- Stones throw away from Destroyer
- Longer term direct deal possible





8500 Steller Drive / Culver City





Josh Rand

Lic. 01857606

josh.rand@jll.com

310-943-5153

Mac Burrige

Lic. 01968091

mac.burrige@jll.com

630-415-6554