

For sale

±1,862 SF Office/Warehouse Building

705 West Northtown Road, Kirksville, MO



Property specifications

Building Size:	±1,682 SF	Site Area:	±1.29 acres
Floors:	1	Parking Spaces:	±25, plus additional outside storage
Type of Construction:	Masonry building with additional metal framed car port and metal storage buildings in rear	Power:	225 amp, 3-Phase electrical service
		Sale price:	\$135,000

Property photos

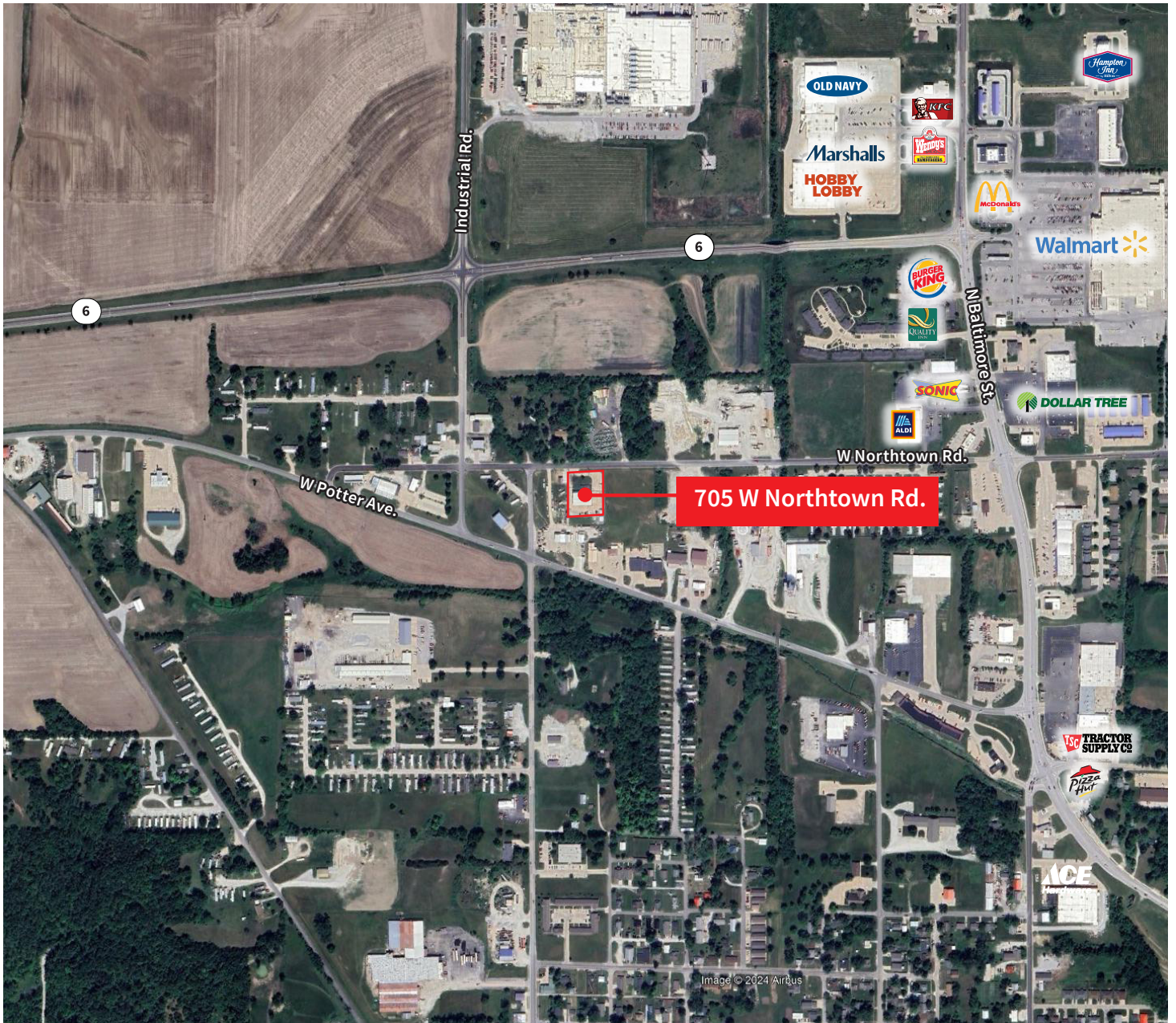


Kevin Wilkerson
Kevin.Wilkerson@jll.com
+1 913 469 4601

Phil Algrim
Phil.Algrim@jll.com
+1 913 469 4605

Ben Cadenas
Ben.Cadenas@jll.com
+1 913 469 4609

Location



Kevin Wilkerson
Kevin.Wilkerson@jll.com
+1 913 469 4601

Phil Algrim
Phil.Algrim@jll.com
+1 913 469 4605

Ben Cadenas
Ben.Cadenas@jll.com
+1 913 469 4609