



Price Reduced!! Stable Income Asset For Sale

0.61 acres with brand new express car wash building. Fully leased to car wash operator.



420 Fieldstone Road
Gardendale, AL 35071

- 4,077 square foot building
- Lease in place until 2042!
- Average annual base rent \$383,475
- **Cap rate 6.55%**
- **Price: \$5,854,580**

Leased to Mach-1 Express
Wash until 2042!!

WELSH COMMERCIAL

Tom Welsh

303-808-8570

tom@welshcommercial.com

www.welshcommercial.com

BLACK LABEL

Chris Coble

303-506-9780

chris@blacklabelre.net

www.blacklabelre.net

GREENWOOD CRE

James Pitts

404-229-4801

james@greenwoodcre.com

www.greenwoodcre.com

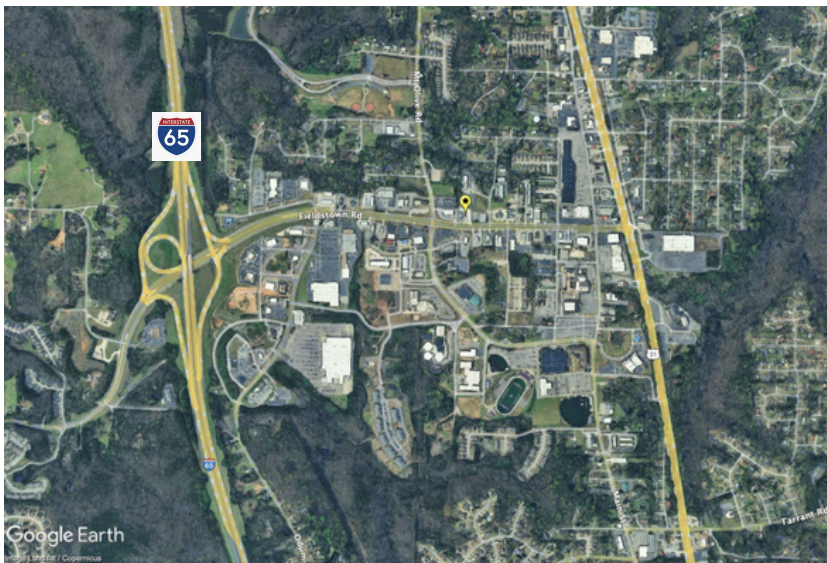
The information has been secured from sources we believe to be reliable, but we make no guarantees of warranties, expressed or implied, as to the accuracy of the information. References to square footage and age are approximate. Buyers and/or Tenants must verify the information at their own cost and expense.

Stable Income Asset For Sale

420 FIELDSTOWN ROAD GARDENDALE, AL

This property located in Gardendale, AL consists of 0.61 acres of property with 4,077 building square feet constructed in 2023 as a brand new express car wash operated by Mach-1 Express Wash. Mach-1 has a lease in place until 2042.

This property is part of a two building portfolio in Alabama. The second building and property are also available for sale and it is leased to Mach-1 Express Wash as well. Please ask for more information on the second property.



WELSH COMMERCIAL
Tom Welsh
303-808-8570
tom@welshcommercial.com
www.welshcommercial.com

BLACK LABEL
Chris Coble
303-506-9780
chris@blacklabelre.net
www.blacklabelre.net

GREENWOOD CRE
James Pitts
404-229-4801
james@greenwoodcre.com
www.greenwoodcre.com



The information has been secured from sources we believe to be reliable, but we make no guarantees of warranties, expressed or implied, as to the accuracy of the information. References to square footage and age are approximate. Buyers and/or Tenants must verify the information at their own cost and expense.