

 SOUTH PARK GROUP

618½

FOR LEASE — 618½ N. Doheny Drive



618 1/2 N. DOHENY DR.

618 <sup>1/2</sup> N. DOHENY DRIVE  
WEST HOLLYWOOD, CA

Located in the heart of West Hollywood, this office space is perfect for tenants looking for space on the 2nd floor



### USE

Office



### SIZE

± 648 SF



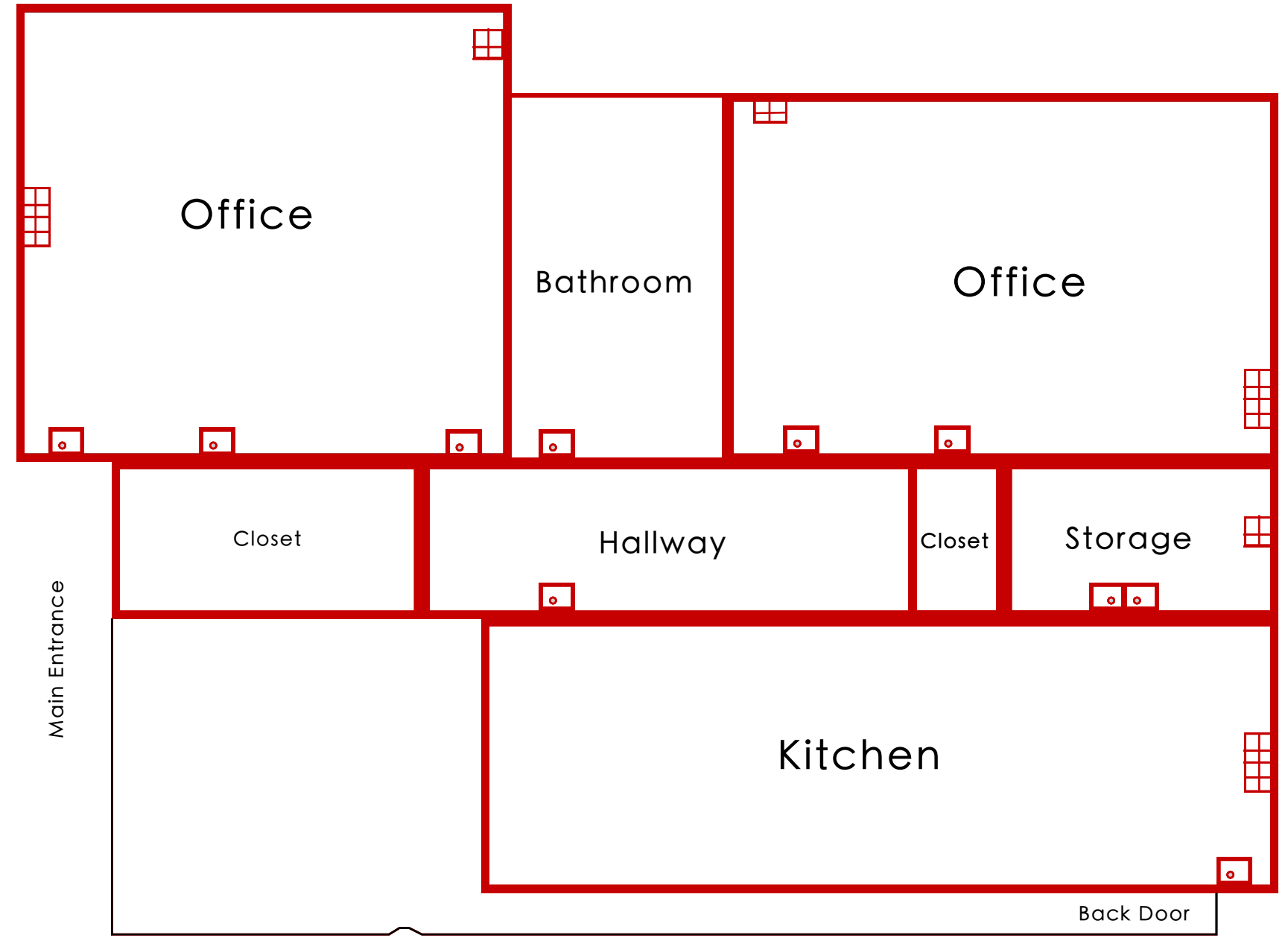
### RATE

\$2,500 / Month, MG



### PARKING

Street Parking







# AREA OVERVIEW

THE PROPERTY IS LOCATED IN THE HEART OF WEST HOLLYWOOD ON THE SECOND FLOOR ABOVE GROUND FLOOR RETAIL SPACES. THE AREA IS ACTIVE WITH DAYTIME FOOT TRAFFIC FROM SHOPPERS AND OFFICE TENANTS IN THE NEIGHBORHOOD. TENANTS IN THE AREA INCLUDE BRAVO TOAST, GREAT WHITE, GRACIAS MADRE, SOLIDCORE, PAVILIONS, HAUSER & WIRTH, PETIT ERMITAGE, PIZZANA AND MANY MORE.



# CONTACT

SAM MINASIAN

[SAMMINASIAN@SOUTHPARKGROUP.COM](mailto:SAMMINASIAN@SOUTHPARKGROUP.COM)

(323) 782-1261

DRE # 01212823

MANE AJARYAN

[MANE@SOUTHPARKGROUP.COM](mailto:MANE@SOUTHPARKGROUP.COM)

(818) 523-4997

DRE # 02099173

 **SOUTH PARK GROUP**

