

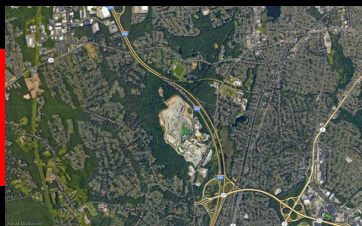


Prime Redevelopment

COMMERCIAL LAND FOR SALE

1987 - 1931 Plainfield Pk - Johnston / Cranston line, RI

**NEW PRICE
\$7.9M**



FEATURES

6+/- Acres Zoned B2 GB

850 +/-ft Frontage on Rte 14

TRAFFIC

AVG 17k VPD w/100% visability

HWY ACCESS

Close proximity to I-295 N/S

DEMOGRAPHICS

Median HH Inc \$122K

CONTACT



+401-623-0317



LMarchettiRealtor@gmail.com



387 Main St
East Greenwich, RI 02818