



YANKEE SQUARE

3460, 3464, & 3470
WASHINGTON DRIVE
EAGAN, MINNESOTA



LOCATION

- Conveniently located off I-35E at Pilot Knob and Yankee Doodle Roads.
- Close to shopping, hotels, banks, and dining.
- Strong job market in Dakota county's largest city.
- Quick access to Minneapolis/St. Paul Int'l Airport.

SPACE PLAN ATTACHED FOR SUITE 125 at 3464 WASHINGTON DR.

SPACE PLAN ATTACHED FOR SUITE 115 at 3470 WASHINGTON DR.

AMENITIES



Conference Rooms



On-Site Owner



Flexible Suites



Free Parking




Nearby Lodging



Nearby Dining

CONTACT: BRUCE MILLER

www.mfcproperties.com

 (612) 209-7213

 bmiller@mfcproperties.com

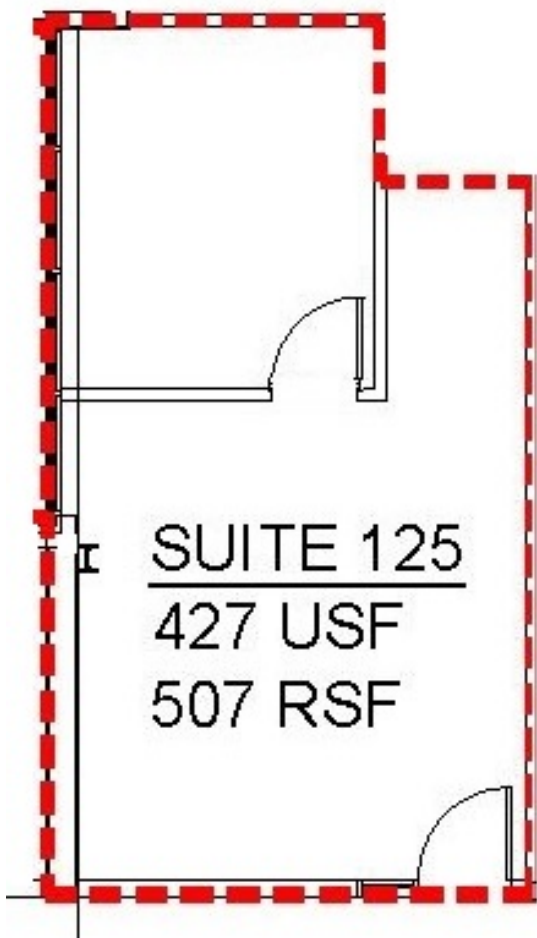
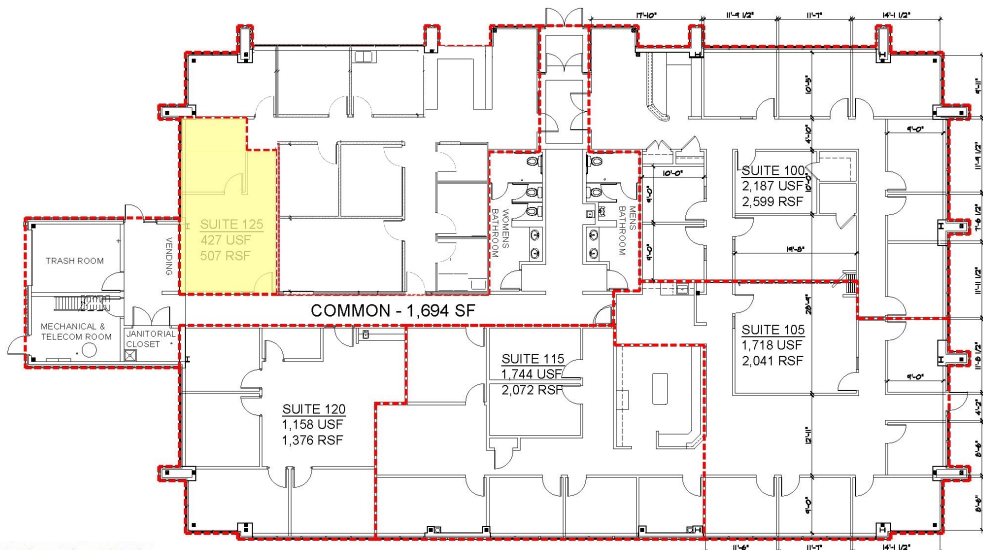


3460 Washington Drive,
Suite 100 Eagan, MN 55122

**YANKEE SQUARE
OFFICE PARK
- BUILDING III**

OFFICE SPACE FOR LEASE
3464 Washington Drive, Suite 125

BUILDING FLOOR PLAN | Office Space



SUITE 125

AVAILABLE:
507 Rentable Square Feet



Bruce Miller
3460 Washington Drive, Suite 100
Eagan, MN 55122

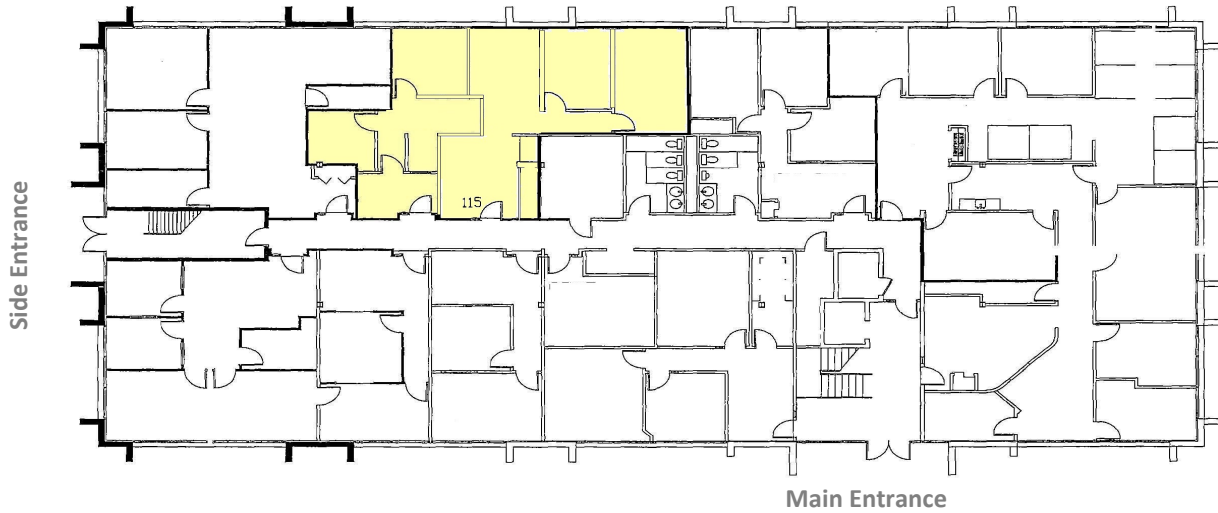
www.mfcproperties.com
Phone: 651.288.7540
Mobile: 612.209.7213
bmiller@mfcproperties.com

**YANKEE SQUARE
OFFICE PARK
- BUILDING II**

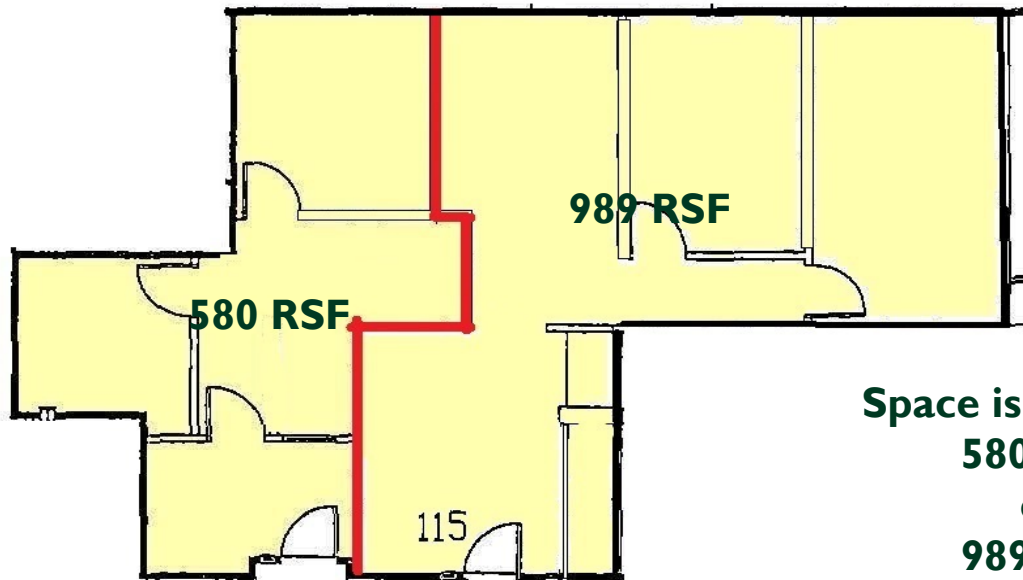
OFFICE SPACE FOR LEASE
3470 Washington Drive, Suite 115

BUILDING FLOOR PLAN | Office Space

FIRST FLOOR



AVAILABLE: 1,569 Rentable Square Feet



**Space is dividable:
580 RSF
or
989 RSF**



MFC
PROPERTIES CORPORATION

Bruce Miller
3460 Washington Drive, Suite 100
Eagan, MN 55122

www.mfcproperties.com
Phone: 651.288.7540
Mobile: 612.209.7213
bmiller@mfcproperties.com