



FOX TOWER RETAIL

710 SW YAMHILL ST, PORTLAND, OR 97205

FOR LEASE



Premium Retail Leasing Opportunity in the Heart of Downtown Portland

The iconic Fox Tower sits at the corner of SW Broadway and Yamhill, the center point of the retail core. Explore this opportunity for a flagship position in the heart of downtown up to a combined 22,048 RSF.

NICK KASSAB

Senior Vice President

503-880-8400

nick.kassab@capacitycommercial.com



100

Walk Score®
"Walker's Paradise"



93

Bike Score®
"Biker's Paradise"



96

Transit Score®
"Excellent Transit"



PROPERTY SUMMARY

FOR LEASE



PROPERTY DETAILS

Address	710 SW Yamhill St, Portland, OR 97205
Available Space	<ul style="list-style-type: none"> • Ground Floor Former Pizza Restaurant Space: 3,367 RSF • Ground Floor Flagship Space: 6,069 RSF • Second Floor Space: 12,612 RSF • Total Combined: Up to 22,048 RSF
Lease Rate	Call for Details
Available	Now

Location Features

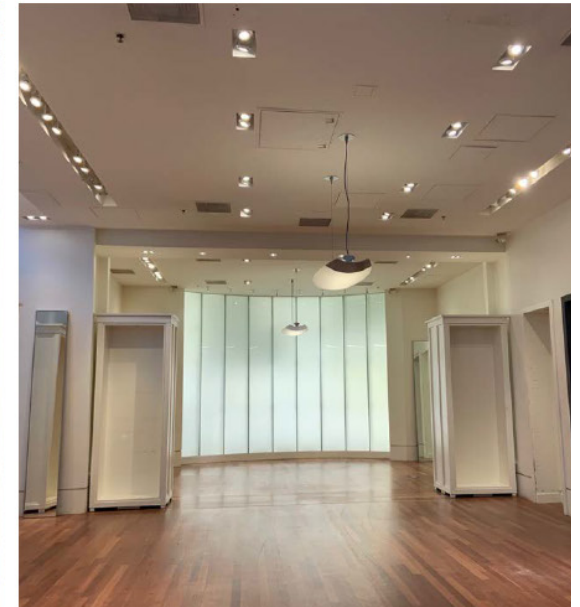
- Excellent corner location in Fox Tower in the heart of Downtown Portland
- Across from Nordstrom and adjacent to Umpqua Bank, Flying Elephants, Regal Fox Tower Stadium 10, and Director Park
- Other nearby tenants include Pastini, Mario's, Pendleton
- One block from Tri-Met MAX station at Pioneer Square

Nearby Highlights

- Afuri Ramen
- Apple
- Case Study Coffee
- Chase Bank
- Columbia Sportswear
- Departure
- Din Tai Fung
- Director Park
- Flying Elephants
- Fogo de Chão
- Golden Goose
- Gucci
- H&M
- Jake's Grill
- Kure Superfood Cafe
- Louis Vuitton
- Multnomah Whiskey Library
- Nordstrom
- Pastini
- Pioneer Courthouse Square
- Portland State University
- Regal Fox Tower
- Ruth's Chris Steak House
- Saint Laurent
- St. Honoré Baker
- Starbucks
- The Melting Pot
- Wells Fargo
- Zara



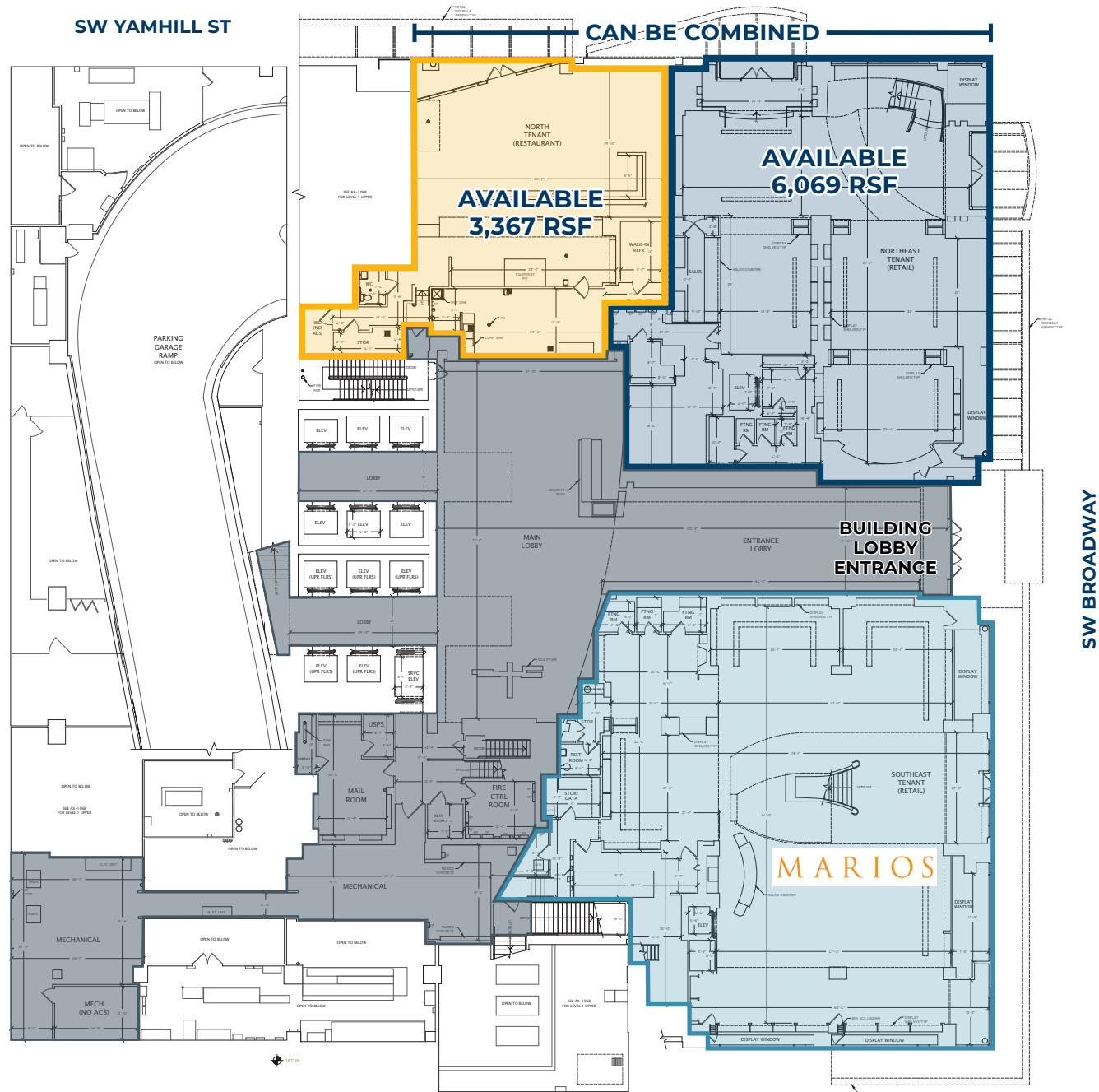
INTERIOR PHOTOS



GROUND LEVEL



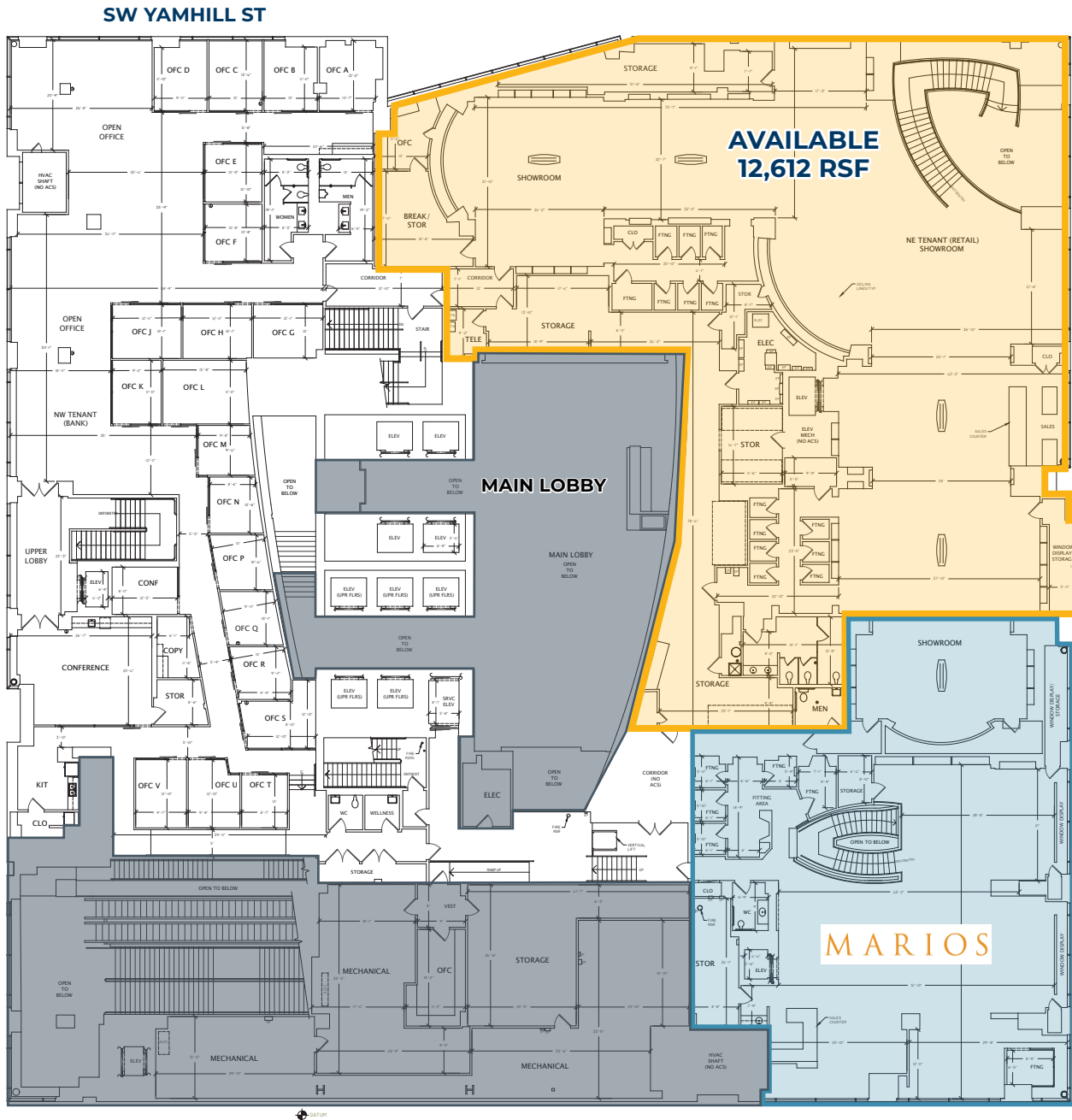
FLOOR PLAN



SECOND LEVEL

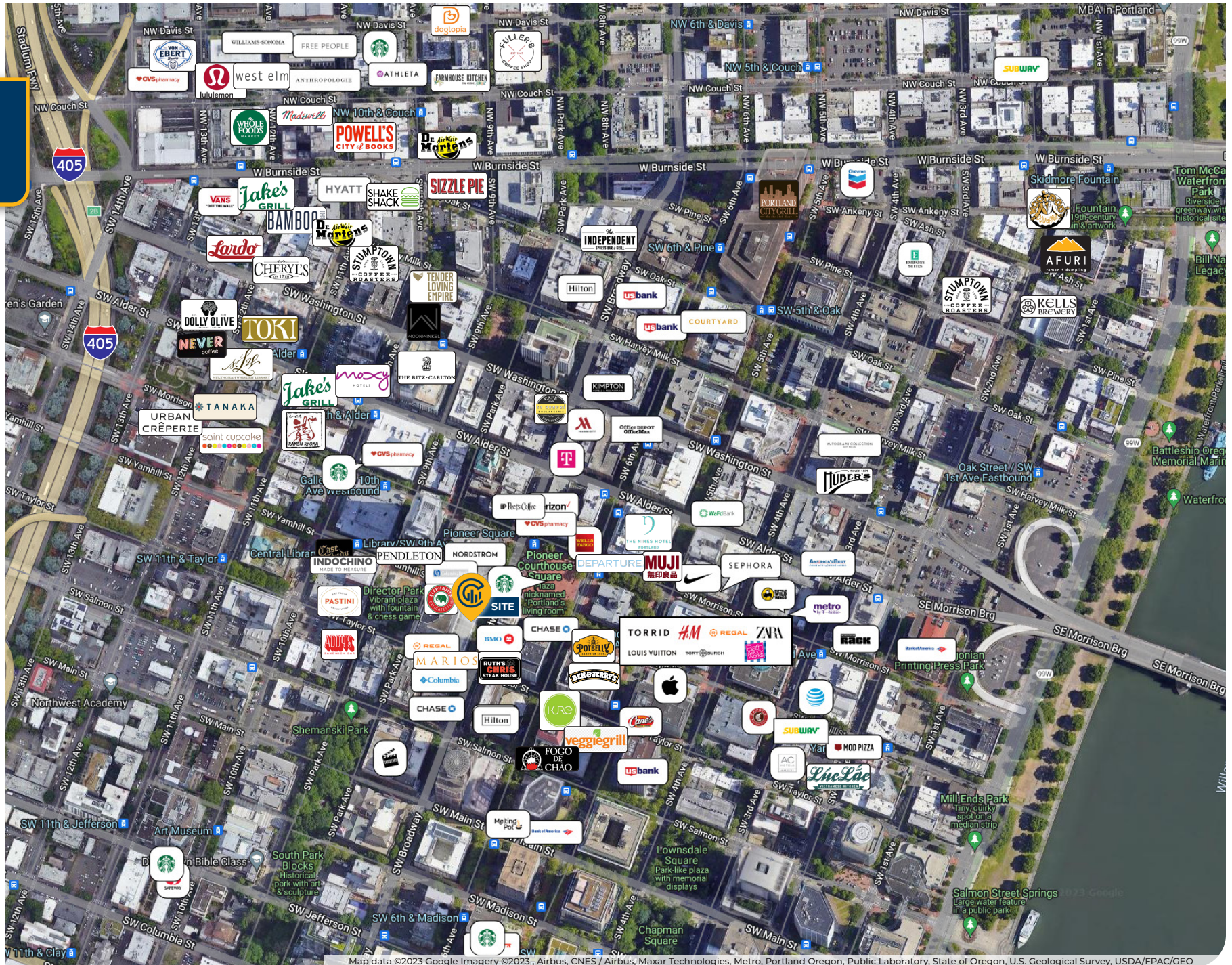


FLOOR PLAN



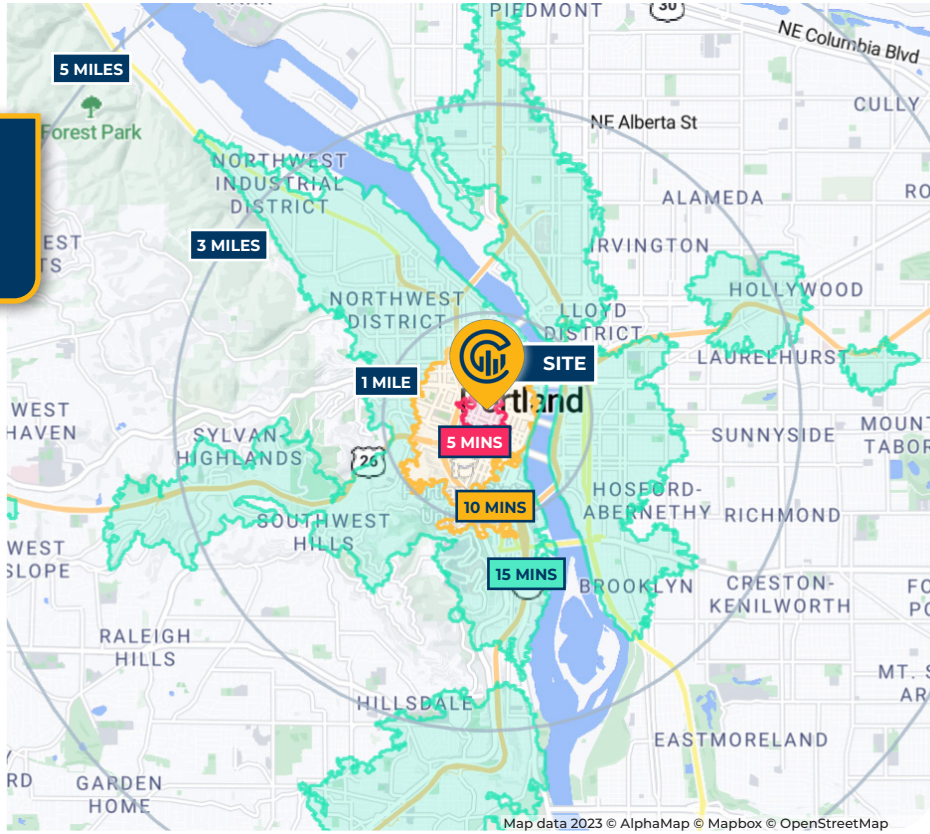


LOCAL AERIAL MAP





DRIVE TIMES & DEMOGRAPHICS



AREA DEMOGRAPHICS			
Population	1 mi area	3 mi area	5 mi area
2023 Estimated Population	41,160	182,083	435,287
2028 Projected Population	40,834	187,828	449,664
2020 Census Population	41,467	183,008	437,647
2010 Census Population	35,413	149,029	381,783
Projected Annual Growth 2023 to 2028	-0.2%	0.6%	0.7%
Historical Annual Growth 2010 to 2023	1.2%	1.7%	1.1%
Households & Income			
2023 Estimated Households	27,008	97,065	205,957
2023 Est. Average HH Income	\$105,120	\$140,694	\$146,374
2023 Est. Median HH Income	\$74,525	\$101,299	\$106,634
2023 Est. Per Capita Income	\$70,142	\$75,496	\$69,618
Businesses			
2023 Est. Total Businesses	8,838	22,679	37,758
2023 Est. Total Employees	102,381	216,275	310,879

Demographic Information, Traffic Counts, and Merchant Locations are Provided by REGIS Online at SitesUSA.com ©2023, Sites USA, Chandler, Arizona, 480-491-1112 Demographic Source: Applied Geographic Solutions 4/2023, TIGER Geography - RSI

NICK KASSAB
 Senior Vice President
 503-880-8400
 nick.kassab@capacitycommercial.com

FOX TOWER RETAIL