



Industrial Commercial Space

1400 Maple St, Pottstown, PA 19464



Matthew Feldman

Fenix Property Management

1200 E High St, Suite 202, Pottstown, PA 19464

matt@fenixpg.com

(610) 600-1106



Industrial Commercial Space

\$17.70 /SF/YR

Newly renovated, spectacular office & flex space available for multiple uses! 1400 Maple Street provides over 2,100 square feet of private space, off-street parking and a garage/loading dock area for storage or deliveries.

Entering through the foyer, you will find a large conference room/flex area that totals 700+ square feet. At the end of the hallway, there is another large room/flex area totaling 842 square feet. Off of this space, you will find two private offices to the left, and a modern roll-up glass garage door with truck height loading dock making deliveries and storage a breeze.

Restroom is located in a shared common area with building's other occupant. Access to building's main conference area also available on a per use basis. Potential build/fit out available for long term tenants....

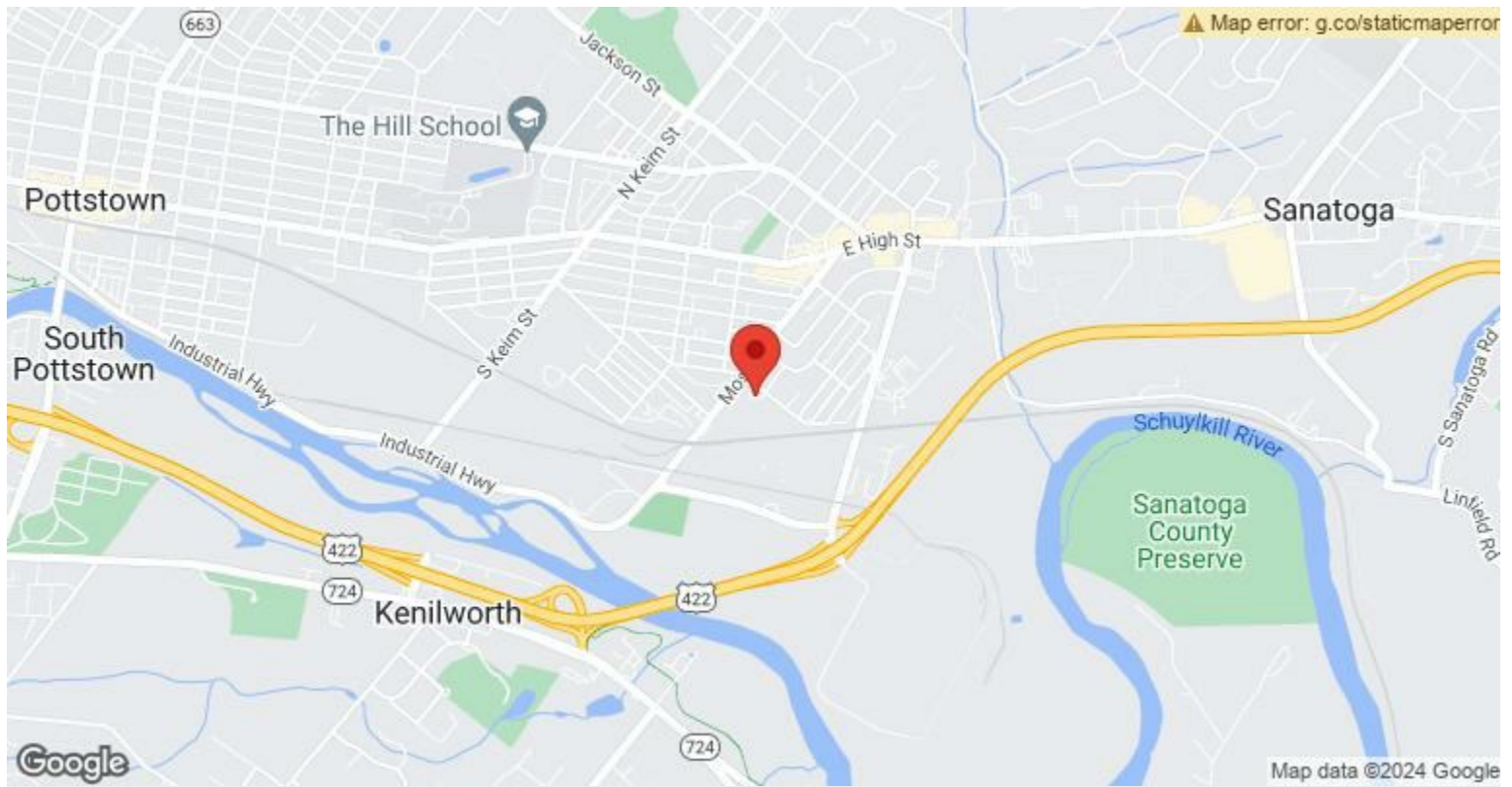


Rental Rate:	\$17.70 /SF/YR
Property Type:	Industrial
Rentable Building Area:	12,000 SF
Year Built:	1930
Rental Rate Mo:	\$1.48 /SF/MO

1st Floor

Space Available	2,000 SF
Rental Rate	\$17.70 /SF/YR
Date Available	Now
Service Type	Net
Space Type	Relet
Space Use	Industrial
Lease Term	Negotiable

Newly renovated, spectacular office & flex space available for multiple uses! 1400 Maple Street provides over 2,100 square feet of private space, off-street parking and a garage/loading dock area for storage or deliveries. Entering through the foyer, you will find a large conference room/flex area that totals 700+ square feet. At the end of the hallway, there is another large room/flex area totaling 842 square feet. Off of this space, you will find two private offices to the left, and a modern roll-up glass garage door with truck height loading dock making deliveries and storage a breeze. Restroom is located in a shared common area with building's other occupant. Access to building's main conference area also available on a per use basis. Potential build/fit out available for long term tenants.



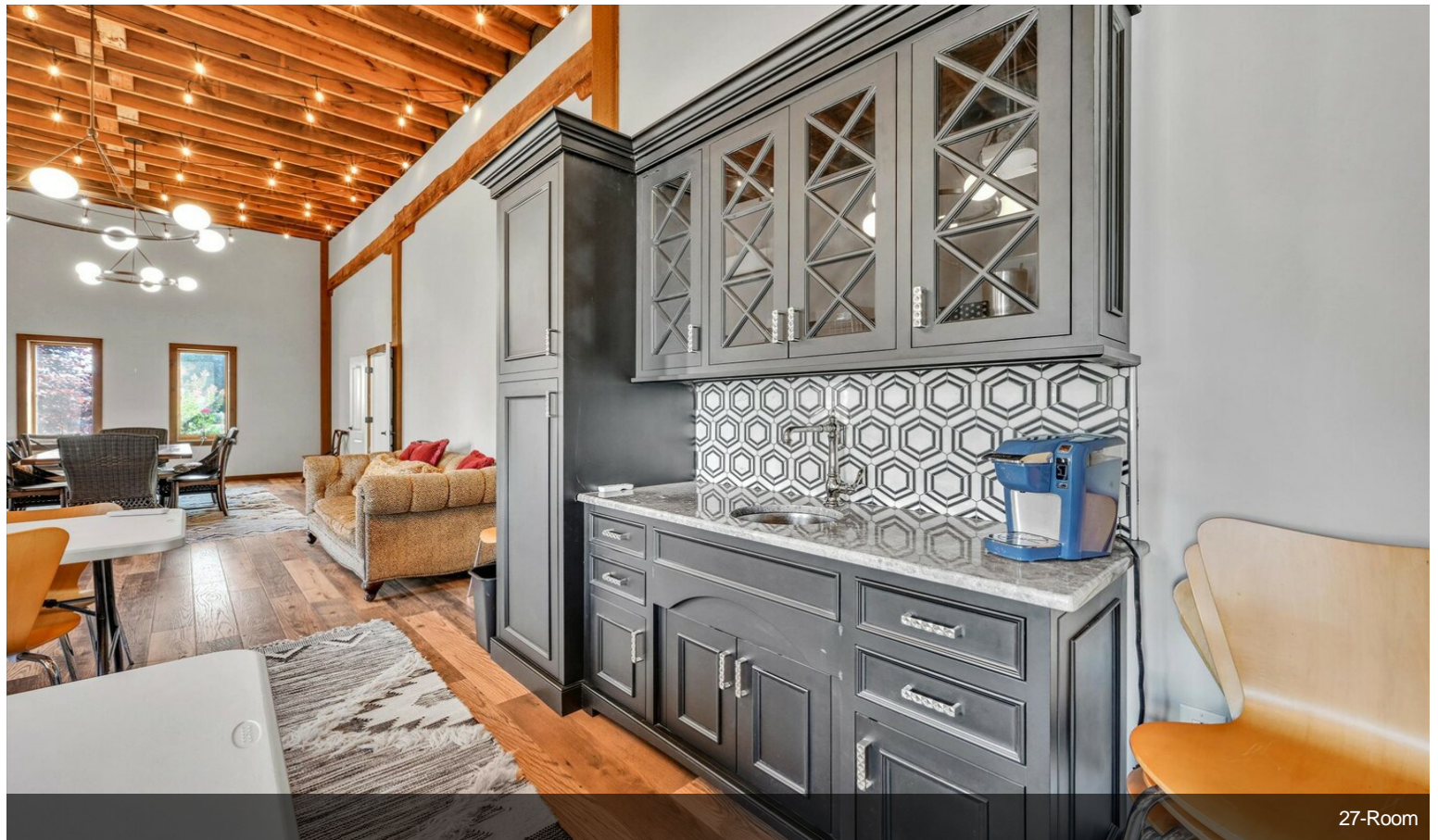
1400 Maple St, Pottstown, PA 19464

Newly renovated, spectacular office & flex space available for multiple uses! 1400 Maple Street provides over 2,100 square feet of private space, off-street parking and a garage/loading dock area for storage or deliveries.

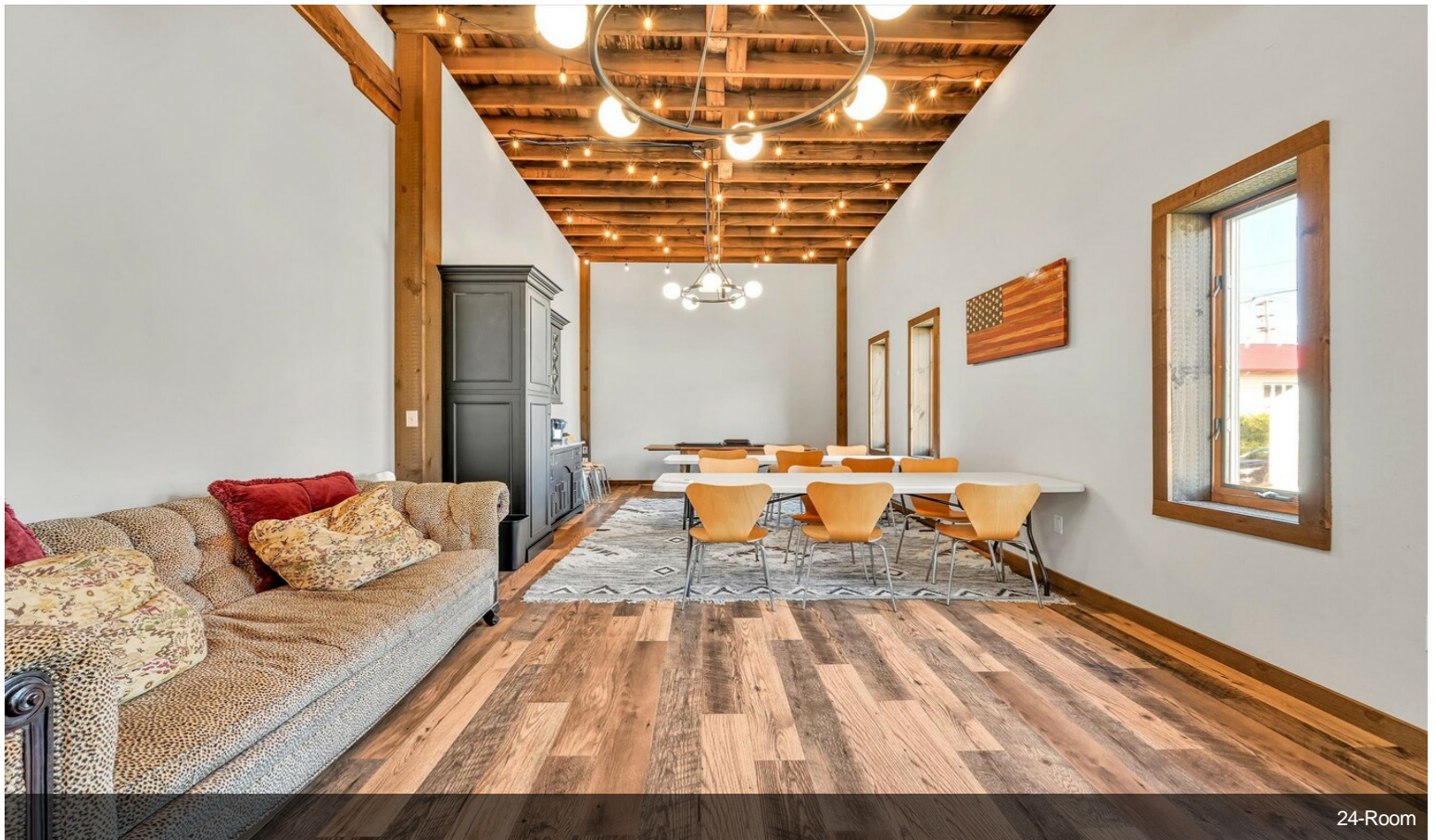
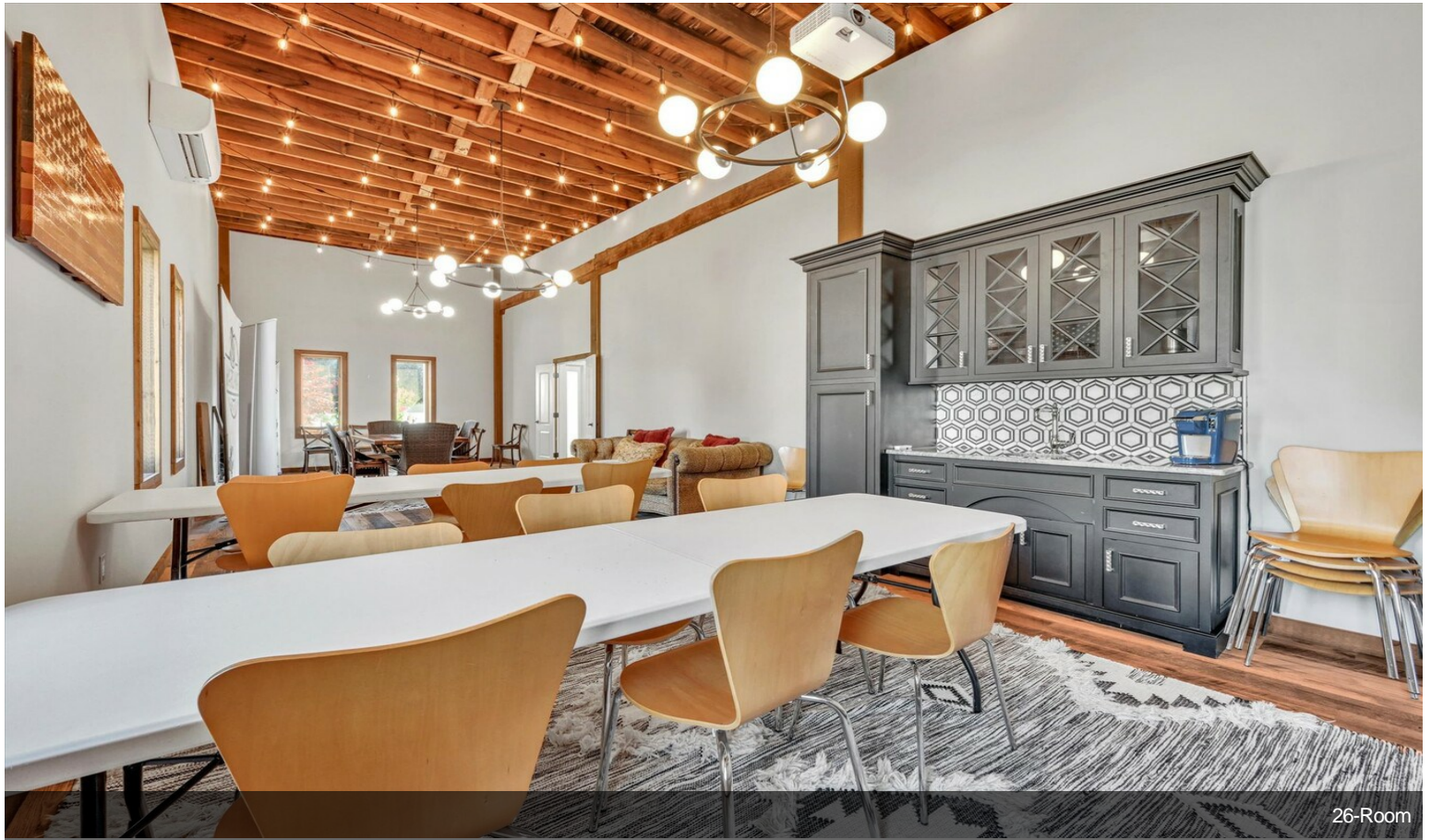
Entering through the foyer, you will find a large conference room/flex area that totals 700+ square feet. At the end of the hallway, there is another large room/flex area totaling 842 square feet. Off of this space, you will find two private offices to the left, and a modern roll-up glass garage door with truck height loading dock making deliveries and storage a breeze.

Restroom is located in a shared common area with building's other occupant. Access to building's main conference area also available on a per use basis. Potential build/fit out available for long term tenants.

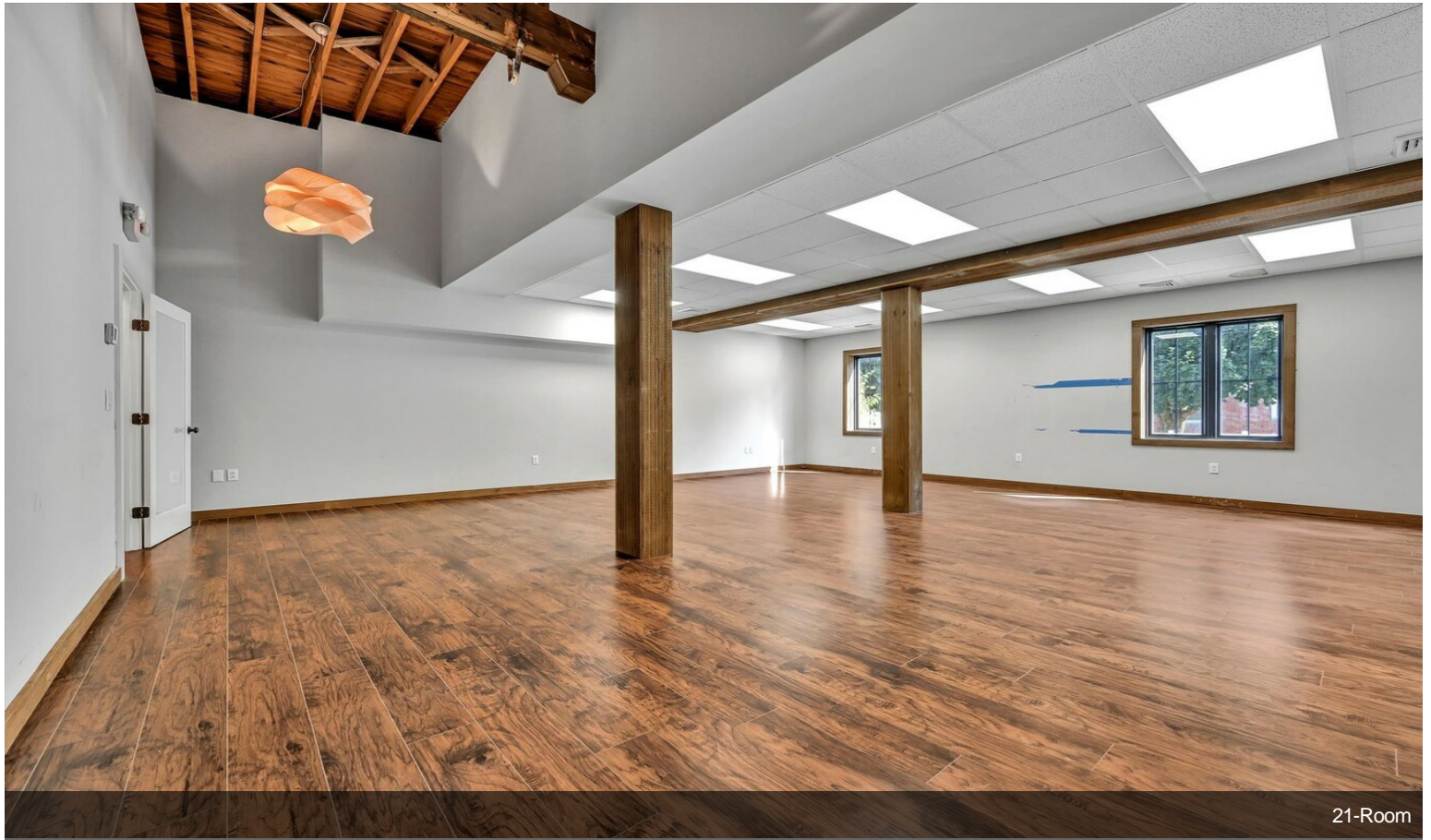
Property Photos



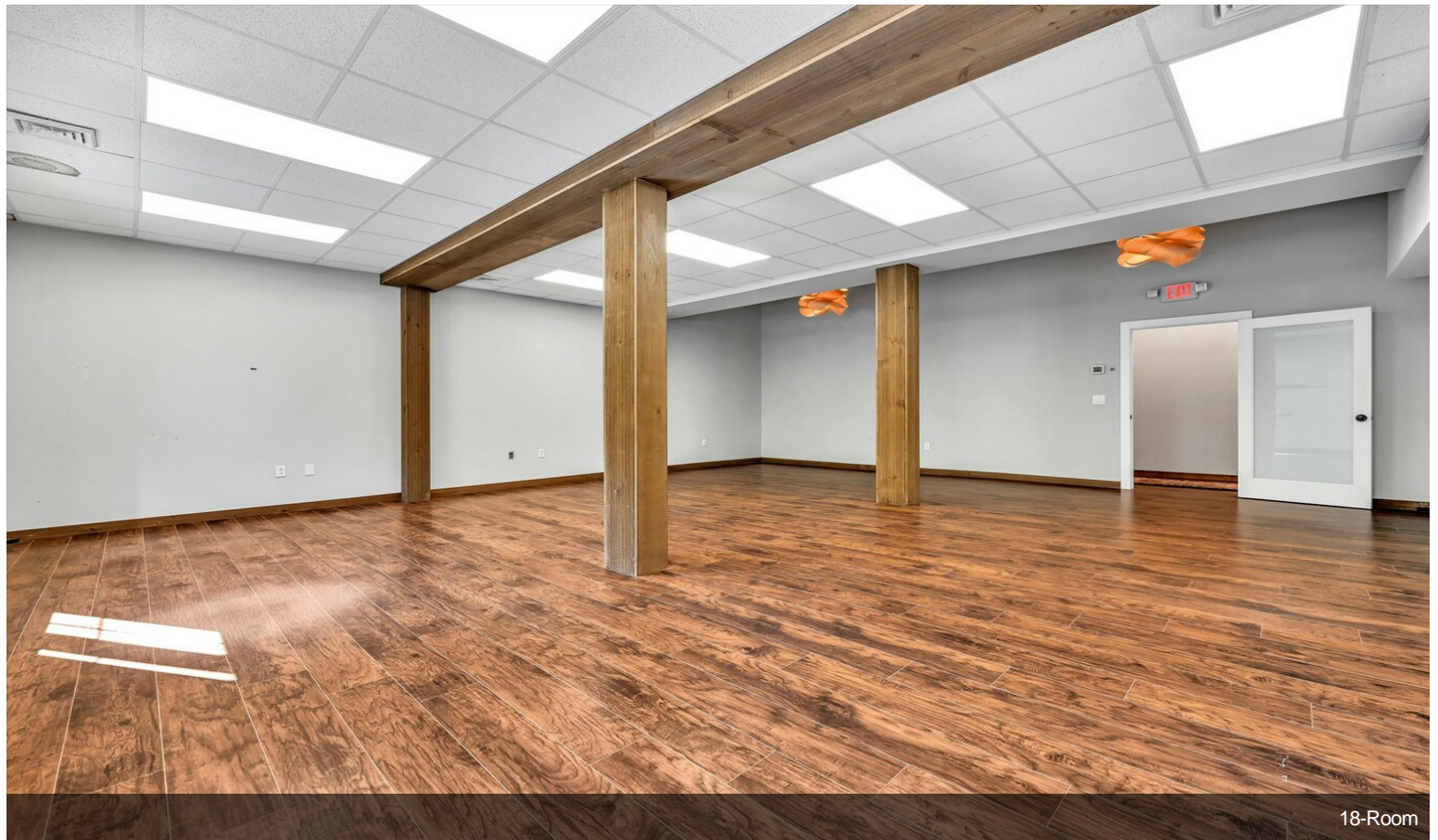
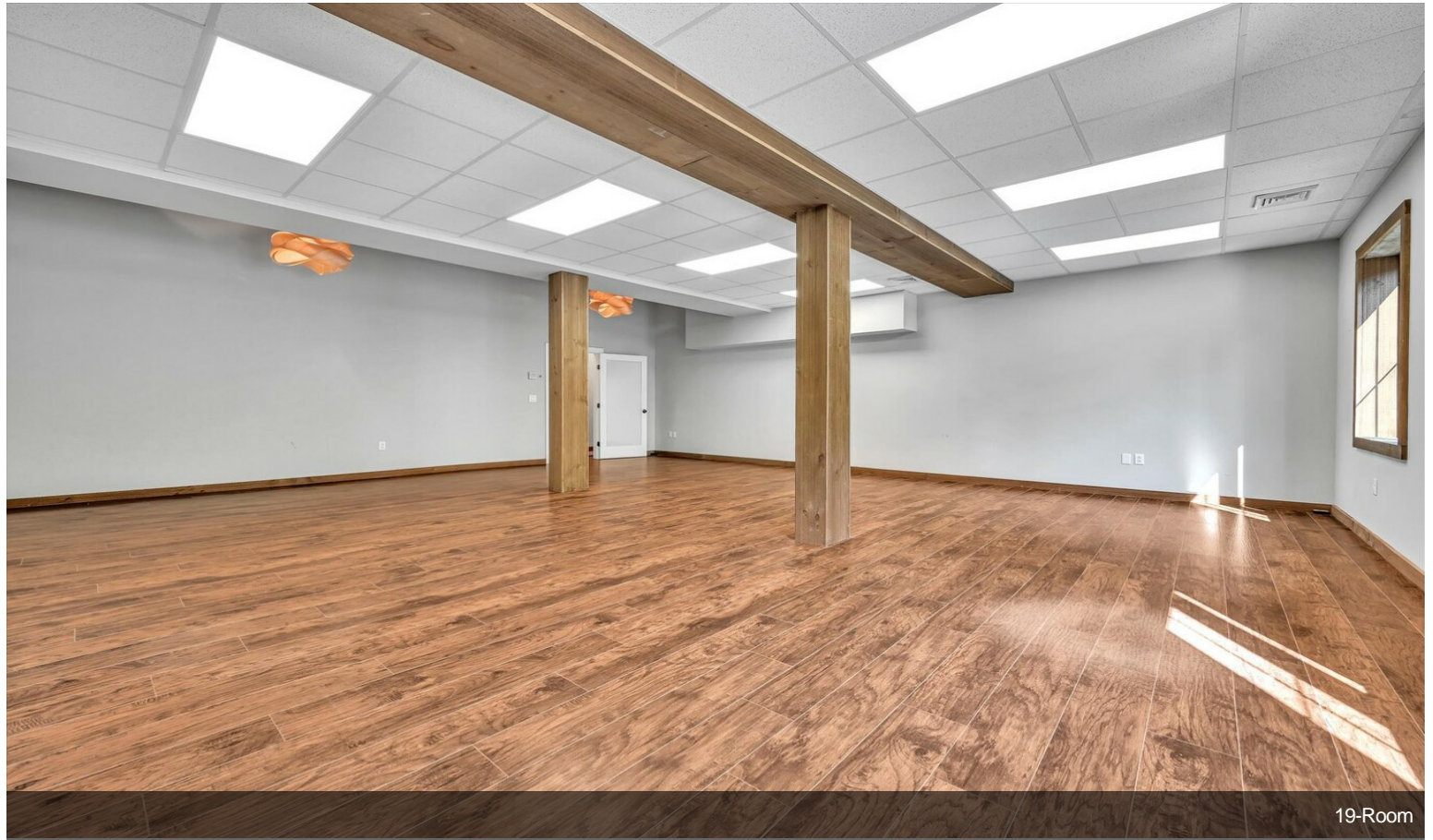
Property Photos



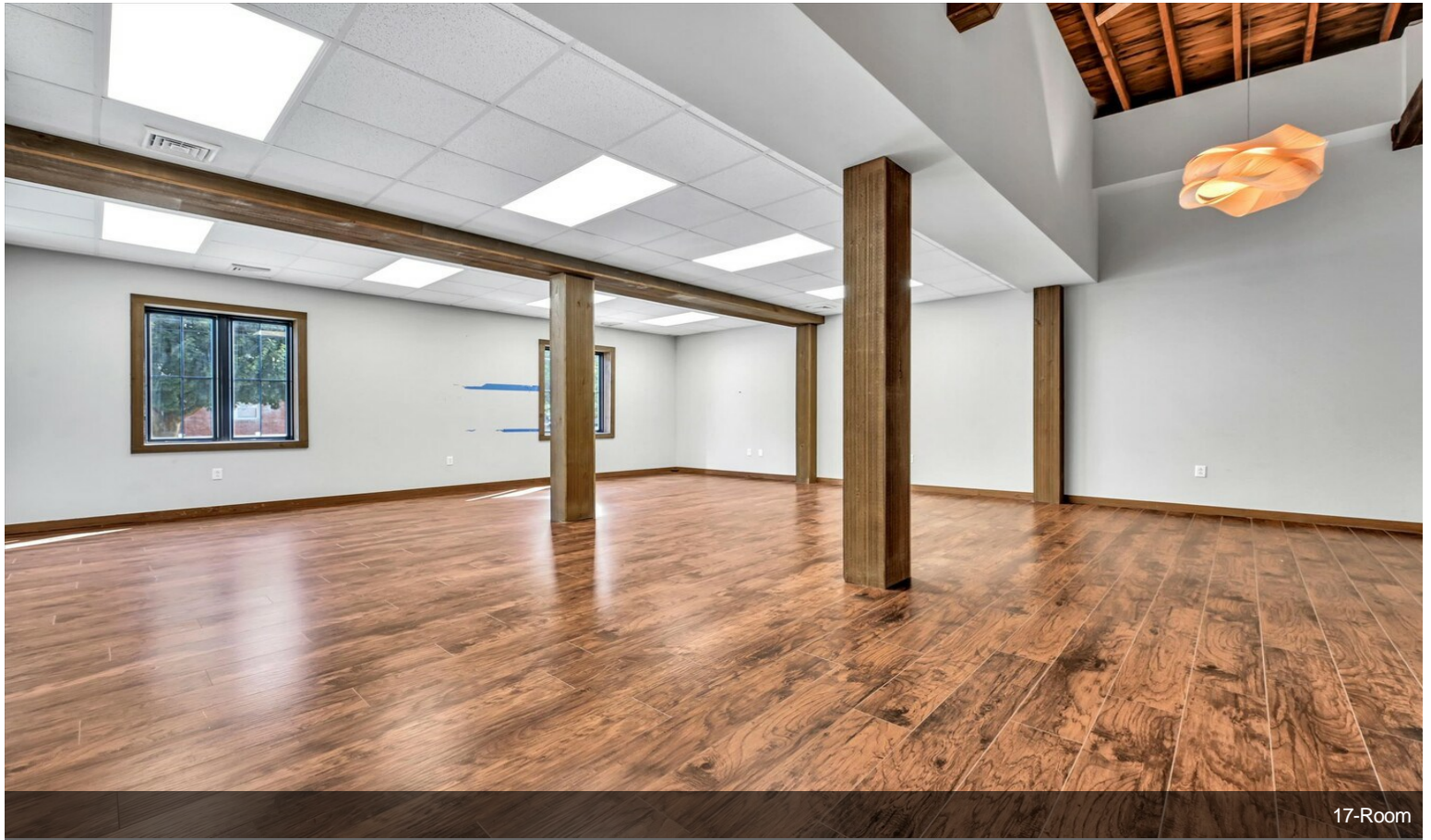
Property Photos



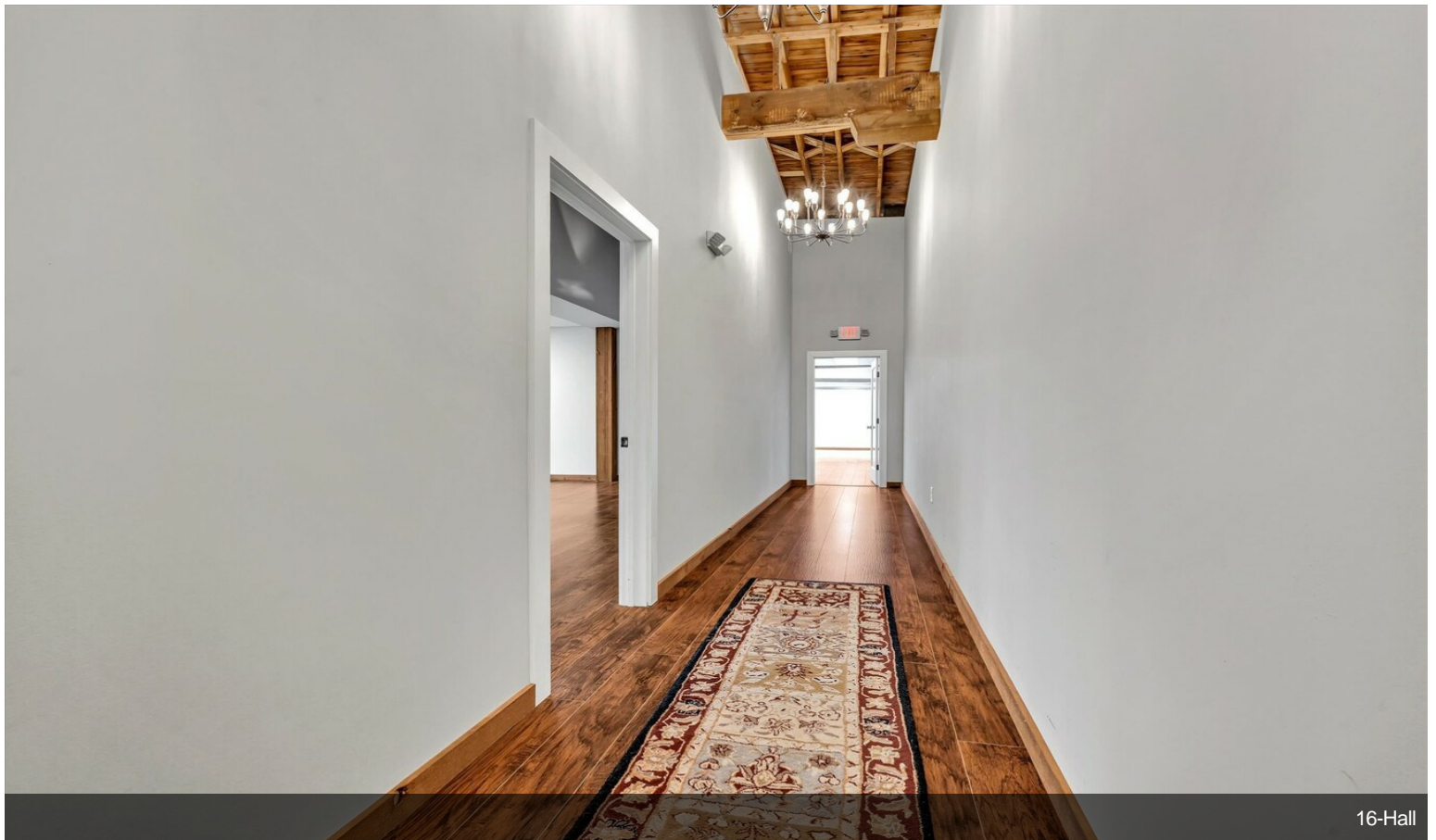
Property Photos



Property Photos

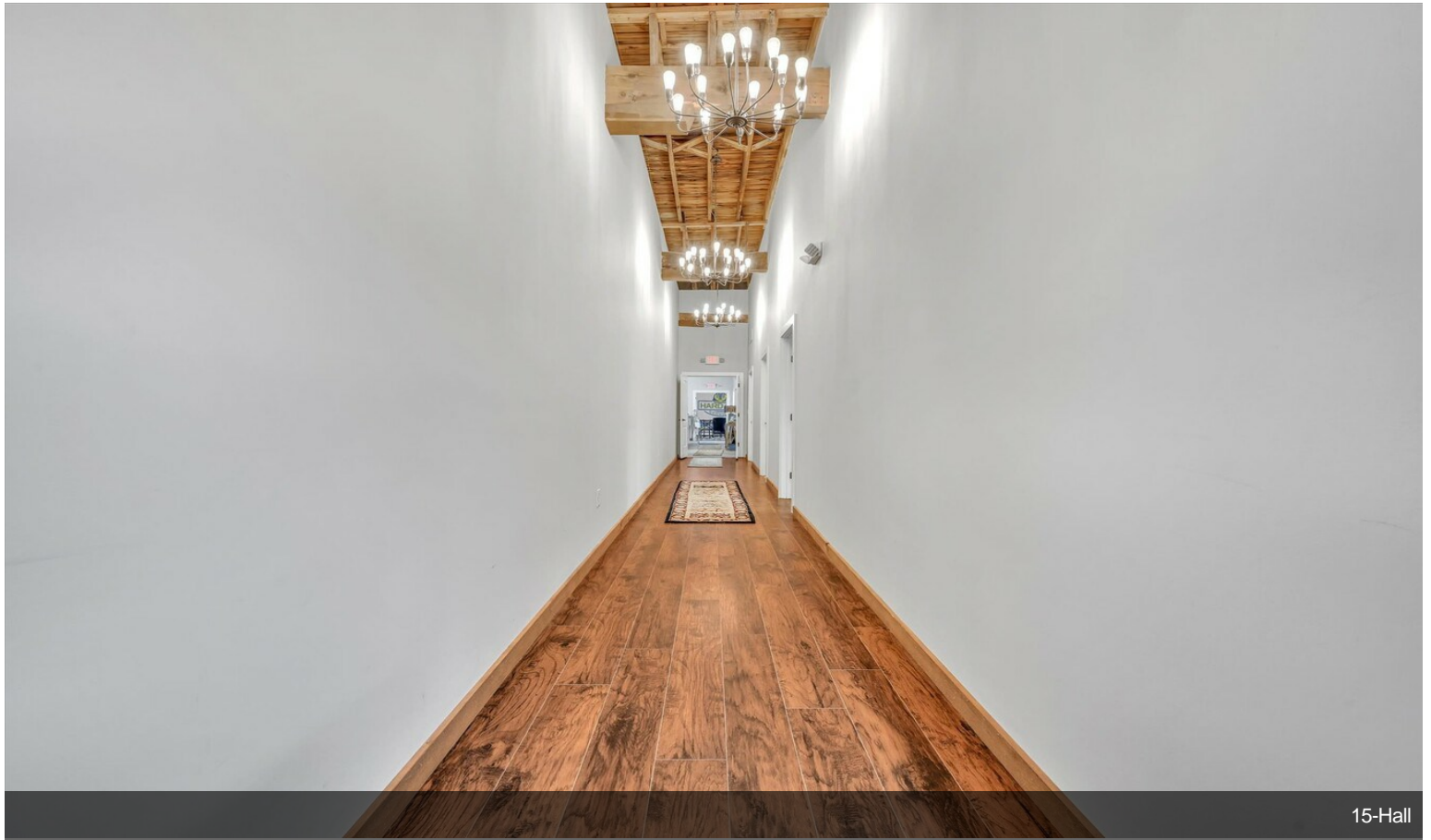


17-Room

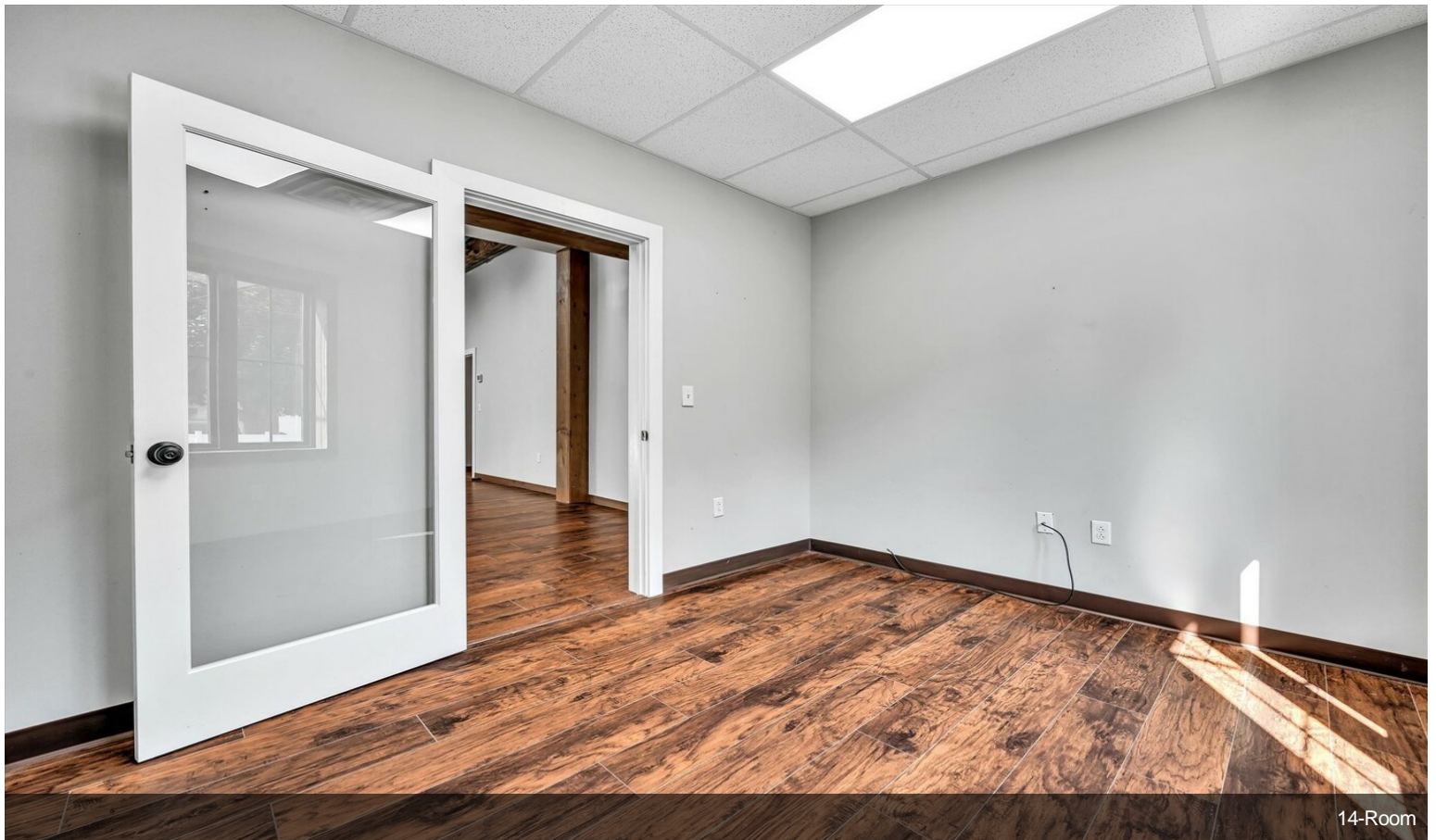


16-Hall

Property Photos

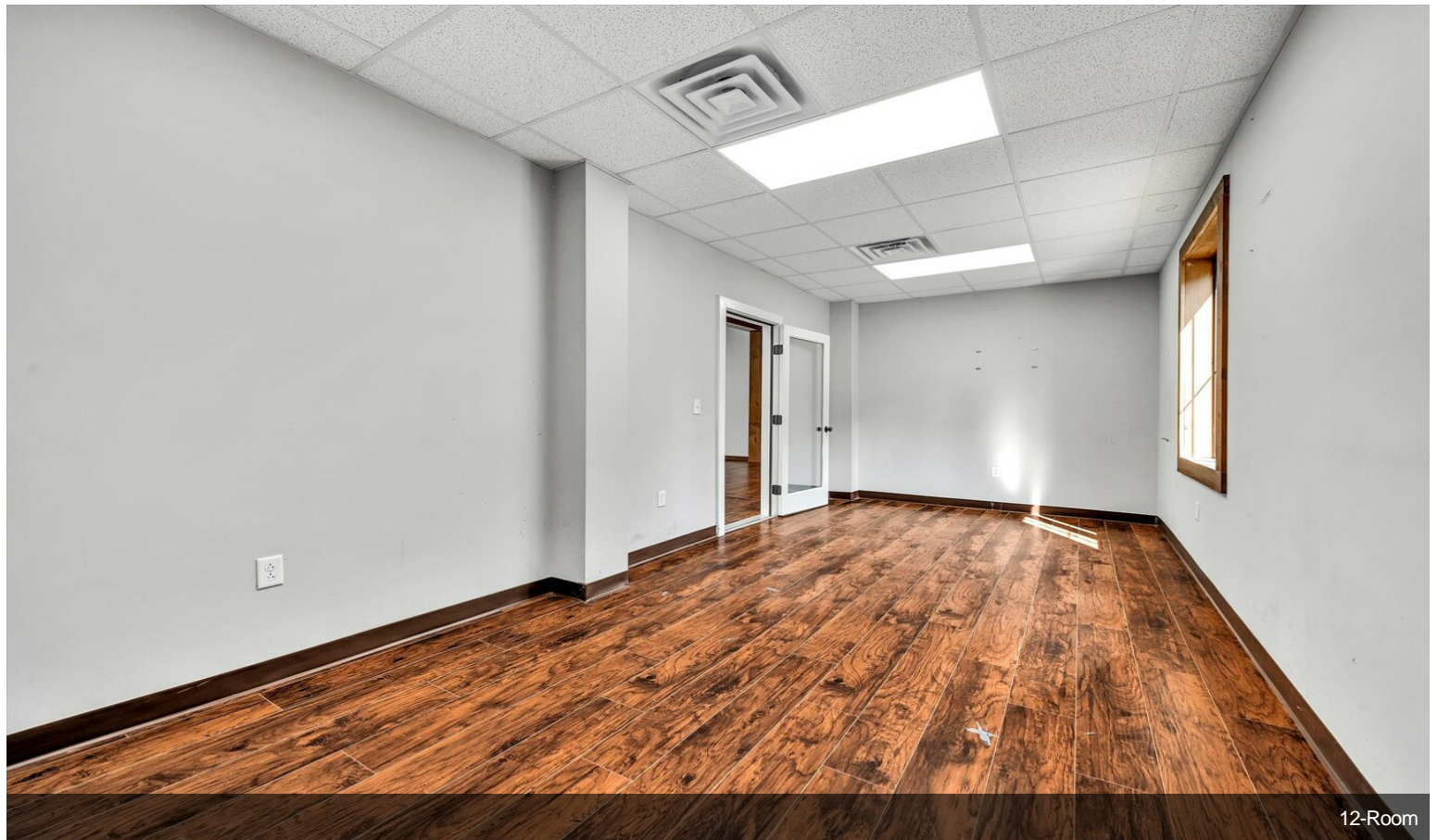
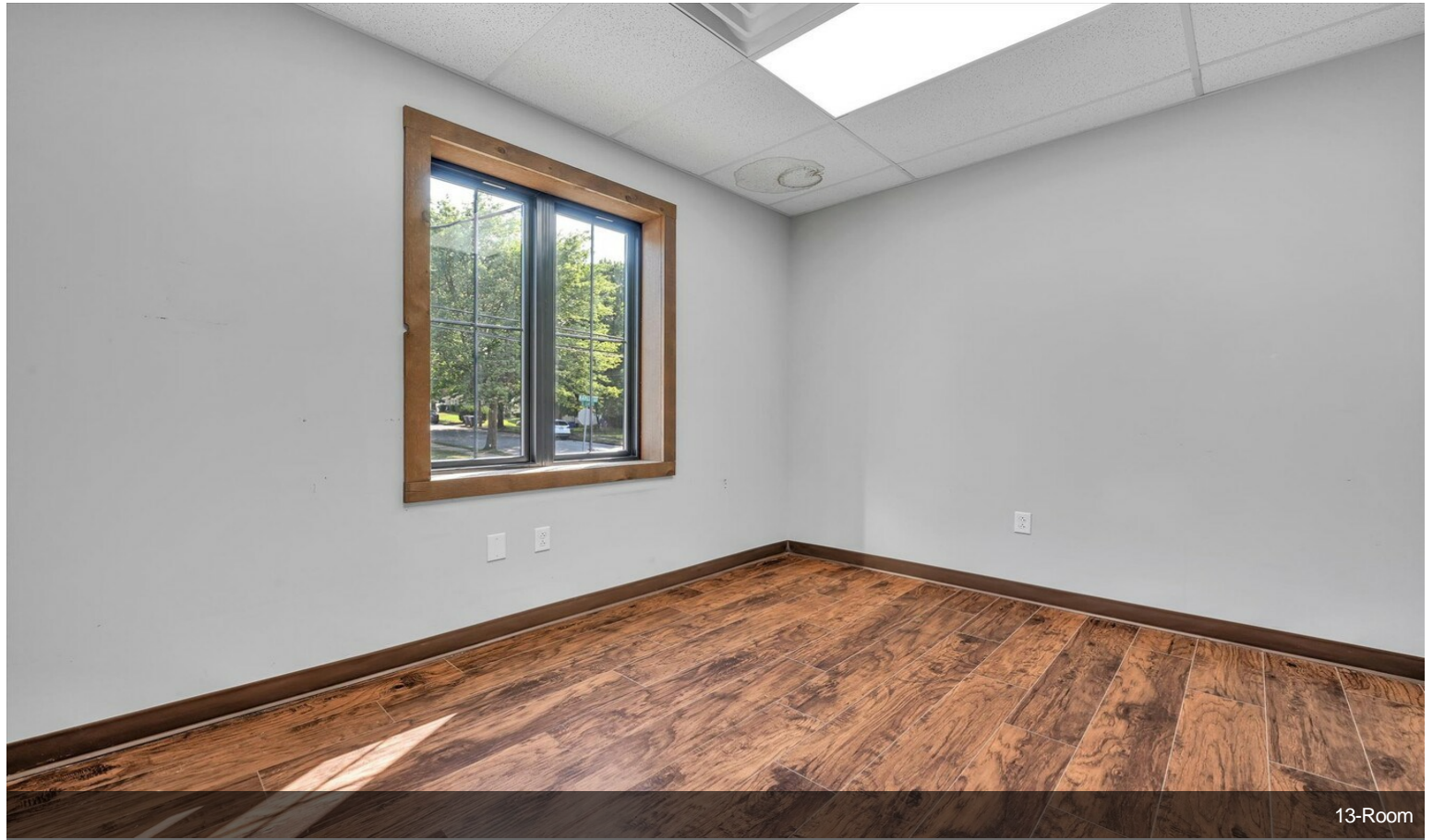


15-Hall

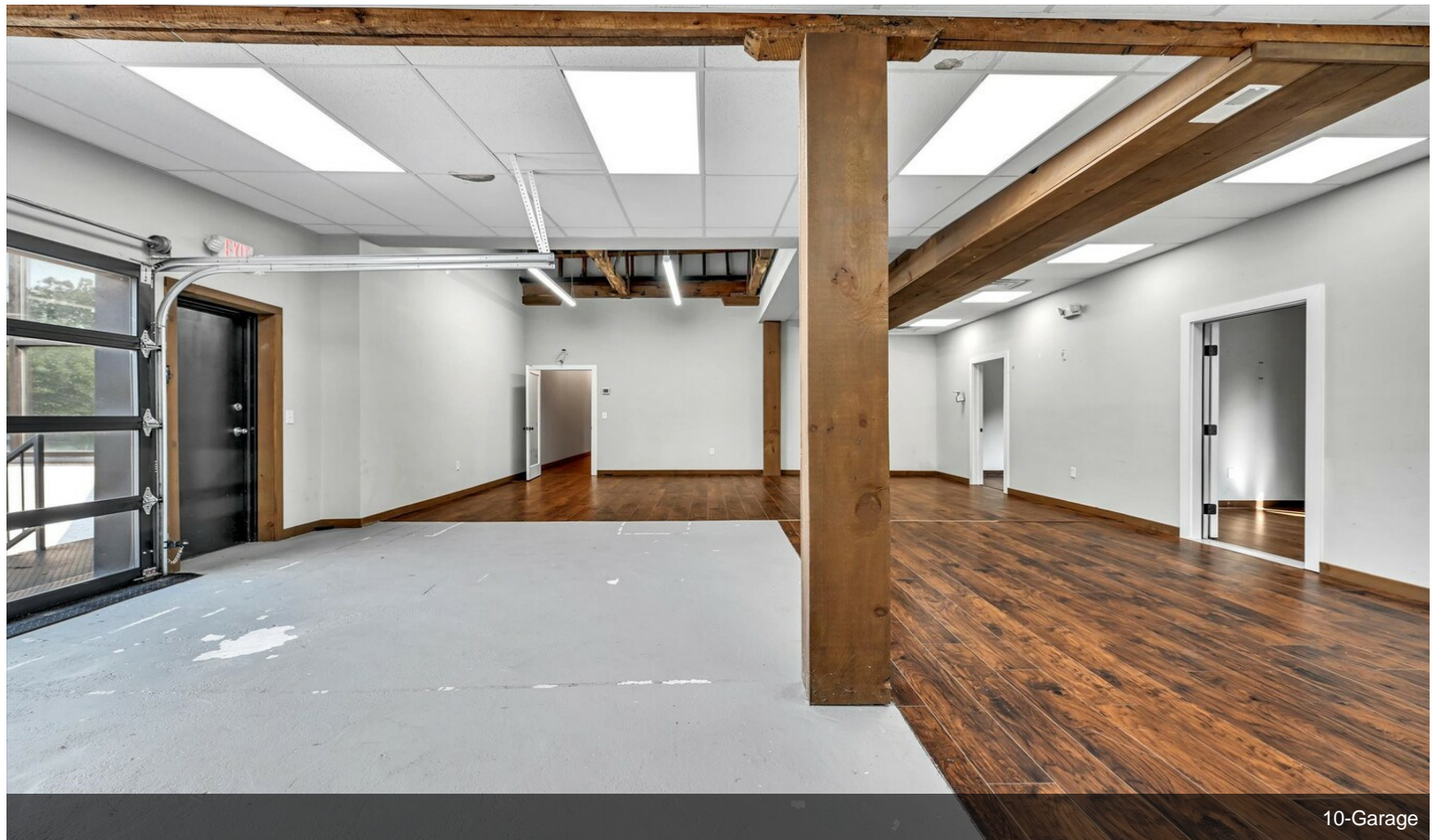
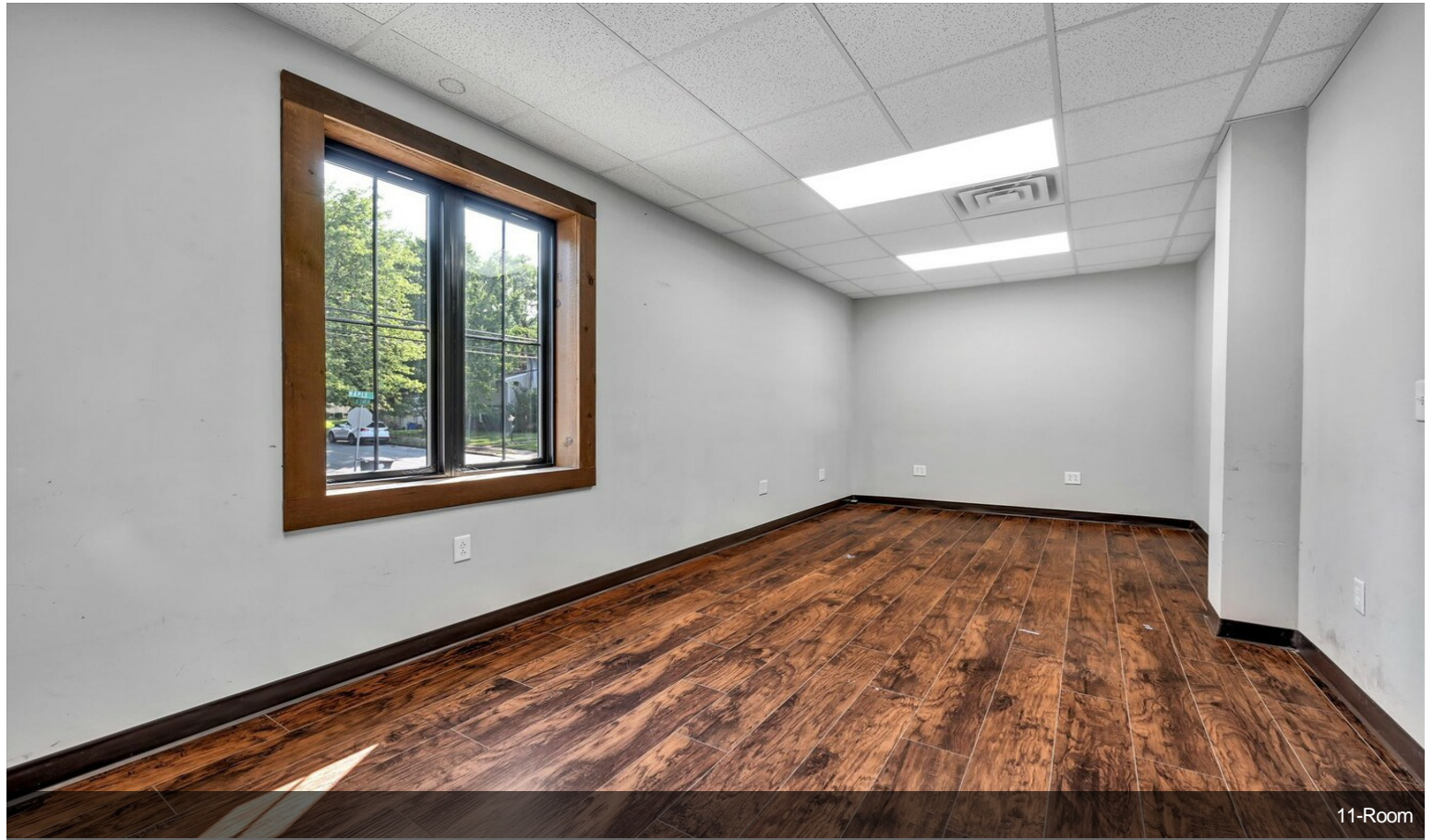


14-Room

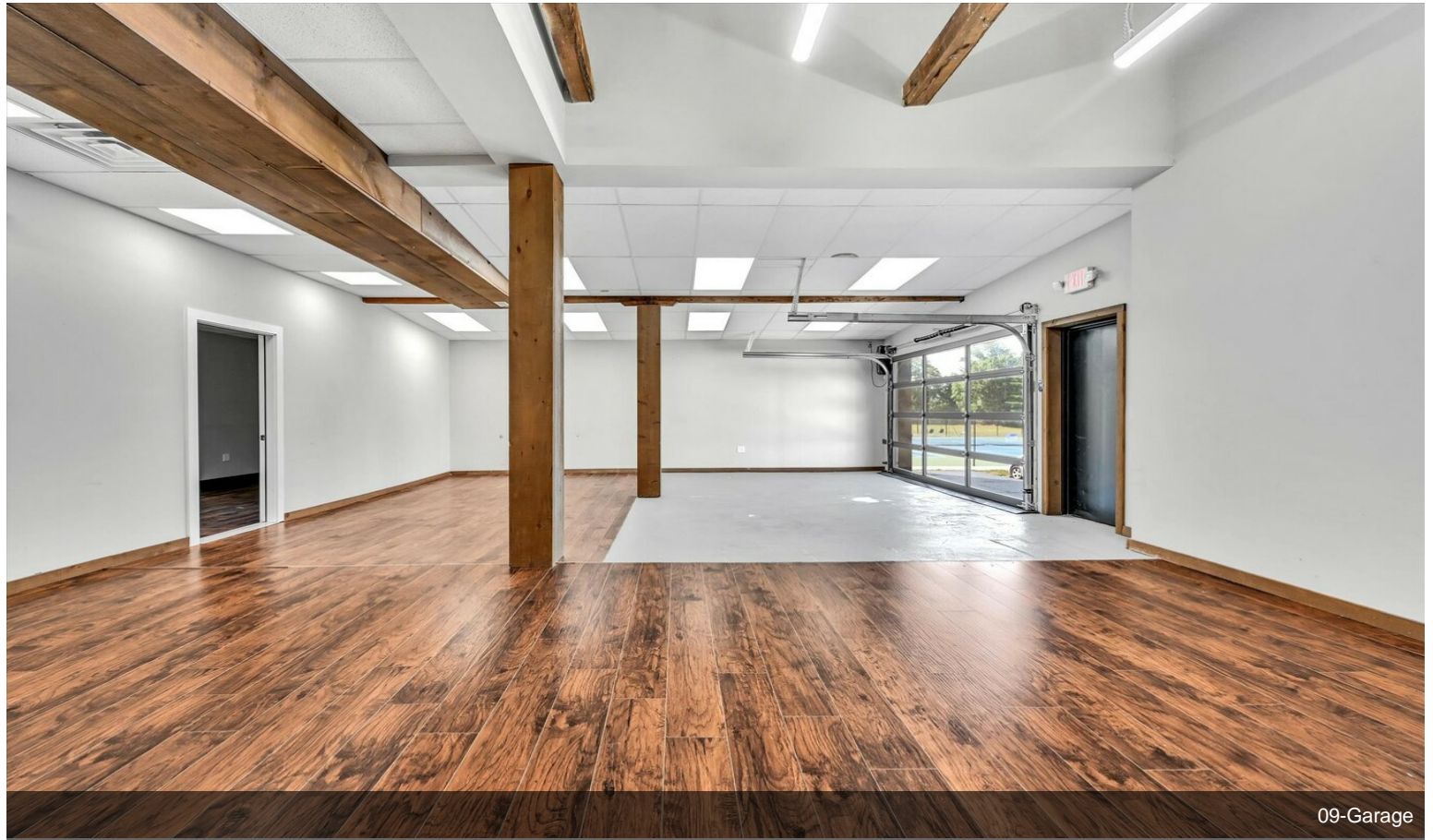
Property Photos



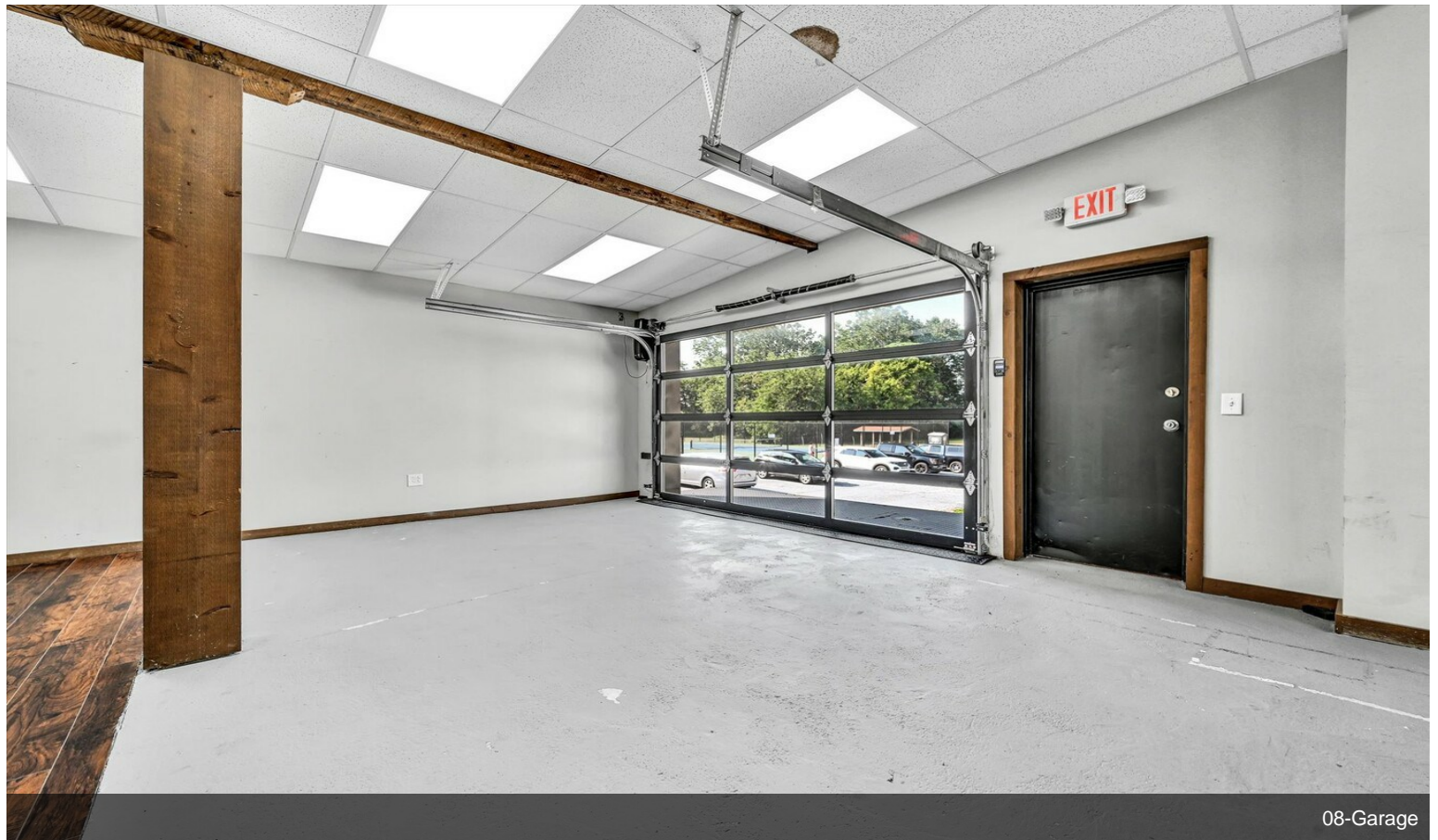
Property Photos



Property Photos

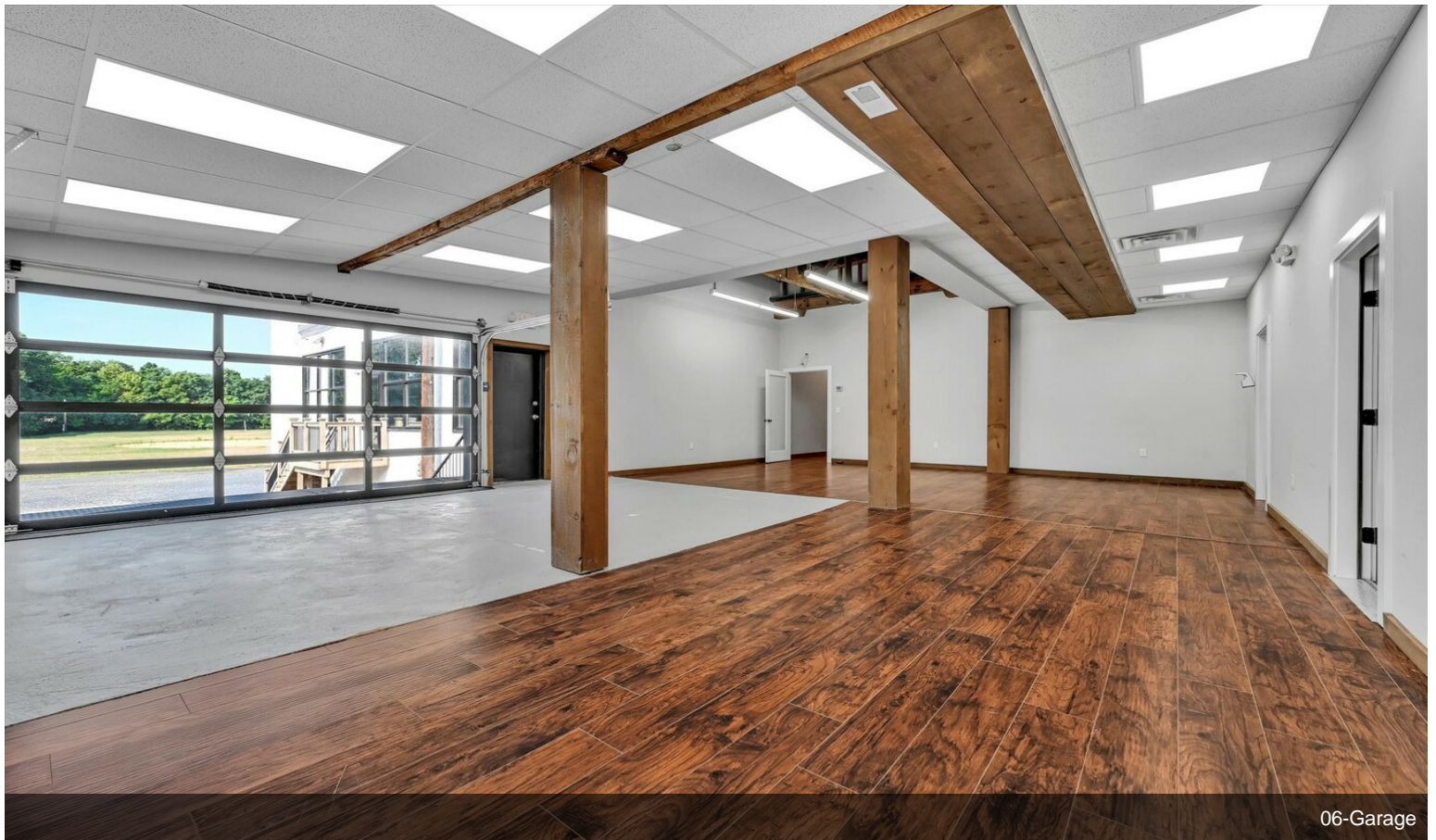


09-Garage

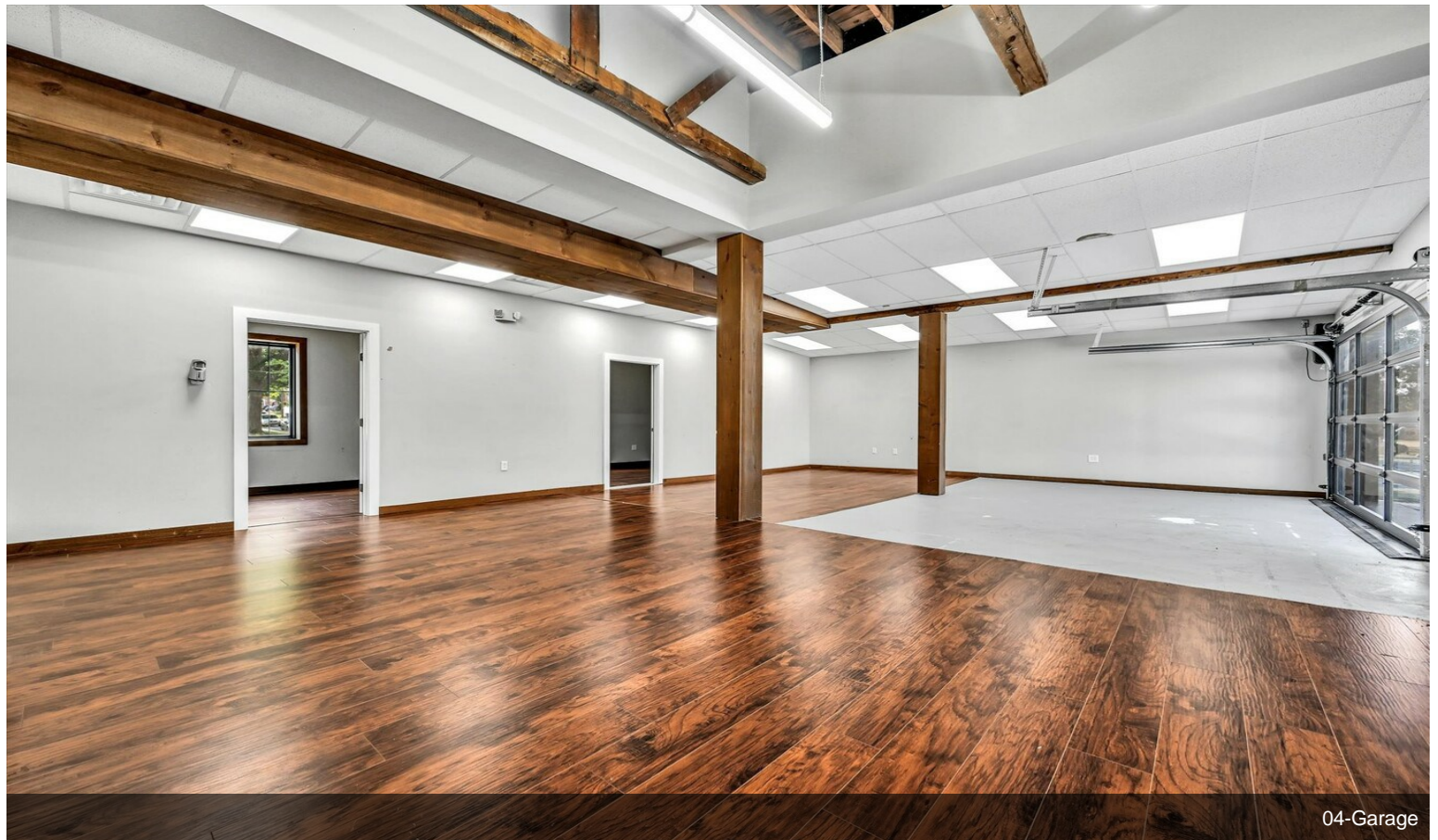
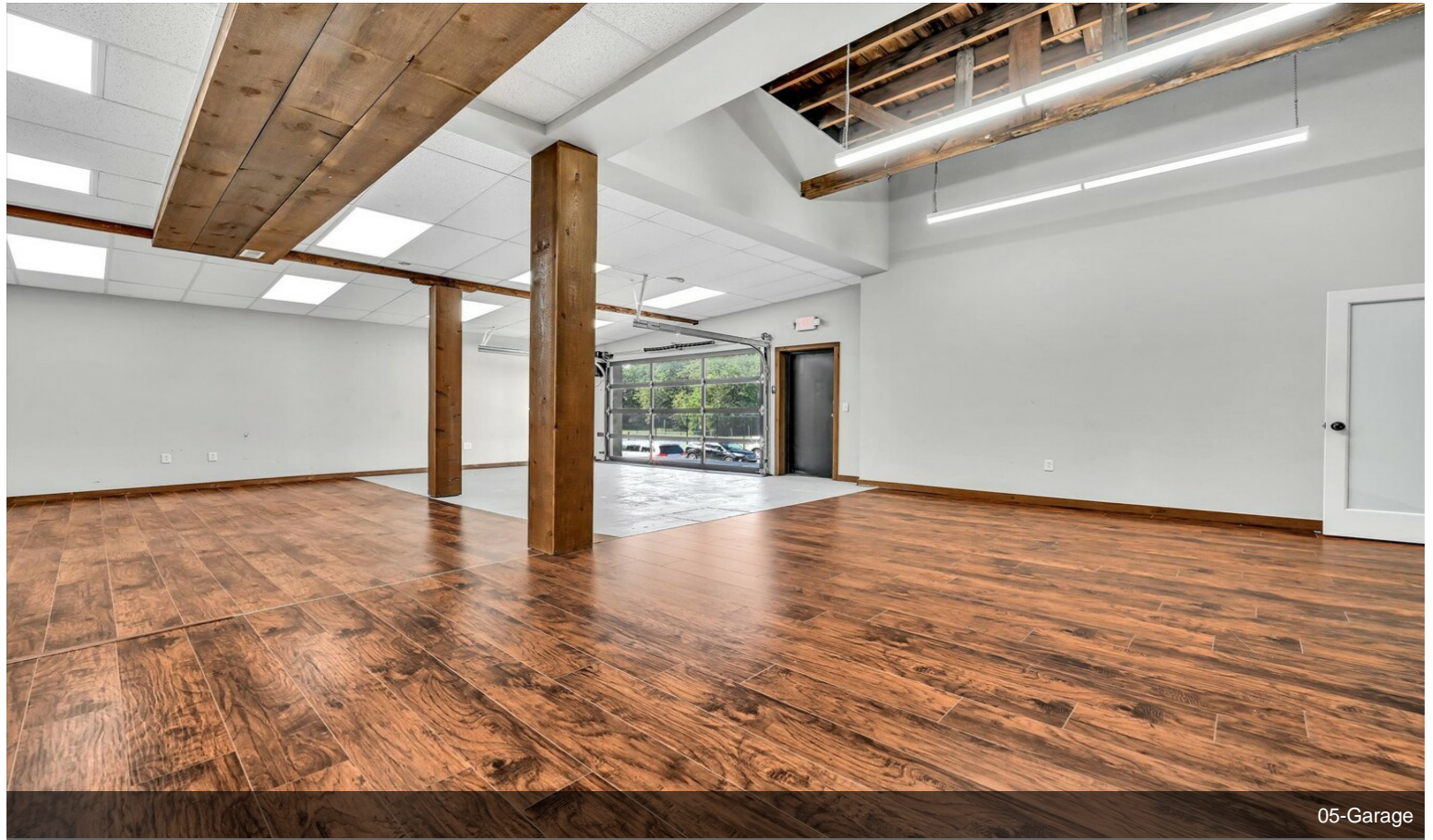


08-Garage

Property Photos



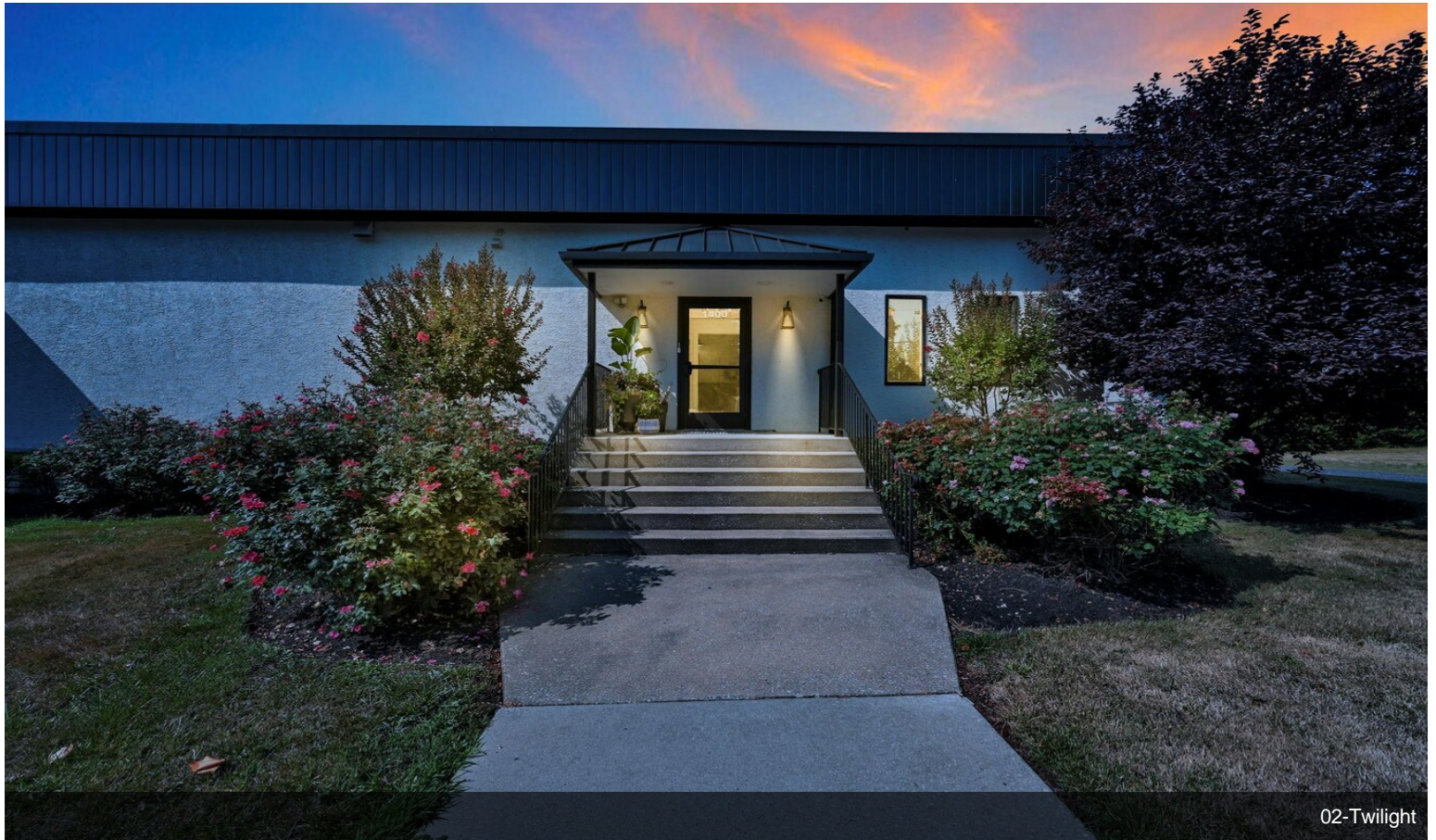
Property Photos



Property Photos



03-Front

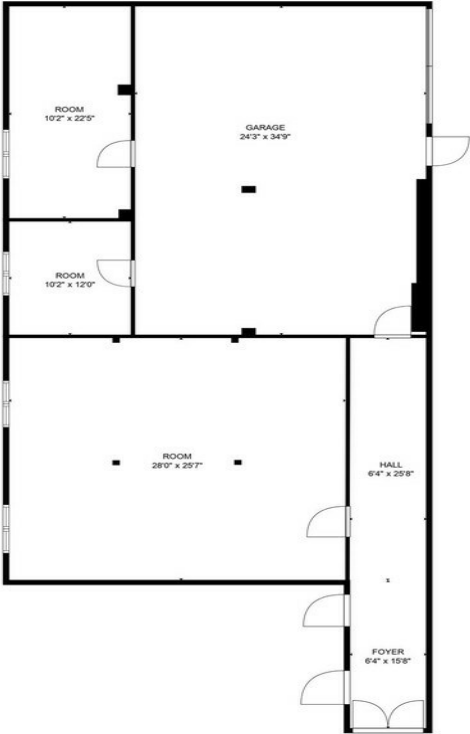


02-Twilight

Property Photos



01-Front



TOTAL: 1343 sq. ft
FLOOR 1: 1343 sq. ft
EXCLUDED AREAS: GARAGE: 842 sq. ft

MEASUREMENTS ARE DEEMED RELIABLE BUT ARE NOT GUARANTEED.

01-Floor Plan