

FOR
LEASE

ANDREWS AVENUE WAREHOUSE

INDUSTRIAL PROPERTY FOR LEASE

230-240 S ANDREWS AVENUE, POMPAÑO BEACH, FL 33069



CURRENT CAPITAL
Real Estate Group



LIGHT INDUSTRIAL USES - CARPENTRY | E-COMMERCE | STORAGE
FLEX SPACE

PROPERTY HIGHLIGHTS

- NEWLY DESIGNED ATTRACTIVE BUILDINGS
- Storage Warehouse to Accommodate Product Handling
- LED Lighting, Renovated Restrooms & more
- Air Conditioned Units Available Upon Request
- Lot Size is 85,611 Square Feet
- 10' High Bay Doors
- 13' Ceiling Height
- Liberal I-I Z

4000 Hollywood Boulevard, 765-S
Hollywood FL 33021
O: 954.966.8181
CURRENTCAPITALGROUP.COM

For Leasing or Sales Information Or An On-Site Tour Please Contact

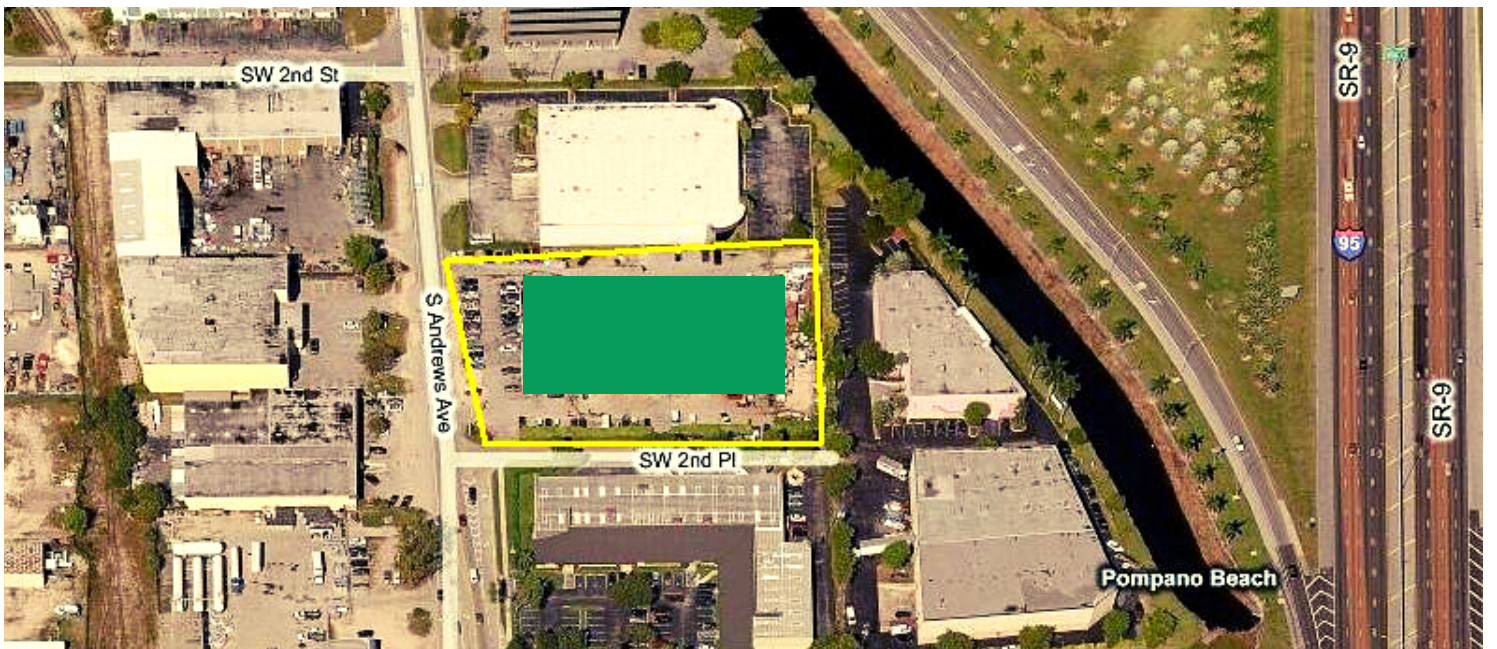
954.966.8181

ANDREWS AVENUE WAREHOUSE

ANDREWS AVENUE WAREHOUSE

230-240 S ANDREWS AVE, POMPANO BEACH, FL 33069

RETAIL MAP



ANDREWS
AVENUE
WAREHOUSE



DEMOGRAPHICS



1 Mile 3 Miles 5 Miles

Total population	12,755	108,690	302,166
Population American Indian	9	144	363
Population Asian	121	1,610	5,084
Population Black	4,553	26,371	69,009
Population White	6,367	73,217	209,504
Persons per Household	2.7	2.4	2.4
Total households	4,778	45,177	127,719
Average HH income	\$41,757	\$58,949	\$64,078

TOTAL POPULATION
Pompano Beach, FL



111,954

TRAFFIC COUNT
S Andrews & SW 3rd St

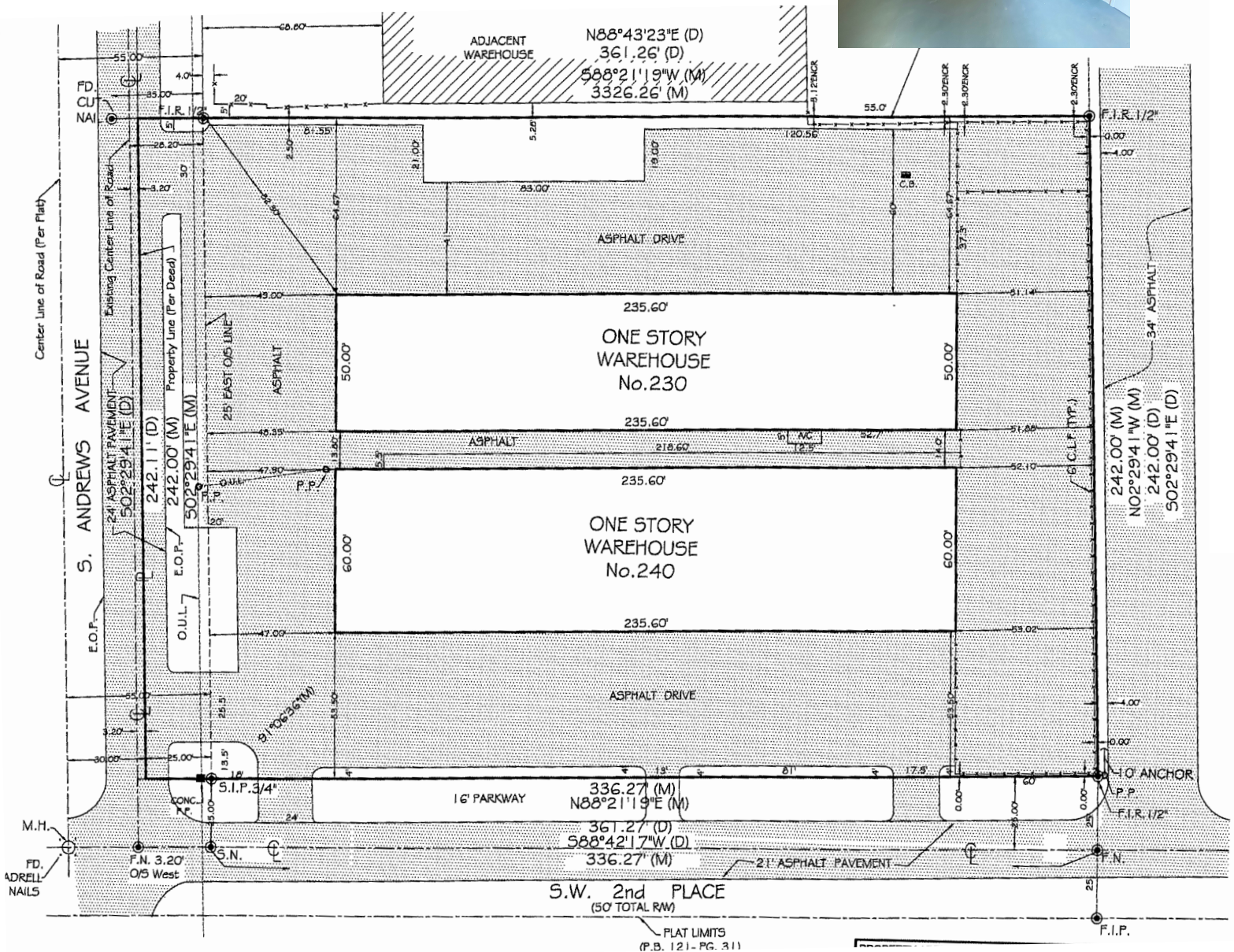


29,100
AADT

Average Age	35.5	42.1	42.2
Female Average Age	37.5	43.8	43.4
Male Average Age	34.9	41.0	41.5



INDUSTRIAL WAREHOUSE SURVEY



Floor plans are intended to give a general indication of the proposed layout only. All images and dimensions are not intended to form part any contract or warranty.

ANDREWS AVENUE WAREHOUSE

LEASING

954.966.8181



CURRENT CAPITAL
Real Estate Group

© 2021 Current Capital Group Real Estate. All rights reserved. This information has been obtained from sources believed reliable, but has not been verified for accuracy or completeness. You should conduct a careful, independent investigation of the property and verify all information. Any reliance on this information is solely at your own risk. Current Capital Group Real Estate and Current Capital Group Real Estate the logo are service marks of Current Capital Group Real Estate. All other marks displayed on this document are the property of their respective owners, and the use of such logos does not imply any affiliation with or endorsement of Current Capital Group Real Estate. Photos herein are the property of their respective owners. Use of these images without the express written consent of the owner is prohibited.

