

6,425 - 84,982 SF

Industrial/Commercial Property For Lease



BROWN
COMMERCIAL GROUP, INC.

6615-6639 W. IRVING PARK RD. / 6610-6620 W. DAKIN ST., CHICAGO, IL 60634

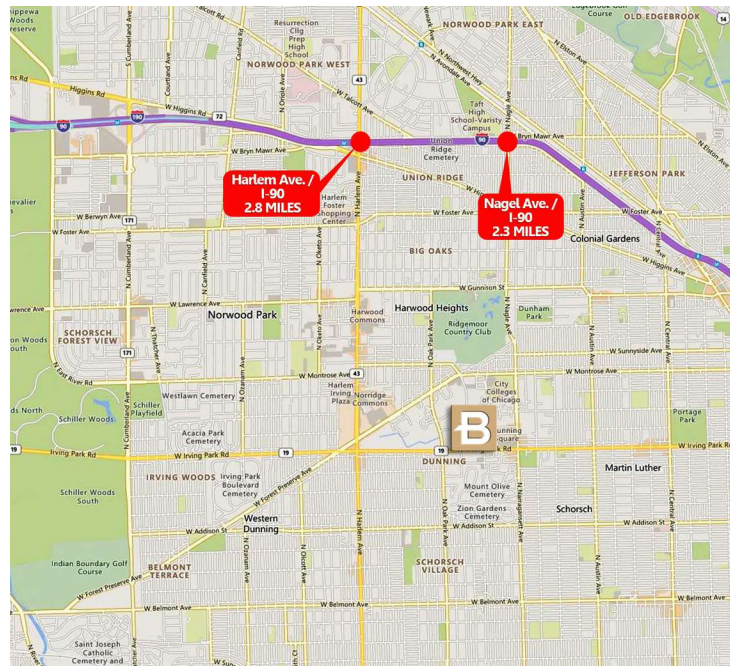


LOCATION DESCRIPTION

Established business district on Irving Park Road with easy access to interstate system via nearby I-90/I-94.

PROPERTY OVERVIEW

- 84,982 SF Total Space Available For Lease
- 6 Individual Units Ranging from 6,425 SF to 24,182 SF
- High visibility business corridor near Harlem Ave. on busy W. Irving Park Road and W. Dakin Street
- Ample Parking Available
- Immediate to 30-60 Days Availability
- Multiple Units/Buildings Can Be Combined
- Lease Rates Subject to Offer



COLLIN TYRRELL

847.758.9200 x303

CTYRRELL@BROWNCOMMERCIAL.COM

PAT CROWLEY

847.758.9200 x310

PCROWLEY@BROWNCOMMERCIAL.COM

DAN BROWN, SIOR

847.758.9200 x302

DBROWN@BROWNCOMMERCIAL.COM

BROWNCOMMERCIAL.COM

//

1400 E. HIGGINS RD. SUITE A, ELK GROVE VILLAGE, IL 60007

//

847.758.9200

No warranties or representations is made as to the accuracy of the foregoing information. Terms and availability are subject to changes or withdrawal without notice

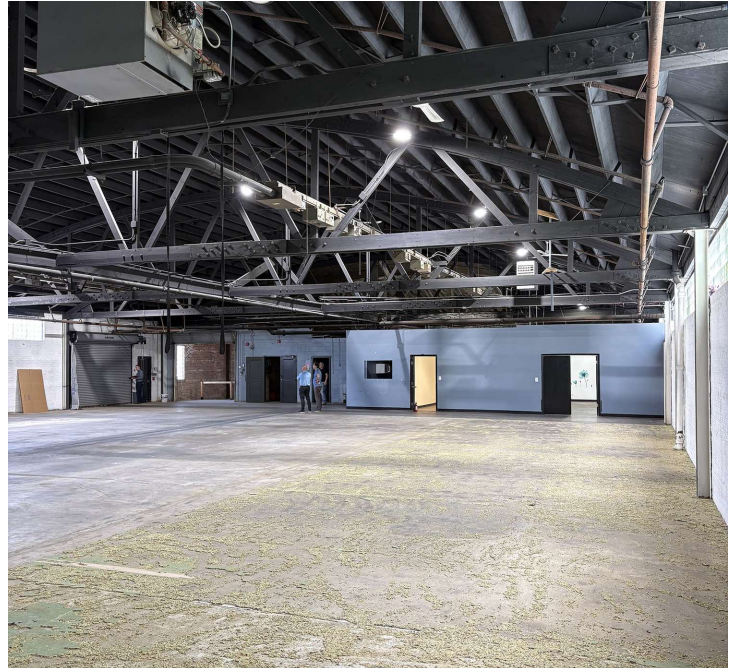
10,715 SF

Industrial/Commercial Property For Lease



BROWN
COMMERCIAL GROUP, INC.

6610 W. DAKIN ST., CHICAGO, IL 60634



COLLIN TYRRELL

847.758.9200 x303

CTYRRELL@BROWNCOMMERCIAL.COM

PAT CROWLEY

847.758.9200 x310

PCROWLEY@BROWNCOMMERCIAL.COM

DAN BROWN, SIOR

847.758.9200 x302

DBROWN@BROWNCOMMERCIAL.COM

BROWNCOMMERCIAL.COM

//

1400 E. HIGGINS RD. SUITE A, ELK GROVE VILLAGE, IL 60007

//

847.758.9200

No warranties or representations is made as to the accuracy of the foregoing information. Terms and availability are subject to changes or withdrawal without notice

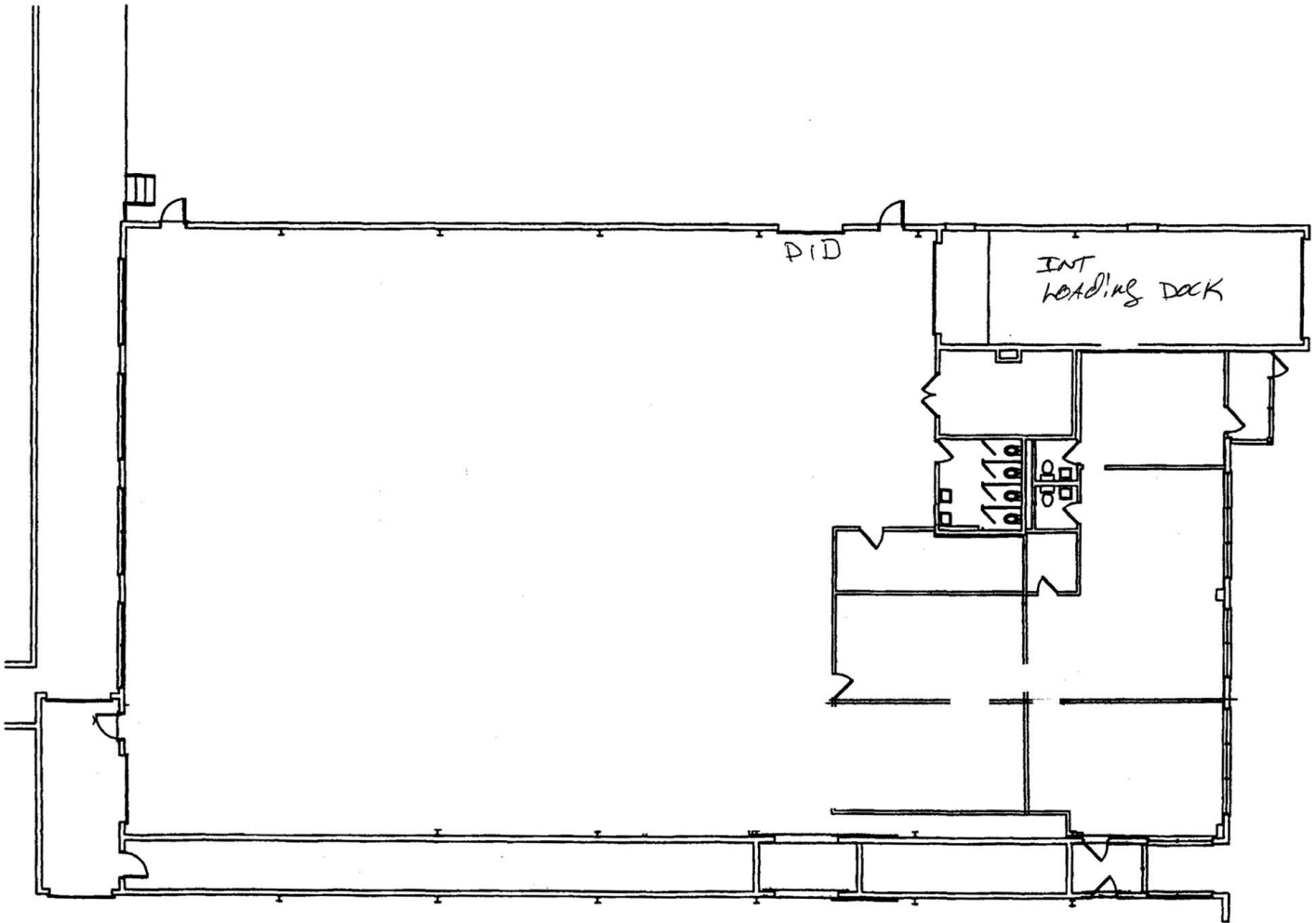
10,715 SF

Industrial/Commercial Property For Lease



BROWN
COMMERCIAL GROUP, INC.

6610 W. DAKIN ST., CHICAGO, IL 60634



Floor Plan

Scale: 1/16" = 1'-0"



Building #5

6610 West Dakin
Chicago, Illinois

COLLIN TYRRELL

847.758.9200 x303

CTYRRELL@BROWNCOMMERCIAL.COM

PAT CROWLEY

847.758.9200 x310

PCROWLEY@BROWNCOMMERCIAL.COM

DAN BROWN, SIOR

847.758.9200 x302

DBROWN@BROWNCOMMERCIAL.COM

BROWNCOMMERCIAL.COM



1400 E. HIGGINS RD. SUITE A, ELK GROVE VILLAGE, IL 60007



847.758.9200

No warranties or representations is made as to the accuracy of the foregoing information. Terms and availability are subject to changes or withdrawal without notice

10,715 SF

Industrial/Commercial Property For Lease



BROWN
COMMERCIAL GROUP, INC.

6620 W. DAKIN ST., CHICAGO, IL 60634



6620 W. DAKIN ST., CHICAGO

- 10,715 SF
- 15% Office Space
- 12' Clear Height
- 1 Dock
- 400 Amp, 480 Volt, 3 Phase Power
- 100% Air Conditioned
- Kitchenette
- Taxes: \$3.20 SF
- CAM: \$1.65 SF
- Lease Rate: Subject to Offer
- Available Immediately

COLLIN TYRRELL

847.758.9200 x303

CTYRRELL@BROWNCOMMERCIAL.COM

PAT CROWLEY

847.758.9200 x310

PCROWLEY@BROWNCOMMERCIAL.COM

DAN BROWN, SIOR

847.758.9200 x302

DBROWN@BROWNCOMMERCIAL.COM

BROWNCOMMERCIAL.COM

//

1400 E. HIGGINS RD. SUITE A, ELK GROVE VILLAGE, IL 60007

//

847.758.9200

No warranties or representations is made as to the accuracy of the foregoing information. Terms and availability are subject to changes or withdrawal without notice

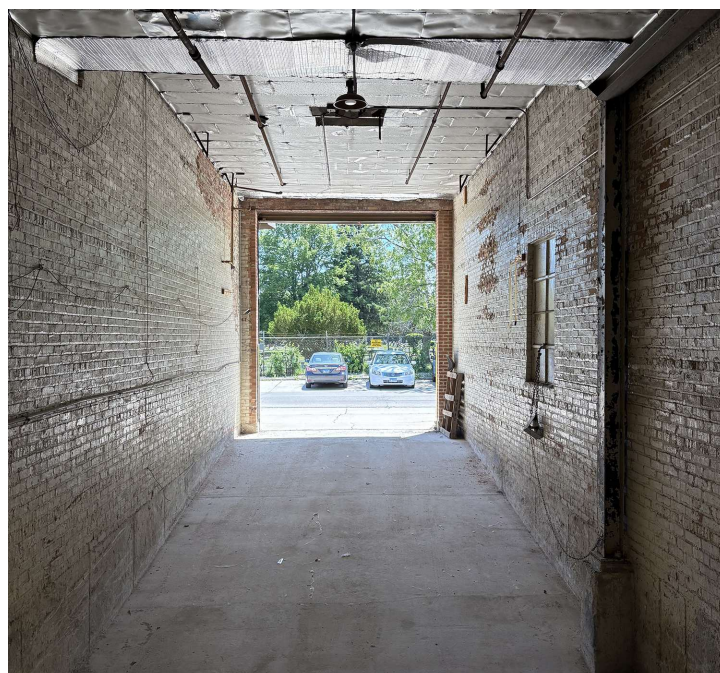
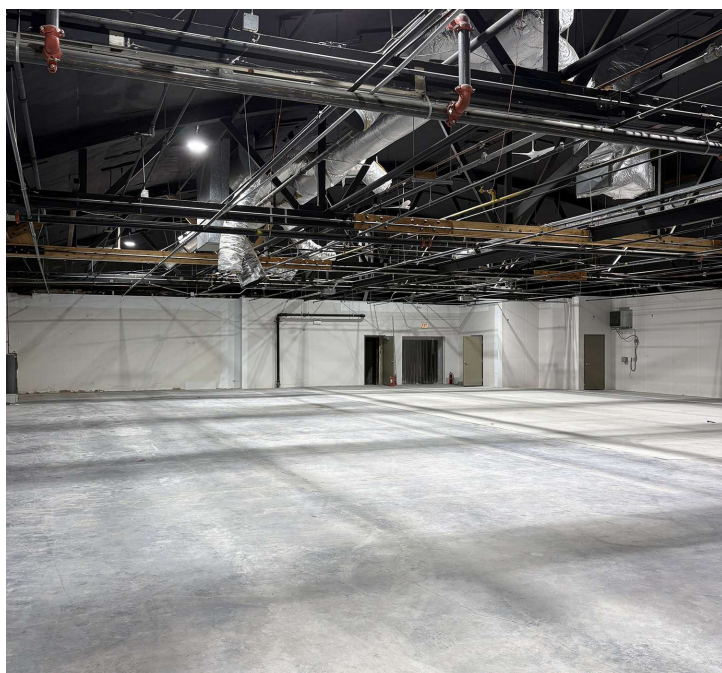
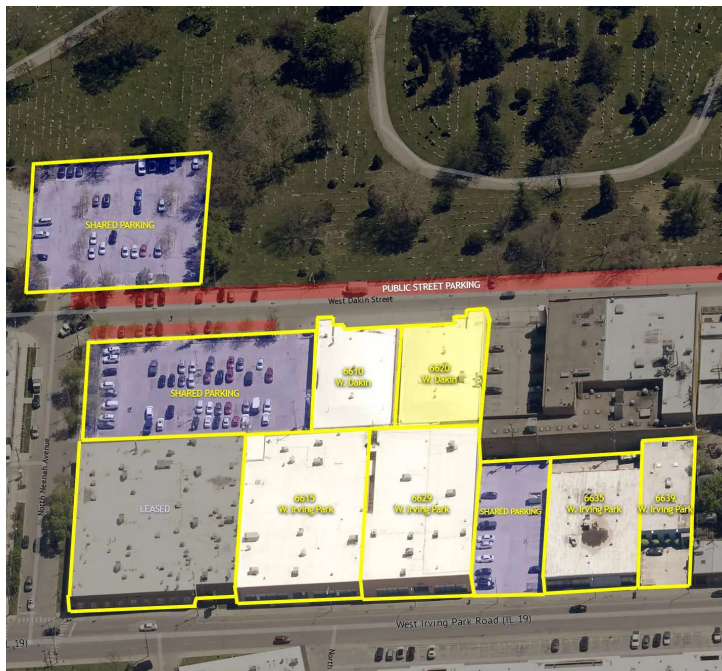
10,715 SF

Industrial/Commercial Property For Lease



BROWN
COMMERCIAL GROUP, INC.

6620 W. DAKIN ST., CHICAGO, IL 60634



COLLIN TYRRELL

847.758.9200 x303

CTYRRELL@BROWNCOMMERCIAL.COM

PAT CROWLEY

847.758.9200 x310

PCROWLEY@BROWNCOMMERCIAL.COM

DAN BROWN, SIOR

847.758.9200 x302

DBROWN@BROWNCOMMERCIAL.COM

BROWNCOMMERCIAL.COM

//

1400 E. HIGGINS RD. SUITE A, ELK GROVE VILLAGE, IL 60007

//

847.758.9200

No warranties or representations is made as to the accuracy of the foregoing information. Terms and availability are subject to changes or withdrawal without notice

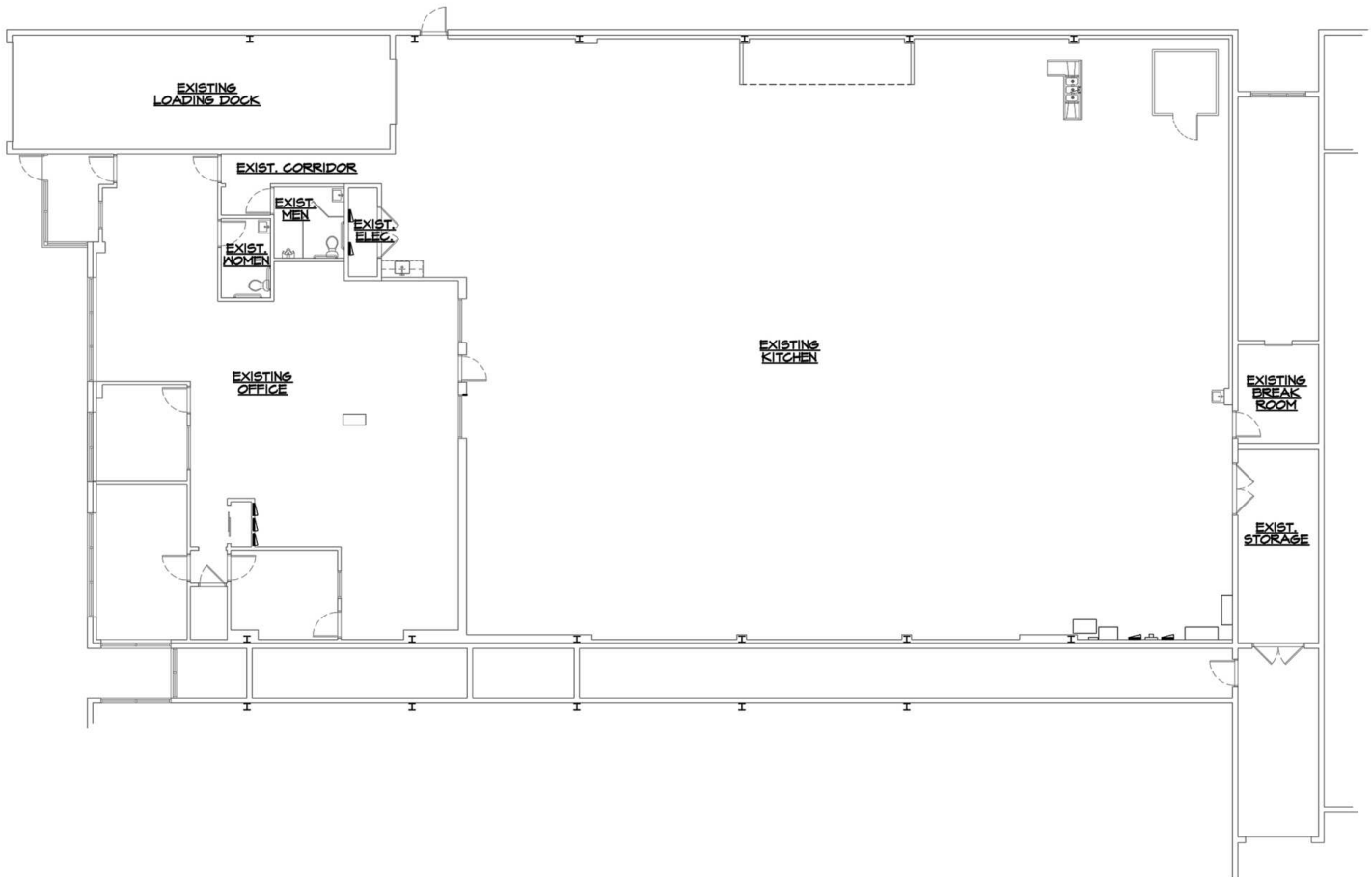
10,715 SF

Industrial/Commercial Property For Lease



BROWN
COMMERCIAL GROUP, INC.

6620 W. DAKIN ST., CHICAGO, IL 60634



AS-BUILT GROUND FLOOR PLAN
SCALE: 1/8" = 1'-0"



BUILDING:
6620 WEST DAKIN
BUILDING #4
CHICAGO, ILLINOIS

COLLIN TYRRELL

847.758.9200 x303

CTYRRELL@BROWNCOMMERCIAL.COM

PAT CROWLEY

847.758.9200 x310

PCROWLEY@BROWNCOMMERCIAL.COM

DAN BROWN, SIOR

847.758.9200 x302

DBROWN@BROWNCOMMERCIAL.COM

BROWNCOMMERCIAL.COM

// 1400 E. HIGGINS RD. SUITE A, ELK GROVE VILLAGE, IL 60007

// 847.758.9200

No warranties or representations is made as to the accuracy of the foregoing information. Terms and availability are subject to changes or withdrawal without notice

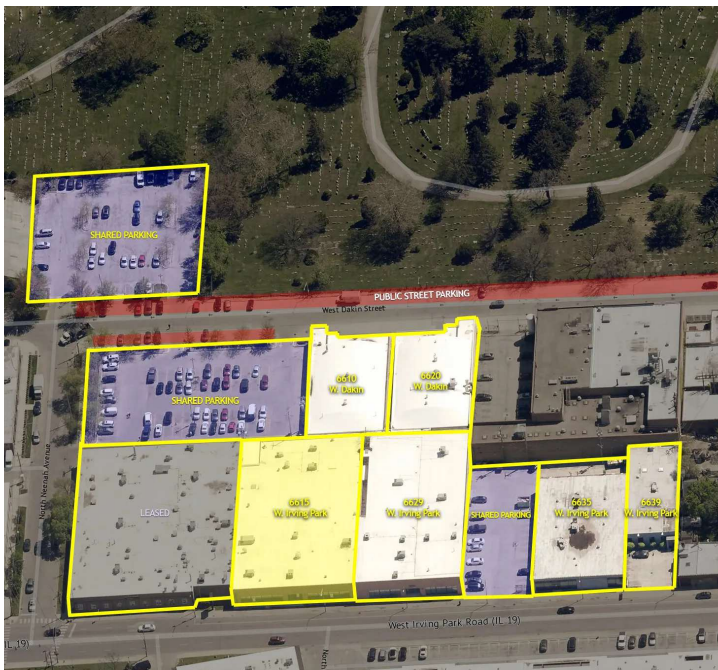
24,182 SF

Industrial/Commercial Property For Lease



BROWN
COMMERCIAL GROUP, INC.

6615 W. IRVING PARK RD., CHICAGO, IL 60634



6615 W. IRVING PARK RD., CHICAGO

- 24,182 SF
- 100% Retail / Office Space
- 14' Clear Height
- 225 Amp, 208 Volt, 3 Phase Power
- 100% Air Conditioned
- Irving Park Road Signage
- Taxes: \$3.95 SF
- CAM: \$1.65 SF
- Lease Rate: Subject to Offer
- Available Immediately

COLLIN TYRRELL

847.758.9200 x303

CTYRRELL@BROWNCOMMERCIAL.COM

PAT CROWLEY

847.758.9200 x310

PCROWLEY@BROWNCOMMERCIAL.COM

DAN BROWN, SIOR

847.758.9200 x302

DBROWN@BROWNCOMMERCIAL.COM

BROWNCOMMERCIAL.COM

//

1400 E. HIGGINS RD. SUITE A, ELK GROVE VILLAGE, IL 60007

//

847.758.9200

No warranties or representations is made as to the accuracy of the foregoing information. Terms and availability are subject to changes or withdrawal without notice

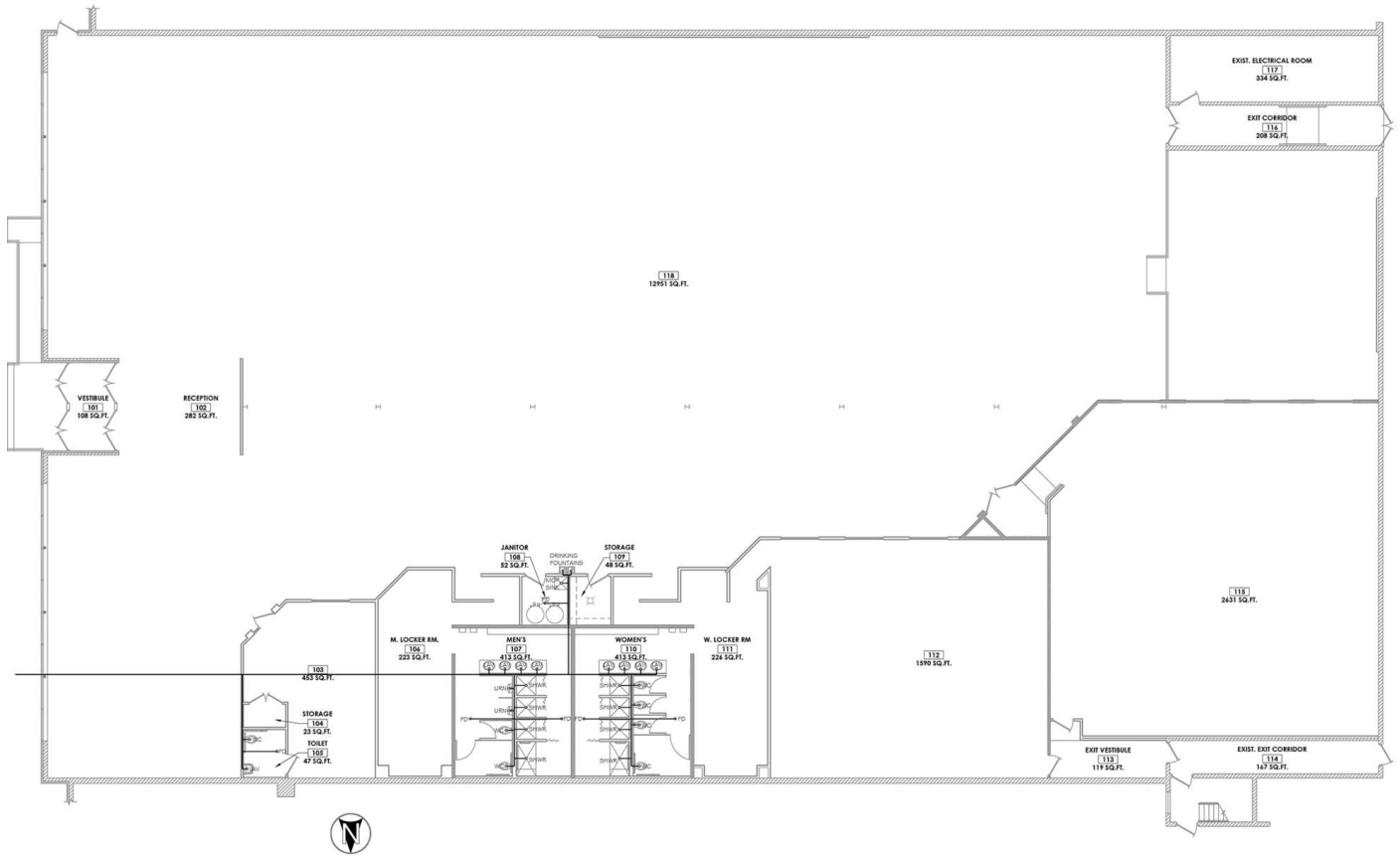
24,182 SF

Industrial/Commercial Property For Lease



BROWN
COMMERCIAL GROUP, INC.

6615 W. IRVING PARK RD., CHICAGO, IL 60634



COLLIN TYRRELL

847.758.9200 x303

CTYRRELL@BROWNCOMMERCIAL.COM

PAT CROWLEY

847.758.9200 x310

PCROWLEY@BROWNCOMMERCIAL.COM

DAN BROWN, SIOR

847.758.9200 x302

DBROWN@BROWNCOMMERCIAL.COM

BROWNCOMMERCIAL.COM

//

1400 E. HIGGINS RD. SUITE A, ELK GROVE VILLAGE, IL 60007

//

847.758.9200

No warranties or representations is made as to the accuracy of the foregoing information. Terms and availability are subject to changes or withdrawal without notice

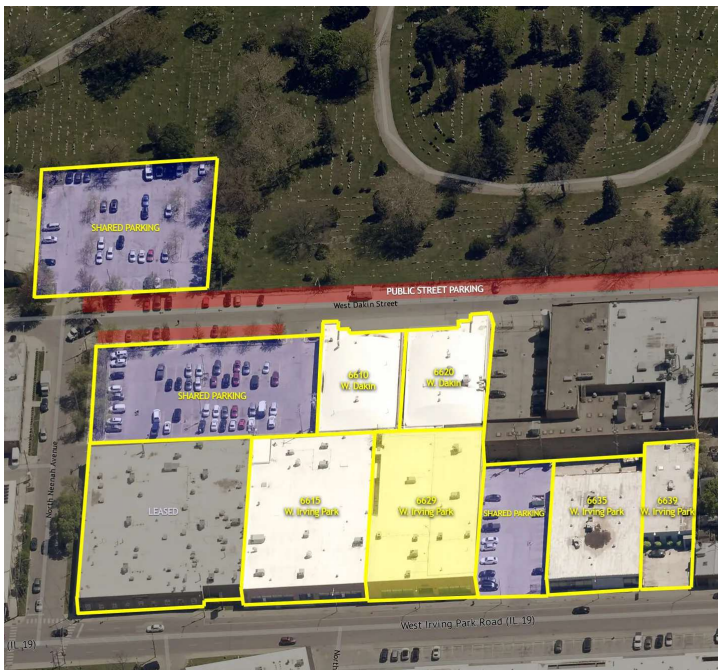
20,700 SF

Industrial/Commercial Property For Lease



BROWN
COMMERCIAL GROUP, INC.

6629 W. IRVING PARK RD., CHICAGO, IL 60634



6629 W. IRVING PARK RD., CHICAGO

- 20,700 SF
- 25% Office Space
- 16' 6" Clear Height
- 2 Drive-in Doors (10'x10' and 12'x12')
- 300 Amp, 480 Volt, 3 Phase Power
- 100% Air Conditioned
- Kitchenette
- Irving Park Road Signage
- Taxes: \$3.20 SF
- CAM: \$1.65 SF
- Lease Rate: Subject to Offer
- Available Immediately

COLLIN TYRRELL

847.758.9200 x303

CTYRRELL@BROWNCOMMERCIAL.COM

PAT CROWLEY

847.758.9200 x310

PCROWLEY@BROWNCOMMERCIAL.COM

DAN BROWN, SIOR

847.758.9200 x302

DBROWN@BROWNCOMMERCIAL.COM

BROWNCOMMERCIAL.COM

//

1400 E. HIGGINS RD. SUITE A, ELK GROVE VILLAGE, IL 60007

//

847.758.9200

No warranties or representations is made as to the accuracy of the foregoing information. Terms and availability are subject to changes or withdrawal without notice

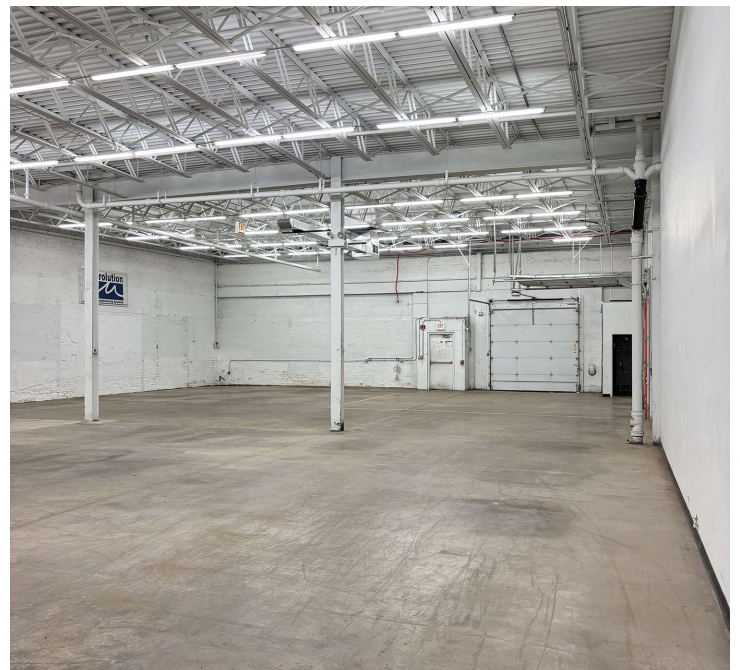
20,700 SF

Industrial/Commercial Property For Lease



BROWN
COMMERCIAL GROUP, INC.

6629 W. IRVING PARK RD., CHICAGO, IL 60634



COLLIN TYRRELL

847.758.9200 x303

CTYRRELL@BROWNCOMMERCIAL.COM

PAT CROWLEY

847.758.9200 x310

PCROWLEY@BROWNCOMMERCIAL.COM

DAN BROWN, SIOR

847.758.9200 x302

DBROWN@BROWNCOMMERCIAL.COM

BROWNCOMMERCIAL.COM

//

1400 E. HIGGINS RD. SUITE A, ELK GROVE VILLAGE, IL 60007

//

847.758.9200

No warranties or representations is made as to the accuracy of the foregoing information. Terms and availability are subject to changes or withdrawal without notice

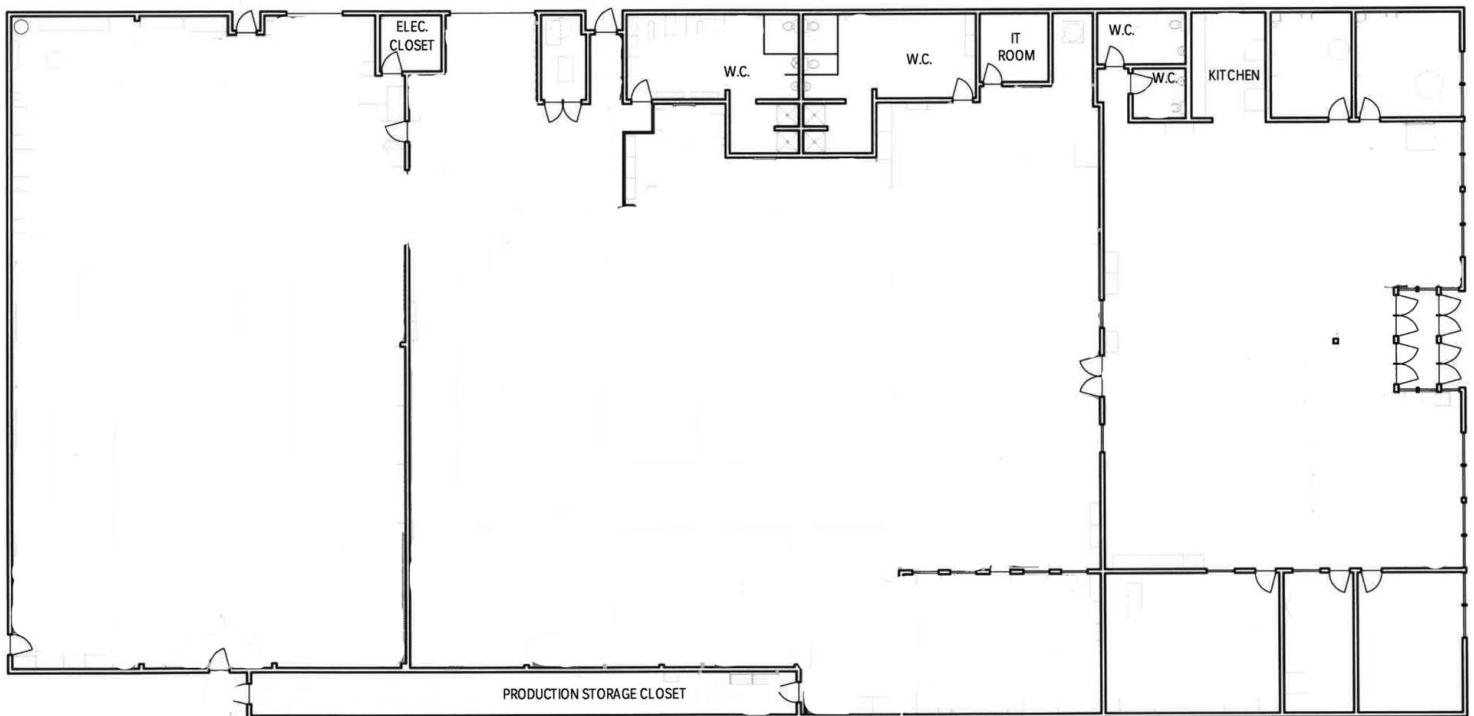
20,700 SF

Industrial/Commercial Property For Lease



BROWN
COMMERCIAL GROUP, INC.

6629 W. IRVING PARK RD., CHICAGO, IL 60634



COLLIN TYRRELL

847.758.9200 x303

CTYRRELL@BROWNCOMMERCIAL.COM

PAT CROWLEY

847.758.9200 x310

PCROWLEY@BROWNCOMMERCIAL.COM

DAN BROWN, SIOR

847.758.9200 x302

DBROWN@BROWNCOMMERCIAL.COM

BROWNCOMMERCIAL.COM

//

1400 E. HIGGINS RD. SUITE A, ELK GROVE VILLAGE, IL 60007

//

847.758.9200

No warranties or representations is made as to the accuracy of the foregoing information. Terms and availability are subject to changes or withdrawal without notice

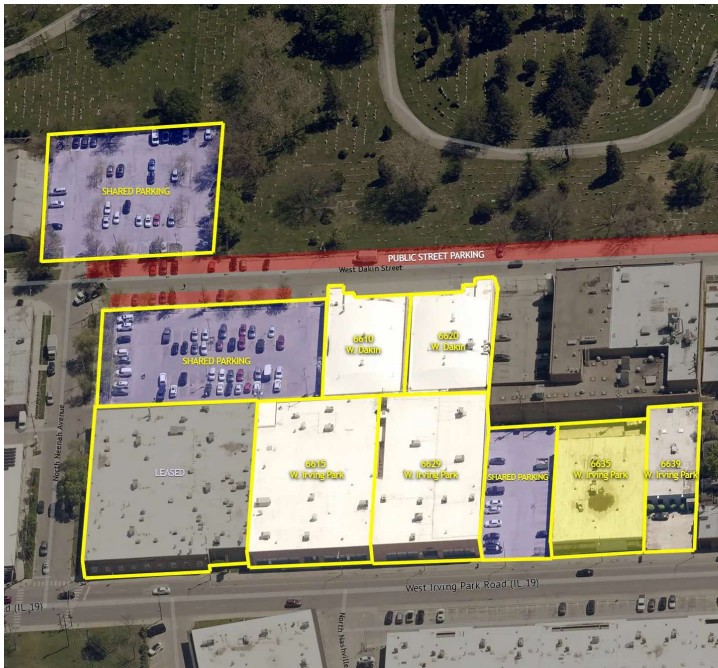
12,245 SF

Industrial/Commercial Property For Lease



BROWN
COMMERCIAL GROUP, INC.

6635 W. IRVING PARK RD., CHICAGO, IL 60634



6635 W. IRVING PARK RD., CHICAGO

- 12,245 SF
- 30% Office Space
- 12' Clear Height
- 1 Drive-in Door
- 600 Amp, 480 Volt, 3 Phase Power
- 100% Air Conditioned
- Kitchenette
- Irving Park Road Signage
- Taxes: \$3.20 SF
- CAM: \$1.65 SF
- Lease Rate: Subject to Offer
- Available Immediately

COLLIN TYRRELL

847.758.9200 x303

CTYRRELL@BROWNCOMMERCIAL.COM

PAT CROWLEY

847.758.9200 x310

PCROWLEY@BROWNCOMMERCIAL.COM

DAN BROWN, SIOR

847.758.9200 x302

DBROWN@BROWNCOMMERCIAL.COM

BROWNCOMMERCIAL.COM

//

1400 E. HIGGINS RD. SUITE A, ELK GROVE VILLAGE, IL 60007

//

847.758.9200

No warranties or representations is made as to the accuracy of the foregoing information. Terms and availability are subject to changes or withdrawal without notice

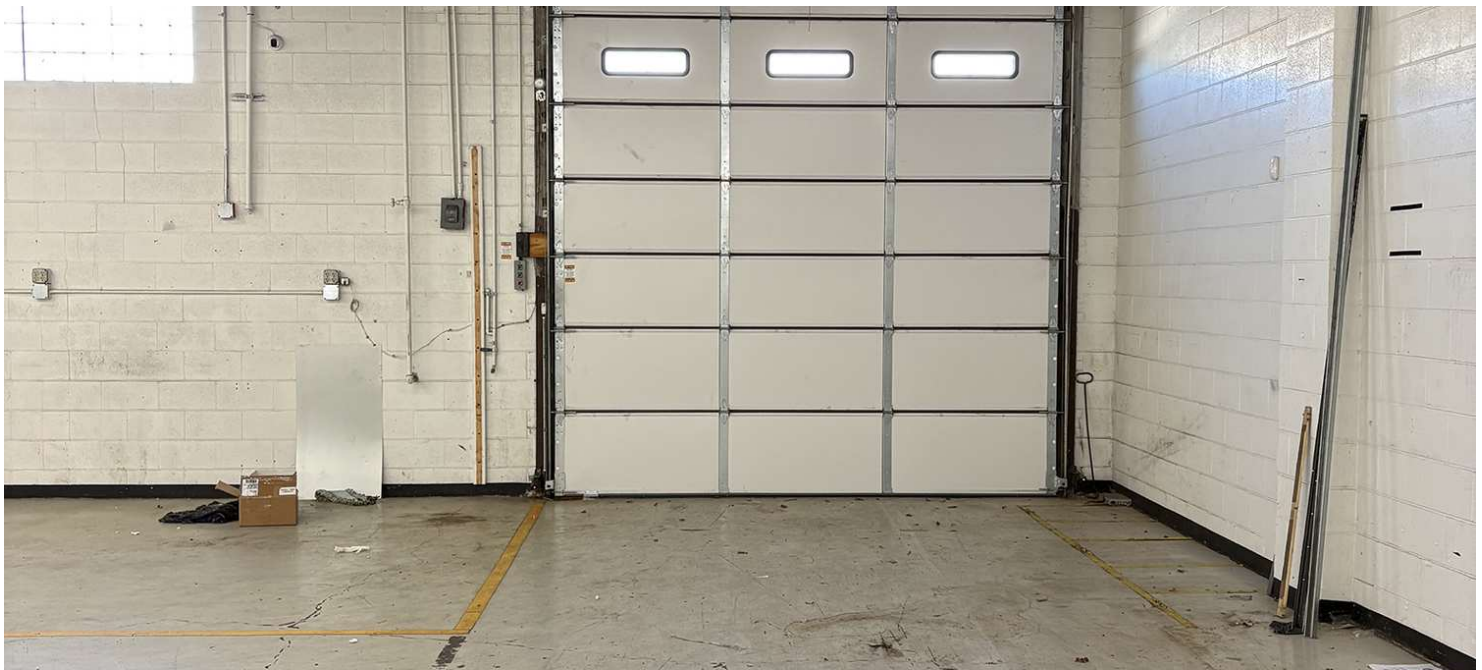
12,245 SF

Industrial/Commercial Property For Lease



BROWN
COMMERCIAL GROUP, INC.

6635 W. IRVING PARK RD., CHICAGO, IL 60634



COLLIN TYRRELL

847.758.9200 x303

CTYRRELL@BROWNCOMMERCIAL.COM

PAT CROWLEY

847.758.9200 x310

PCROWLEY@BROWNCOMMERCIAL.COM

DAN BROWN, SIOR

847.758.9200 x302

DBROWN@BROWNCOMMERCIAL.COM

BROWNCOMMERCIAL.COM

//

1400 E. HIGGINS RD. SUITE A, ELK GROVE VILLAGE, IL 60007

//

847.758.9200

No warranties or representations is made as to the accuracy of the foregoing information. Terms and availability are subject to changes or withdrawal without notice

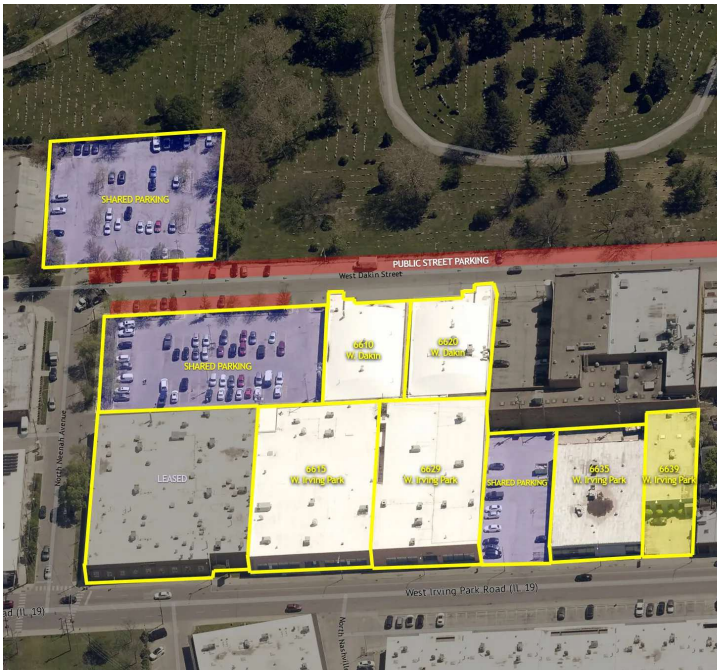
6,425 SF

Industrial/Commercial Property For Lease



BROWN
COMMERCIAL GROUP, INC.

6639 W. IRVING PARK RD., CHICAGO, IL 60634



6639 W. IRVING PARK RD., CHICAGO

- 6,425 SF
- 20% Office Space
- 12' Clear Height
- 1 Drive-in Door
- 200 Amp, 240 Volt, 3 Phase Power
- 100% Air Conditioned
- Kitchenette/Breakroom
- Irving Park Road Signage
- Taxes: \$3.20 SF
- CAM: \$1.65 SF
- Lease Rate: Subject to Offer
- Available 30-60 Days

COLLIN TYRRELL

847.758.9200 x303

CTYRRELL@BROWNCOMMERCIAL.COM

PAT CROWLEY

847.758.9200 x310

PCROWLEY@BROWNCOMMERCIAL.COM

DAN BROWN, SIOR

847.758.9200 x302

DBROWN@BROWNCOMMERCIAL.COM

BROWNCOMMERCIAL.COM

//

1400 E. HIGGINS RD. SUITE A, ELK GROVE VILLAGE, IL 60007

//

847.758.9200

No warranties or representations is made as to the accuracy of the foregoing information. Terms and availability are subject to changes or withdrawal without notice

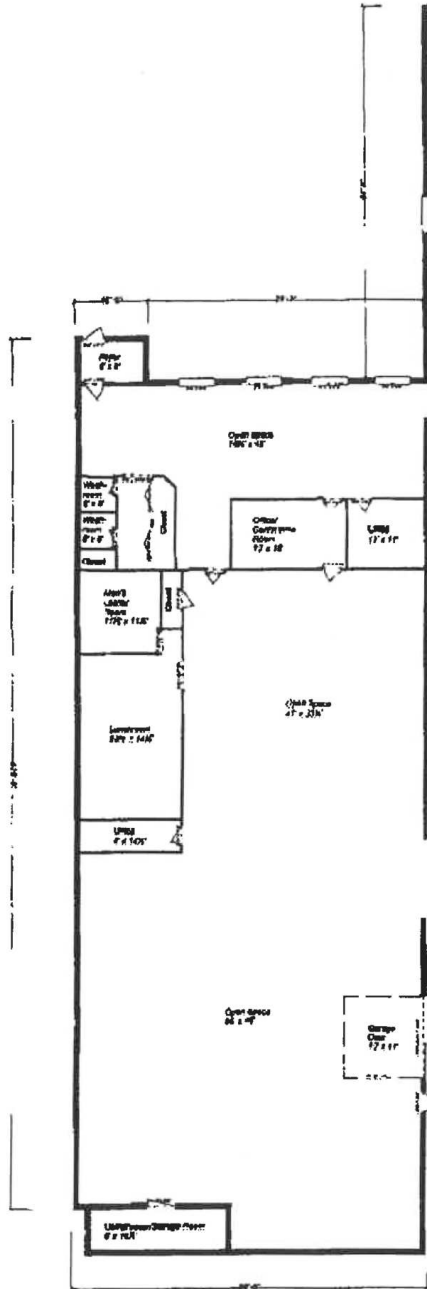
6,425 SF

Industrial/Commercial Property For Lease



BROWN
COMMERCIAL GROUP, INC.

6639 W. IRVING PARK RD., CHICAGO, IL 60634



6639 West Irving Park Rd Chicago, Il 60634

COLLIN TYRRELL

847.758.9200 x303

CTYRRELL@BROWNCOMMERCIAL.COM

PAT CROWLEY

847.758.9200 x310

PCROWLEY@BROWNCOMMERCIAL.COM

DAN BROWN, SIOR

847.758.9200 x302

DBROWN@BROWNCOMMERCIAL.COM

BROWNCOMMERCIAL.COM

//

1400 E. HIGGINS RD. SUITE A, ELK GROVE VILLAGE, IL 60007

//

847.758.9200

No warranties or representations is made as to the accuracy of the foregoing information. Terms and availability are subject to changes or withdrawal without notice