

200 Professional Drive, Gaithersburg, Maryland



Available: 3,500 to 31,022 Sq. Ft.

For Lease or Sale

Biotech, Medical and Office

Ample Free Parking

Next to I-270 Interchange at Watkins Mill Road

By Rt. 355 and many amenities

Contact: ROSSI Commercial Real Estate

Bill Wanatosky - 301-355-0072

Bill.wanatosky@rossicre.com

Brian Rossi – 301-355-0077

Brian.rossi@rossicre.com



Campus Information

Building Information:

Address:	200 Professional Drive Gaithersburg, Maryland 20879
Leasing and Sales:	ROSSI Commercial Real Estate
Features:	4 Story Professional Building Lots of Parking Close to I-270 Exchange Rt. 355, Retail, Amenities
Tenants	MAGBIO Genomics 1 st , 2 nd Floors
Seeking	Life Sciences, Medical and Professional Office

Contact information:

Brian Rossi

Direct: 301-355-0077

brian.rossi@rossicre.com

Bill Wanatosky

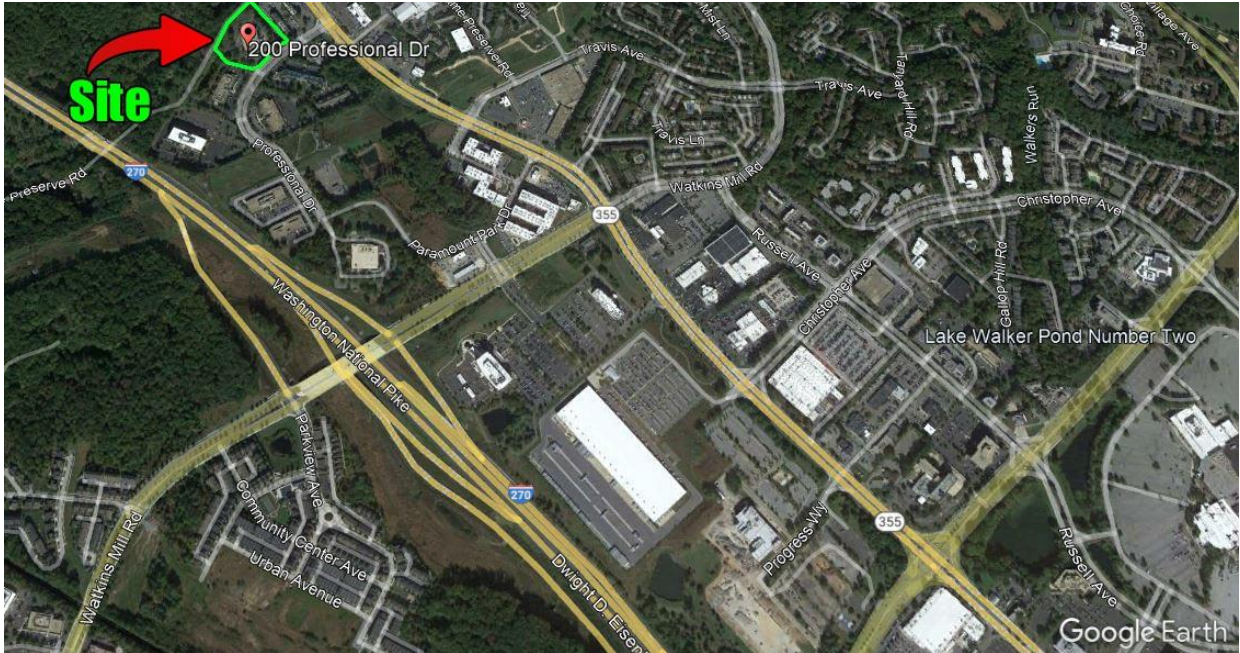
Direct: 301-355-0072

bill.wanatosky@rossicre.com

ROSSI Commercial Real Estate

12800 Middlebrook Road ♦ Suite 200 ♦ Germantown, Maryland 20874 ♦ 301-355-0070

www.ROSSICRE.com

Area Map and Aerial Images:**Loading Area****ROSSI Commercial Real Estate****12800 Middlebrook Road ♦ Suite 200 ♦ Germantown, Maryland 20874 ♦ 301-355-0070****www.ROSSICRE.com**

Recently Leased: **MAGBIO Genomics**

(occupying most of 1st floor, all of 2nd Floor)



Lots of Parking Spaces



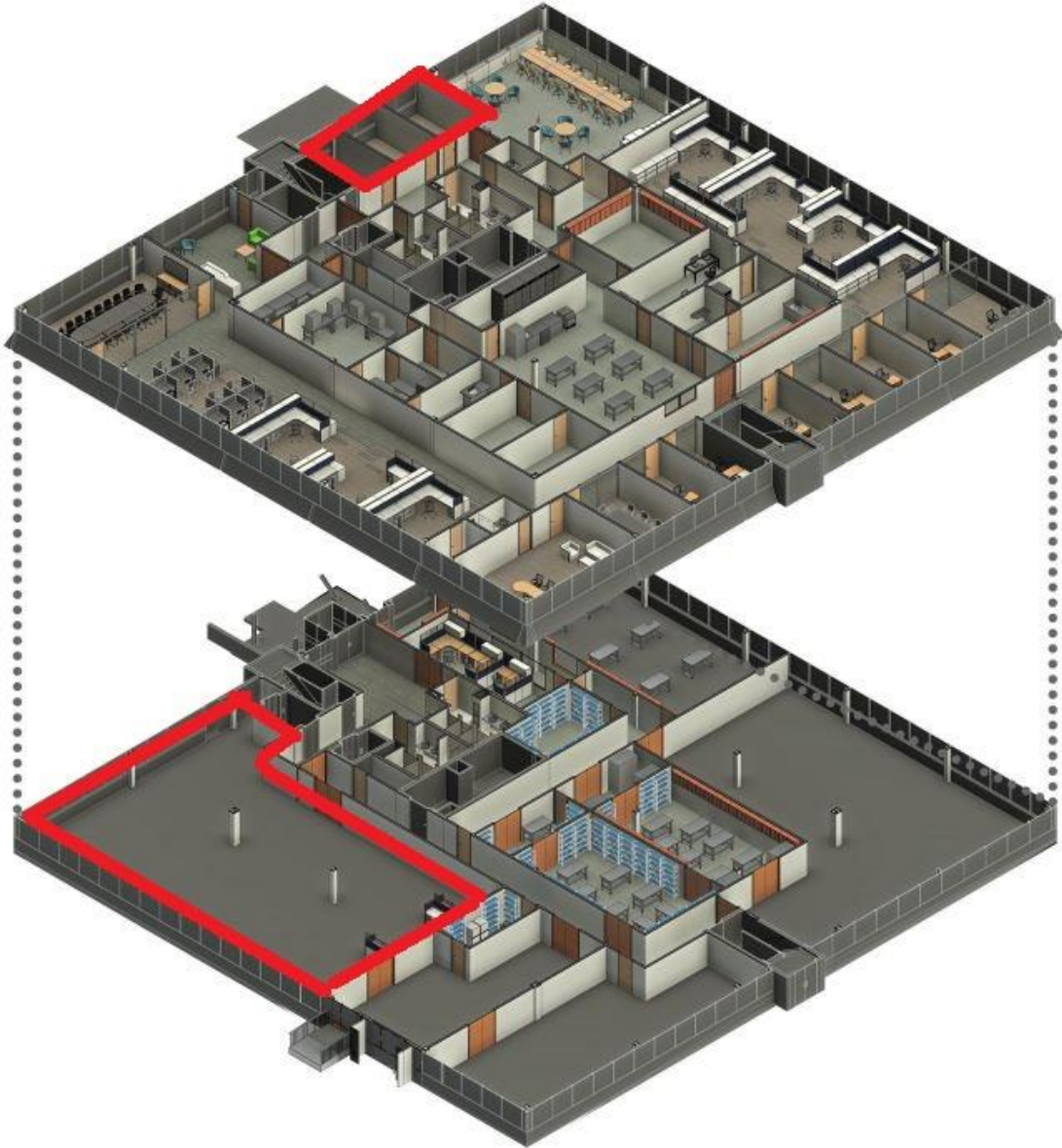
ROSSI Commercial Real Estate

12800 Middlebrook Road ♦ Suite 200 ♦ Germantown, Maryland 20874 ♦ 301-355-0070

www.ROSSICRE.com

Floor Plans

First and Second Floors – Partial Availability Shown in Red
3,600 SF on First Floor, 3 Private Offices on Second Floor



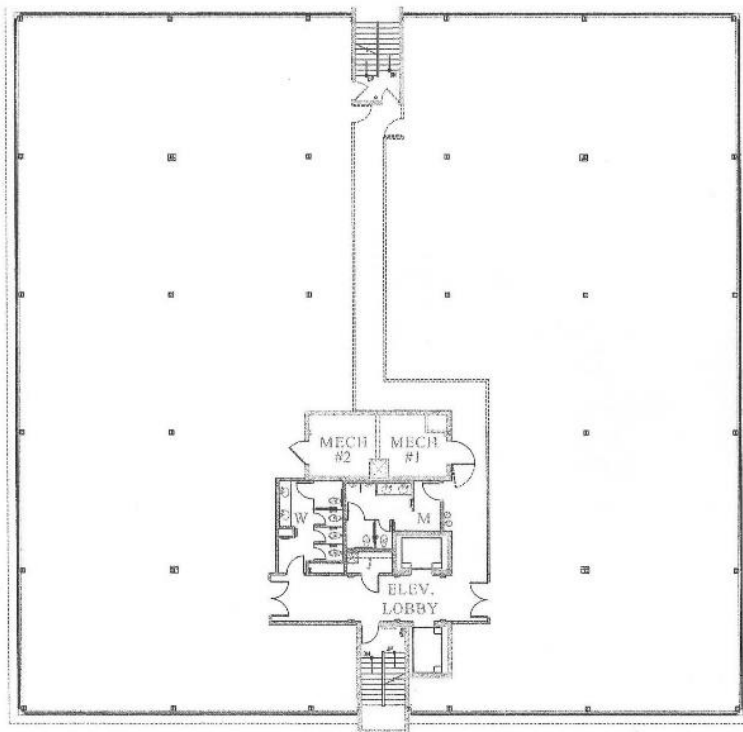
ROSSI Commercial Real Estate

12800 Middlebrook Road ♦ Suite 200 ♦ Germantown, Maryland 20874 ♦ 301-355-0070

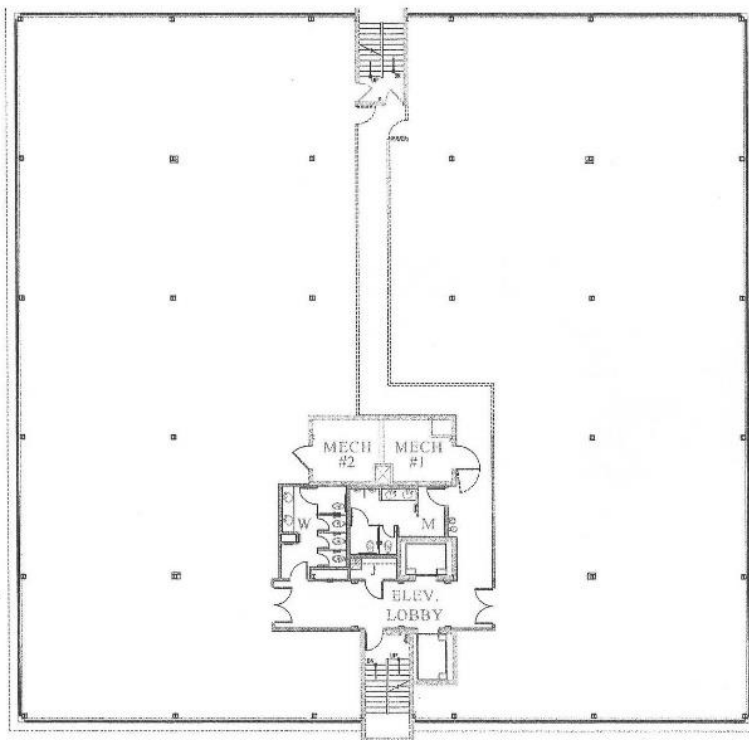
www.ROSSICRE.com

Floor Plans

Third Floor – Full Floor Available 15,511 SF



Fourth Floor – Full Floor Available 15,511 SF



ROSSI Commercial Real Estate

12800 Middlebrook Road ♦ Suite 200 ♦ Germantown, Maryland 20874 ♦ 301-355-0070

www.ROSSICRE.com