

CLASS A OFFICE SPACE FOR LEASE

3601 N. STAGECOACH ROAD, SUITE 101

LONGMONT, COLORADO 80504



FOR LEASE

RE/MAX ELEVATE
724 Main Street
Louisville, CO 80027



PRESENTED BY:

KEITH KANEMOTO, SIOR
Broker Associate
cell: (303) 472-2222
keith@kanemoto.com

The calculations and data presented are deemed to be accurate, but not guaranteed. They are intended for the purpose of illustrative projections and analysis. The information provided is not intended to replace or serve as substitute for any legal, accounting, investment, real estate, tax or other professional advice, consultation or service. The user of this software should consult with a professional in the respective legal, accounting, tax or other professional area before making any decisions.

PROPERTY SUMMARY

3601 STAGECOACH ROAD NORTH, SUITE 101 | LONGMONT, CO 80504



Property Summary

Lease Rate:	\$16.50 PSF
Triple Nets:	\$12.18 PSF
Suite Size:	4,401 SF
Lease Term:	Negotiable
Building Size:	14,144 SF
Year Built:	2007
Zoning:	PUD
County:	Weld
Available:	November 2025

Property Overview

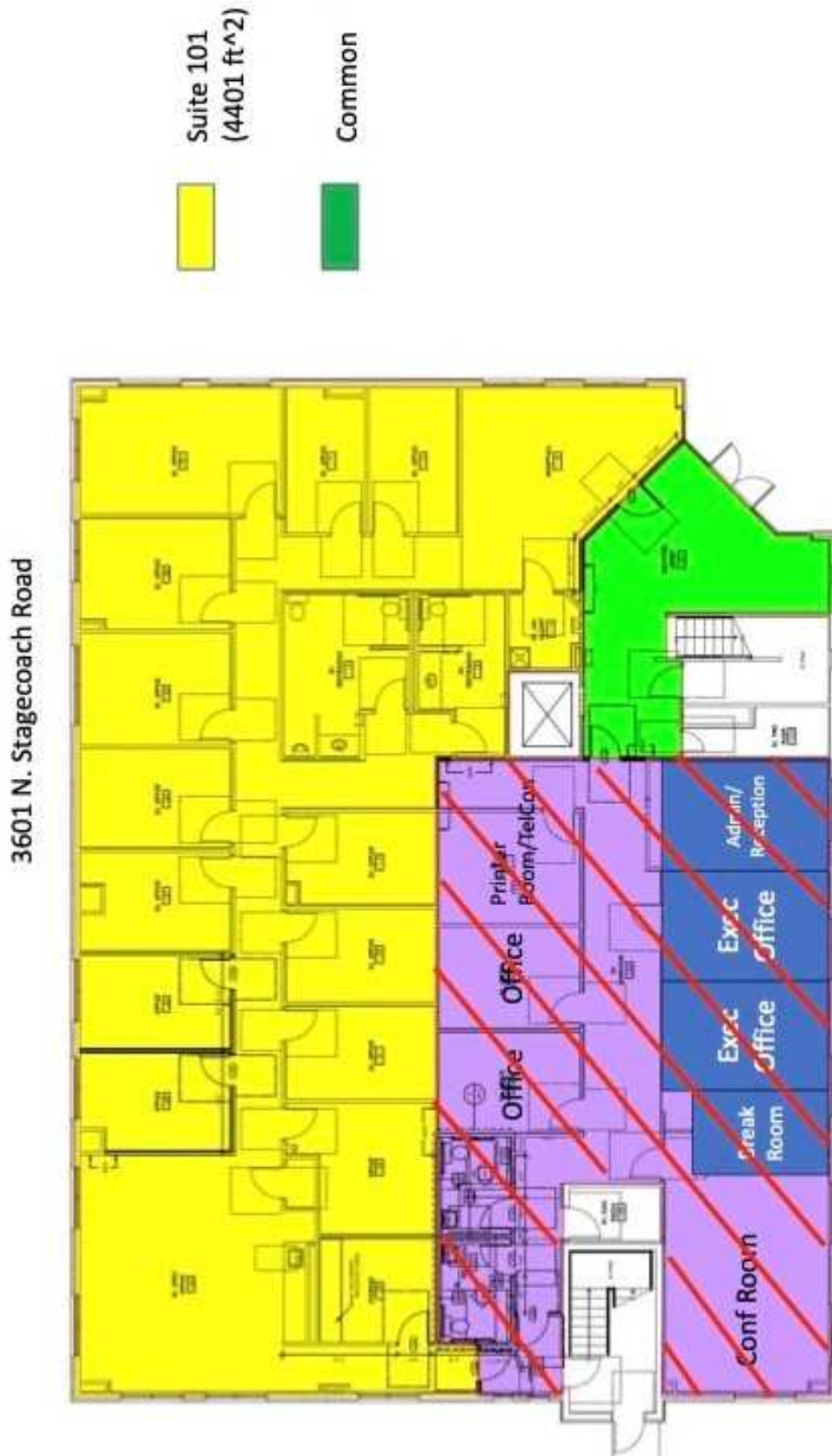
This Class "A" office space is ready for a new user. It checks the boxes for many features that companies are looking for in new office space with a reception area, multiple private offices, bullpen space, conference room, private restrooms, and a kitchenette. Don't miss out on this opportunity!

Location Overview

- A large concrete parking lot with ample parking for employees and guests.
- Large glass exterior windows for natural light into the space.
- Easy access to I-25 and along the Front Range.
- Monument signage on Highway 119 is available.
- High speed Internet available.

FLOOR PLAN

3601 STAGECOACH ROAD NORTH SUITE 101 | LONGMONT, CO 80504



BUSINESS MAP

3601 STAGECOACH ROAD NORTH, SUITE 101 | LONGMONT, CO 80504

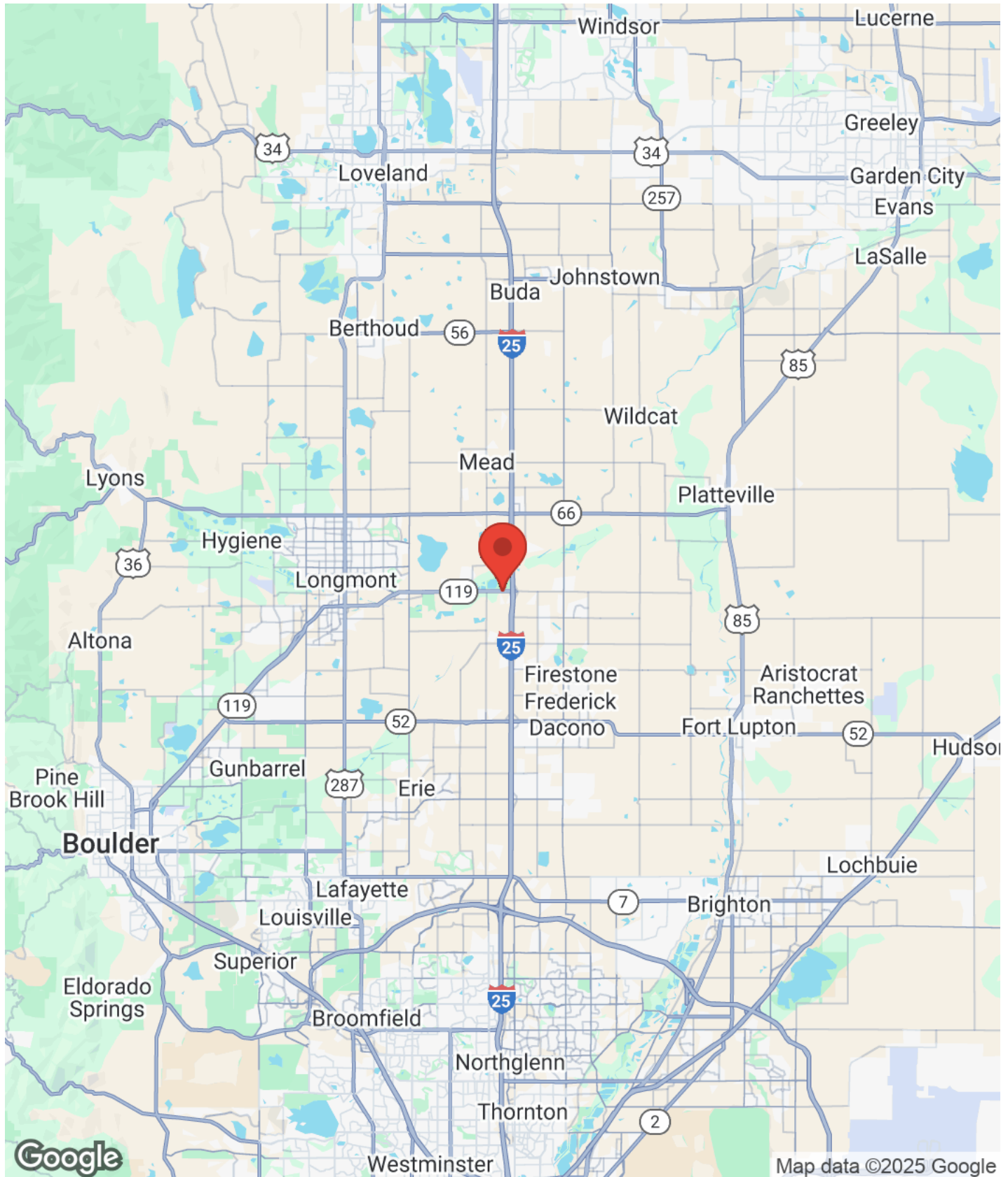


RE/MAX ELEVATE
724 Main Street
Louisville, CO 80027

KEITH KANEMOTO, SIOR
Broker Associate
C: (303) 472-2222
keith@kanemoto.com



3601 STAGECOACH ROAD NORTH, SUITE 101 | LONGMONT, CO 80504



RE/MAX ELEVATE
724 Main Street
Louisville, CO 80027



KEITH KANEMOTO, SIOR
Broker Associate
C: (303) 472-2222
keith@kanemoto.com

DISCLAIMER

3601 STAGECOACH ROAD NORTH



All materials and information received or derived from RE/MAX Elevate its directors, officers, agents, advisors, affiliates and/or any third party sources are provided without representation or warranty as to completeness, veracity, or accuracy, condition of the property, compliance or lack of compliance with applicable governmental requirements, developability or suitability, financial performance of the property, projected financial performance of the property for any party's intended use or any and all other matters.

Neither RE/MAX Elevate its directors, officers, agents, advisors, or affiliates makes any representation or warranty, express or implied, as to accuracy or completeness of the materials or information provided, derived, or received. Materials and information from any source, whether written or verbal, that may be furnished for review are not a substitute for a party's active conduct of its own due diligence to determine these and other matters of significance to such party. RE/MAX Elevate will not investigate or verify any such matters or conduct due diligence for a party unless otherwise agreed in writing.

EACH PARTY SHALL CONDUCT ITS OWN INDEPENDENT INVESTIGATION AND DUE DILIGENCE.

Any party contemplating or under contract or in escrow for a transaction is urged to verify all information and to conduct their own inspections and investigations including through appropriate third-party independent professionals selected by such party. All financial data should be verified by the party including by obtaining and reading applicable documents and reports and consulting appropriate independent professionals. RE/MAX Elevate makes no warranties and/or representations regarding the veracity, completeness, or relevance of any financial data or assumptions. RE/MAX Elevate does not serve as a financial advisor to any party regarding any proposed transaction.

All data and assumptions regarding financial performance, including that used for financial modeling purposes, may differ from actual data or performance. Any estimates of market rents and/or projected rents that may be provided to a party do not necessarily mean that rents can be established at or increased to that level. Parties must evaluate any applicable contractual and governmental limitations as well as market conditions, vacancy factors and other issues in order to determine rents from or for the property. Legal questions should be discussed by the party with an attorney. Tax questions should be discussed by the party with a certified public accountant or tax attorney. Title questions should be discussed by the party with a title officer or attorney. Questions regarding the condition of the property and whether the property complies with applicable governmental requirements should be discussed by the party with appropriate engineers, architects, contractors, other consultants, and governmental agencies. All properties and services are marketed by RE/MAX Elevate in compliance with all applicable fair housing and equal opportunity laws.

RE/MAX ELEVATE

724 Main Street
Louisville, CO 80027



PRESENTED BY:

KEITH KANEMOTO, SIOR

Broker Associate

C: (303) 472-2222

keith@kanemoto.com

The calculations and data presented are deemed to be accurate, but not guaranteed. They are intended for the purpose of illustrative projections and analysis. The information provided is not intended to replace or serve as substitute for any legal, accounting, investment, real estate, tax or other professional advice, consultation or service. The user of this software should consult with a professional in the respective legal, accounting, tax or other professional area before making any decisions.