

# NOW LEASING

**Preferred**  
Real Estate Partners



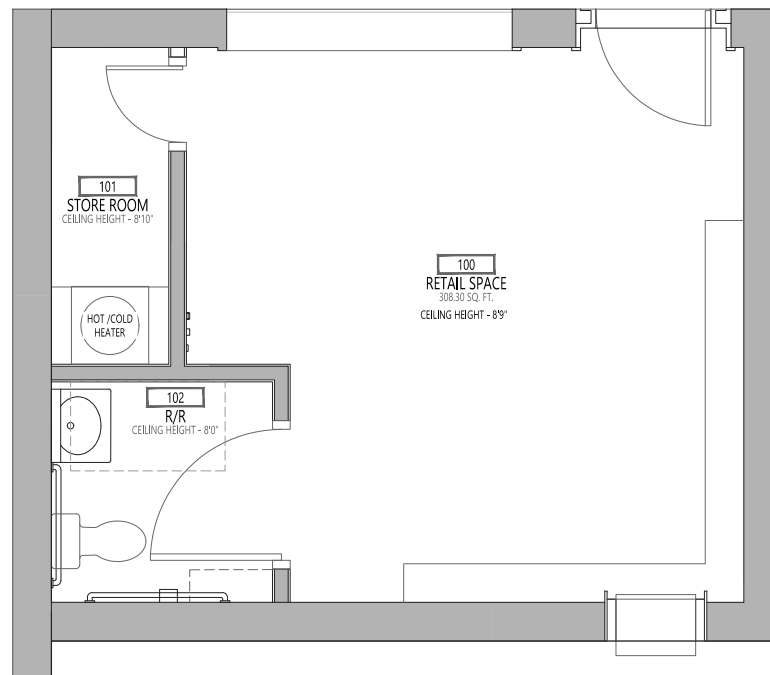
**2319**  
MAIN ST

Waller, TX 77484





# FLOOR PLAN



# LEASE INFORMATION

**Type:** Flat Rate

**Term:** 36 months min.

## SIZE

+/- 363 SF

## DESCRIPTION

As is

DISCLAIMER: These numbers reflect what is currently available for lease and do not describe the total square footage





# PROPERTY HIGHLIGHTS

Quick Access to U.S. 290  
High Visibility and Easy Accessibility  
High Traffic

**OFFERING SUMMARY** Call for pricing



## CONTACT US

### Head Office

31406 Farm to Market 2920 Suite B201,  
Waller, TX 77484

936-213-9481

[Moreinfo@Preferred-Realty.com](mailto:Moreinfo@Preferred-Realty.com)

### Inquiries

For any inquiries, questions  
or recommendations,  
please call: 936-231-9481