

Existing Medical Space for Sublease

824 Main Street

Phoenixville, PA 19460



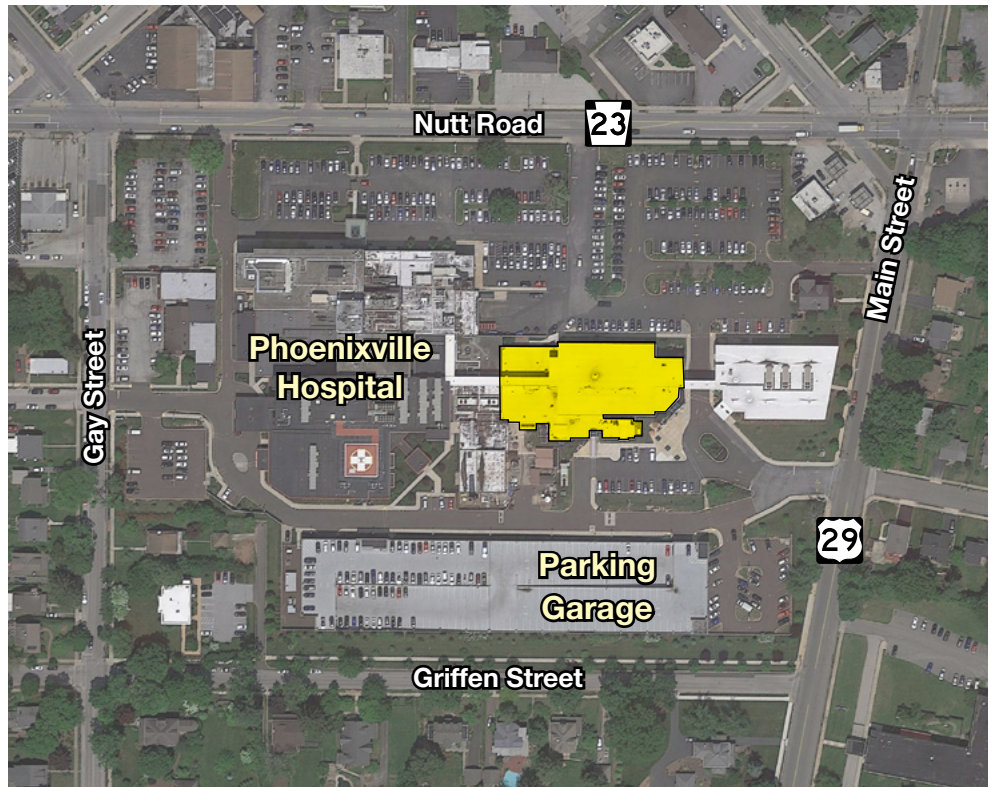
Medical Office Space Available

Building Highlights

- Adjacent to Phoenixville Hospital with direct access via connector
- Abundant parking surrounding the hospital
- Multi-tenant medical office building
- Beautiful open lobby
- Fully ADA accessible

Availabilities

- **Suite 201:** 5,186 RSF
- Term through 12/31/2031
- Existing ready to go medical space for immediate occupancy



For more information, please contact:



Adam Knox
aknox@geisrealty.com
(610) 989-0300

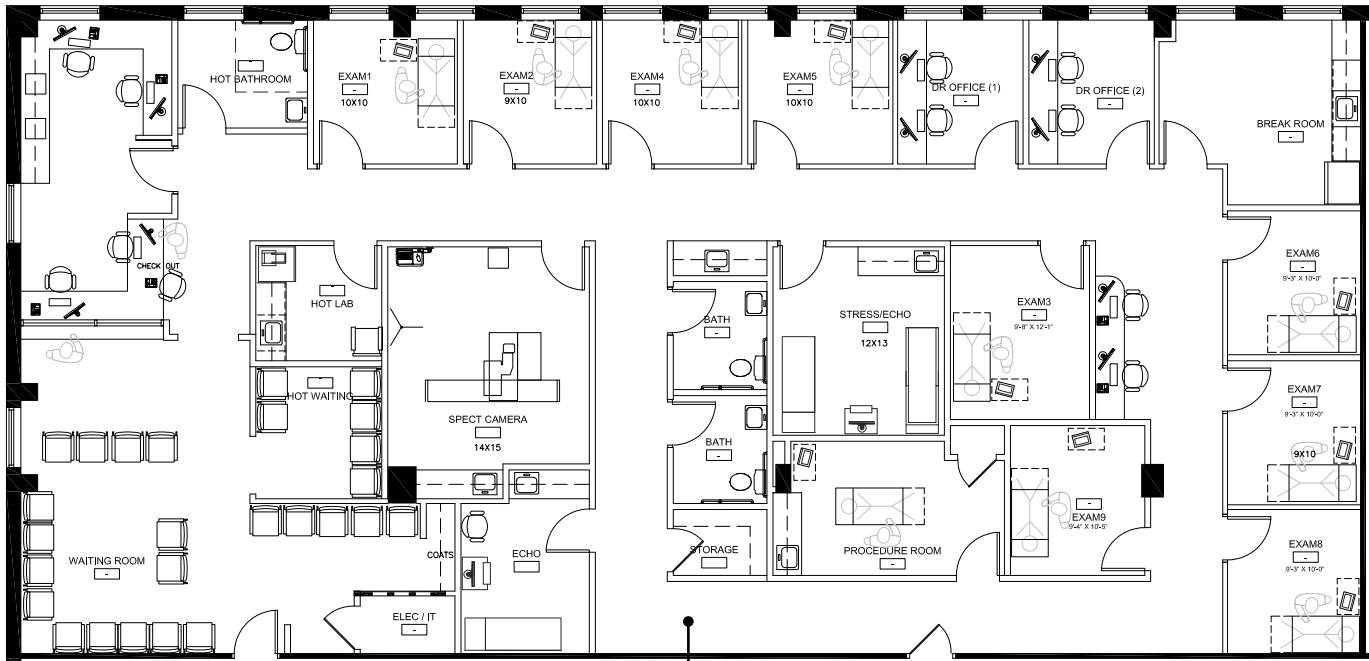
996 Old Eagle School Road
Suite 1117
Wayne, PA 19087

(610) 989-0300 Tel
(610) 989-0234 Fax
www.geisrealty.com

No warranty or representation, express or implied, is made as to the accuracy of the information contained herein, and the same is submitted subject to errors, omissions, change of price, rental or other conditions, prior sale, lease or financing, or withdrawal without notice, and of any special listing conditions imposed by our principals no warranties or representations are made as to the condition of the property or any hazards contained therein are any to be implied.

824 Main Street

Phoenixville, PA 19460



Suite 201
5,186 RSF

For more information, please contact:



Adam Knox
aknox@geisrealty.com
(610) 989-0300

996 Old Eagle School Road
Suite 1117
Wayne, PA 19087

(610) 989-0300 Tel
(610) 989-0234 Fax
www.geisrealty.com

No warranty or representation, express or implied, is made as to the accuracy of the information contained herein, and the same is submitted subject to errors, omissions, change of price, rental or other conditions, prior sale, lease or financing, or withdrawal without notice, and of any special listing conditions imposed by our principals no warranties or representations are made as to the condition of the property or any hazards contained therein are any to be implied.