



K. KAM GHANDEHARI DDS
**RANCHO BERNARDO
DENTAL ARTS**
16810

16816

16810-16816 BERNARDO CENTER DRIVE

San Diego , CA 92128

± 1,108 - 3,743 SF
MEDICAL OFFICE/RETAIL SPACES FOR LEASE

CESAR MAMASIG

Sales & Leasing Associate
(619) 204-6532
Cesar@PacificCoastCommercial.com
Lic. 02148312

COLTON SPEAS

Senior Advisor
(858) 598-2873
Colton@PacificCoastCommercial.com
Lic. 02062812

PACIFIC COAST COMMERCIAL

10721 Treena Street, Suite 200
San Diego, CA 92131
www.PacificCoastCommercial.com
Lic. 01209930



PROPERTY FEATURES



Overview
2-Story Medical Office Building
Elevator Served



Availability
16810 Bernardo Center Drive, Suite B
± 1,108 SF
Lease Rate: \$1.60/SF + NNN

16816 Bernardo Center Drive, Suite 100
± 3,743 SF
Lease Rate: Contact Agent



Location
Convenient Freeway Access to I-15
Providing Excellent Regional Connectivity



Parking Ratio
5.35/1,000 SF



Amenities
Close Proximity to Restaurants, Retail
Centers, & Daily Amenities

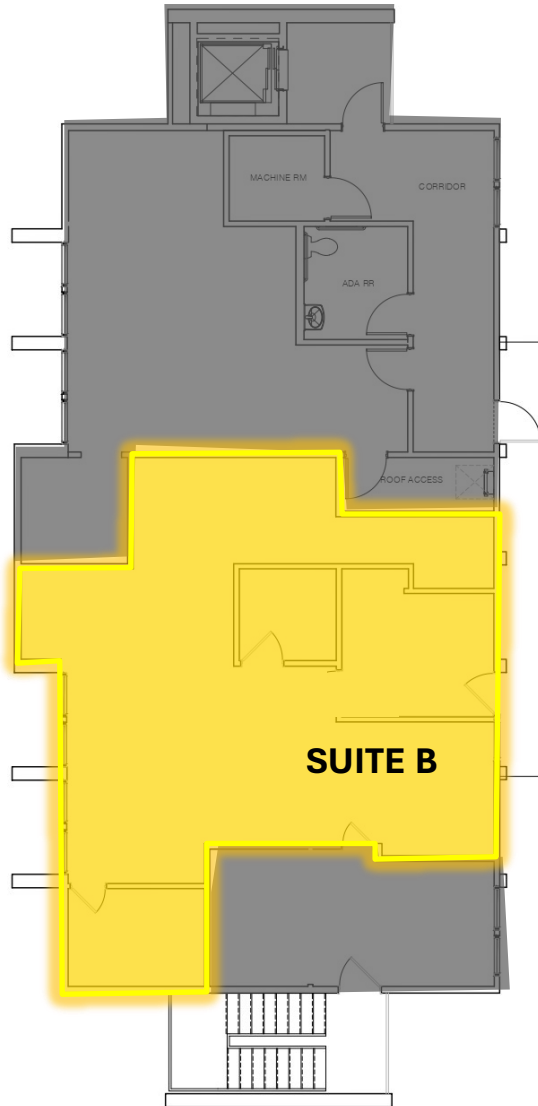
16810-16816 BERNARDO CENTER DR

San Diego, CA 92128

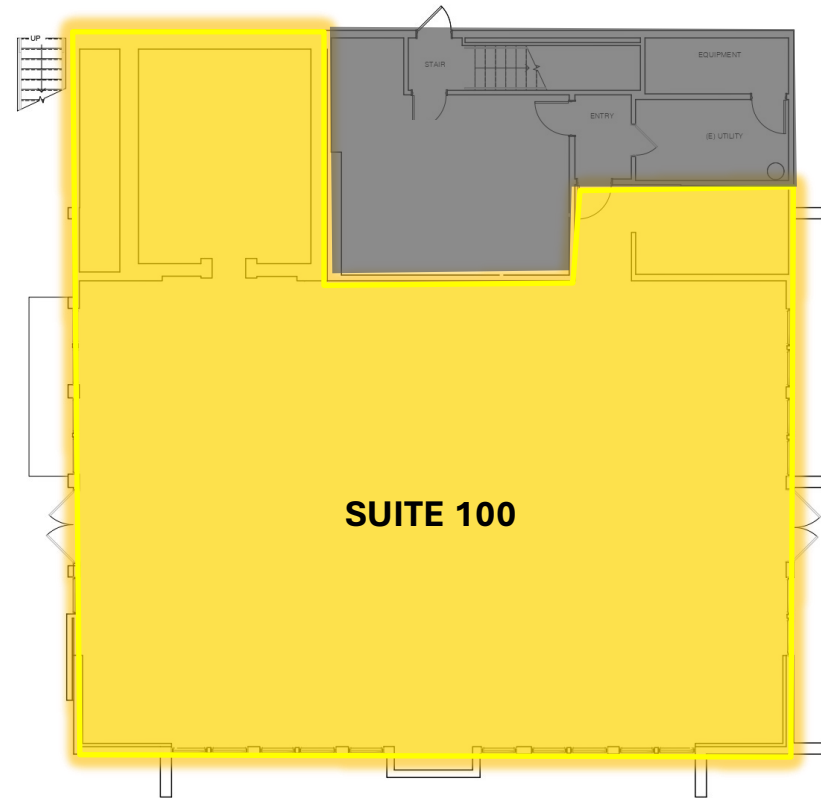


FLOOR PLAN

▶ **16810 Bernardo Center Drive, Suite B**
± 1,108 SF
Lease Rate: \$1.60/SF + NNN



▶ **16816 Bernardo Center Drive, Suite 100**
± 3,743 SF
Lease Rate: Contact Agent





** Photos shown are representative of the property and may not depict the exact suites available.

NEARBY AMENITIES



WESTWOOD CLUB



RANCHO BERNARDO INN & GOLF COURSE

RANCHO BERNARDO SWIM & TENNIS CLUB



BERNARDO CENTER DRIVE



NEARBY HOSPITALS

- Sharp Rees-Stealy Rancho Bernardo
- Palomar Medical Center Poway
- Palomar Medical Center Escondido

DISTANCE DRIVE TIME

Hospital	Distance	Drive Time
Sharp Rees-Stealy Rancho Bernardo	1.2 Mile	7 Min
Palomar Medical Center Poway	2.7 Miles	8 Min
Palomar Medical Center Escondido	9.4 Miles	12 Min



86,167 \$177,485 44.1

Population (3 Mile) Avg HH Income (3 Mile) Age (3 Mile)

CONTACT INFORMATION



CESAR MAMASIG

Sales & Leasing Associate
(619) 204-6532
Cesar@PacificCoastCommercial.com
Lic. 02148312

COLTON SPEAS

Senior Advisor
(858) 598-2873
Colton@PacificCoastCommercial.com
Lic. 02062812

PACIFIC COAST COMMERCIAL

10721 Treena Street, Suite 200
San Diego, CA 92131
www.PacificCoastCommercial.com
Lic. 01209930



The information in this brochure is provided for general marketing purposes only and is believed to be reliable but not guaranteed. Interested parties should verify all details independently, including zoning, measurements, and property condition. The property owner and agents make no warranties or representations and reserve the right to change or withdraw the property or terms at any time without notice. This is not an offer or contract.