

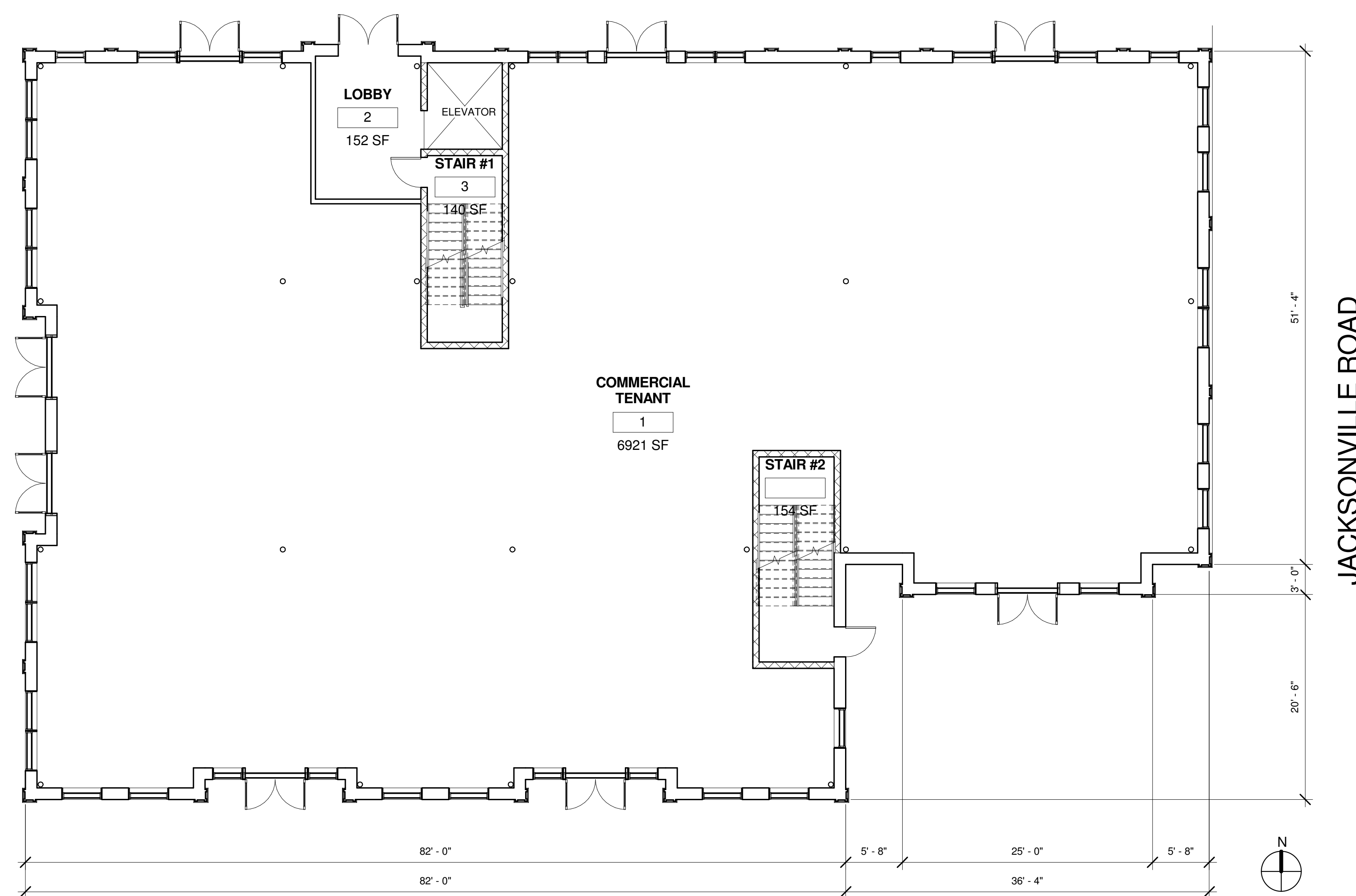


**Jarmel Kizel**

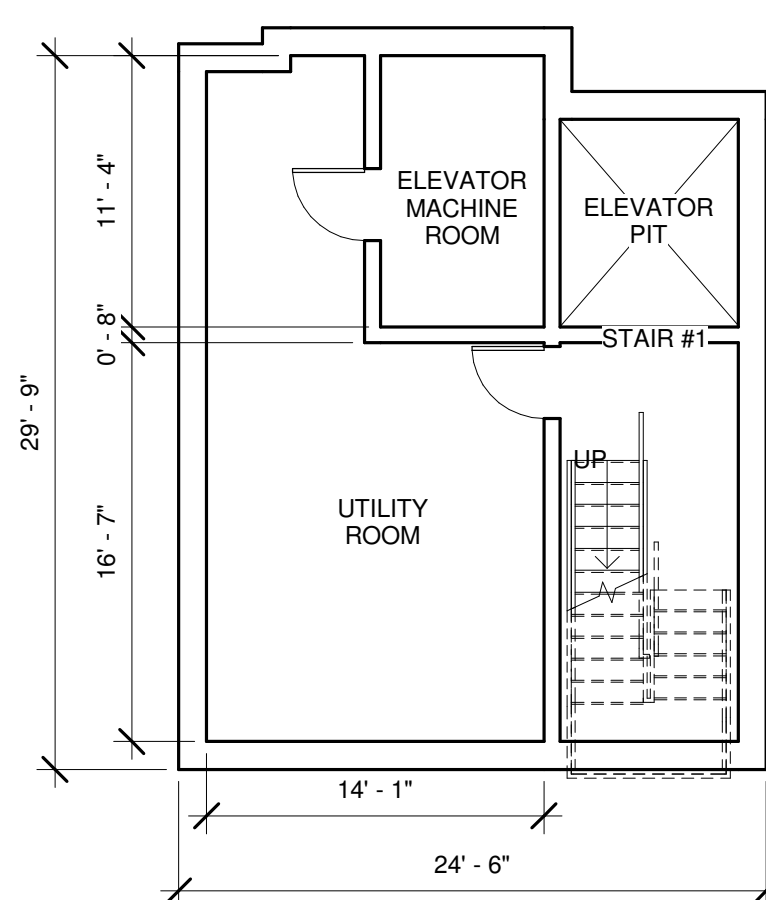
ARCHITECTS AND ENGINEERS INC.  
42 OKNER PARKWAY  
LIVINGSTON, NEW JERSEY 07039  
TEL: 973-994-9669  
FAX: 973-994-4069

www.jarmelkizel.com

Architecture  
Engineering  
Interior Design  
Implementation Services



1 FIRST FLOOR PLAN  
1/8" = 1'-0"



2 BASEMENT PLAN  
1/8" = 1'-0"

**ISSUE**

NO.	DATE	DESCRIPTION	INT.
1	5/20/14	REVISED PER TOWNSHIP COMMENTS	MBJ

**REVISION**

NO.	DATE	DESCRIPTION	INT.
-----	------	-------------	------

**PRINCIPALS**

MATTHEW R. JARMEL, AIA, MBA	AZ LJC 48139	NI LJC A1812787
	CO LJC ARC-401483	MI LJC 1301052189
	DC LJC ARC-101849	MO LJC 46404
	DE LJC S5-6007256	NC LJC 10120
	FL LJC AS94034	ND LJC 3501
	GA LJC RA011484	NY LJC 025673
	IA LJC 05557	OH LJC A-9912444
	IL LJC 00102069	PA LJC RA-014851-B
	MA LJC AR10206	TN LJC 103850
	MD LJC 1262	TX LJC 20992
		VA LJC 0401 014089
		VT LJC 2453
IRWIN H. KIZEL, AIA, PP	CT LJC 08522	NI LJC 21A100794700
		NI LJC PP LJC 33L00243100

**RICHARD A. JARMEL, PE**

	CT LJC PEN0027735	NI LJC 37491
	FL LJC 70134	MN LJC 47482
	MI LJC 6201652339	NY LJC 0738898-1
	DE LJC 18754	PA LJC PE070600
	VT LJC 88498	MA LJC 50445

**ASSOCIATES**

RONALD A. BROKENHIRE, PE	NI LJC GB45511
DAVID L. LESSEN, RA	NI LJC GB45511
	NY LJC 024719

NI State Board of Architects Authorization No. 161  
NJ State Board of Engineers & Land Surveyors Authorization No. GA-278177  
10/03/2013

**Project:** NEW CONSTRUCTION AT  
BLOCK 40, LOT 30.03 IN MONTVILLE  
TWP., NEW JERSEY, MORRIS COUNTY  
FOR LASALA DEVELOPMENT, INC.

**Project Number:** LASALA-S-13-247 **Scale:** AS NOTED

**Drawn By:** FAA **Approved By:** MBJ

**Drawing Name:**  
**FIRST FLOOR PLAN**

**Drawing Number:**

**A-100**

**Initial Date:**