

# For Sale

156 Strawberry Plains Road Suites C & D  
Williamsburg, Virginia 23185



**For Additional Information Please Contact**



**Vince Campana**

1313 Jamestown Road Suite 201

Williamsburg, Virginia 23185

[www.CWCREW.net](http://www.CWCREW.net)

**757.209.2990**

# For Sale

156 Strawberry Plains Road Suites C & D  
Williamsburg, Virginia 23185

**Location:** 156 Strawberry Plains Road Suite C & D Williamsburg, Virginia 23185

**Description:** This offering consists of two condominiums for sale! Both condos are located on the second floor with elevator and stair well access. Suite C is currently vacant and ready for immediate use. Suite D has a long-standing tenant in place. Each suite is laid out as an office for a wide array of business uses. The condominiums are conveniently located in the heart of Williamsburg, Virginia near New Town, High Street, and the College of William & Mary. These are must see suites!

**Parking:** There is ample shared parking for the building!

**Suite Sizes:** Suite C – 2,282 Square Feet.  
Suite D – 2,188 Square Feet.

**Sale Prices:**

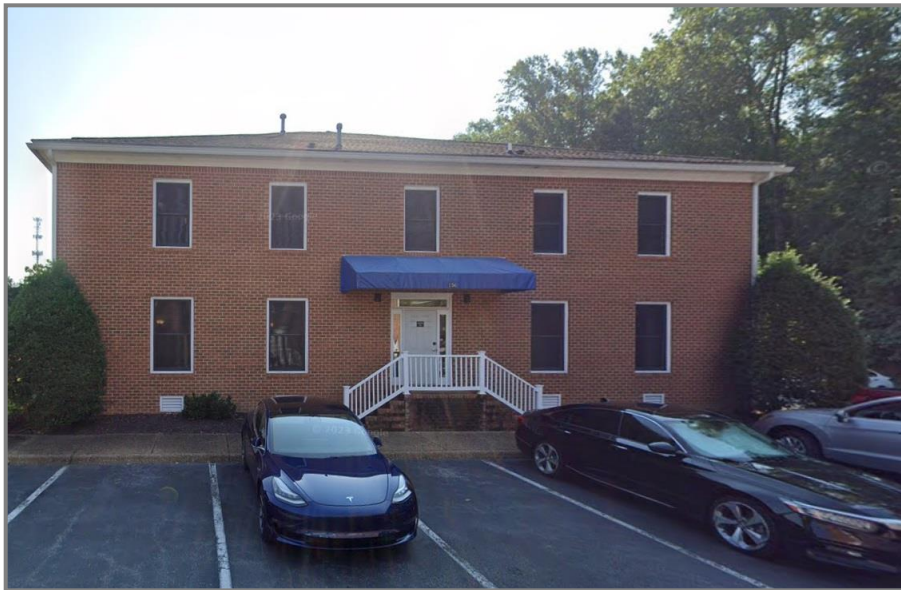
|         |              |
|---------|--------------|
| Suite C | \$276,000.00 |
| Suite D | \$265,000.00 |
| Both    | \$540,000.00 |



**Vince Campana**  
1313 Jamestown Road Suite 201  
Williamsburg, Virginia 23185  
[www.CampanaWaltz.com](http://www.CampanaWaltz.com)

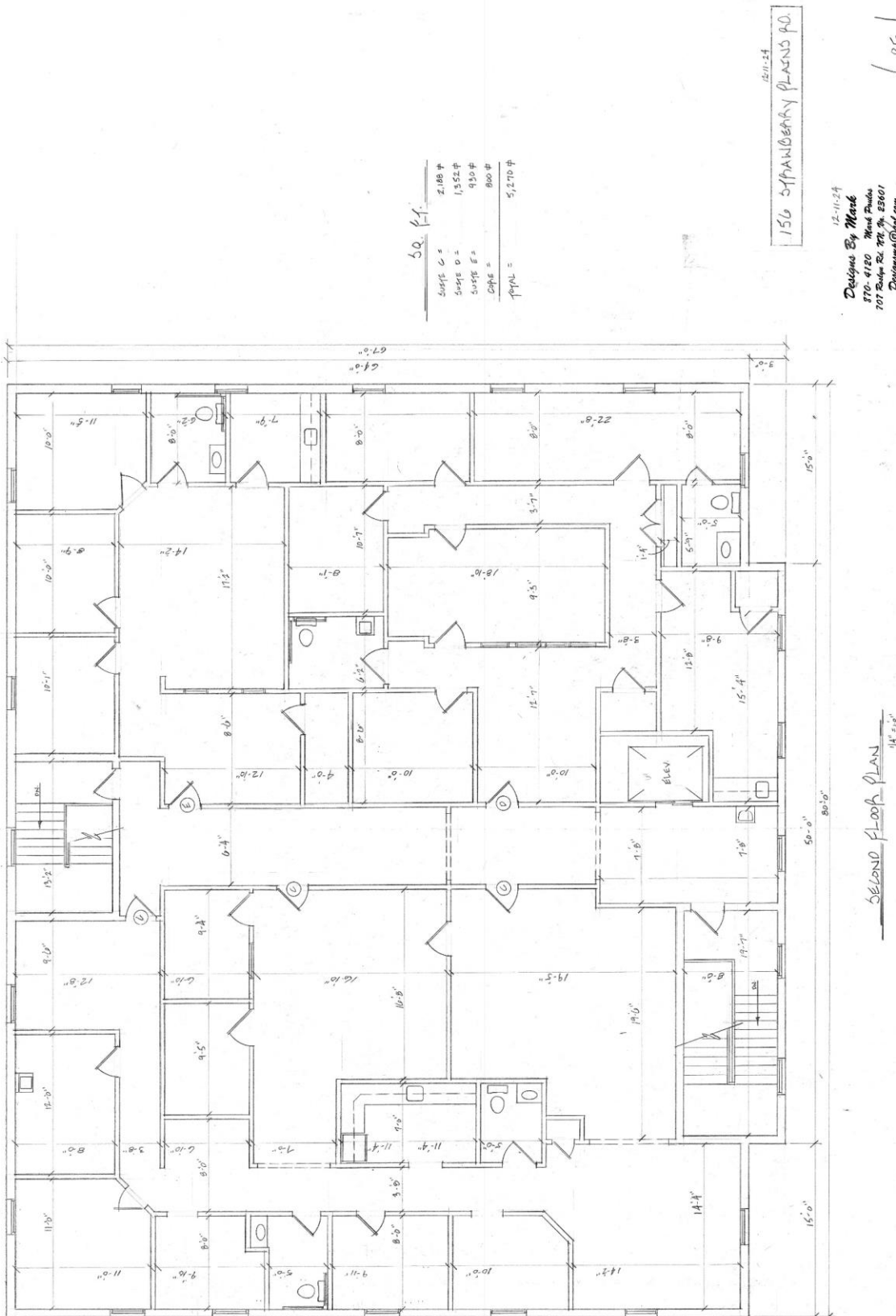
**757.209.2990**

# Building Photographs



*This information was obtained from sources deemed to be reliable, but is not warranted.  
This offer subject to errors and omissions, or withdrawal, without notice.*

# Building Dimensions



50.41

|          |         |
|----------|---------|
| SUSP C = | 2,188 # |
| SUSP D = | 1,552 # |
| SUSP E = | 920 #   |
| CPRE =   | 800 #   |
| TOTAL =  | 5,270 # |

156 STRANDBERRY PLAINS RD.  
12-11-24

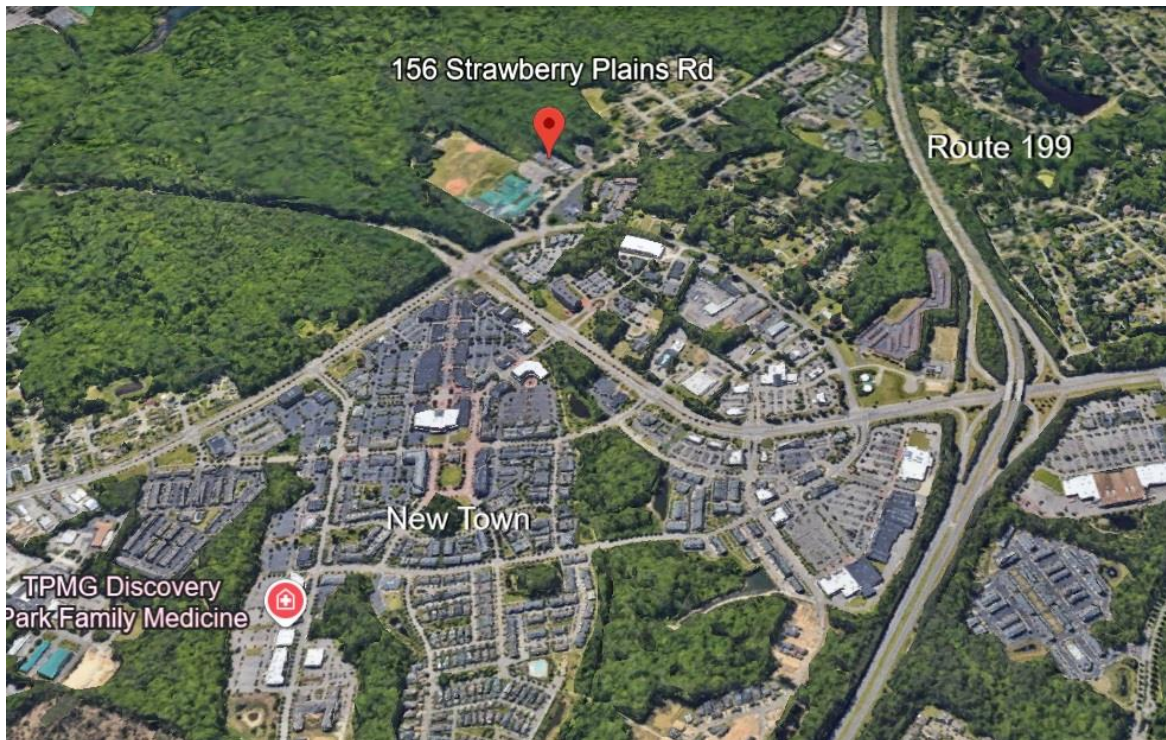
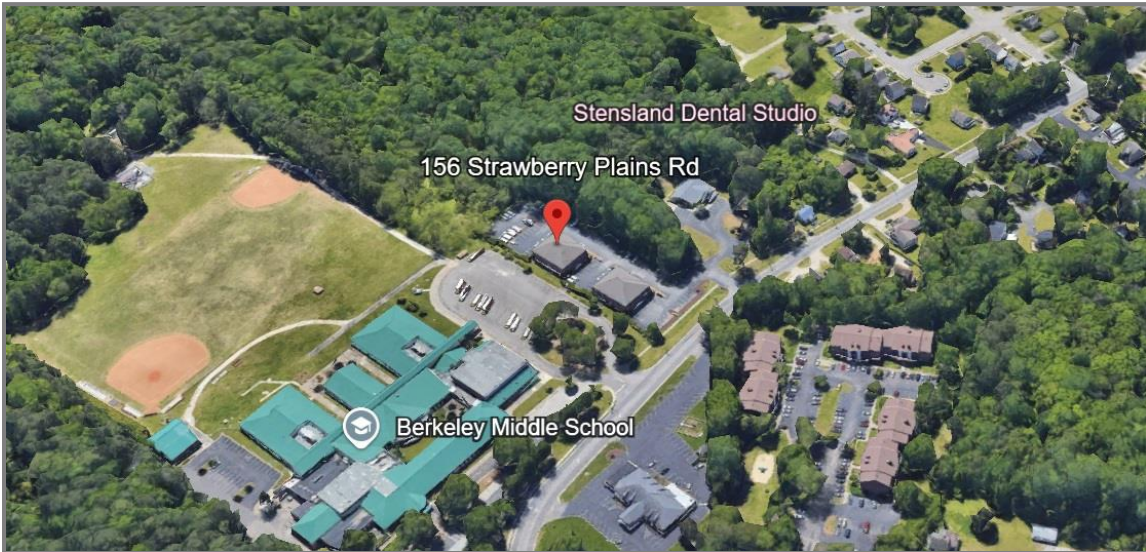
12-11-24  
Designs By Mark  
870-4120 Wood Park  
707 Baker Rd. RR #4 23601  
Designs@dbm.com

1 of 1

SECOND FLOOR PLAN  
14'-0"

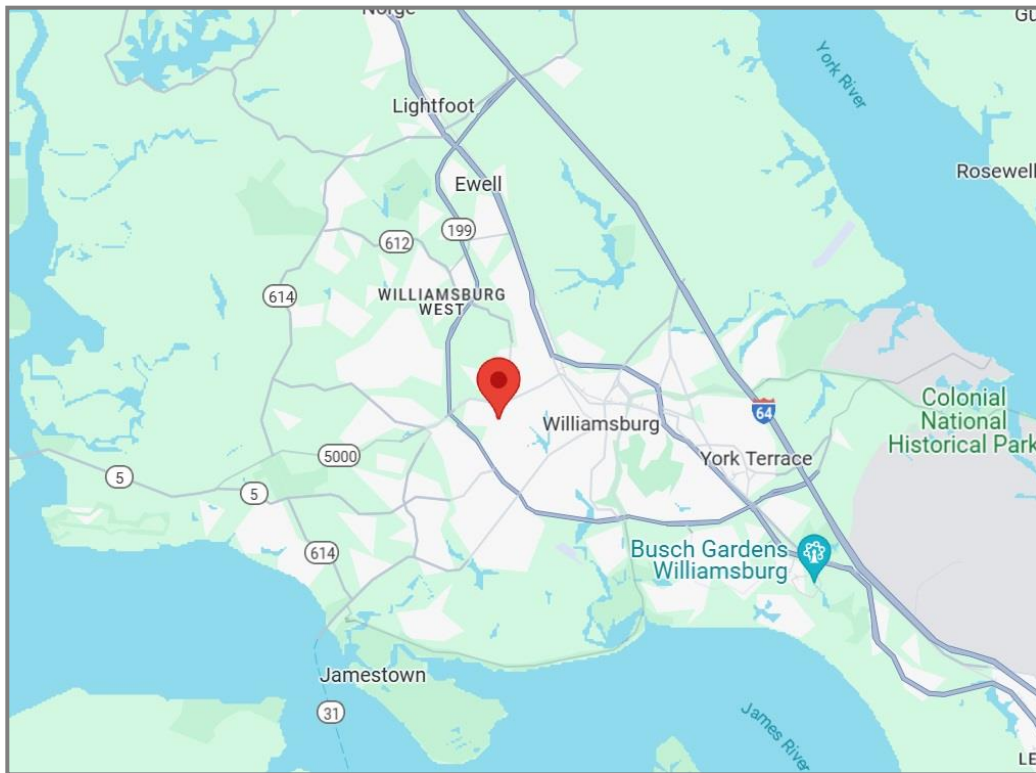
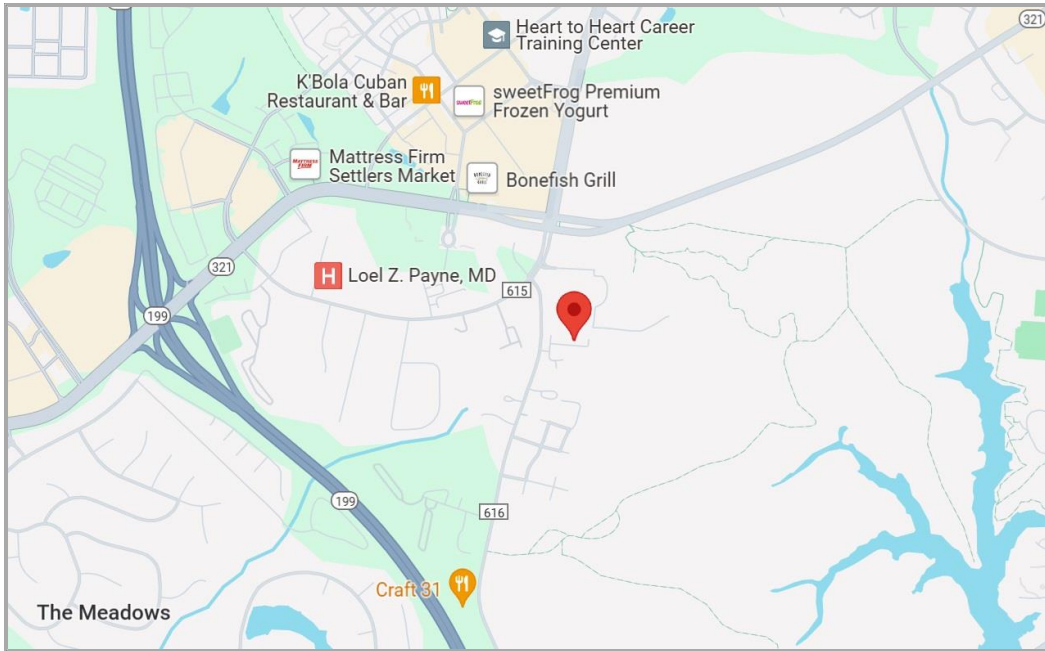
This information was obtained from sources deemed to be reliable, but is not warranted.  
This offer subject to errors and omissions, or withdrawal, without notice.

# Aerial



*This information was obtained from sources deemed to be reliable, but is not warranted.  
This offer subject to errors and omissions, or withdrawal, without notice.*

# Maps



*This information was obtained from sources deemed to be reliable, but is not warranted.  
This offer subject to errors and omissions, or withdrawal, without notice.*