

21845 DRAKE RD

Strongsville, OH 44149



CONNOR KROUSE

216.282.0125

ckrouse@lee-associates.com

ABRAM SCHWARZ, SIOR

216.282.2210

aschwarz@lee-associates.com

3601 Green Road, Suite 320, Beachwood, OH 44122 | 216.282.0100 | www.lee-associates.com/cleveland/

We obtained the information above from sources we believe to be reliable. However, we have not verified its accuracy and make no guarantee, warranty or representation about it. It is submitted subject to the possibility of errors, omissions, change of price, rental or other conditions, prior sale, lease or financing, or withdrawal without notice. We include projections, opinions, assumptions or estimates for example only, and they may not represent current or future performance of the property. You and your tax and legal advisors should conduct your own investigation of the property and transaction.

PROPERTY SUMMARY



PROPERTY DESCRIPTION

This 46,478 square foot manufacturing facility is offered for sale on Drake Road, within the established Strongsville Business & Technology Park. The building includes approximately 4,700 square feet of well-appointed office space featuring a reception area, private offices, a conference room, and dedicated lab space. The property is well-suited for a range of industrial users, with an interior truck dock equipped with two dock-high doors, and a drive-through bay featuring two oversized drive-in doors measuring approximately 20 feet wide by 16 feet high. In addition, the facility offers two more drive-in doors measuring 14' x 14' and 14' x 16'. With clear heights ranging from 20 to 30 feet, this building is ideal for manufacturing, warehousing, or light industrial operations. The facility sits on 4 acres, providing ample space for parking, storage, or potential expansion.

OFFERING SUMMARY

Sale Price:	\$3,253,460
Lot Size:	4 Acres
Building Size:	46,478 SF

We obtained the information above from sources we believe to be reliable. However, we have not verified its accuracy and make no guarantee, warranty or representation about it. It is submitted subject to the possibility of errors, omissions, change of price, rental or other conditions, prior sale, lease or financing, or withdrawal without notice. We include projections, opinions, assumptions or estimates for example only, and they may not represent current or future performance of the property. You and your tax and legal advisors should conduct your own investigation of the property and transaction.

PROPERTY HIGHLIGHTS

- Tanks and lines **CURRENTLY BEING REMOVED** by current owner prior to a sale
- Includes 4,700 SF of office space with reception, private offices, conference room, and lab space
- Interior/covered truck area with two (2) dock-high doors
- Drive-through bay with two (2) oversized drive-in doors (approx. 20' wide x 16' high)
- Two (2) additional drive-in doors (14' x 14' and 14' x 16')
- Clear height ranges from 20' to 30'
- Sits on 4 acres – ample space for parking, storage, or expansion
- Ideal for an owner user manufacturing, warehousing, or light industrial operations
- Heavy Power - 1600 Amps, 480 V, 3 Phase
- Zoned General Industrial (GI) in the City of Strongsville

21845 DRAKE RD

Strongsville, OH 44149

ADDITIONAL PHOTOS



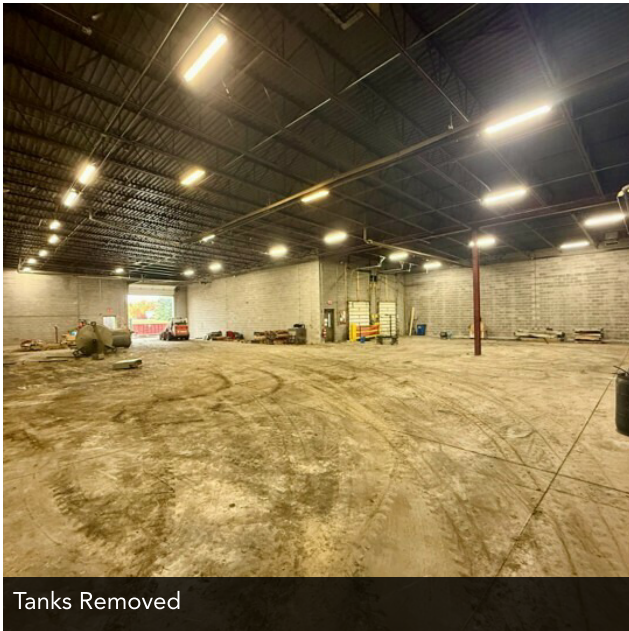
Office Area



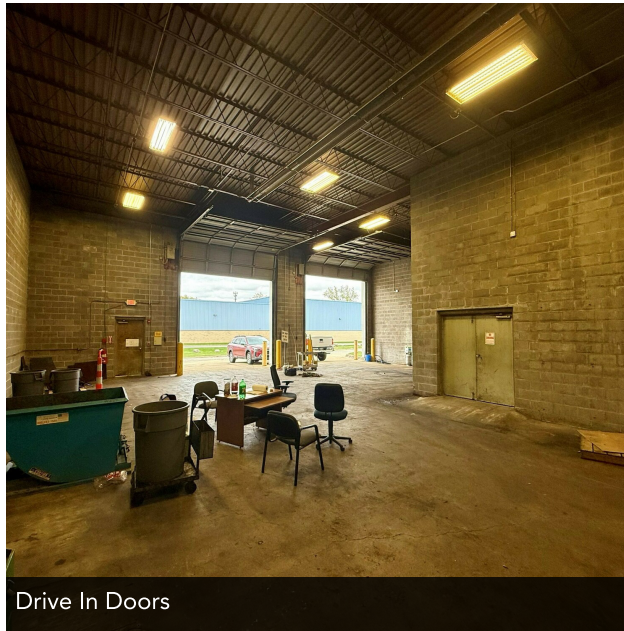
Main Area - Tanks Being Removed



Covered Docks



Tanks Removed



Drive In Doors



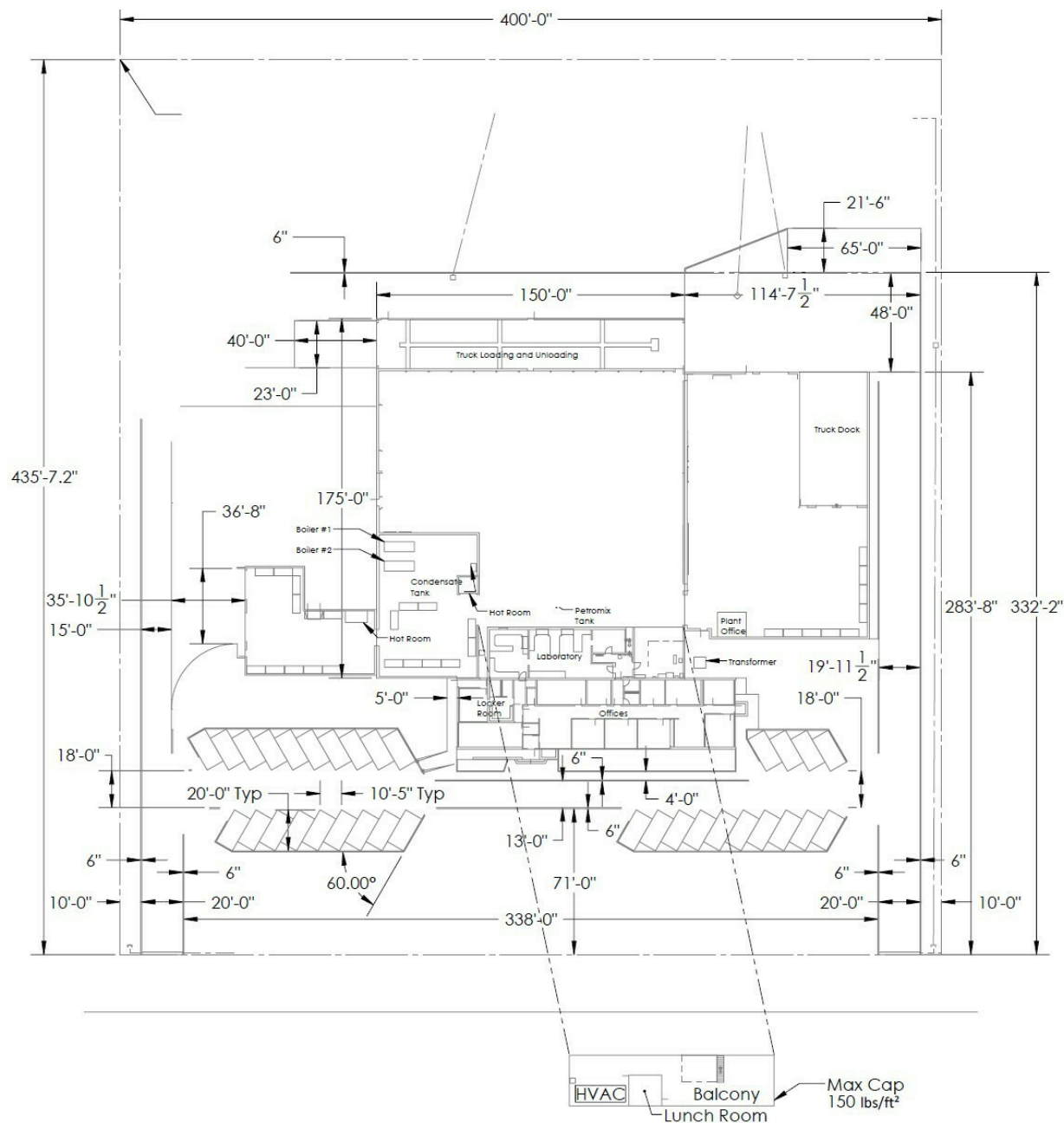
Tanks Being Removed

We obtained the information above from sources we believe to be reliable. However, we have not verified its accuracy and make no guarantee, warranty or representation about it. It is submitted subject to the possibility of errors, omissions, change of price, rental or other conditions, prior sale, lease or financing, or withdrawal without notice. We include projections, opinions, assumptions or estimates for example only, and they may not represent current or future performance of the property. You and your tax and legal advisors should conduct your own investigation of the property and transaction.

21845 DRAKE RD

Strongsville, OH 44149

FLOOR PLAN



We obtained the information above from sources we believe to be reliable. However, we have not verified its accuracy and make no guarantee, warranty or representation about it. It is submitted subject to the possibility of errors, omissions, change of price, rental or other conditions, prior sale, lease or financing, or withdrawal without notice. We include projections, opinions, assumptions or estimates for example only, and they may not represent current or future performance of the property. You and your tax and legal advisors should conduct your own investigation of the property and transaction.

21845 DRAKE RD

Strongsville, OH 44149

LOCATION MAP

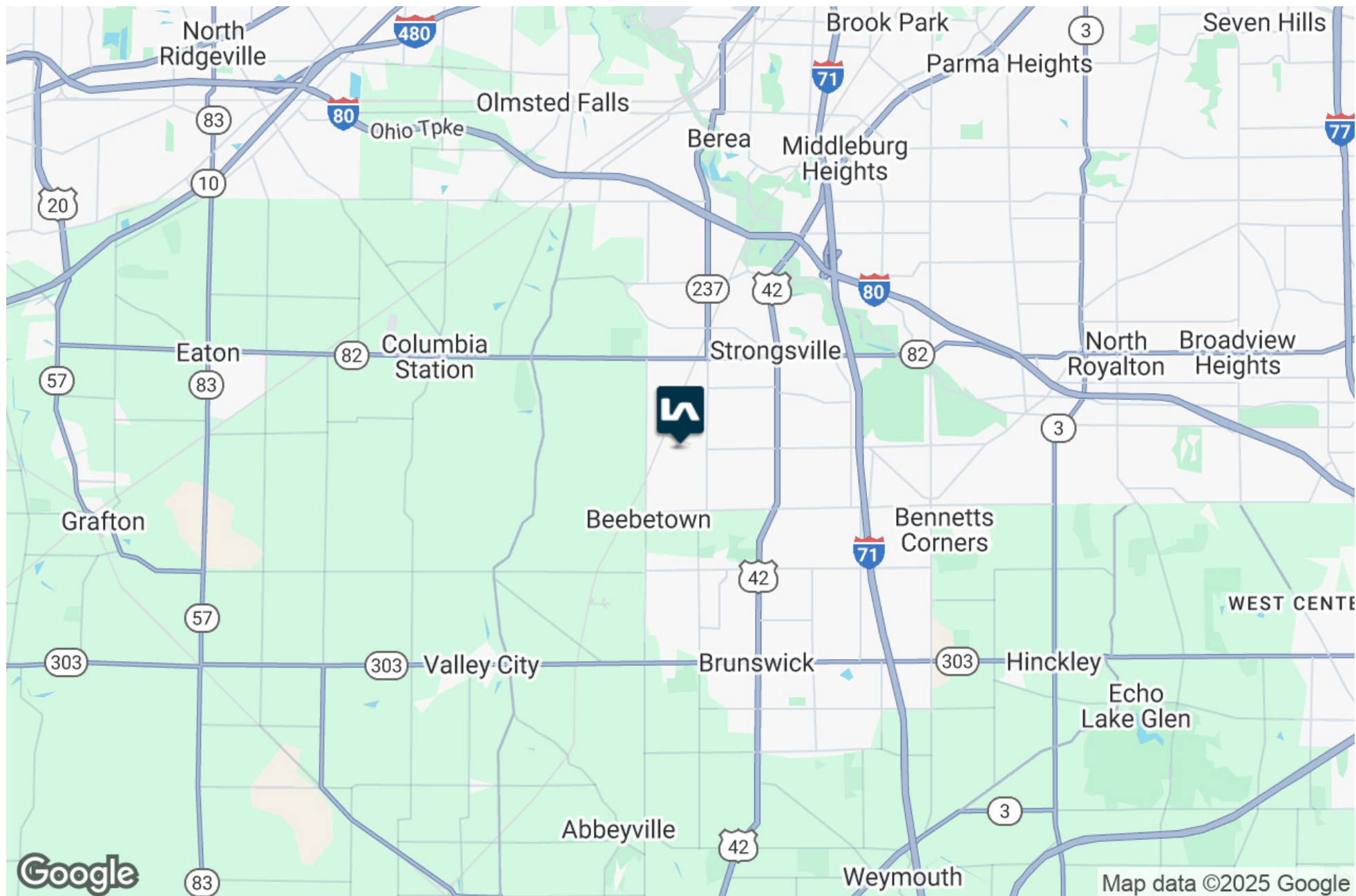


We obtained the information above from sources we believe to be reliable. However, we have not verified its accuracy and make no guarantee, warranty or representation about it. It is submitted subject to the possibility of errors, omissions, change of price, rental or other conditions, prior sale, lease or financing, or withdrawal without notice. We include projections, opinions, assumptions or estimates for example only, and they may not represent current or future performance of the property. You and your tax and legal advisors should conduct your own investigation of the property and transaction.

21845 DRAKE RD

Strongsville, OH 44149

LOCATION MAP



We obtained the information above from sources we believe to be reliable. However, we have not verified its accuracy and make no guarantee, warranty or representation about it. It is submitted subject to the possibility of errors, omissions, change of price, rental or other conditions, prior sale, lease or financing, or withdrawal without notice. We include projections, opinions, assumptions or estimates for example only, and they may not represent current or future performance of the property. You and your tax and legal advisors should conduct your own investigation of the property and transaction.

21845 DRAKE RD

Strongsville, OH 44149

For additional information, contact:

Abram Schwarz, SIOR

Partner

216.282.2210

aschwarz@lee-associates.com

Connor Krouse

Senior Associate

216.282.0125

ckrouse@lee-associates.com



3601 Green Road, Suite 320, Beachwood, OH 44122 | 216.282.0100 | www.lee-associates.com/cleveland/

We obtained the information above from sources we believe to be reliable. However, we have not verified its accuracy and make no guarantee, warranty or representation about it. It is submitted subject to the possibility of errors, omissions, change of price, rental or other conditions, prior sale, lease or financing, or withdrawal without notice. We include projections, opinions, assumptions or estimates for example only, and they may not represent current or future performance of the property. You and your tax and legal advisors should conduct your own investigation of the property and transaction.