



Flex Industrial FOR SALE

375 Robbins Drive
Troy, Michigan



- 14,880 SF Flex Space Available
- Efficient layout featuring ~10,000 SF warehouse and ~4,880 SF office
- Functional office layout suitable for sales, engineering, admin, or support teams
- Clean, well-maintained asset presenting strong operational readiness
- 12' clear height suited for storage, production, and material handling.
- Convenient grade-level loading with 10' x 11' overhead door and lift
- Premium access along I-75 with proximity to 14 Mile, 15 Mile, and I-696
- Strong labor pool access in Troy and surrounding markets
- Sale Price: \$1,650,000*

*Seller financing offered under the following illustrative terms: 30% down, 5-year term, 10-year amortization at 6% interest. These terms are indicative only and subject to change, negotiation, and seller's sole discretion based on buyer's financial qualifications and due diligence. Buyer and seller acknowledge that this does not constitute a binding offer of credit. Each party should obtain independent legal, financial, and tax advice regarding the structure, documentation, and implications of the transaction, including any applicable state and federal regulations. All property information provided is believed to be accurate but is not guaranteed; buyer to verify all details independently.

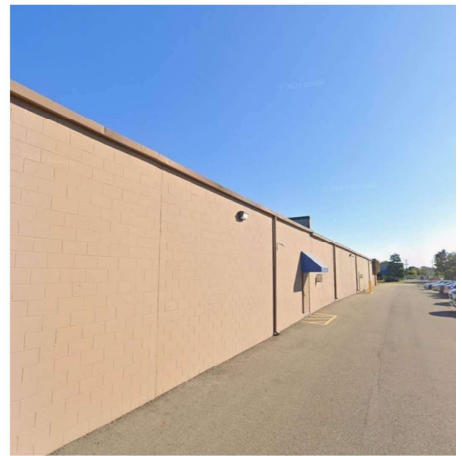
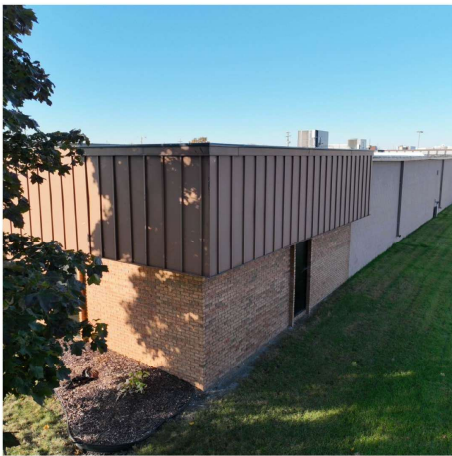
For more Information, please contact:

JASON GOELDE

(313) 246-2770

sales@375investments.com

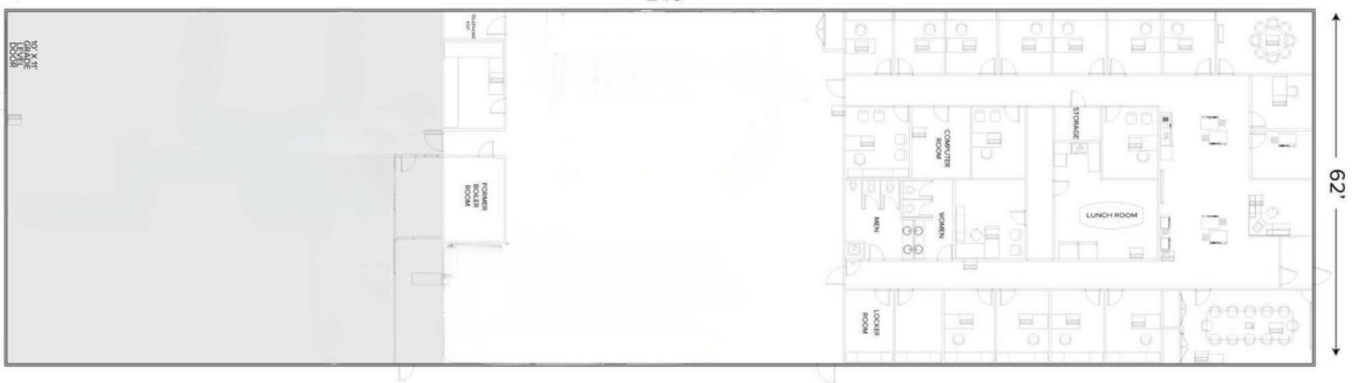
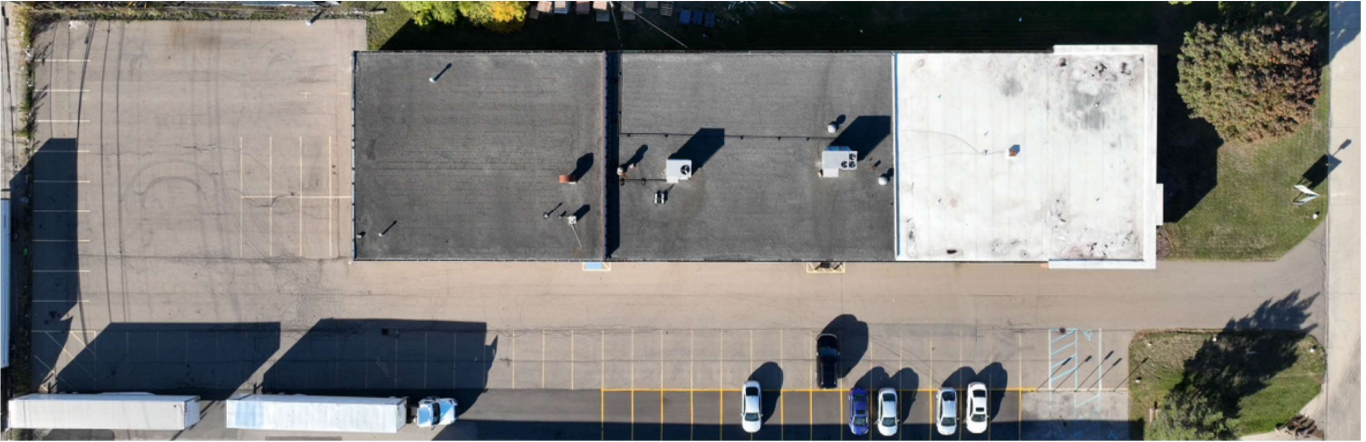
375 Robbins Drive Troy Michigan



375 Robbins Drive Troy Michigan



Efficient layout with $\pm 10,000$ SF warehouse/flex space and $\pm 4,880$ SF office for operation-driven users

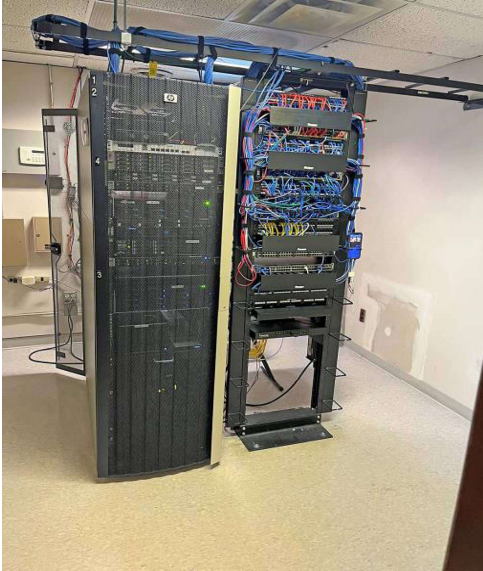


375 Robbins Drive Troy Michigan

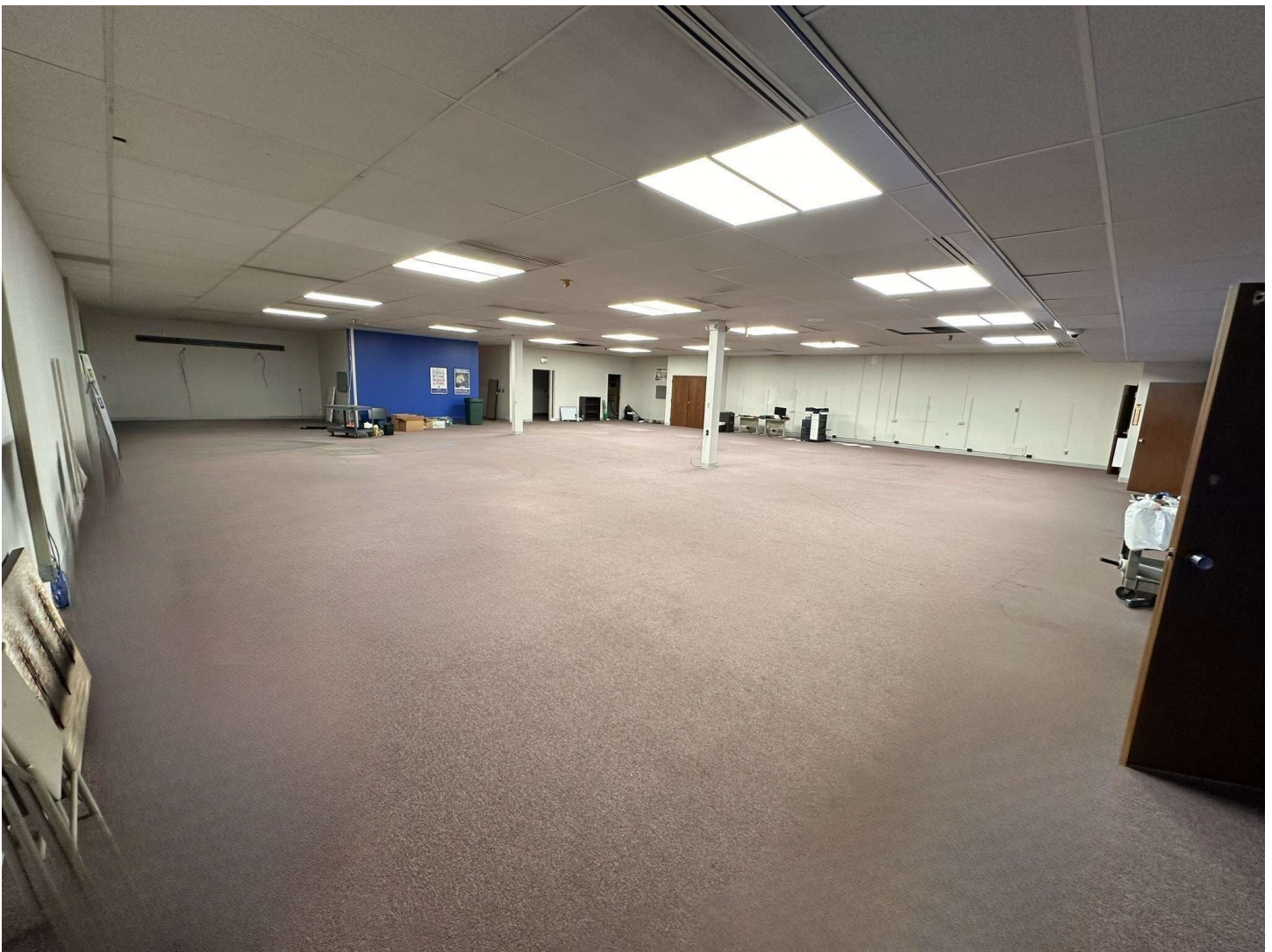


Functional 4880 SF
Office Layout
suitable for sales,
engineering,
administrative or
support teams.

375 Robbins Drive
Troy Michigan



Flex Space – Production
capable workspace



Jason Goelde (313) 246-2770 Sales@375investments.com

375 Robbins Drive
Troy Michigan



Warehouse for light industrial footprint with grade-level loading with 10' x 11' overhead door and Lift to streamline logistics.

