

3000 HEIGHTS ROAD ALIQUIPPA, PENNSYLVANIA

3000 Heights Road // Aliquippa, PA // 15001



10K SF BUILDING (1.45 AC) AVAILABLE FOR LEASE OR GROUND LEASE



PROXIMITY TO



1.4 Miles



1.5 Miles



36 Mins to Downtown Pittsburgh



10 Mins to Pittsburgh Int'l Airport



14 Mins to Beaver Valley Mall

DEMO SNAPSHOT

3 MILE RADIUS

\$68,092

Median Household Income

10,487 ADT

Brodhead Road

34,221

Population

14,722

Households

10,913 ADT

Gringo Road

26,835

Daytime Population

42

Median Age

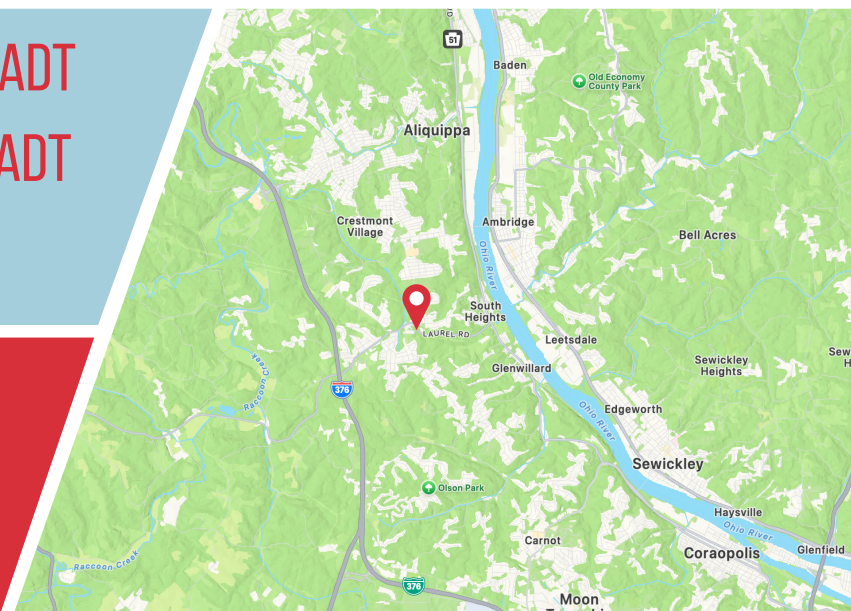
FOR LEASING INTEREST AND INQUIRIES, CONTACT:

MARK MCCALL

412.850.5365 // MMCCALL@ECHORETAIL.COM

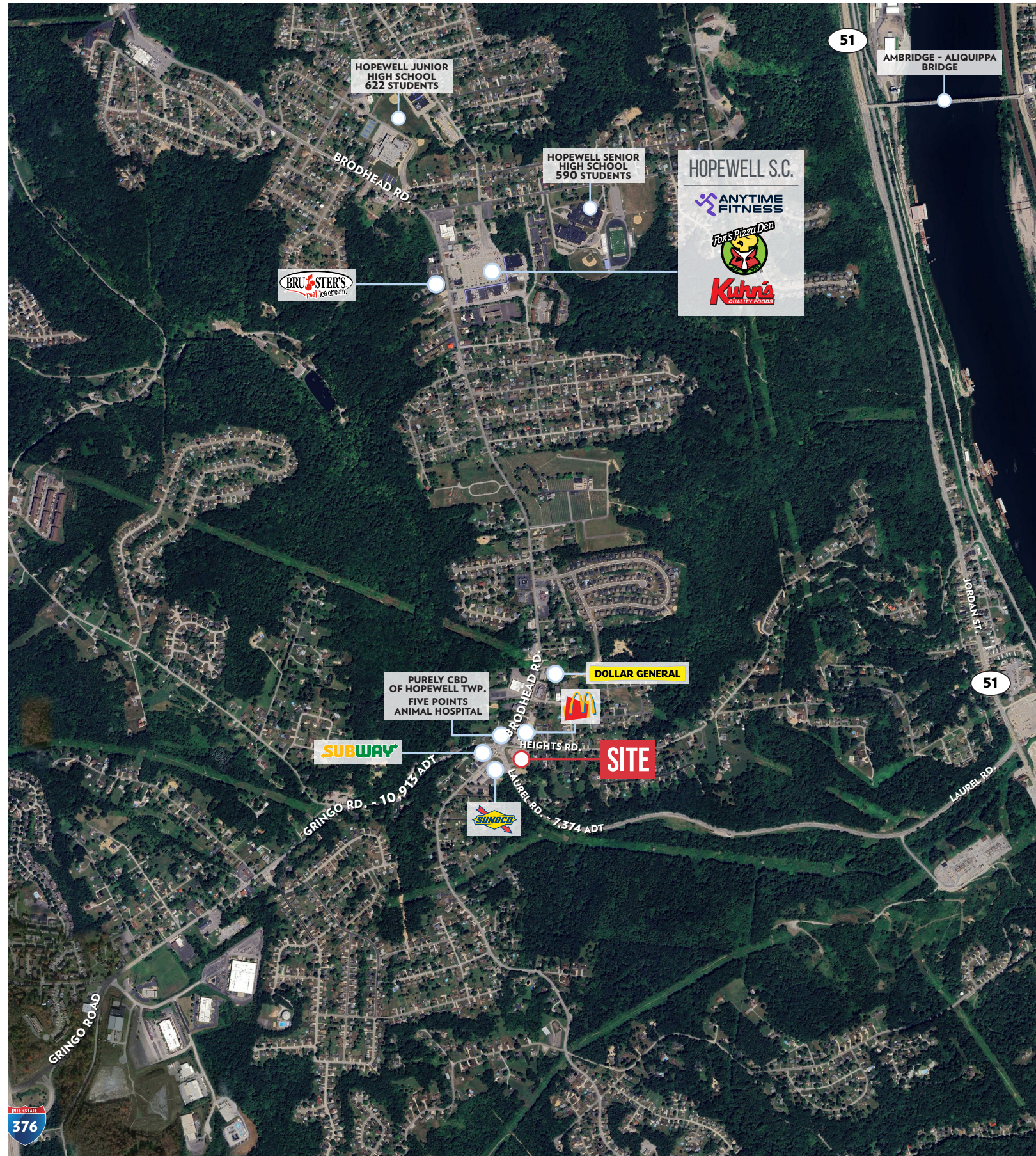
FOR MORE INFORMATION, VISIT:

ECHORETAIL.COM



3000 HEIGHTS ROAD ALIQUIPPA, PENNSYLVANIA

3000 Heights Road // Aliquippa, PA // 15001



HOPEWELL JUNIOR
HIGH SCHOOL
622 STUDENTS

HOPEWELL SENIOR
HIGH SCHOOL
590 STUDENTS

HOPEWELL S.C.

ANYTIME
FITNESS



PURELY CBD
OF HOPEWELL TWP.
FIVE POINTS
ANIMAL HOSPITAL

DOLLAR GENERAL



SUBWAY

SITE



51

AMBRIDGE - ALIQUIPPA
BRIDGE

51

INTERSTATE
376