



+/-24,000 SF FORMER VIRGINIA COLLEGE SPACE

920 Cedar Lake Rd, Biloxi, MS 39532

SCOTT DELANO • PRINCIPAL

OFFICE: 228.276.2700

MOBILE: 228.806.7418

sdelano@southeastcre.com



PROPERTY DESCRIPTION

Southeast Commercial is pleased to offer the +/-24,000 SF former Virginia College space available FOR LEASE in the well-situated Cedar Pops Plaza shopping Center. This property is located at the northeast corner of Cedar Lake Road and Pops Ferry Road, less than 1/4 mile south of Interstate 10 (Exit 44) in Cedar Pops Plaza. Nearby tenants include AutoZone, Dollar General, El Satio, Slim Chickens, and more. This is an excellent retail corner with strong demographics. For more information, contact the listing agent.

OFFERING SUMMARY

Lease Rate:	\$10.00 SF/yr (NNN)
Available SF:	+/-24,000 SF

RETAIL PROPERTY FOR LEASE

PROPERTY SUMMARY



SOUTHEAST
COMMERCIAL
REAL ESTATE



+/-24,000 SF FORMER VIRGINIA COLLEGE SPACE

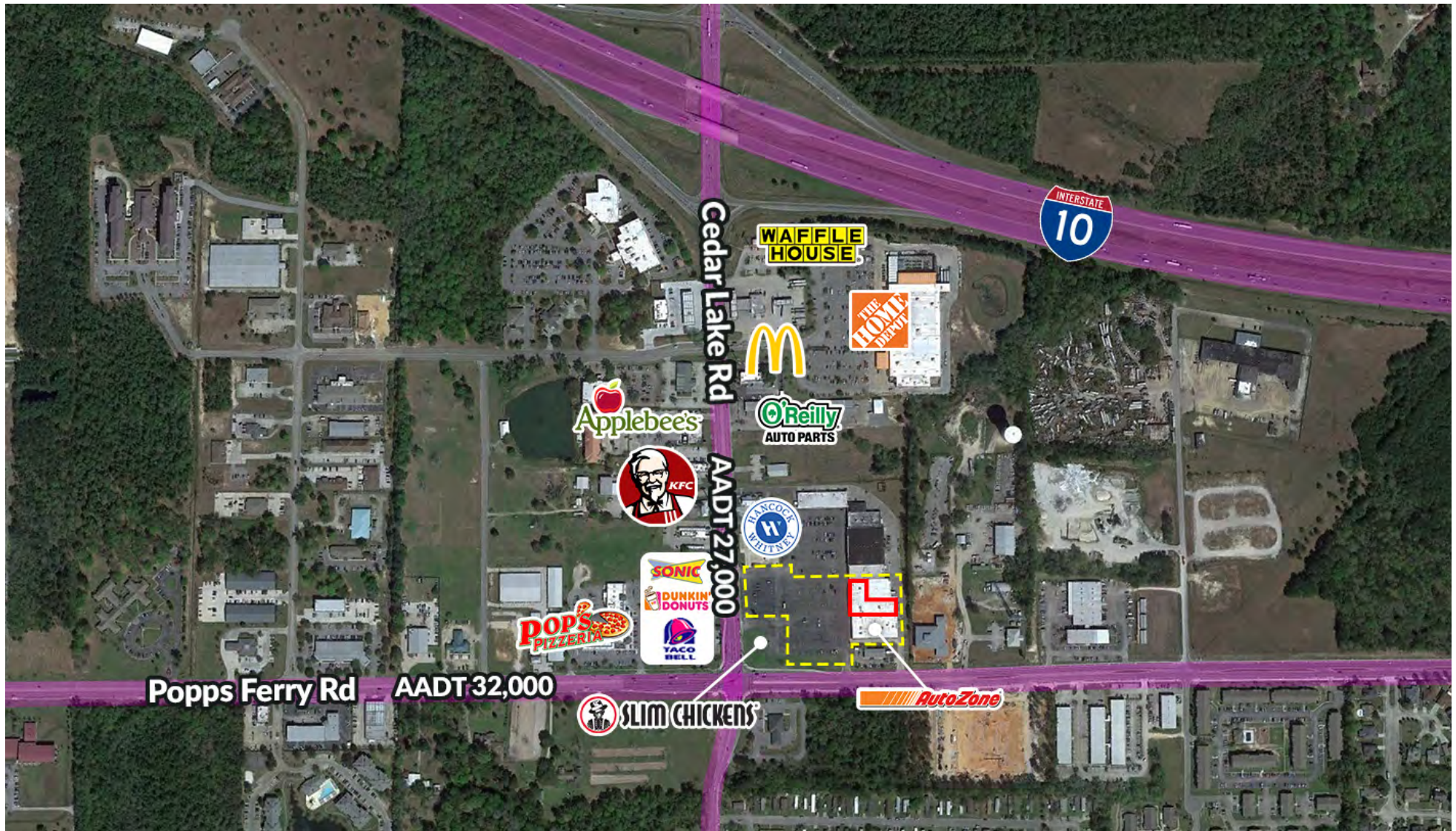
920 Cedar Lake Rd, Biloxi, MS 39532

SCOTT DELANO • PRINCIPAL

OFFICE: 228.276.2700

MOBILE: 228.806.7418

sdelano@southeastcre.com



RETAIL PROPERTY FOR LEASE

AERIAL



SOUTHEAST
COMMERCIAL
REAL ESTATE



+/-24,000 SF FORMER VIRGINIA COLLEGE SPACE

920 Cedar Lake Rd, Biloxi, MS 39532

SCOTT DELANO • PRINCIPAL

OFFICE: 228.276.2700

MOBILE: 228.806.7418

sdelano@southeastcre.com



RETAIL PROPERTY FOR LEASE

ADDITIONAL PHOTOS





+/-24,000 SF FORMER VIRGINIA COLLEGE SPACE

920 Cedar Lake Rd, Biloxi, MS 39532

SCOTT DELANO • PRINCIPAL

OFFICE: 228.276.2700

MOBILE: 228.806.7418

sdelano@southeastcre.com



\$79,383

Average Household Income within 15 minutes of site.



37.1

Median Age Within 15 minutes of site.



47,769

Number of housing units within 15 minutes of site.

2023 Demographics	5 Minutes	10 Minutes	15 Minutes
Population	6,686	34,207	107,110
Average HH Income	\$77,597	\$80,075	\$79,383
2028 Projections	5 Minutes	10 Minutes	15 Minutes
Population	7,106	35,192	108,716
Average HH Income	\$89,398	\$89,620	\$88,682

Travel Time to Site

- 5 Minutes
- 10 Minutes
- 15 Minutes

RETAIL PROPERTY FOR LEASE

AREA DEMOGRAPHICS



SOUTHEAST COMMERCIAL REAL ESTATE