

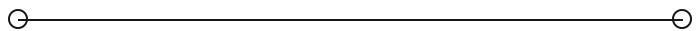


SALE / LEASE

351 Transfer Drive

351 TRANSFER DRIVE

Indianapolis, IN 46214



PROPERTY SUMMARY



360° VIRTUAL TOUR

OFFERING SUMMARY

SALE PRICE:	\$995,000
LEASE RATE:	\$10.00 SF/yr (NNN)
AVAILABLE SF:	10,086 SF
LOT SIZE:	1.78 Acres

QUENTYN CARPENTER

O: 317.843.8448

quentyn.carpenter@svn.com

IN #RB18001916

351 TRANSFER DRIVE | Indianapolis, IN 46214

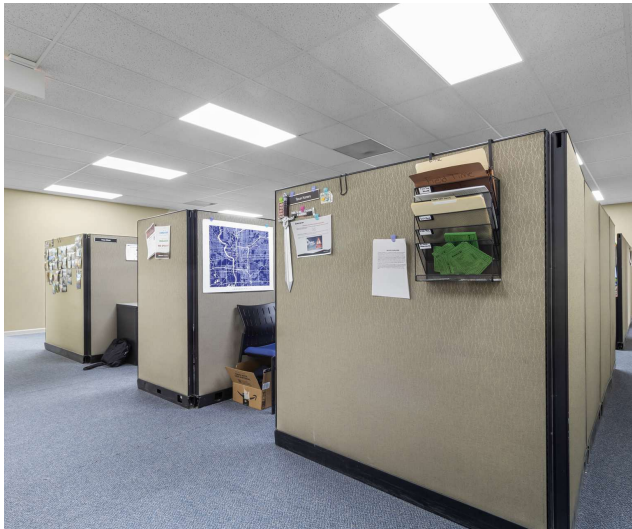
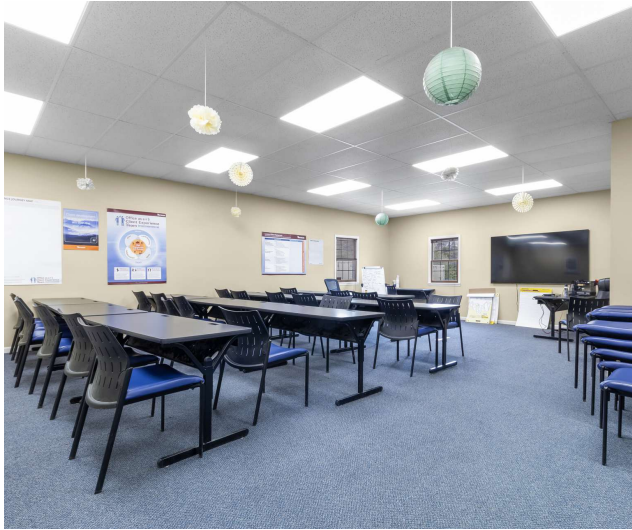
PROPERTY DESCRIPTION

SVN | Northern Commercial is pleased to present this Office/Lab property for Sale or for Lease. Located on the corner of Transfer Drive and New York Street, this building is 10,086 SF and has upper-level office and lower-level lab space. The property is zoned I-2 but has been approved for a wide variety of professional uses such as medical or dental offices, clinics, financial and insurance services, and office businesses professional or government.

PROPERTY HIGHLIGHTS

- First Level Office (5,083 SF) - Lower-Level Lab Space (5,083 SF)
- 1 Building Elevator
- 10 Private Offices and 1 Conference Room
- 42 Parking Spaces
- AVAILABLE FOR IMMEDIATE OCCUPANCY

ADDITIONAL PHOTOS



QUENTYN CARPENTER

O: 317.843.8448

quentyn.carpenter@svn.com

IN #RB18001916