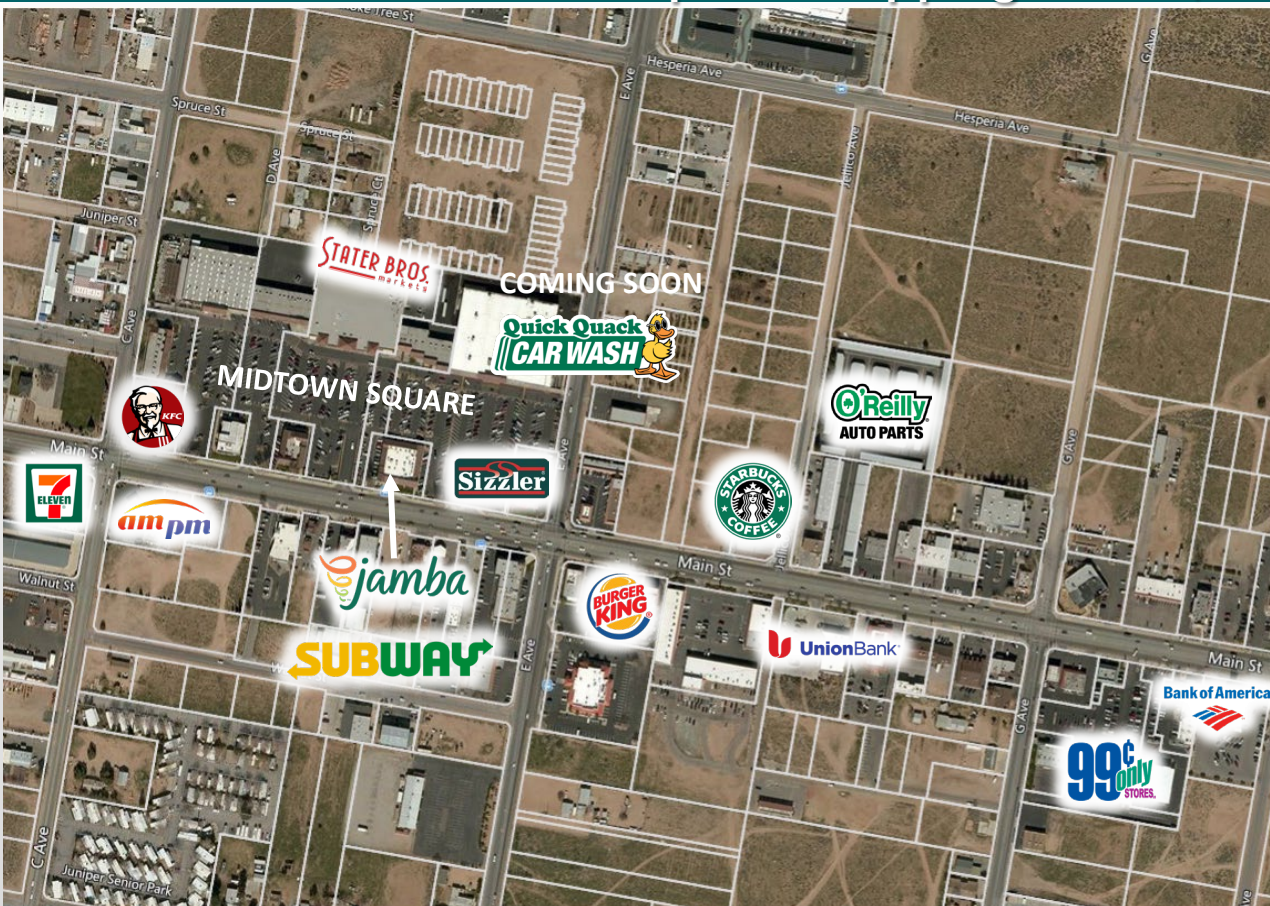


Prime Retail Space in a High-Traffic Stater Brothers Shopping Center!

Midtown Square Shopping Center, Hesperia, CA



Property Features

- 16922 Main St. - Suite K ±875 Sq. Ft Available
- 16808 Main St., Suite F ±3,000 Sq. Ft. Available
- Suite K offers an open floor plan with a single restroom
- Suite K is located in between Subway and to soon to open Jamba Juice
- Suite F is an endcap space built out as a hair salon that includes a massage room, small office, facial & waxing room, and break room
- Current Midtown Center tenants include Stater Bros., Sizzler, KFC, US Bank, Little Caesars, Subway, Wingstop and coming soon Jamba Juice
- Major East-West Corridor to and from I-15
- Located between two signalized corners
- Dominant Neighborhood Shopping Center with lots of foot traffic
- Surrounded by nearly ±59,757 households within a 3-mile radius with an average household income of \$77,175
- Schedule a tour today

Asking Rate: \$1.35 - 1.65 PSF + NNN

LIC # 01057618

The
BRADCO
Companies

a commercial real estate company

Joseph W. Brady CCIM, SIOR
PH. 760.951.5111 Ext 101 FAX. 760.951.5113
jbrady@thebradcocompanies.com

DRE LIC #00773589

P.O. Box 2710
Victorville, CA 92393

Connect with us on



NO WARRANTY, EXPRESS OR IMPLIED, IS MADE AS TO THE ACCURACY OF THE INFORMATION CONTAINED HEREIN. THIS INFORMATION IS SUBMITTED SUBJECT TO ERRORS, OMISSIONS, CHANGE OF PRICE, RENTAL OR OTHER CONDITIONS, WITHDRAWAL WITHOUT NOTICE, AND IS SUBJECT TO ANY SPECIAL LISTING CONDITIONS IMPOSED BY OUR PRINCIPAL, COOPERATING BROKERS, BUYERS, TENANTS AND OTHER PARTIES WHO RECEIVE THIS DOCUMENT SHOULD NOT RELY ON IT, BUT SHOULD USE IT AS A STARTING POINT OF ANALYSIS, AND SHOULD INDEPENDENTLY CONFIRM THE ACCURACY OF THE INFORMATION CONTAINED HEREIN THROUGH A DUE DILIGENCE REVIEW OF THE BOOKS, RECORDS, FILES AND DOCUMENTS THAT CONSTITUTE RELIABLE SOURCES OF THE INFORMATION DESCRIBED HEREIN. LOGOS ARE FOR IDENTIFICATION PURPOSES ONLY ANY MAY BE TRADEMARKS OF THEIR RESPECTIVE COMPANIES. JOSEPH W. BRADY INC., DBA THE BRADCO COMPANIES CA DRE LIC # 01057618

High Visibility Retail Suites Available For Lease

Midtown Square Shopping Center, Hesperia, CA



LIC # 01057618

The
BRADCO
Companies
a commercial real estate company

Joseph W. Brady CCIM, SIOR
PH. 760.951.5111 Ext 101 FAX. 760.951.5113
jbrady@thebradcocompanies.com

DRE LIC #00773589

P.O. Box 2710
Victorville, CA 92393

Connect with us on

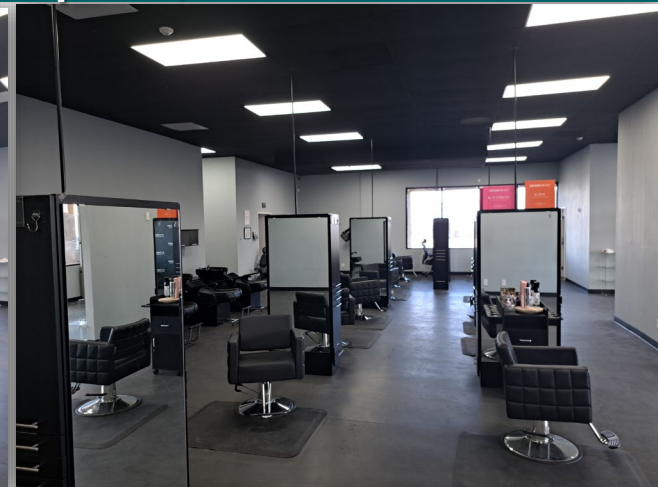
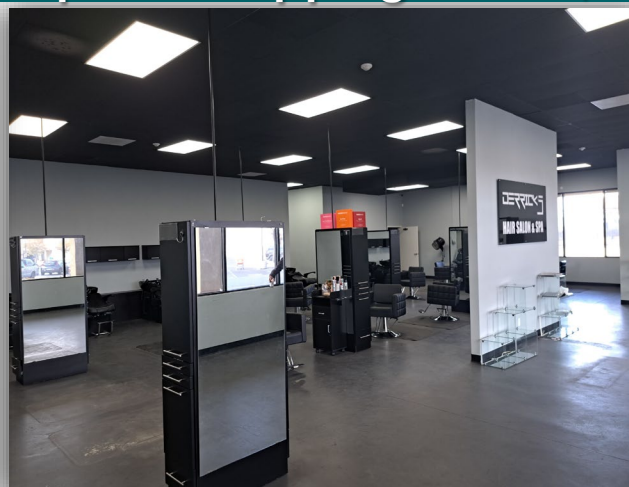


NO WARRANTY, EXPRESS OR IMPLIED, IS MADE AS TO THE ACCURACY OF THE INFORMATION CONTAINED HEREIN. THIS INFORMATION IS SUBMITTED SUBJECT TO ERRORS, OMISSIONS, CHANGE OF PRICE, RENTAL OR OTHER CONDITIONS, WITHDRAWAL WITHOUT NOTICE, AND IS SUBJECT TO ANY SPECIAL LISTING CONDITIONS IMPOSED BY OUR PRINCIPAL, COOPERATING BROKERS, BUYERS, TENANTS AND OTHER PARTIES WHO RECEIVE THIS DOCUMENT SHOULD NOT RELY ON IT, BUT SHOULD USE IT AS A STARTING POINT OF ANALYSIS, AND SHOULD INDEPENDENTLY CONFIRM THE ACCURACY OF THE INFORMATION CONTAINED HEREIN THROUGH A DUE DILIGENCE REVIEW OF THE BOOKS, RECORDS, FILES AND DOCUMENTS THAT CONSTITUTE RELIABLE SOURCES OF THE INFORMATION DESCRIBED HEREIN. LOGOS ARE FOR IDENTIFICATION PURPOSES ONLY ANY MAY BE TRADEMARKS OF THEIR RESPECTIVE COMPANIES. JOSEPH W. BRADY INC., DBA THE BRADCO COMPANIES CA DRE LIC # 01057618

High Visibility Retail Suites Available For Lease

Midtown Square Shopping Center, Hesperia, CA

Suite F



LIC # 01057618

The
BRADCO
Companies
a commercial real estate company

Joseph W. Brady CCIM, SIOR
PH. 760.951.5111 Ext 101 FAX. 760.951.5113
jbrady@thebradcocompanies.com

DRE LIC #00773589

P.O. Box 2710
Victorville, CA 92393

Connect with us on



NO WARRANTY, EXPRESS OR IMPLIED, IS MADE AS TO THE ACCURACY OF THE INFORMATION CONTAINED HEREIN. THIS INFORMATION IS SUBMITTED SUBJECT TO ERRORS, OMISSIONS, CHANGE OF PRICE, RENTAL OR OTHER CONDITIONS, WITHDRAWAL WITHOUT NOTICE, AND IS SUBJECT TO ANY SPECIAL LISTING CONDITIONS IMPOSED BY OUR PRINCIPAL, COOPERATING BROKERS, BUYERS, TENANTS AND OTHER PARTIES WHO RECEIVE THIS DOCUMENT SHOULD NOT RELY ON IT, BUT SHOULD USE IT AS A STARTING POINT OF ANALYSIS, AND SHOULD INDEPENDENTLY CONFIRM THE ACCURACY OF THE INFORMATION CONTAINED HEREIN THROUGH A DUE DILIGENCE REVIEW OF THE BOOKS, RECORDS, FILES AND DOCUMENTS THAT CONSTITUTE RELIABLE SOURCES OF THE INFORMATION DESCRIBED HEREIN. LOGOS ARE FOR IDENTIFICATION PURPOSES ONLY ANY MAY BE TRADEMARKS OF THEIR RESPECTIVE COMPANIES. JOSEPH W. BRADY INC., DBA THE BRADCO COMPANIES CA DRE LIC # 01057618