

TOAD MOUNTAIN

20705 W TOAD LAKE DRIVE OSAGE, MN 56570

PRICE

\$3,000,000.00

LOT SIZE

253 ACRES

LOCATION

Toad Mountain is an unparalleled Minnesota gem located on one of the most beautiful properties in the country. Toad Mountain offers the most priceless views a person can imagine. This slice of heaven property is engulfed with beautiful fields and forests with endless trails within, all while having over 920 feet of lakeshore on Toad Lake with two beautiful log cabins right on the lake along with a complimentary log shop just down the driveway on your way to your own private mountain! You won't find a property like this anywhere else in the country. A property one must see for oneself to truly grasp the beauty and stunning views Toad Mountain has to offer.



DAVID SCHLOSSMAN, CCIM

701.261.6161

david@horizonfargo.com

JACE ENGELSTAD

701.261.8061

jace@horizonfargo.com

FOR SALE

TOAD MOUNTAIN

FOR SALE | 20705 W TOAD LAKE DRIVE OSAGE, MN 56570



OFFERING SUMMARY

Sale Price:	\$3,000,000.00
Lot Size:	253 Acres
Lake Shore:	920 feet
Price / Acre:	\$15,790
Cabin 1:	512 SF
Cabin 2:	475 SF
Log Shop:	1,696 SF
Parcel Number(s):	33.0098.000 33.0094.000
Property Taxes(2023):	\$7,256.00
Toad Mountain Elevation:	1,762'

TOAD MOUNTAIN OVERVIEW

What this property has to offer, is truly found nowhere else in the country, providing unforgettable scenery and views with vistas that surpass the realm of imagination. Toad Mountain stands proudly as the highest mountain in Becker County at 1,762' and ranked 32 out of 175 lofty peaks in Minnesota, this land promises an unrivaled experience for nature enthusiasts and those seeking tranquility. This slice of paradise encompasses vast fields and verdant forests, adorned with a labyrinth of endless trails awaiting exploration. Adding to its allure, Toad Mountain proudly boasts over 920 feet of pristine lakeshore along spring fed Toad Lake. As you traverse the property, you'll discover two charming log cabins nestled right on the lakeshore on a large peninsula, perfectly harmonizing with the serene surroundings providing a buffer from neighboring properties. Furthermore, a complimentary log shop awaits just down the driveway, providing utmost convenience and comfort on your journey towards your private mountain retreat. Such a remarkable property, showcasing a harmonious blend of natural beauty and unparalleled peacefulness. To truly comprehend the sheer magnificence and awe-inspiring views that Toad Mountain offers, one must experience it firsthand.

DAVID SCHLOSSMAN, CCIM

701.261.6161

david@horizonfargo.com

JACE ENGELSTAD

701.261.8061

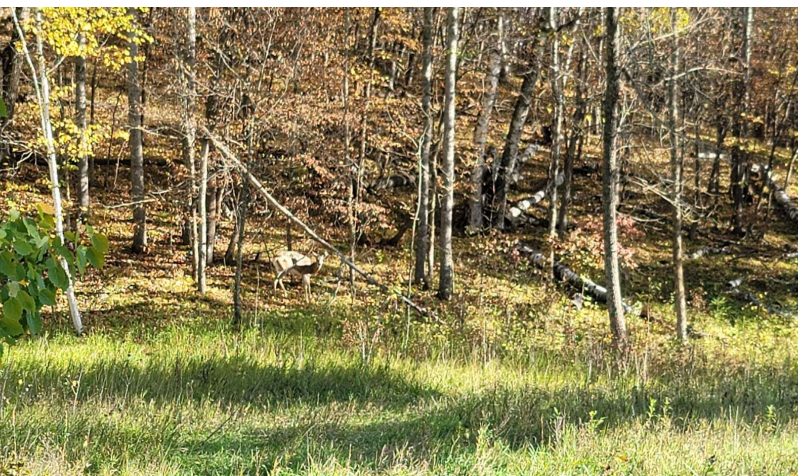
jace@horizonfargo.com



HORIZON
REAL ESTATE GROUP

TOAD MOUNTAIN

FOR SALE | 20705 W TOAD LAKE DRIVE OSAGE, MN 56570



PROPERTY HIGHLIGHTS

- Ranked as the highest mountain in Becker County that offers views that money cannot buy (until now)
- Endless land to develop your dream lake home or scenic mountain top vista.
- Two beautifully restored and heated log cabins right on Toad Lake
- Large log shop with 3/4 bathroom and laundry.
- Over 920 feet of lake shore on a peninsula providing seclusion from neighboring properties.
- Outdoor fenced corral with Ritchie automatic waterer, and loafing shed.
- Saloon and covered pavilion with drop with drop down screen doors
- Off-grid mountain cabin with gas heater (no plumbing)
- Endless walking paths and riding trails
- Beautiful forest areas with many of Minnesota's most iconic trees and scenery.
- This expansive property could host beautiful camps and resorts that contain lake activities, hiking, horseback riding, biking, hunting, bird watching, scenic viewing, and much more!
- Toad Mountain would fit an RV park or common interest community perfectly, with power and a well, conveniently located at the base of the mountain as well.
- Located closely to Smokey Hills State Park, another exciting nearby amenity for families and tourists.
- The lake shore parcel is zoned residential while the mountain side parcel is zoned commercial.

DAVID SCHLOSSMAN, CCIM

701.261.6161

david@horizonfargo.com

JACE ENGELSTAD

701.261.8061

jace@horizonfargo.com



HORIZON
REAL ESTATE GROUP

TOAD MOUNTAIN

FOR SALE | 20705 W TOAD LAKE DRIVE OSAGE, MN 56570



DAVID SCHLOSSMAN, CCIM

701.261.6161

david@horizonfargo.com

JACE ENGELSTAD

701.261.8061

jace@horizonfargo.com



HORIZON
REAL ESTATE GROUP

No warranty or representation, express or implied, is made to the accuracy or completeness of the information contained herein and same is submitted subject to errors, omissions, change of price, rental, or other conditions, withdrawal without notice and to any special listing conditions imposed by the property owner(s).

TOAD MOUNTAIN

FOR SALE | 20705 W TOAD LAKE DRIVE OSAGE, MN 56570



DAVID SCHLOSSMAN, CCIM

701.261.6161

david@horizonfargo.com

JACE ENGELSTAD

701.261.8061

jace@horizonfargo.com



HORIZON
REAL ESTATE GROUP

No warranty or representation, express or implied, is made to the accuracy or completeness of the information contained herein and same is submitted subject to errors, omissions, change of price, rental, or other conditions, withdrawal without notice and to any special listing conditions imposed by the property owner(s).

TOAD MOUNTAIN

FOR SALE | 20705 W TOAD LAKE DRIVE OSAGE, MN 56570



DAVID SCHLOSSMAN, CCIM

701.261.6161

david@horizonfargo.com

JACE ENGELSTAD

701.261.8061

jace@horizonfargo.com

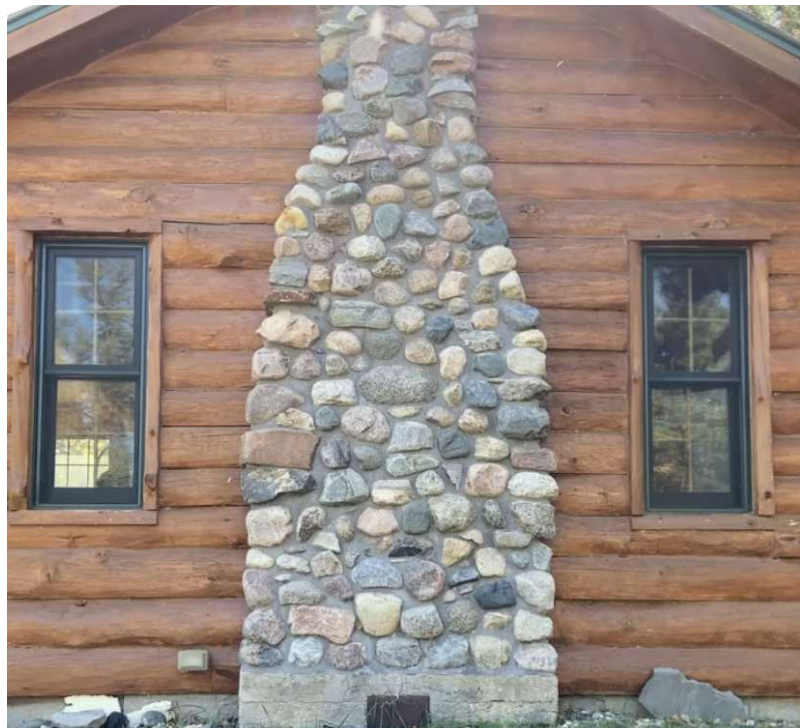


HORIZON
REAL ESTATE GROUP

No warranty or representation, express or implied, is made to the accuracy or completeness of the information contained herein and same is submitted subject to errors, omissions, change of price, rental, or other conditions, withdrawal without notice and to any special listing conditions imposed by the property owner(s).

TOAD MOUNTAIN

FOR SALE | 20705 W TOAD LAKE DRIVE OSAGE, MN 56570



DAVID SCHLOSSMAN, CCIM

701.261.6161

david@horizonfargo.com

JACE ENGELSTAD

701.261.8061

jace@horizonfargo.com

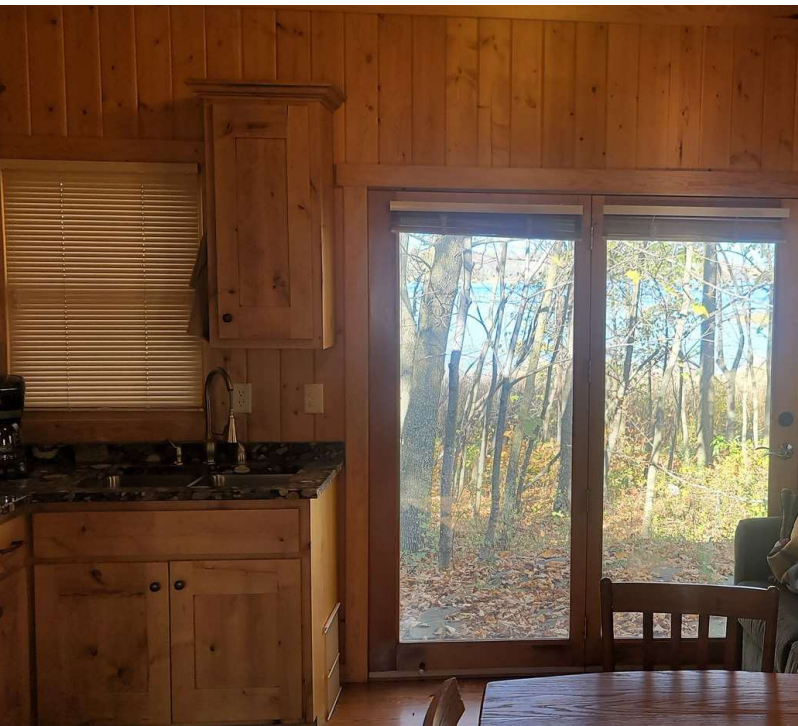


HORIZON
REAL ESTATE GROUP

No warranty or representation, express or implied, is made to the accuracy or completeness of the information contained herein and same is submitted subject to errors, omissions, change of price, rental, or other conditions, withdrawal without notice and to any special listing conditions imposed by the property owner(s).

TOAD MOUNTAIN

FOR SALE | 20705 W TOAD LAKE DRIVE OSAGE, MN 56570



DAVID SCHLOSSMAN, CCIM

701.261.6161

david@horizonfargo.com

JACE ENGELSTAD

701.261.8061

jace@horizonfargo.com



HORIZON
REAL ESTATE GROUP

No warranty or representation, express or implied, is made to the accuracy or completeness of the information contained herein and same is submitted subject to errors, omissions, change of price, rental, or other conditions, withdrawal without notice and to any special listing conditions imposed by the property owner(s).

TOAD MOUNTAIN

FOR SALE | 20705 W TOAD LAKE DRIVE OSAGE, MN 56570



DAVID SCHLOSSMAN, CCIM

701.261.6161

david@horizonfargo.com

JACE ENGELSTAD

701.261.8061

jace@horizonfargo.com

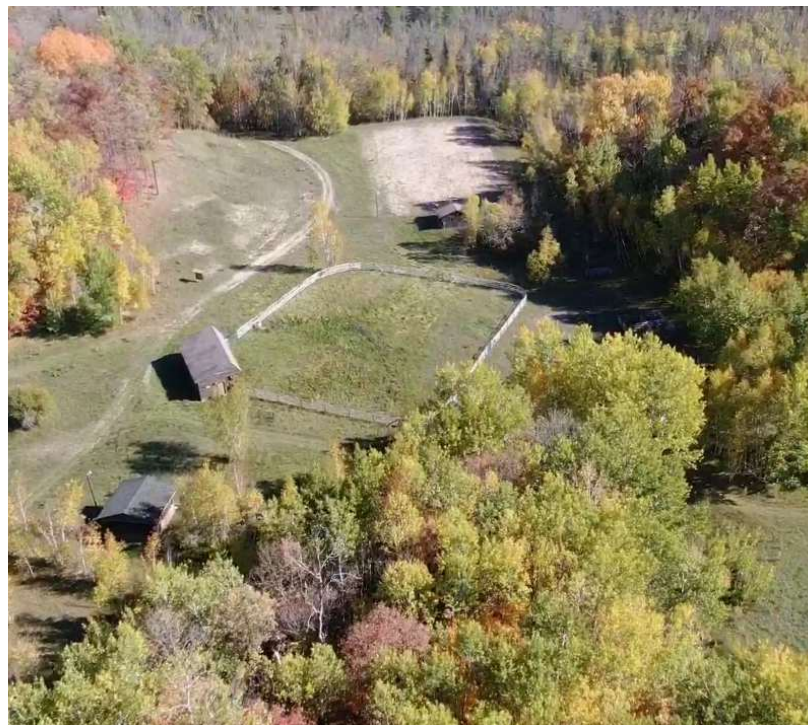


HORIZON
REAL ESTATE GROUP

No warranty or representation, express or implied, is made to the accuracy or completeness of the information contained herein and same is submitted subject to errors, omissions, change of price, rental, or other conditions, withdrawal without notice and to any special listing conditions imposed by the property owner(s).

TOAD MOUNTAIN

FOR SALE | 20705 W TOAD LAKE DRIVE OSAGE, MN 56570



DAVID SCHLOSSMAN, CCIM

701.261.6161

david@horizonfargo.com

JACE ENGELSTAD

701.261.8061

jace@horizonfargo.com

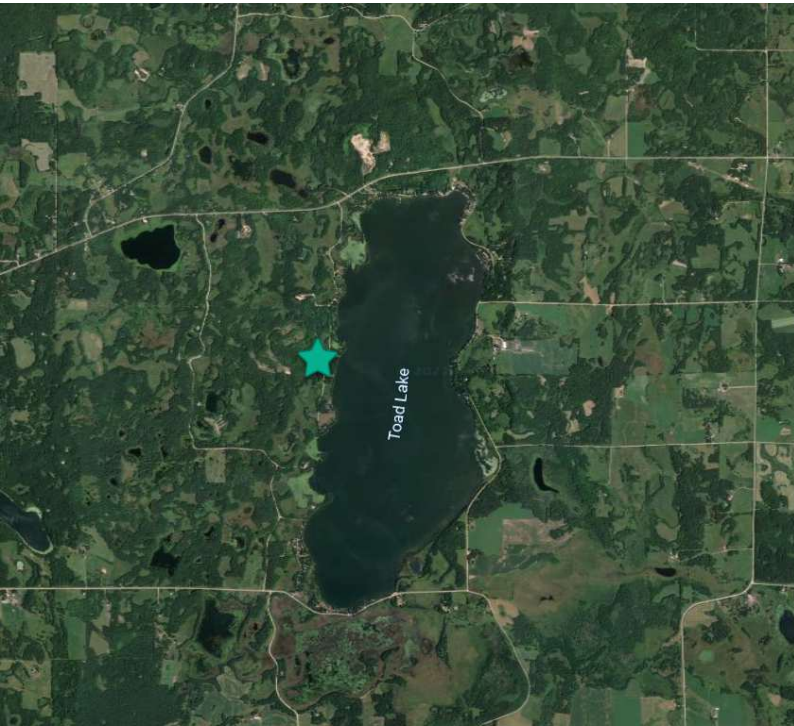


HORIZON
REAL ESTATE GROUP

No warranty or representation, express or implied, is made to the accuracy or completeness of the information contained herein and same is submitted subject to errors, omissions, change of price, rental, or other conditions, withdrawal without notice and to any special listing conditions imposed by the property owner(s).

TOAD LAKE FACTS

FOR SALE | 20705 W TOAD LAKE DRIVE OSAGE, MN 56570



LAKE DESCRIPTION

Toad Lake is a beautiful, quiet lake with all around rocky and sandy bottom with very good fishing and an average depth deep enough to entertain all types of watersports. According to Lake-Link Minnesota fishing guide: "Toad Lake is locally known as a good all-around fishing lake. Angling for Walleye, Northern Pike, Largemouth Bass, and Crappies can all be good at times during an average year. The lake has several large strands of emergent plants and an abundance submerged plants which serve as fish habitat. Walleye fingerings are stocked every odd year"

Toad Lakes overall cleanliness and size of the lake offers the lake lovers a perfectly secluded lake for your friends and family to enjoy every type of lake activity without the business and unwanted commotion of large lakes all while being just a short drive away from countless restaurants and services in Detroit Lakes MN.

The properties bountiful forests offer habit for whitetail deer and plentiful small game wildlife as well.

DAVID SCHLOSSMAN, CCIM

701.261.6161

david@horizonfargo.com

JACE ENGELSTAD

701.261.8061

jace@horizonfargo.com

LAKE DETAILS

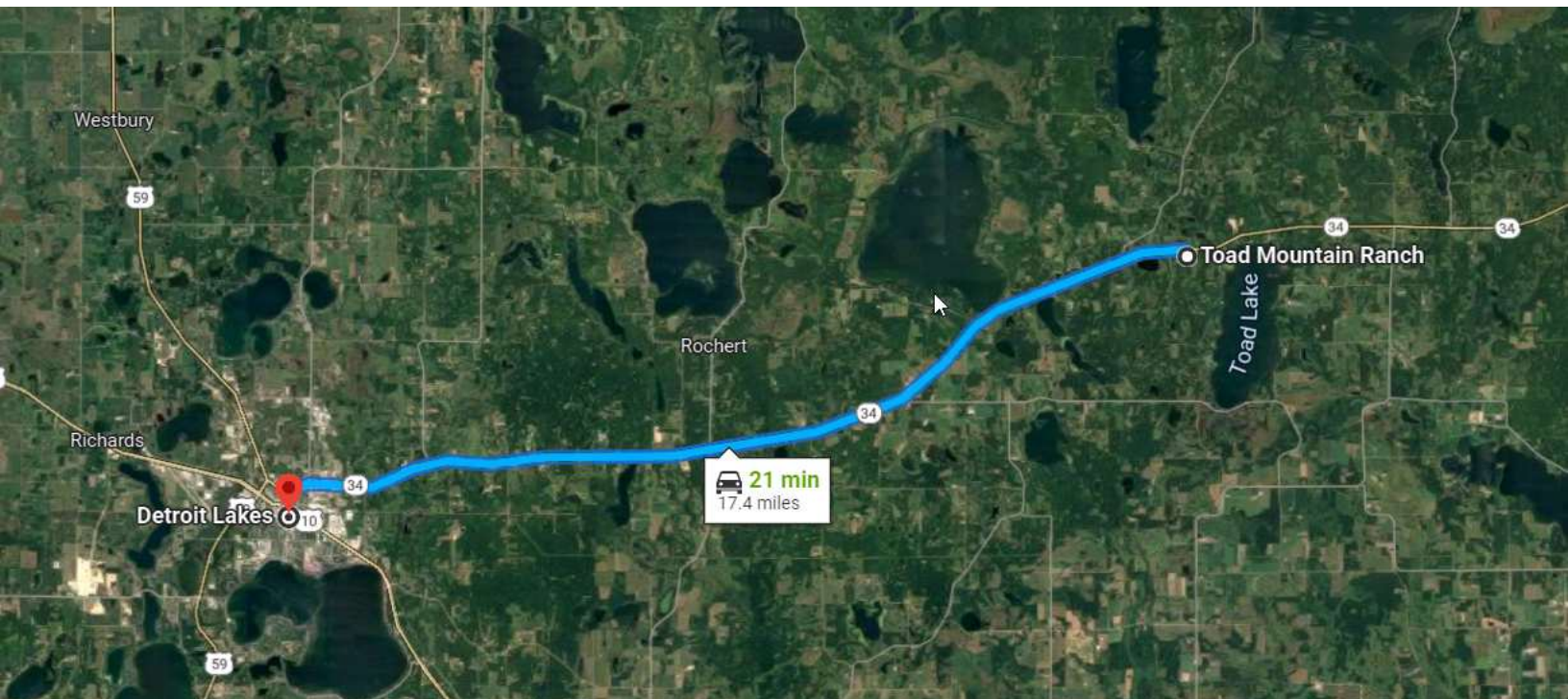
County	Becker
Lake Size:	1,716 Acres
Average Depth:	21 feet
Max Depth:	29 feet
Shoreline:	9.7 miles
Lake Type:	Rocky / Sandy bottom



HORIZON
REAL ESTATE GROUP

TOAD MOUNTAIN

FOR SALE | 20705 W TOAD LAKE DRIVE OSAGE, MN 56570



LOCATIONS	DISTANCE
Toad Mountain --> Downtown Detroit Lakes	21 Minutes
Toad Mountain --> Central Market Grocery Store Detroit Lakes	21 Minutes
Toad Mountain --> The Fireside Restaurant Detroit lakes	22 Minutes
Toad Mountain --> Detroit Lakes Highschool	22 Minutes
Toad Mountain --> Walmart	24 Minutes
Toad Mountain --> Detroit Lakes City Liquor Store	21 Minutes
Toad Mountain --> Byer's Liquor Osage	14 Minutes
Toad Mountain -->Osage Bait & Tackle (Restaurant & Gas Station)	14 Minutes
Toad Mountain --> Park Rapids MN	24 Minutes
Toad Mountain --> Minneapolis MN	3 Hours

DAVID SCHLOSSMAN, CCIM

701.261.6161

david@horizonfargo.com

JACE ENGELSTAD

701.261.8061

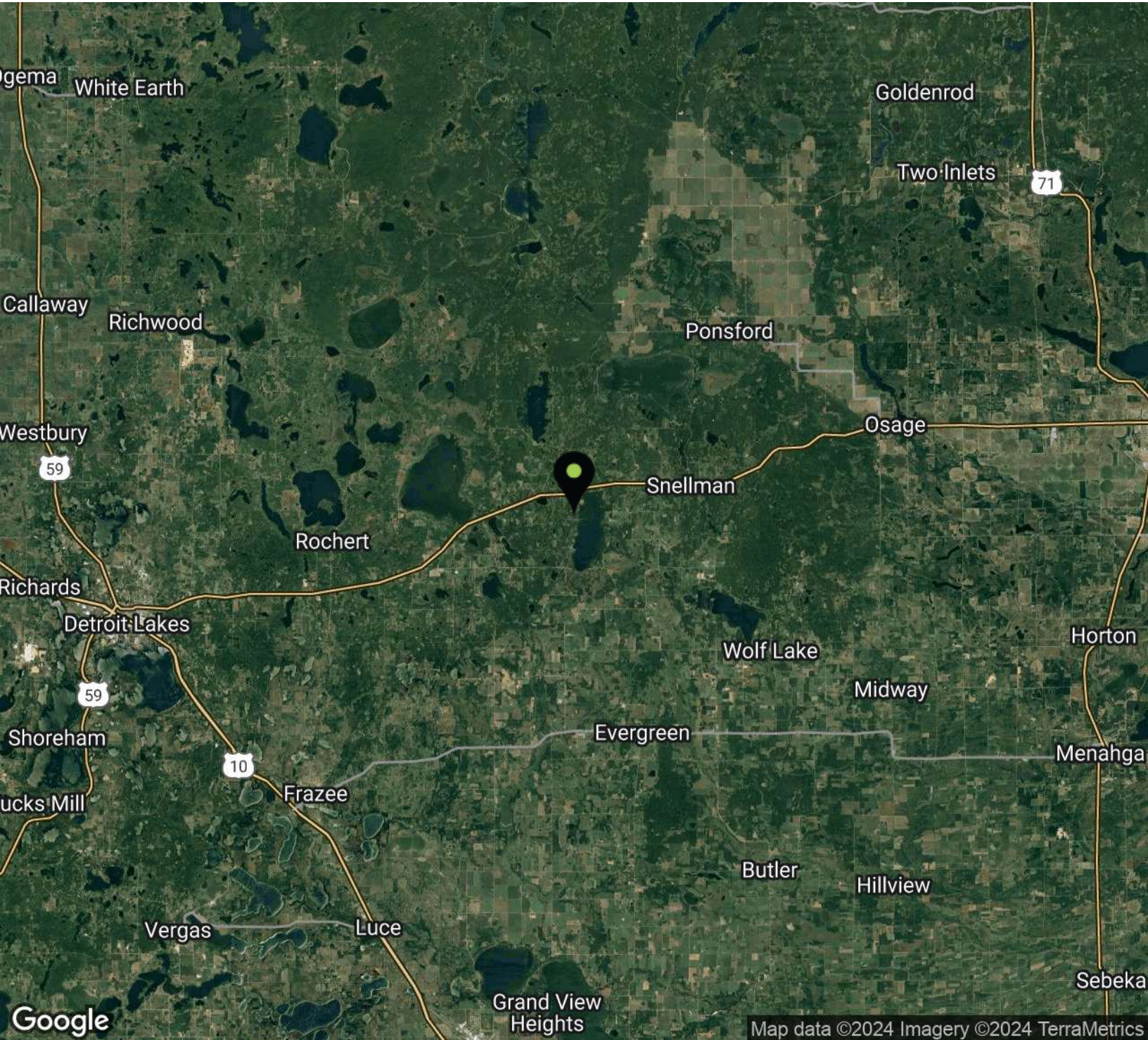
jace@horizonfargo.com



HORIZON
REAL ESTATE GROUP

TOAD MOUNTAIN

FOR SALE | 20705 W TOAD LAKE DRIVE OSAGE, MN 56570



Map data ©2024 Imagery ©2024 TerraMetrics

DAVID SCHLOSSMAN, CCIM

701.261.6161

david@horizonfargo.com

JACE ENGELSTAD

701.261.8061

jace@horizonfargo.com

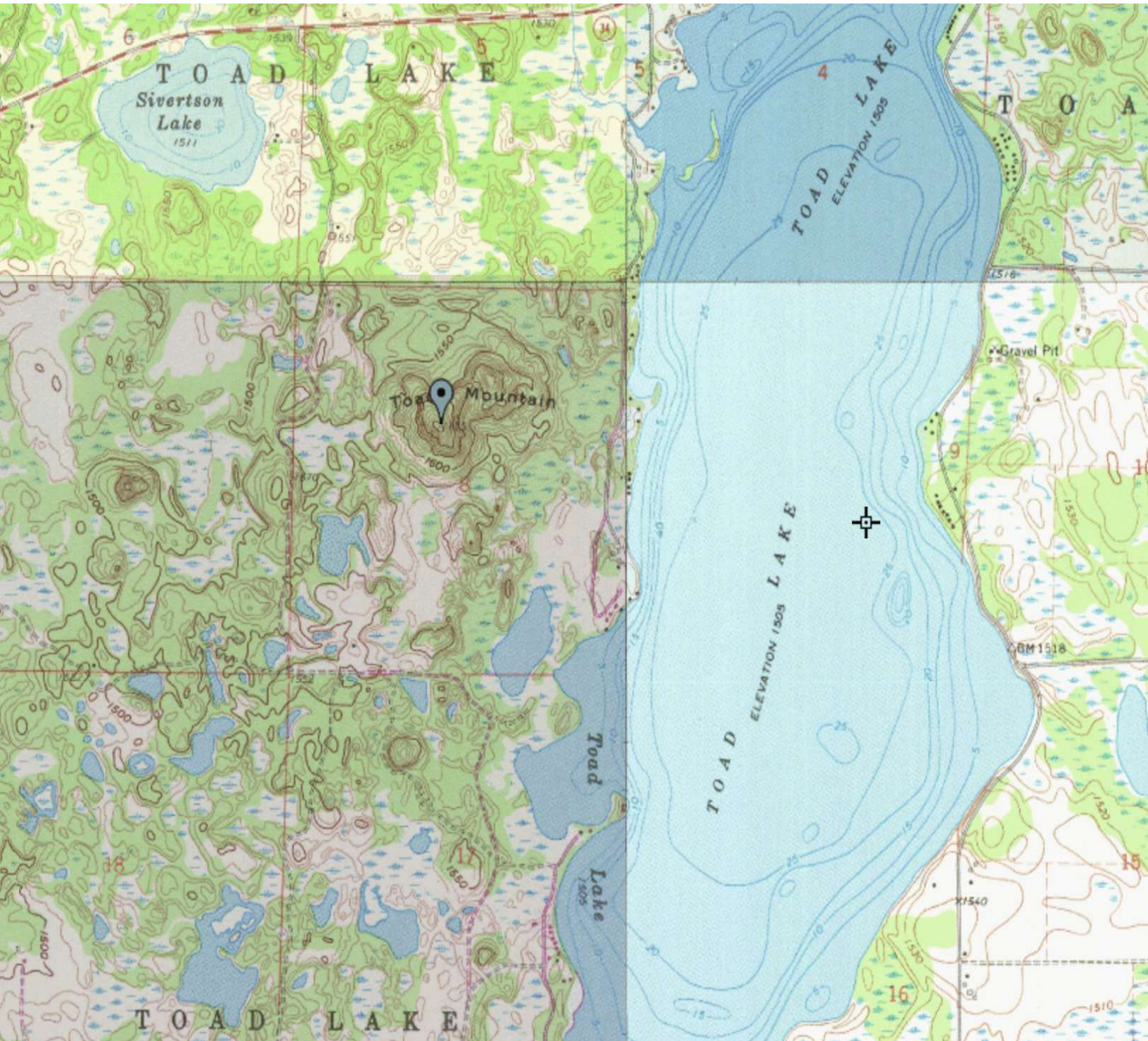


HORIZON
REAL ESTATE GROUP

No warranty or representation, express or implied, is made to the accuracy or completeness of the information contained herein and same is submitted subject to errors, omissions, change of price, rental, or other conditions, withdrawal without notice and to any special listing conditions imposed by the property owner(s).

TOAD MOUNTAIN

FOR SALE | 20705 W TOAD LAKE DRIVE OSAGE, MN 56570



DAVID SCHLOSSMAN, CCIM
701.261.6161
david@horizonfargo.com

JACE ENGELSTAD
701.261.8061
jace@horizonfargo.com

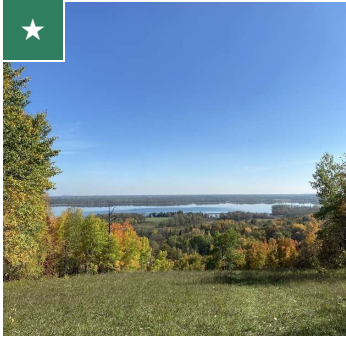


No warranty or representation, express or implied, is made to the accuracy or completeness of the information contained herein and same is submitted subject to errors, omissions, change of price, rental, or other conditions, withdrawal without notice and to any special listing conditions imposed by the property owner(s).

HORIZON
REAL ESTATE GROUP

TOAD MOUNTAIN

FOR SALE | 20705 W TOAD LAKE DRIVE OSAGE, MN 56570



TOAD MOUNTAIN

20705 W Toad Lake Drive , Osage, MN 56570

Price: \$3,000,000 Lot Size: 253 Acres



21297 BROADWATER DRIVE

Pelican Rapids, MN 56572

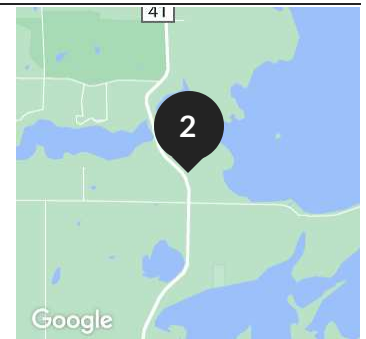
Price: \$6,900,000 Lot Size: 69.21 Acres



STAR LAKE LAND

37610 County Road 41, Dent, MN 56528

Price: \$2,500,000 Lot Size: 237.00 Acres



BATTLE LAKE LAND

35058 State Highway 210, Battle Lake, MN 56515

Price: \$900,000 Lot Size: 158.70 Acres



DAVID SCHLOSSMAN, CCIM
701.261.6161
david@horizonfargo.com

JACE ENGELSTAD
701.261.8061
jace@horizonfargo.com



TOAD MOUNTAIN

FOR SALE | 20705 W TOAD LAKE DRIVE OSAGE, MN 56570



HUBBARD COUNTY LAND

32546 County 4, Park Rapids, MN 56470

Price: \$1,800,000 Lot Size: 227.00 Acres



DAVID SCHLOSSMAN, CCIM

701.261.6161

david@horizonfargo.com

JACE ENGELSTAD

701.261.8061

jace@horizonfargo.com



HORIZON
REAL ESTATE GROUP

TOAD MOUNTAIN

FOR SALE | 20705 W TOAD LAKE DRIVE OSAGE, MN 56570



DAVID SCHLOSSMAN, CCIM

President & Managing Broker

david@horizonfargo.com

MN #40703530 // ND #8360



JACE ENGELSTAD

Senior Commercial Agent

jace@horizonfargo.com

MN #40766357 // ND #10937

DAVID SCHLOSSMAN, CCIM

701.261.6161

david@horizonfargo.com

JACE ENGELSTAD

701.261.8061

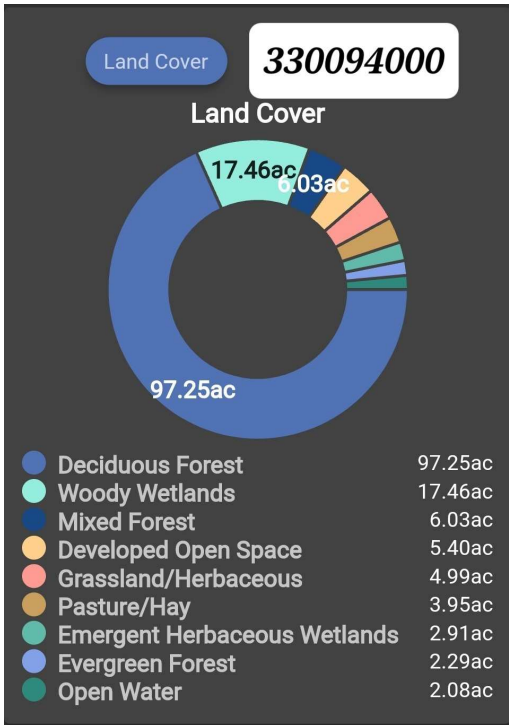
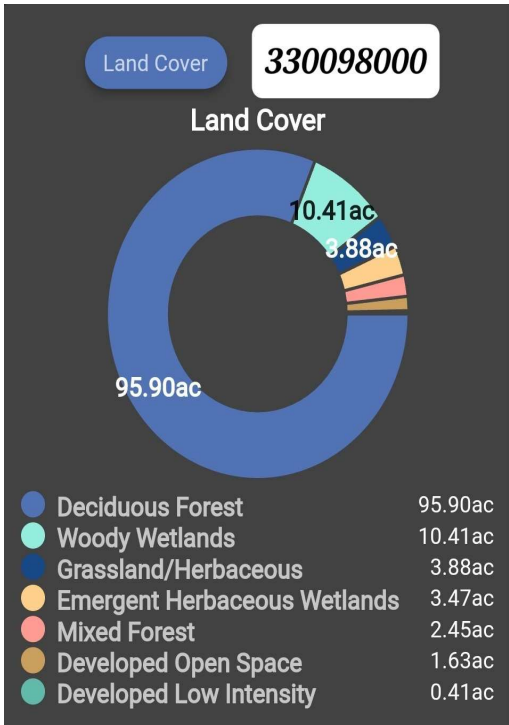
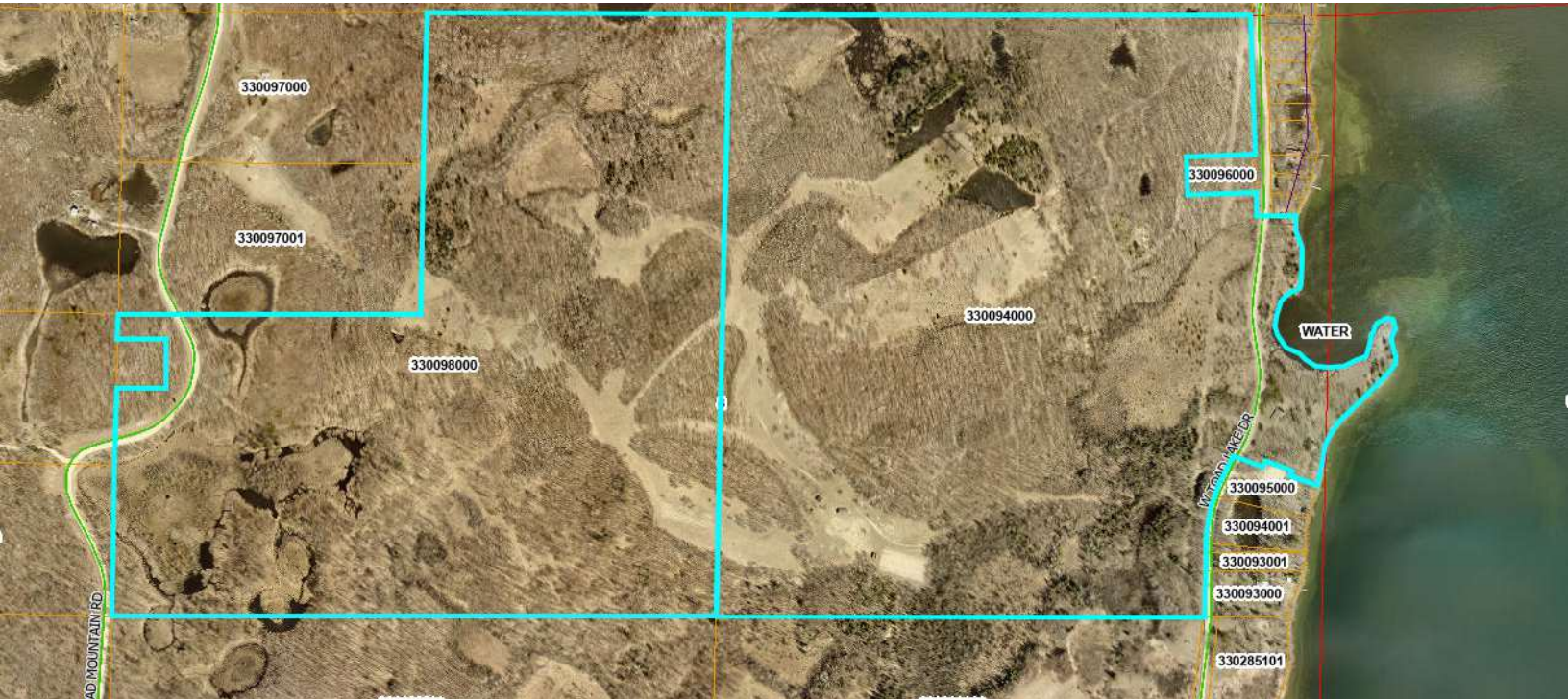
jace@horizonfargo.com



HORIZON
REAL ESTATE GROUP

TOAD MOUNTAIN

FOR SALE | 20705 W TOAD LAKE DRIVE OSAGE, MN 56570



DAVID SCHLOSSMAN, CCIM

701.261.6161

david@horizonfargo.com

JACE ENGELSTAD

701.261.8061

jace@horizonfargo.com



HORIZON
REAL ESTATE GROUP

No warranty or representation, express or implied, is made to the accuracy or completeness of the information contained herein and same is submitted subject to errors, omissions, change of price, rental, or other conditions, withdrawal without notice and to any special listing conditions imposed by the property owner(s).