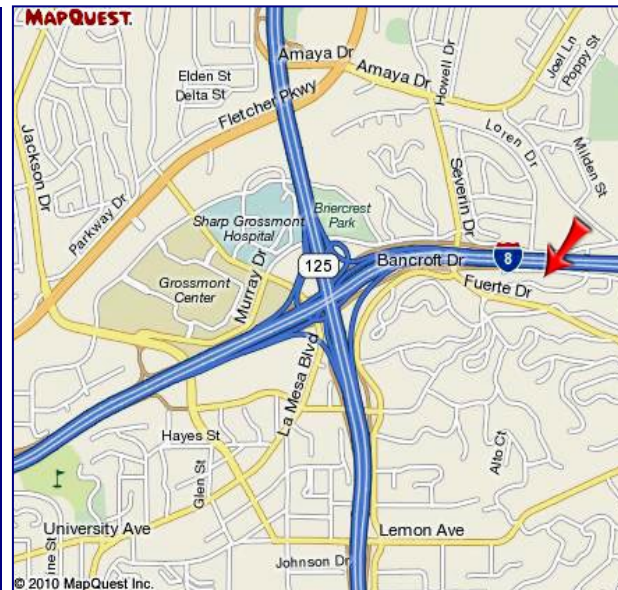


**FOR LEASE**  
**Offices - High Visibility**

**9400 Grossmont Summit Dr.**  
**La Mesa, CA, 91941**



- ◆ Suites ranging from 1,300 - 2,600 sq.ft.
- ◆ Can combine suites 203 & 204, for 2,600 sq.ft.
- ◆ Unique architecture with lots of glass
- ◆ Underground parking with 3 per 1,000 SF parking
- ◆ Building has very high exposure to Interstate 8 with 228,000 vehicles per day (Caltrans - 2015)
- ◆ Building has hi-speed Cox Cable
- ◆ Energy efficient - LEED Certified
- ◆ Great signage opportunities
- ◆ Priced at \$2.00 SF, NNN



**SDCRE**

San Diego Commercial Real Estate  
BRE #01322469

8200 Allison Avenue, La Mesa, CA 91942  
[www.SanDiegoCRE.com](http://www.SanDiegoCRE.com)

For further information please contact:

**Mark Robak**

**619-778-3800**

**[Mark@SanDiegoCRE.com](mailto:Mark@SanDiegoCRE.com)**

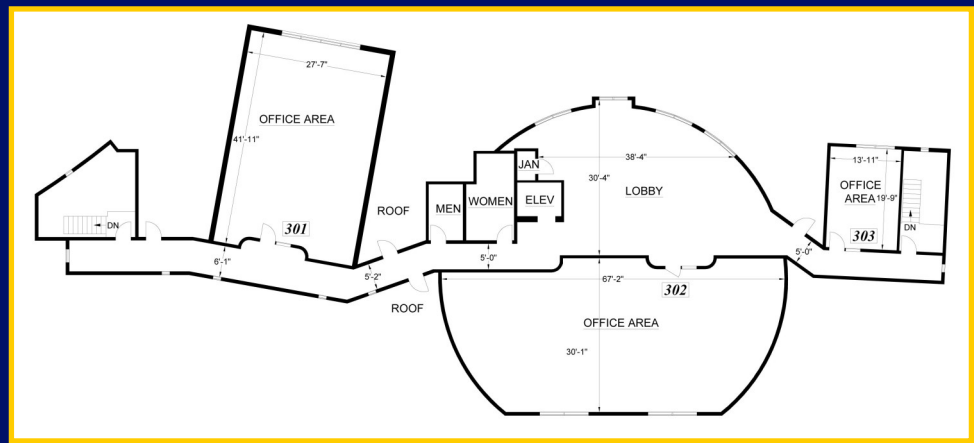
BRE #01024745

This information above was furnished by the owner or obtained from information we understand was authorized by the owner. No warranties or representations, expressed or implied, are made as to the accuracy of the information contained herein, and same is submitted subject to errors, omissions, change of price, rental or other conditions, withdrawal without notice, and to any special listing conditions imposed by our principals. This information is given with the understanding that all negotiations relating to the leasing or potentially purchasing of the property described herein shall be conducted through SDCRE.

301 — 1,308 sf

302 — 2,000 sf

303 — 320 sf



## Top Level

201 — 2,694 sf

202 — 2,252 sf

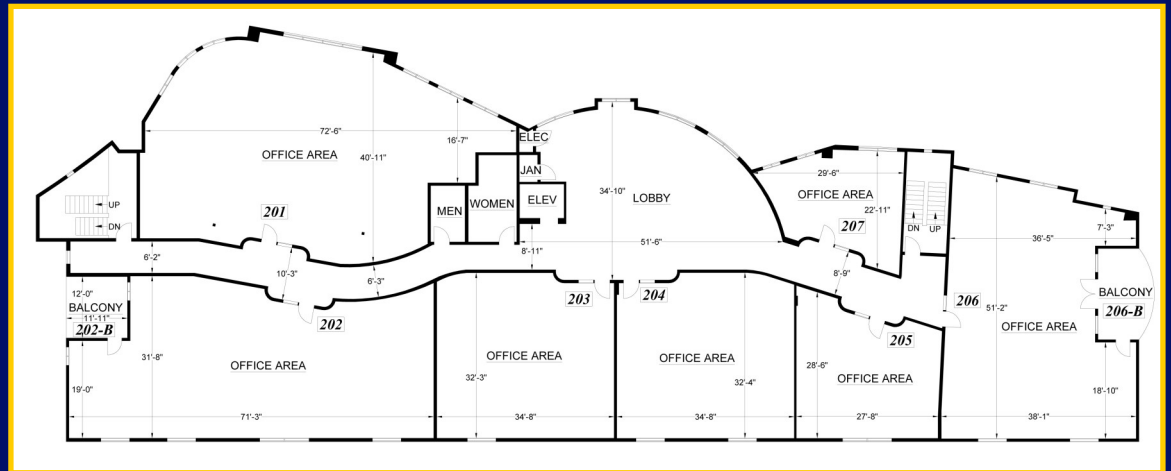
203 - 1,306 sf

204 - 1,302 sf

205 — 808 sf

206 — 1,926 sf

207 — 558 sf



## Main Level

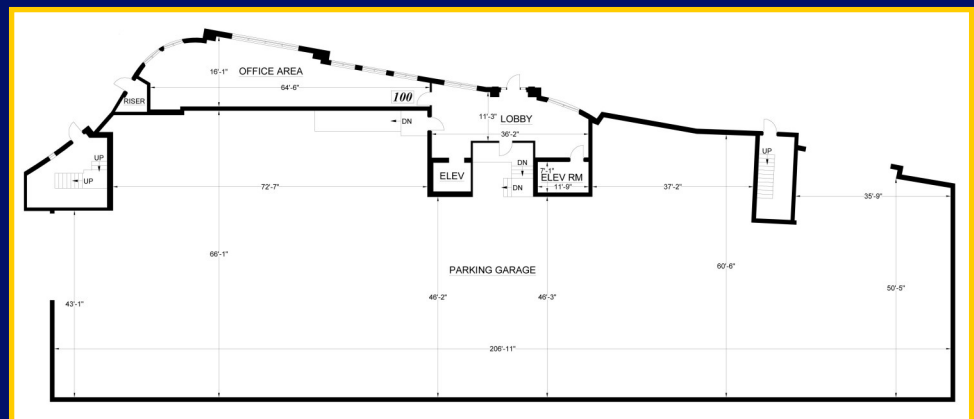
100 — 904 sf

Parking Spaces

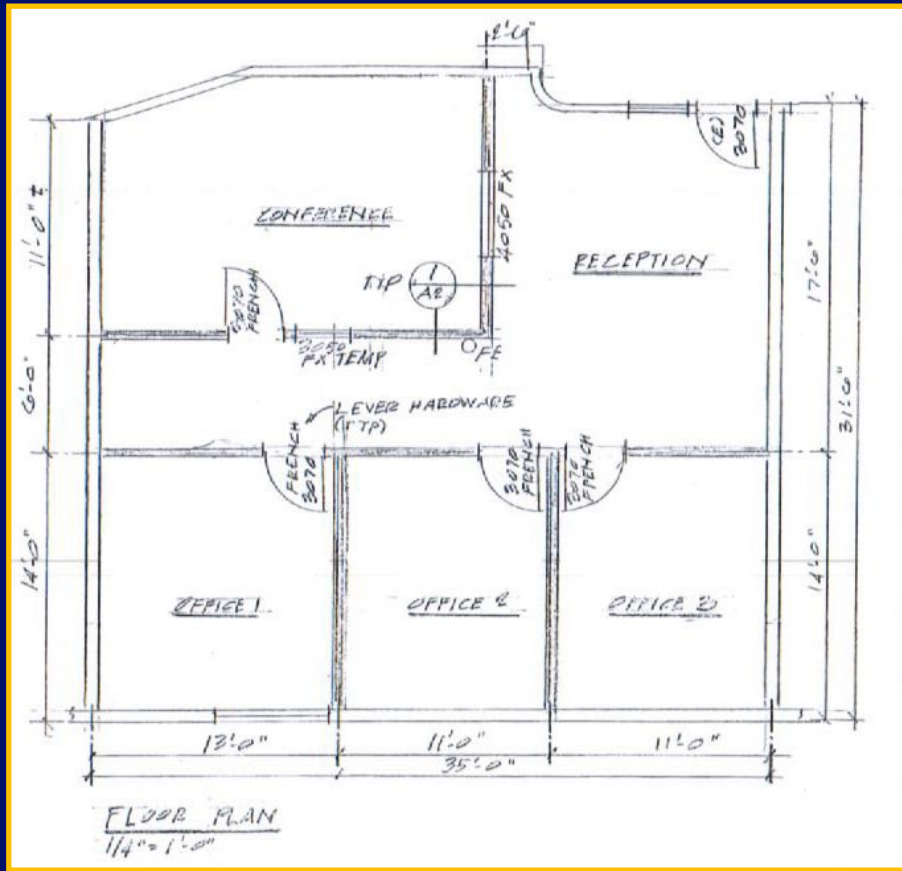
Covered - 33

Uncovered - 8

Total - 41



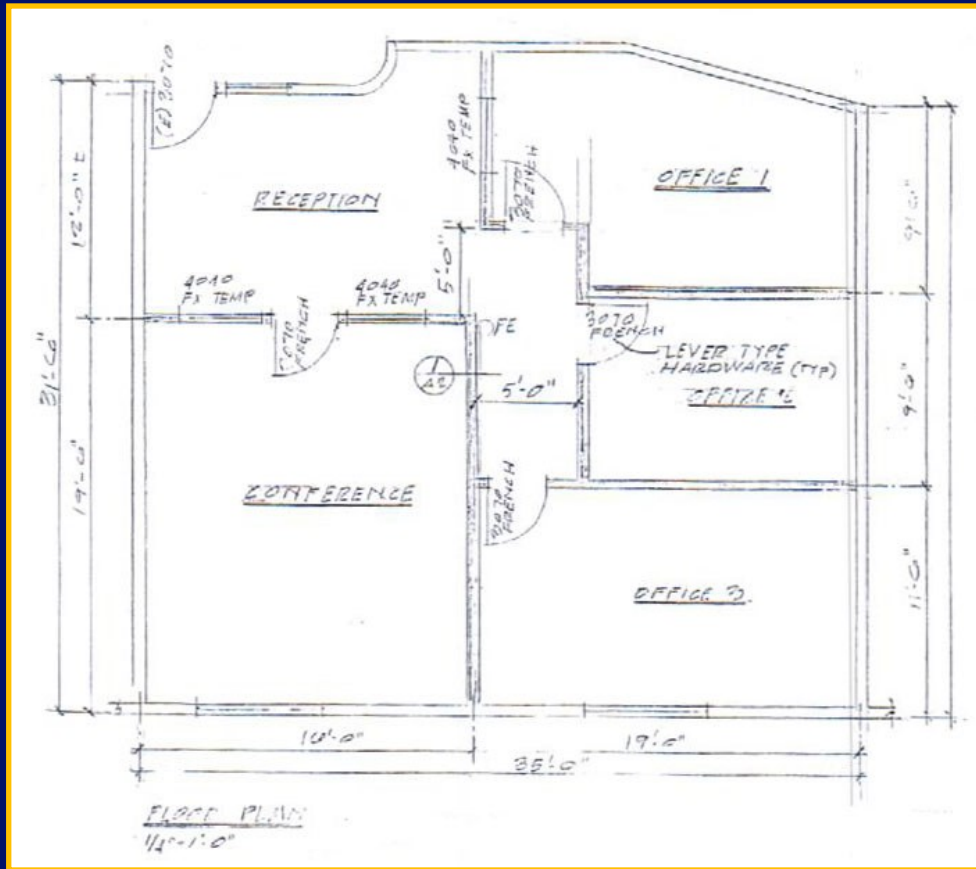
## Parking Level



Suite 203 Floor Plan



Entering Suite - Tenant to choose Carpet Color



Suite 204 Floor Plan



Entering Suite - Tenant to choose Carpet Color



Aerial View



Front View



Hi-Image



Distinctive