

Trident Industrial Park

NEW HUDSON | MI



SOAVE
REAL ESTATE

CBRE

PROPERTY DESCRIPTION

IN PARTNERSHIP WITH SOAVE REAL ESTATE, CBRE IS PLEASED TO OFFER TO MARKET TRIDENT INDUSTRIAL CENTER. STRATEGICALLY POSITIONED JUST MILES NORTHWEST OF THE CITY AT I-96 & TRIDENT INDUSTRIAL PARK BLVD, THIS SITE OFFERS UP TO 100,000 SQUARE FEET OF FLEXIBLE WAREHOUSE SPACE, IDEALLY SUITED FOR CUTTING-EDGE INDUSTRIAL MANUFACTURING, EFFICIENT DISTRIBUTION, AND INNOVATIVE R&D USERS SEEKING A STATE-OF-THE-ART FACILITY IN A THRIVING MARKET.

- 100,000 SF
- Will Finish to Suit
- Prominent I-96 Frontage
- Easy Access to I-96 at Wixom Road or Milford Road Interchanges

AERIAL



1,415'

100,000 SF
7.2 ACRES

OLD PLANK RD

TRIDENT INDUSTRIAL BLVD

GRAND RIVER AVE



RENDERING



RENDERING

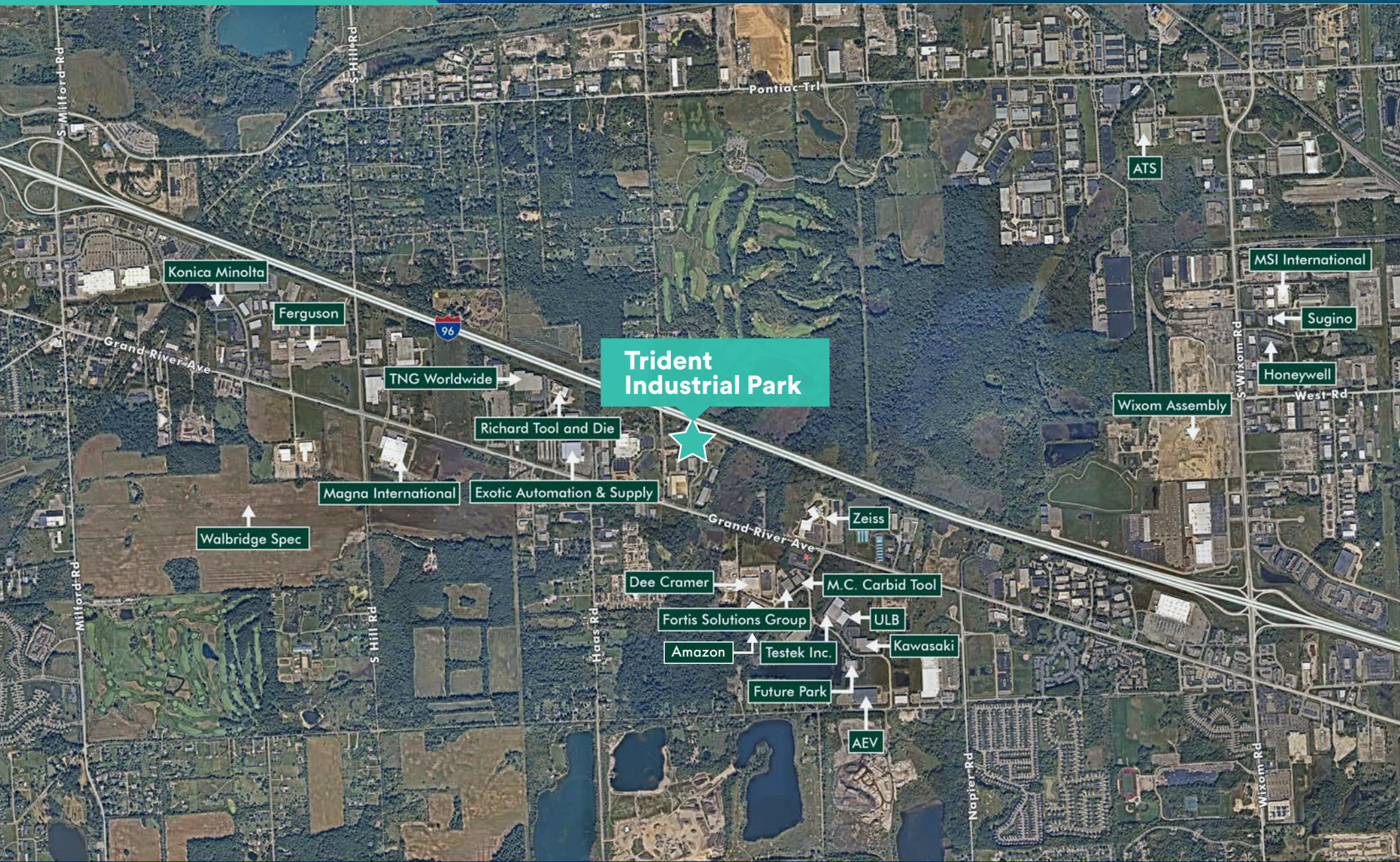


RENDERING



SITE PLAN





Trident Industrial Park

Konica Minolta

Ferguson

TNG Worldwide

Richard Tool and Die

Magna International

Exotic Automation & Supply

Walbridge Spec

Dee Cramer

Fortis Solutions Group

Amazon

Future Park

M.C. Carbid Tool

ULB

Kawasaki

AEV

Zeiss

ATS

MSI International

Sugino

Honeywell

Wixom Assembly

West Rd

AMENITY MAP



Property Overview

County:
Oakland

Zoning:
Light Industrial

Divisible (Min/Max):
100,000 SF

Lease Rate:
TBD

Land & Structures

Size:	100,000 SF	Electric:	To Suit
Lot Size:	7.2 AC	HVAC:	To Suit
Office SF:	6,400 - 12,800 SF	Car Parking:	200 Spaces
Clear Height:	30'	Zoning:	Light Industrial
Truck Docks:	Up to 9	I-96 Frontage:	1,415'±
Grade Doors:	2	Lighting:	LED To Suit
Column Spacing:	50'		



Easy I-96 access at Wixom Road or Milford Road Interchanges



I-96 Frontage and Signage

CHARLES M. GINSTER
Senior Vice President
+1 248 351 2063
chuck.ginster@cbre.com

JACOB GINSTER
Associate
+1 248 351 2082
jake.ginster@cbre.com

EUGENE J. AGNONE III
Senior Vice President
+1 248 351 2024
eugene.agnone@cbre.com

SOAVE **CBRE**
REAL ESTATE

© 2024 CBRE, Inc. All rights reserved. This information has been obtained from sources believed reliable, but has not been verified for accuracy or completeness. You should conduct a careful, independent investigation of the property and verify all information. Any reliance on this information is solely at your own risk. CBRE and the CBRE logo are service marks of CBRE, Inc. All other marks displayed on this document are the property of their respective owners, and the use of such logos does not imply any affiliation with or endorsement of CBRE. Photos herein are the property of their respective owners. Use of these images without the express written consent of the owner is prohibited. PMStudio_November2020