

1319 F Street, NW

Between 13th & 14th Streets NW

New Availability To The Market

As exclusive agents, we are pleased to offer the following space for lease:

Space	Area	Rental	Possession	Term
Partial 2nd Fl Ste 204	2,571 RSF	\$37.00 sq.ft.	Immediate	Negotiable
Partial 3 rd Fl Ste 305	1,282 RSF	\$36.00 sq.ft.	Immediate	Negotiable
Partial 4 th Fl Ste 402	3,298 RSF	\$37.00 sq.ft.	Immediate	Negotiable
Partial 8 th Fl Ste 800	807 RSF	\$37.00 sq.ft.	Immediate	Negotiable
Partial 8 th FL STE 805-10	1,019-2,071 RSF	\$37.00 sq.ft.	Immediate	Negotiable

Features:

- 1 Block from Metro Center
- Mid-Block Boutique Office Building
- 2 Blocks from the White House
- Close to Fine Restaurants, Theater and Museums
- Onsite Management

Brenda Pistolas
Property Manager
(202) 463-3037
bpistolas@aol.com

www.bebcapital.com



Procuring broker shall only be entitled to a commission, calculated in accordance with the rates approved by our principal only if such procuring broker executes a brokerage agreement acceptable to us and our principal and the conditions as set forth in the brokerage agreement are fully and unconditionally satisfied. Although all information furnished regarding property for sale, rental, or financing is from sources deemed reliable, such information has not been verified and no express representation is made nor is any to be implied as to the accuracy thereof and it is submitted subject to errors, omissions, change of price, rental or other conditions, prior sale, lease or financing, or withdrawal without notice and to any special conditions imposed by our principal.

1319 F Street, NW

Between 13th & 14th Streets NW

AVAILABLE FOR IMMEDIATE OCCUPANCY

Partial 2nd Floor



• Features:

- 2,571 rsf
- Nine Windowed Offices
- Pantry
- Work Room
- Conference Room
- Open Space
- Available Immediately

www.bebcapital.com



Procuring broker shall only be entitled to a commission, calculated in accordance with the rates approved by our principal only if such procuring broker executes a brokerage agreement acceptable to us and our principal and the conditions as set forth in the brokerage agreement are fully and unconditionally satisfied. Although all information furnished regarding property for sale, rental, or financing is from sources deemed reliable, such information has not been verified and no express representation is made nor is any to be implied as to the accuracy thereof and it is submitted subject to errors, omissions, change of price, rental or other conditions, prior sale, lease or financing, or withdrawal without notice and to any special conditions imposed by our principal.

1319 F Street, NW

Between 13th & 14th Streets NW

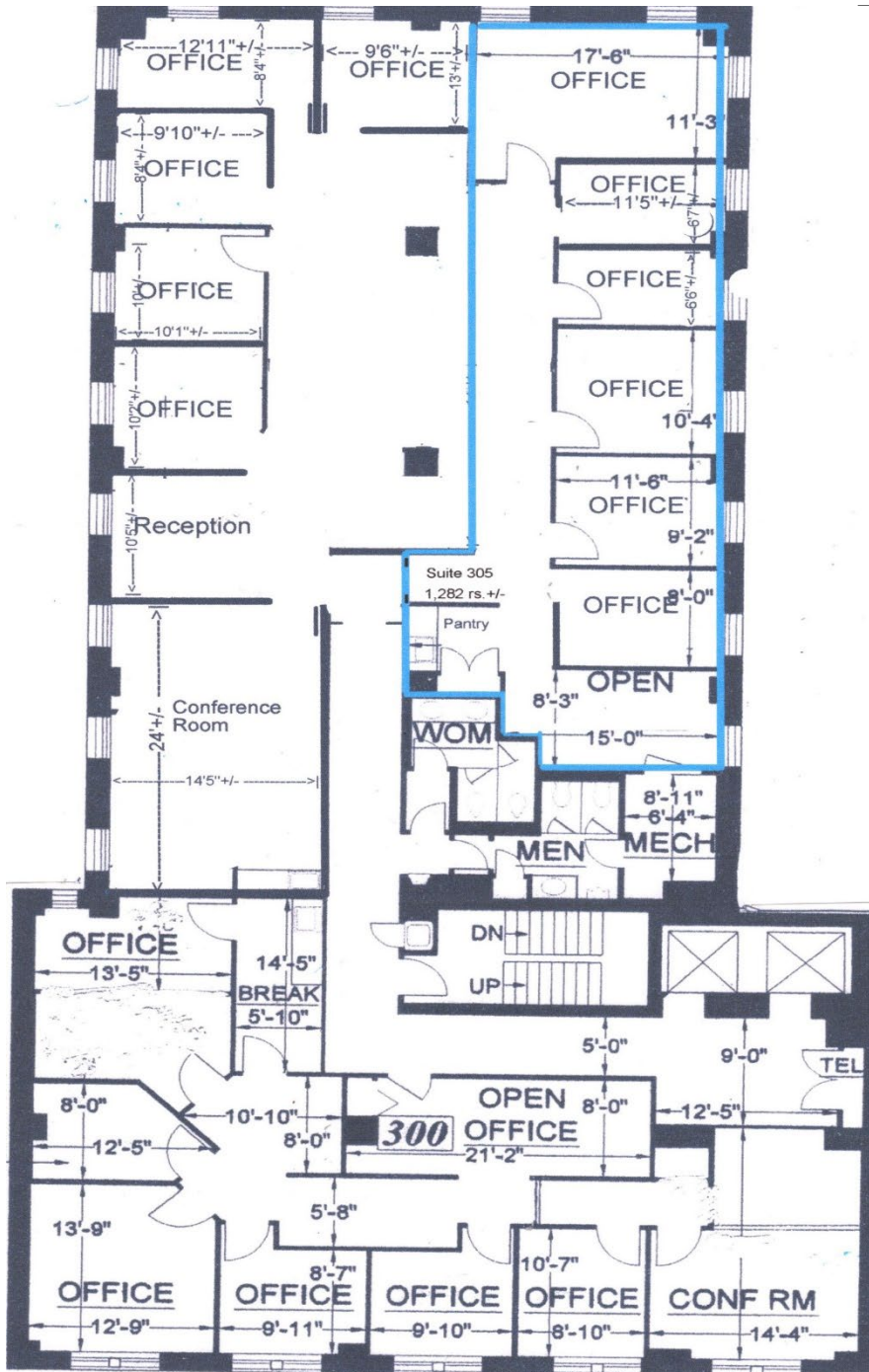
AVAILABLE FOR IMMEDIATE OCCUPANCY

Partial 3rd Floor Suite

Features:

Suite 305

- 1,282 RSF
- 5 offices
- Conference room
- Small open space
- Pantry



www.bebcapital.com



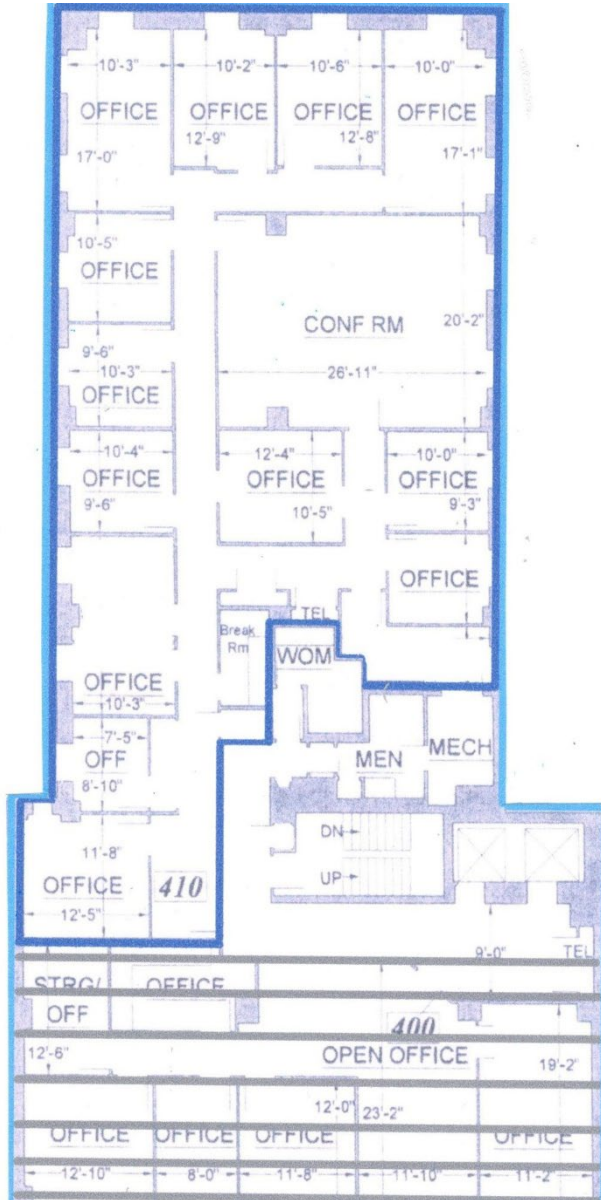
Procuring broker shall only be entitled to a commission, calculated in accordance with the rates approved by our principal only if such procuring broker executes a brokerage agreement acceptable to us and our principal and the conditions as set forth in the brokerage agreement are fully and unconditionally satisfied. Although all information furnished regarding property for sale, rental, or financing is from sources deemed reliable, such information has not been verified and no express representation is made nor is any to be implied as to the accuracy thereof and it is submitted subject to errors, omissions, change of price, rental or other conditions, prior sale, lease or financing, or withdrawal without notice and to any special conditions imposed by our principal.

1319 F Street, NW

Between 13th & 14th Streets NW

New Availability To The Market

Partial 4th Floor



Features:

- 3,298 sq. ft
- 12-13 Windowed Offices
- Large Conference Room
- Pantry
- Work Room
- Immediate Availability

For Further Information, Please Contact:

Brenda Pistolas
Property Manager
(202) 463-3037
bpistolas@aol.com

www.bebcapital.com



Procuring broker shall only be entitled to a commission, calculated in accordance with the rates approved by our principal only if such procuring broker executes a brokerage agreement acceptable to us and our principal and the conditions as set forth in the brokerage agreement are fully and unconditionally satisfied. Although all information furnished regarding property for sale, rental, or financing is from sources deemed reliable, such information has not been verified and no express representation is made nor is any to be implied as to the accuracy thereof and it is submitted subject to errors, omissions, change of price, rental or other conditions, prior sale, lease or financing, or withdrawal without notice and to any special conditions imposed by our principal.

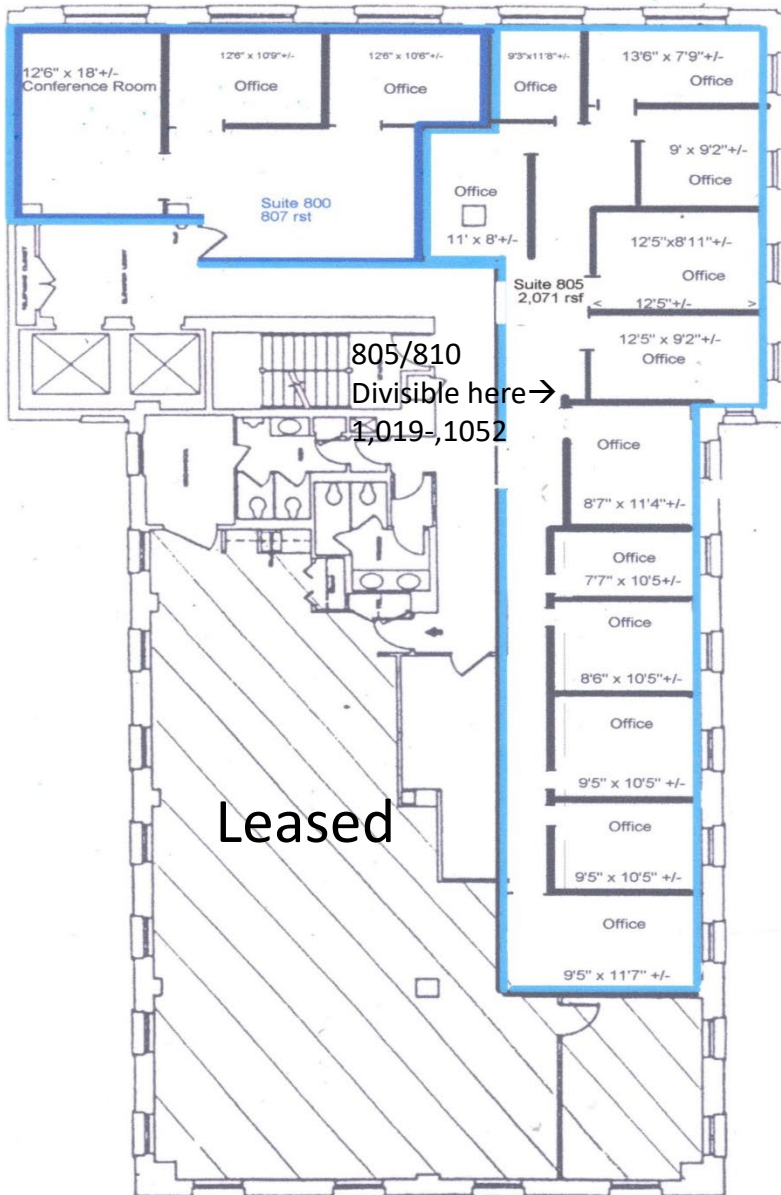
1319 F Street, NW

Between 13th & 14th Streets NW

New Availability To The Market

Partial 8th Floor- Available Immediately

F Street



Features:

Suite 800

- 807 RSF
- 2 Windowed Offices Overlooking F St.
- Large Conference Room
- Reception
- Direct Elevator Exposure
- Available March 2025

Suites may be combined

Suite 805-Divisible

- 1,019-2,071 RSF
- 2 Windowed Office Overlooking F St.
- 8 Additional Offices
- Work/Storage Room
- Conference Room
- Available Immediately

For Further Information, Please Contact:

Brenda Pistolas
Property Manager
(202) 463-3037
bpistolas@aol.com

www.bebcapital.com



Procuring broker shall only be entitled to a commission, calculated in accordance with the rates approved by our principal only if such procuring broker executes a brokerage agreement acceptable to us and our principal and the conditions as set forth in the brokerage agreement are fully and unconditionally satisfied. Although all information furnished regarding property for sale, rental, or financing is from sources deemed reliable, such information has not been verified and no express representation is made nor is any to be implied as to the accuracy thereof and it is submitted subject to errors, omissions, change of price, rental or other conditions, prior sale, lease or financing, or withdrawal without notice and to any special conditions imposed by our principal.