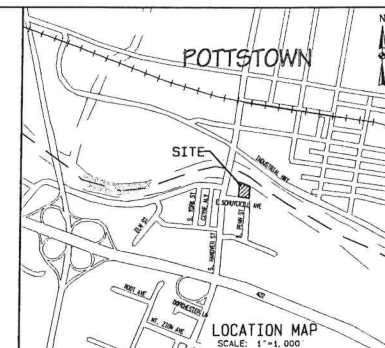
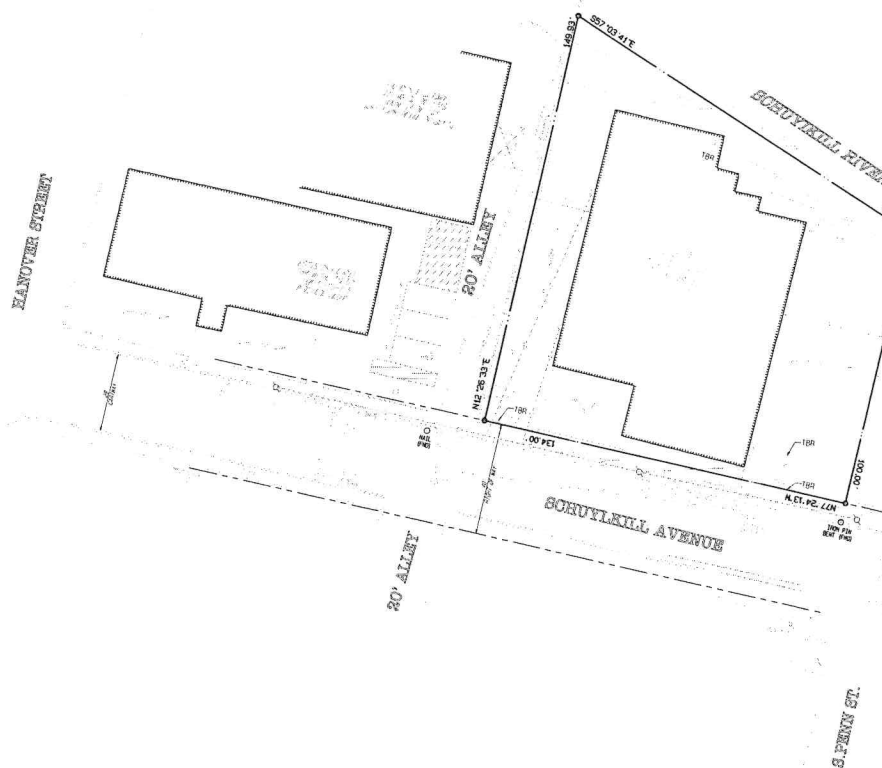


LEGEND

- CATCH BASIN (C.B.)
- SANITARY OR STORM MANHOLES (AS INDICATED)
- WATER VALVE CAP
- UTILITY POLE W/GUY WIRE
- ELECTRIC BOX
- GAS VALVE
- STREET SIGN (AS NOTED)
- EXISTING TREES
- EXIST. FENCE LINE



SKETCH PLAN
EXISTING CONDITIONS PLAN

SITUATE IN:
NORTH COVENTRY TOWNSHIP
CHESTER COUNTY,
PENNSYLVANIA

57-59 SCHUYLKILL AVENUE

Ludgate Engineering Corporation

(ENGINEERS, SURVEYORS, PLANNERS
(ENVIRONMENTAL SCIENTISTS
© 2008

LINCOLN CORPORATE CENTER
10 VANGUARD DRIVE, SUITE
READING, PA 19606
PHONE 610/404-7330
FAX 610/404-7371

REVISION	DATE	DESCRIPTION
----------	------	-------------

1. CONTRACT NO. 2.		3.		4.	
5.		6.		7.	
8.		9.		10.	
11.		12.		13.	
14.		15.		16.	
17.		18.		19.	
20.		21.		22.	
23.		24.		25.	
26.		27.		28.	
29.		30.		31.	
32.		33.		34.	
35.		36.		37.	
38.		39.		40.	
41.		42.		43.	
44.		45.		46.	
47.		48.		49.	
50.		51.		52.	
53.		54.		55.	
56.		57.		58.	
59.		60.		61.	
62.		63.		64.	
65.		66.		67.	
68.		69.		70.	
71.		72.		73.	
74.		75.		76.	
77.		78.		79.	
80.		81.		82.	
83.		84.		85.	
86.		87.		88.	
89.		90.		91.	
92.		93.		94.	
95.		96.		97.	
98.		99.		100.	