

RECEIVED
DEC 16 1998
COUNTY OF TUOLUMNE
COMMUNITY DEVELOPMENT
DEPARTMENT

ORDINANCE NO. 2213

A SPECIAL ORDINANCE AMENDING SECTION 17.06.020
OF THE TUOLUMNE COUNTY ORDINANCE CODE BY ESTABLISHING
THE BOUNDARIES OF ZONING DISTRICTS UNDER THE
TUOLUMNE COUNTY UNIFORM ZONING ORDINANCE

- oOo -

The Board of Supervisors of the County of Tuolumne ordains as follows:

SECTION 1: Section 17.06.020 of the Tuolumne County Ordinance Code is hereby amended by the establishment of those districts as shown on Exhibit "A" hereof, attached hereto and by this reference made a part hereof.

SECTION 2: All Ordinances of the County of Tuolumne or portions thereof in conflict herewith are hereby repealed.

SECTION 3: If any provision of the Ordinance or the application thereof to any person or circumstances is for any reason held invalid, such invalidity shall not affect other provisions or applications of the Ordinance which can be given effect without the invalid provisions or applications thereof, and to this end the provisions of this Ordinance are severable.

SECTION 4: This Ordinance shall take effect thirty (30) days after its adoption. The Clerk of the Board of Supervisors is hereby authorized and directed to publish a summary of this ordinance in the Union Democrat, a newspaper of general circulation printed and published in the County of Tuolumne, State of California, prior to fifteen (15) days after its passage.

OPD Follows

After holding public hearings as required by law, the foregoing Ordinance passed and adopted at a regular meeting of the Board of Supervisors of the County of Tuolumne, State of California, on this 15 day of December, 1998, by the following vote, to wit:

AYES: Rotelli, Rountree, Marks, Shontz, Plead

NOES: none

ABSTAIN: none

ABSENT: none

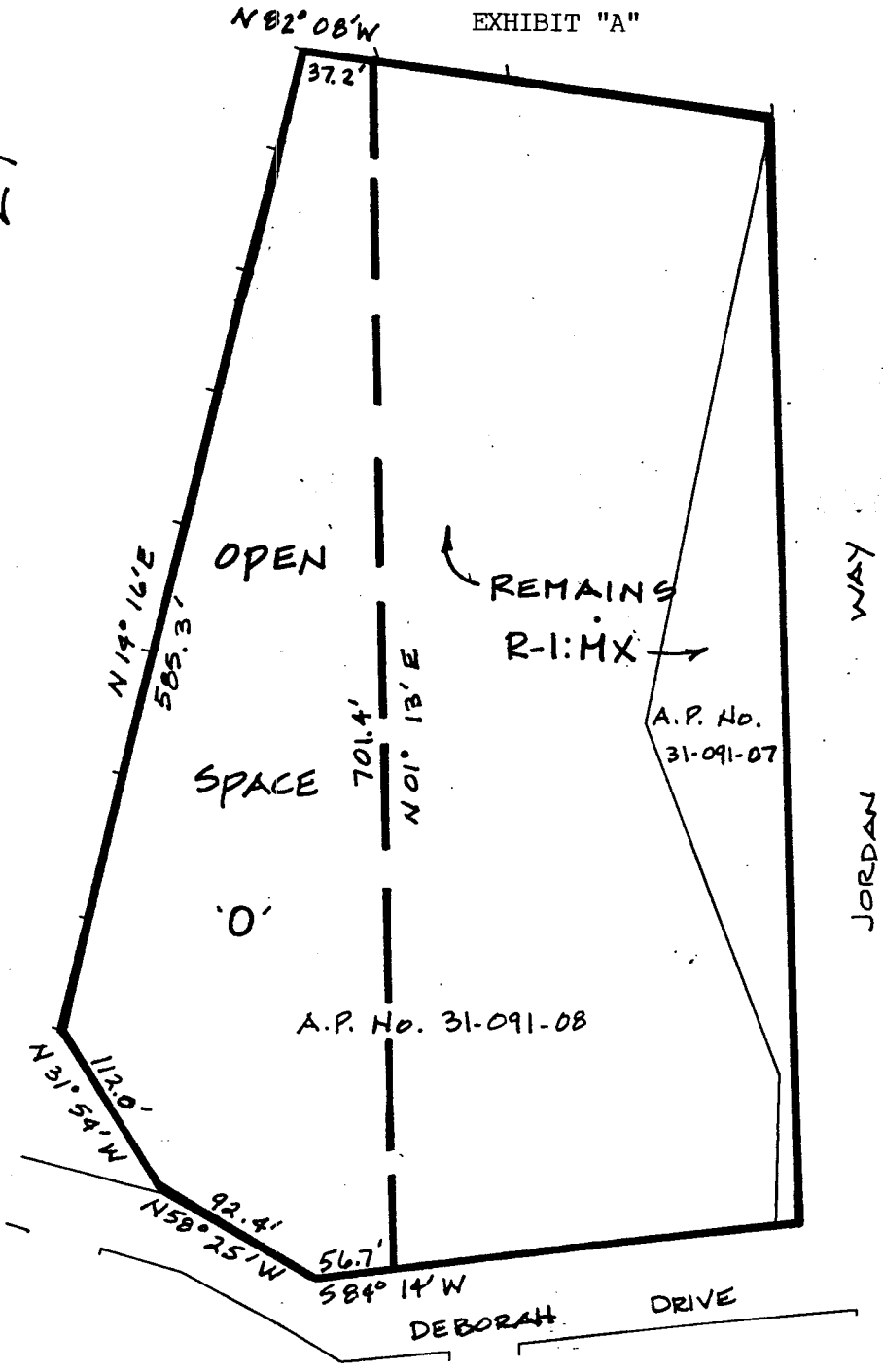
Larry A. Rotelli
LARRY A. ROTELLI, Chairman
Board of Supervisors,
County of Tuolumne,
State of California

ATTEST: EDNA M. BOWCUTT
Clerk of the Board of Supervisors

By Edna M. Bowcutt (SEAL)

Ord. No. 2273

EXHIBIT "A"



N 82° 08' W

37.2'

N 19° 16' E
505.3'

OPEN

SPACE

0'

A.P. No. 31-091-08

REMAINS
R-1:MX

A.P. No.
31-091-07

701.4'
N 01° 13' E

N 31° 54' W
112.0'

N 58° 25' W
92.4'

S 84° 14' W
56.7'

DEBORAH DRIVE

JORDAN WAY

JORDAN WAY