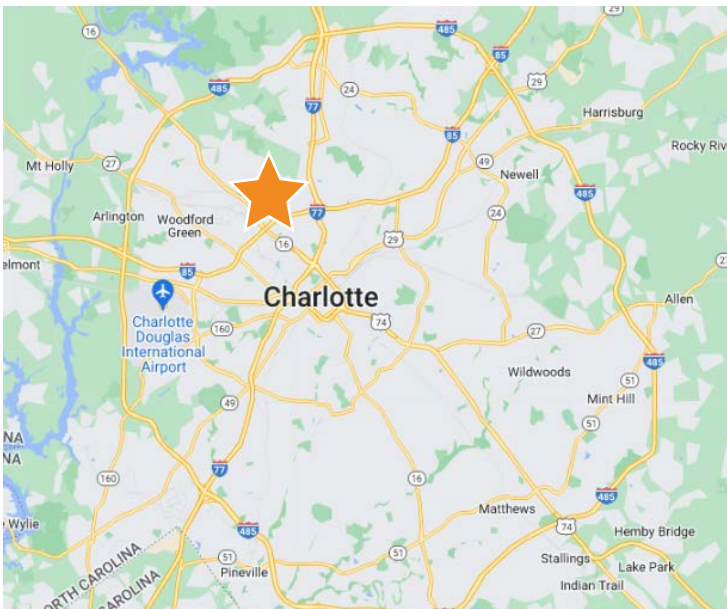


809 LAWTON ROAD  
CHARLOTTE, NC 28216

FOUNDRY  
COMMERCIAL



#### BUILDING FEATURES

TOTAL SQUARE FEET	±8,750 SF
ASKING RATE	\$12.50/SF NNN
CLEAR HEIGHT	18'
DOCK HIGHS	3 - 8' x 10'
DRIVE-IN	1 - 14' x 14'
ZONING	ML-2

FOR MORE INFORMATION, PLEASE CONTACT:

DAVID HANNA | 704.607.9675

Partner

David.Hanna@foundrycommercial.com

Licensed Real Estate Broker

WARREN SNOWDON | 704.965.1178

Managing Director | Principal

Warren.Snowdon@foundrycommercial.com

Licensed Real Estate Broker

FOUNDRY  
COMMERCIAL

2151 Hawkins Street, Suite 1000  
Charlotte, NC 28203

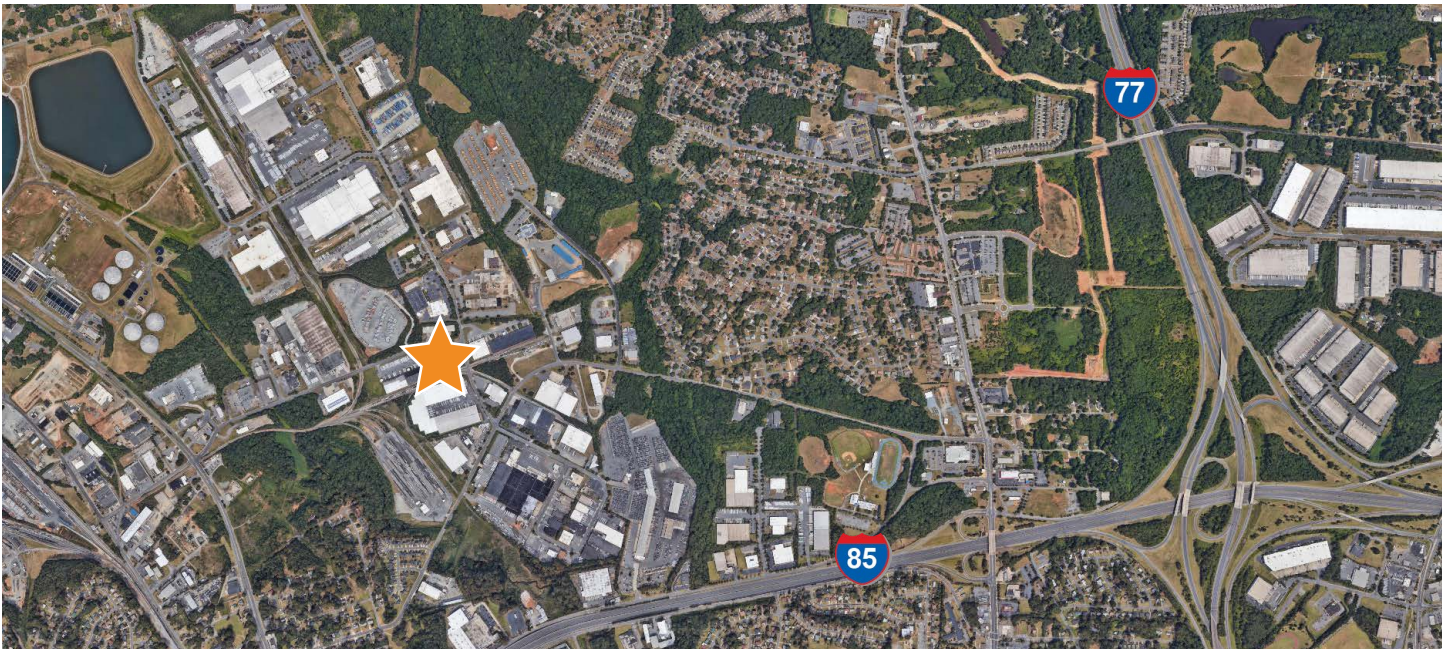
[foundrycommercial.com](http://foundrycommercial.com)

Although the information contained herein was provided by sources believed to be reliable, Foundry Commercial makes no representation, expressed or implied, as to its accuracy and said information is subject to errors, omissions or changes.

# 809 LAWTON ROAD CHARLOTTE, NC 28216

## PROPERTY DETAILS

- ± 7,891 SF Warehouse
- ± 859 SF Office
- Loading:
  - » Three (8' x 10') Dock High Doors
  - » One (14' x 14') Grade Level Door
- Clear Height: 18'
- Central Location with Easy Access to I-85, I-77, and Uptown Charlotte



FOR MORE INFORMATION, PLEASE CONTACT:

DAVID HANNA | **704.607.9675**

Partner

David.Hanna@foundrycommercial.com

Licensed Real Estate Broker

WARREN SNOWDON | **704.965.1178**

Managing Director | Principal

Warren.Snowdon@foundrycommercial.com

Licensed Real Estate Broker

**FOUNDRY**  
COMMERCIAL

2151 Hawkins Street, Suite 1000  
Charlotte, NC 28203

[foundrycommercial.com](http://foundrycommercial.com)

Although the information contained herein was provided by sources believed to be reliable, Foundry Commercial makes no representation, expressed or implied, as to its accuracy and said information is subject to errors, omissions or changes.