

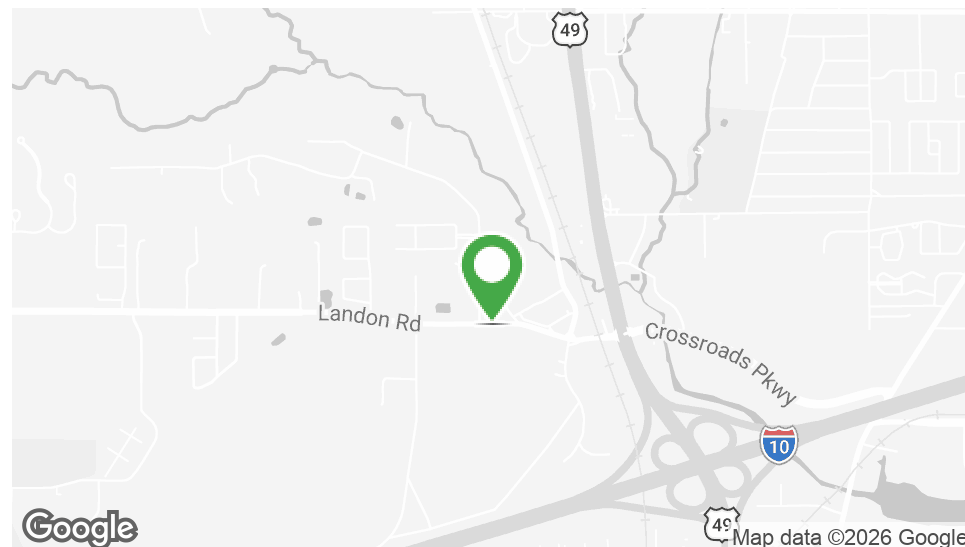


# 2.78 ACRES OF LAND NEAR SAM'S CLUB

15523 Landon Road, Gulfport, MS 39503

**MONTE LUFFEY • PRINCIPAL**  
OFFICE: 228.276.2700  
MOBILE: 228.547.1953  
mluffey@southeastcre.com

**TIM CARLSON • PRINCIPAL**  
OFFICE: 228.276.2700  
MOBILE: 228.547.0707  
tcarlson@southeastcre.com



## PROPERTY DESCRIPTION

Southeast Commercial is pleased to present  $\pm 2.78$  acres for sale on Landon Road in Gulfport.

The property includes a  $\pm 5,800$  SF building situated across three parcels in a strong retail corridor near Sam's Club, Bop's Frozen Custard, Buffalo Wild Wings, Texas Roadhouse, Crumbl Cookies, The UPS Store, and Newk's Eatery. The site offers excellent visibility with convenient access to I-10 and Highway 49.

Located in Section 16, this is a prime opportunity for retail, office, or commercial redevelopment in one of Gulfport's most active areas.

## OFFERING SUMMARY

Sale Price:	\$550,000
Lot Size:	2.78 Acres
Building Size:	5,807 SF

DEMOGRAPHICS	0.3 MILES	0.5 MILES	1 MILE
Total Households	29	120	472
Total Population	83	336	1,297
Average HH Income	\$86,119	\$86,116	\$85,135

## SPECIAL PURPOSE PROPERTY FOR SALE

### PROPERTY SUMMARY



**SOUTHEAST  
COMMERCIAL**  
REAL ESTATE







# 2.78 ACRES OF LAND NEAR SAM'S CLUB

15523 Landon Road, Gulfport, MS 39503

MONTE LUFFEY • PRINCIPAL

OFFICE: 228.276.2700

MOBILE: 228.547.1953

mluffey@southeastcre.com

TIM CARLSON • PRINCIPAL

OFFICE: 228.276.2700

MOBILE: 228.547.0707

tcarlson@southeastcre.com



SPECIAL PURPOSE PROPERTY FOR SALE

AERIAL



**SOUTHEAST  
COMMERCIAL**  
REAL ESTATE

SOUTHEAST COMMERCIAL REAL ESTATE | 2310 19th Street, Gulfport, MS 39501 | 3900 N Causeway Blvd., Suite 100, Metairie, LA 70002 | [www.southeastcre.com](http://www.southeastcre.com)







# 2.78 ACRES OF LAND NEAR SAM'S CLUB

15523 Landon Road, Gulfport, MS 39503

MONTE LUFFEY • PRINCIPAL

OFFICE: 228.276.2700

MOBILE: 228.547.1953

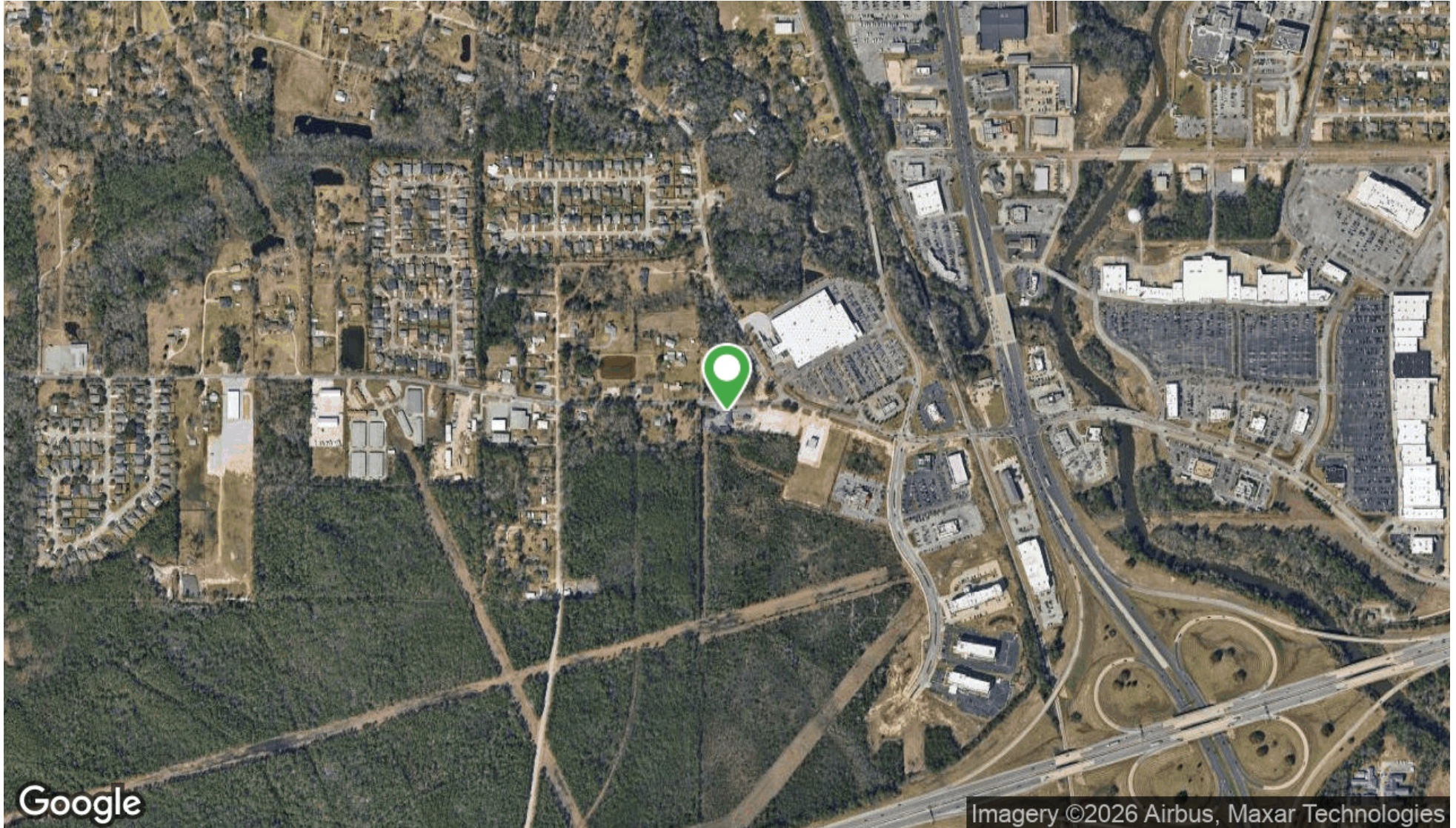
mluffey@southeastcre.com

TIM CARLSON • PRINCIPAL

OFFICE: 228.276.2700

MOBILE: 228.547.0707

tcarlson@southeastcre.com



SPECIAL PURPOSE PROPERTY FOR SALE

AERIAL MAP



**SOUTHEAST**  
COMMERCIAL  
REAL ESTATE

SOUTHEAST COMMERCIAL REAL ESTATE | 2310 19th Street, Gulfport, MS 39501 | 3900 N Causeway Blvd., Suite 100, Metairie, LA 70002 | [www.southeastcre.com](http://www.southeastcre.com)







# 2.78 ACRES OF LAND NEAR SAM'S CLUB

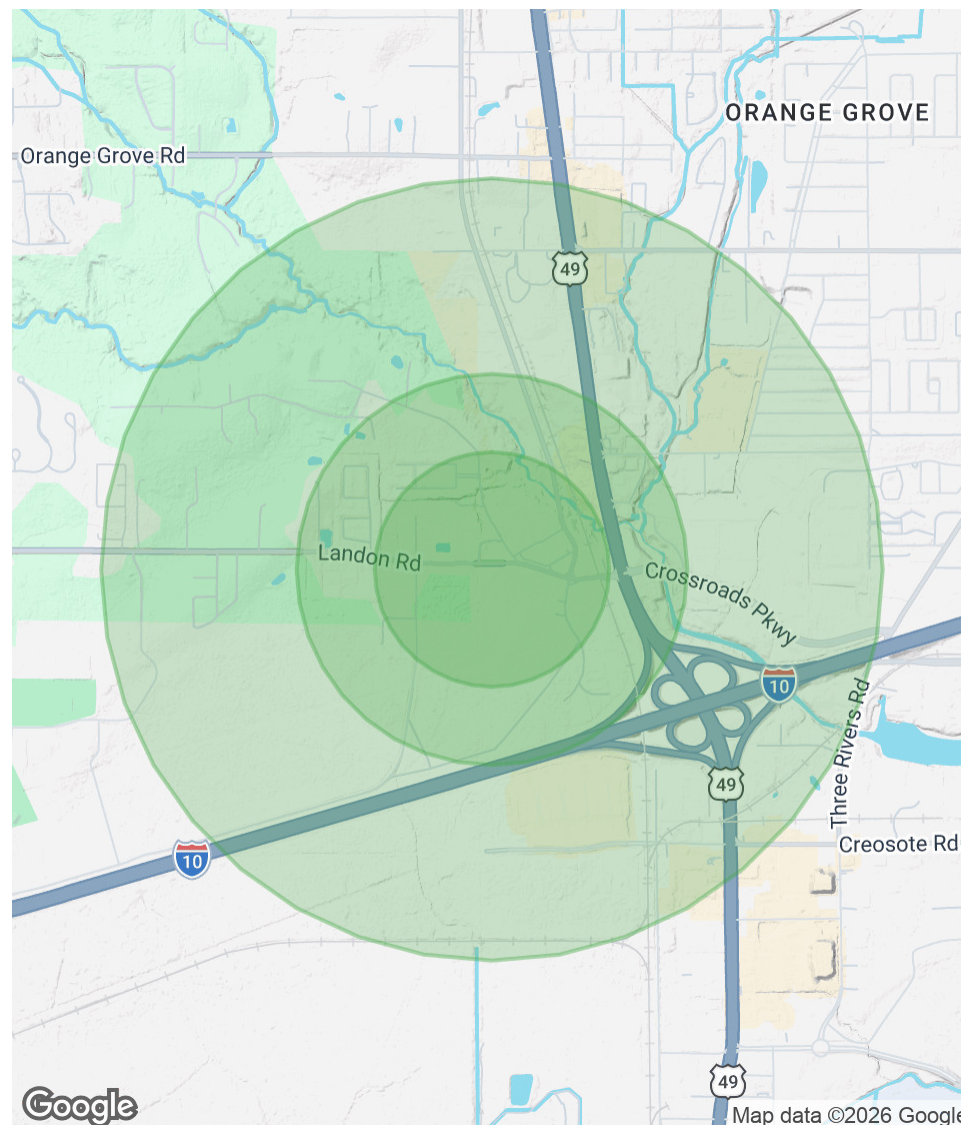
15523 Landon Road, Gulfport, MS 39503

**MONTE LUFFEY • PRINCIPAL**  
OFFICE: 228.276.2700  
MOBILE: 228.547.1953  
mluffey@southeastcre.com

**TIM CARLSON • PRINCIPAL**  
OFFICE: 228.276.2700  
MOBILE: 228.547.0707  
tcarlson@southeastcre.com

POPULATION	0.3 MILES	0.5 MILES	1 MILE
Total Population	83	336	1,297
Average Age	39	39	39
Average Age (Male)	37	37	37
Average Age (Female)	40	40	40
HOUSEHOLDS & INCOME	0.3 MILES	0.5 MILES	1 MILE
Total Households	29	120	472
# of Persons per HH	2.9	2.8	2.7
Average HH Income	\$86,119	\$86,116	\$85,135
Average House Value	\$207,280	\$207,162	\$192,503

*Demographics data derived from AlphaMap*



**SPECIAL PURPOSE PROPERTY FOR SALE**

**DEMOGRAPHICS MAP & REPORT**

**SOUTHEAST COMMERCIAL REAL ESTATE** | 2310 19th Street, Gulfport, MS 39501 | 3900 N Causeway Blvd., Suite 100, Metairie, LA 70002 | [www.southeastcre.com](http://www.southeastcre.com)



**SOUTHEAST  
COMMERCIAL**  
REAL ESTATE

