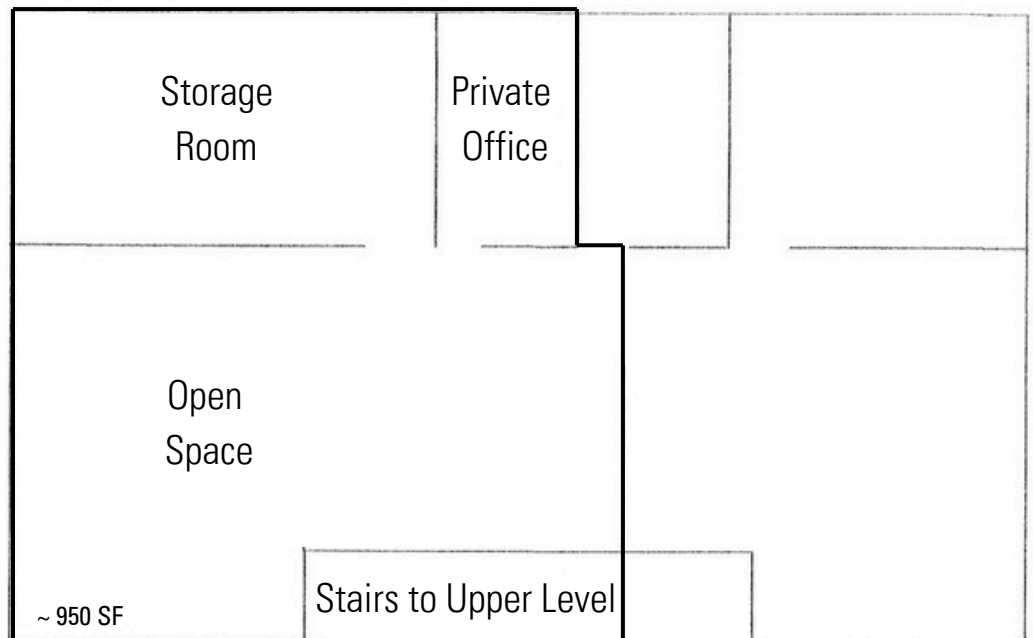
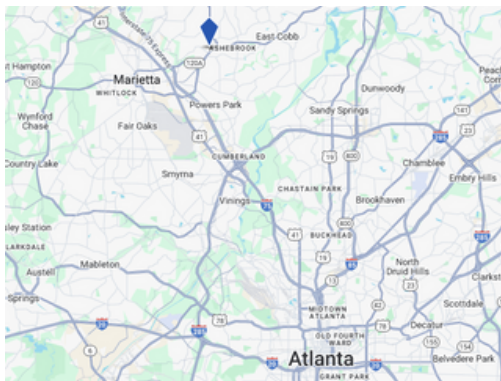




OFFICE SUBLET 2255 SEWELL MILL ROAD, MARIETTA, GA 30062

- Roughly 950 SF
- One large open area, one private office, and a large storage area
- Within minutes of 120 Loop & I-75



JOHN SIMPSON
MANAGING BROKER
770-409-9700
JOHNS@SUGAROAK.COM

