



FOR LEASE

1409 S Los Angeles St, Los Angeles, CA 90015

Downtown Los Angeles Location

±8,800 SF Stand-Alone Warehouse/Retail Building

**FOR MORE INFORMATION,
PLEASE CONTACT:**

BRYAN ABAYAN | ASSOCIATE VICE PRESIDENT

D: 310.883.8476

BABAYAN@DAUMCRE.COM

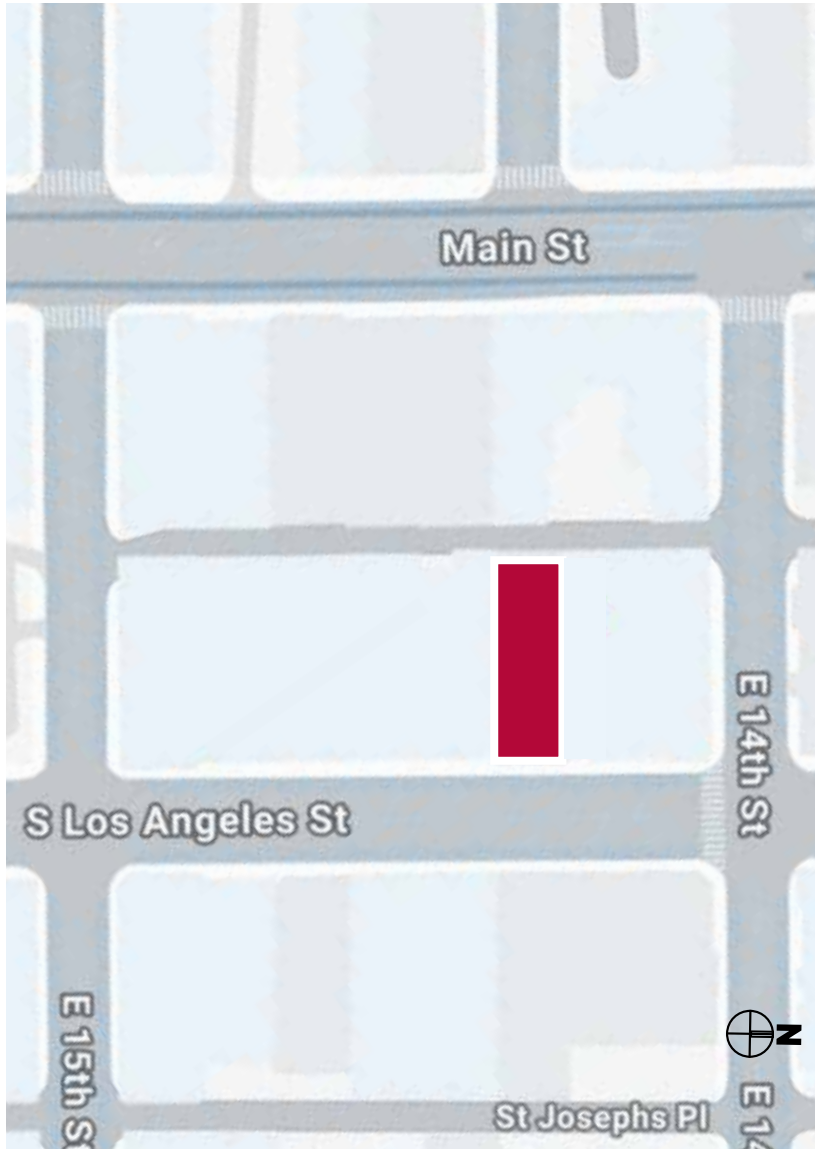
CADRE #02005294

D/AQ Corp. #01129558. Maps Courtesy ©Google & ©Microsoft. Although all information is furnished regarding for sale, rental or financing is from sources deemed reliable, such information has not been verified and no express representation is made nor is any to be implied as to the accuracy thereof, and it is submitted subject to errors, omissions, changes of price, rental or other conditions, prior sale, lease or financing, or withdrawal without notice.



Highlights

Site Plan



Offering Highlights



Total Size | ±8,800 SF Stand-Alone Warehouse/Retail Building
Two Story Building with Alley Access



Zoning | M2 Zoning



Lease Term | Vacant Now | Term Negotiable



Type | Masonry Construction
Stand-Alone Building



Ground Level Loading Doors | 3



Office Space | ±2,000 SF Office with 2 Restrooms



Signage | Excellent Signage



Superior Access | Downtown Los Angeles Location

Photos



Warehouse



Office

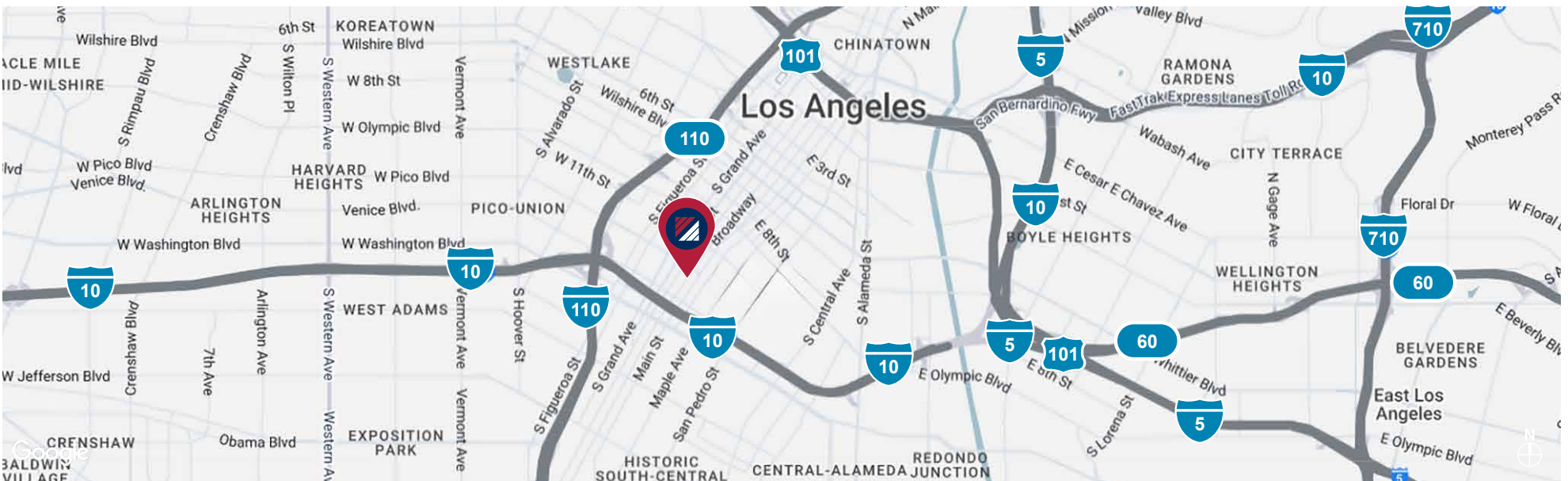
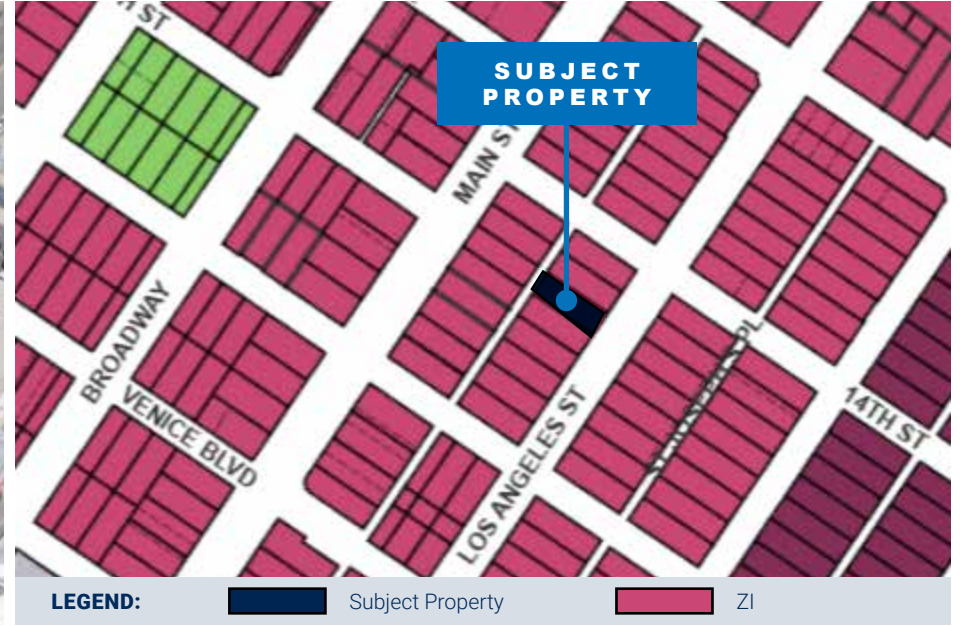


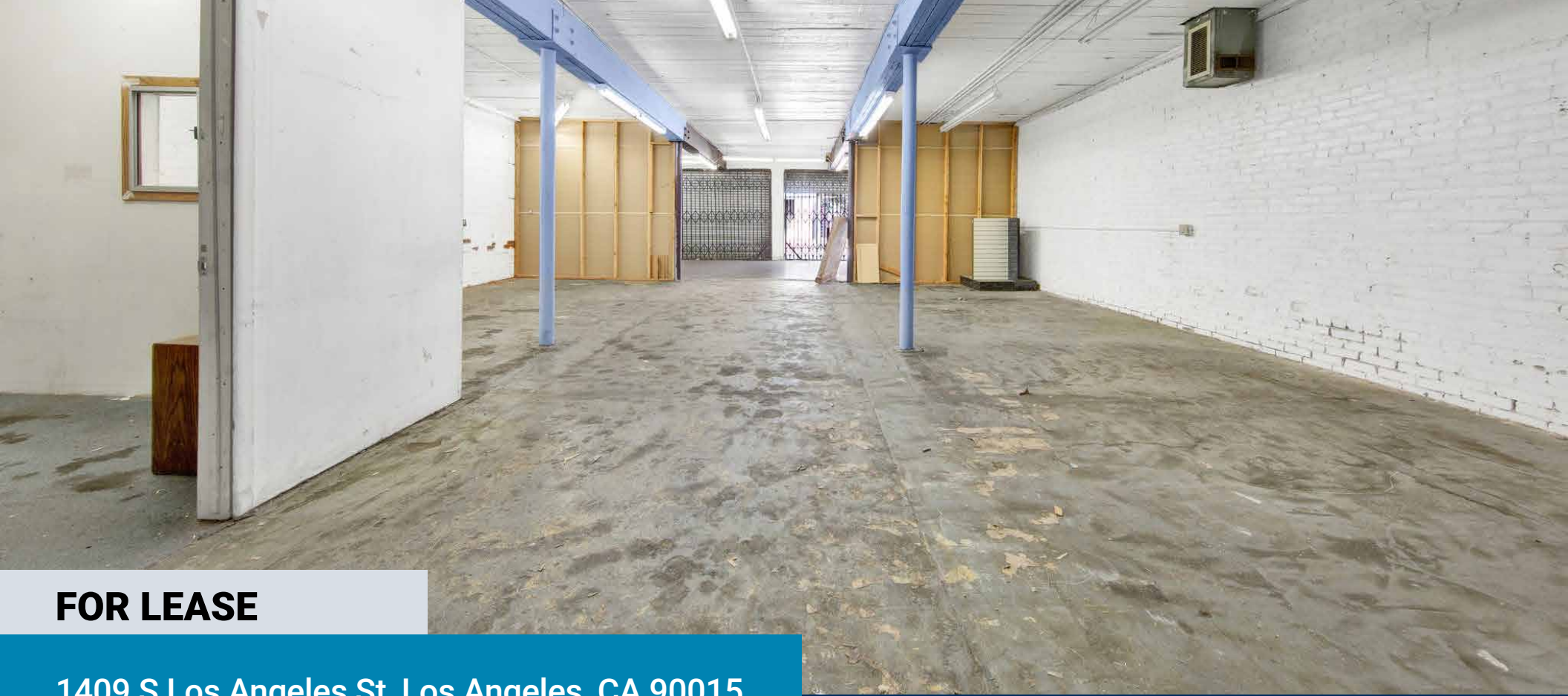
Interior



Interior

Local & Zoning Maps





FOR LEASE

1409 S Los Angeles St, Los Angeles, CA 90015

Downtown Los Angeles Location

±8,800 SF Stand-Alone Warehouse/Retail Building

**FOR MORE INFORMATION,
PLEASE CONTACT:**

BRYAN ABAYAN | ASSOCIATE VICE PRESIDENT

D: 310.883.8476

BABAYAN@DAUMCRE.COM

CADRE #02005294

D/AQ Corp. #01129558. Maps Courtesy ©Google & ©Microsoft. Although all information is furnished regarding for sale, rental or financing is from sources deemed reliable, such information has not been verified and no express representation is made nor is any to be implied as to the accuracy thereof, and it is submitted subject to errors, omissions, changes of price, rental or other conditions, prior sale, lease or financing, or withdrawal without notice.

