

FOR SALE

# 5305 Snapfinger Woods Dr

DECATUR, GA 30035

58,814 SF | LIGHT DISTRIBUTION WAREHOUSE



FOR MORE  
INFORMATION:

**TREY TUMLIN**

*Director*

[ttumlin@lee-associates.com](mailto:ttumlin@lee-associates.com)

O: 404.442.2828

**MICHAEL SUTTER, SIOR**

*Executive VP / Principal*

[msutter@lee-associates.com](mailto:msutter@lee-associates.com)

O: 404.442.2804

**LEE &  
ASSOCIATES**  
COMMERCIAL REAL ESTATE SERVICES

# Property Highlights

## BUILDING SIZE

58,814 SF

## LOADING

7 Dock High Doors (8'w x 10'h)

## OFFICE SF

± 40,000 SF

## CLEAR HEIGHT

20' Clear Height

## LAND

3.57 AC

## COLUMN SPACING

32' x 52'

## POWER

Heavy (3,400a/480v 3p)

## YEAR BUILT

1973/2007

## PARKING

70 Auto Spaces

## FENCED TRUCK COURT

Yes

## SPRINKLER

Wet

## ZONING

M-1



**FOR MORE  
INFORMATION:**

### TREY TUMLIN

*Director*

[ttumlin@lee-associates.com](mailto:ttumlin@lee-associates.com)

O: 404.442.2828

### MICHAEL SUTTER, SIOR

*Executive VP / Principal*

[msutter@lee-associates.com](mailto:msutter@lee-associates.com)

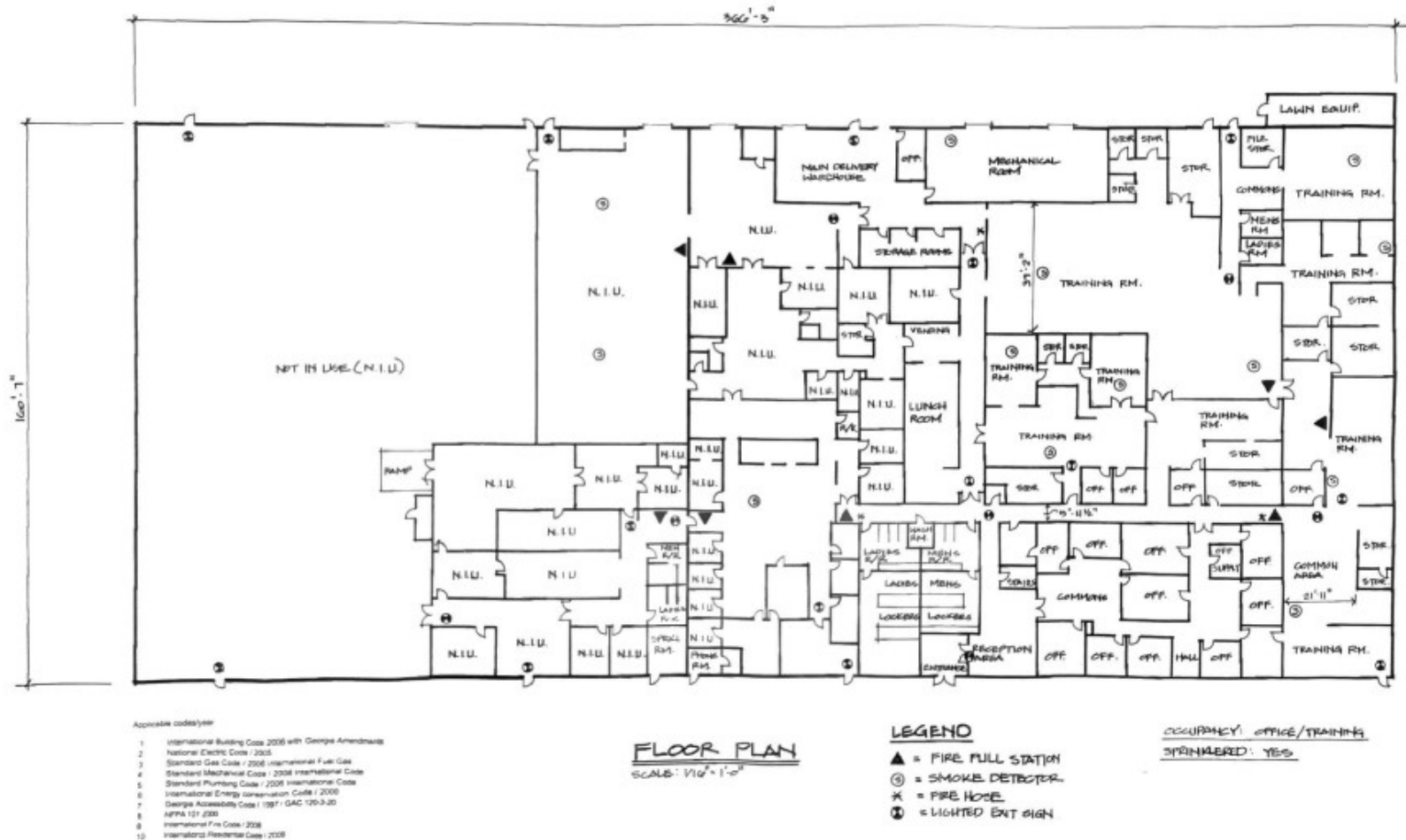
O: 404.442.2804

# Floor Plan

Location Highlights

Property Specifications

Property Summary



FOR MORE  
INFORMATION:

**TREY TUMLIN**

Director

ttumlin@lee-associates.com

O: 404.442.2828

**MICHAEL SUTTER, SIOR**

Executive VP / Principal





msutter@lee-associates.com

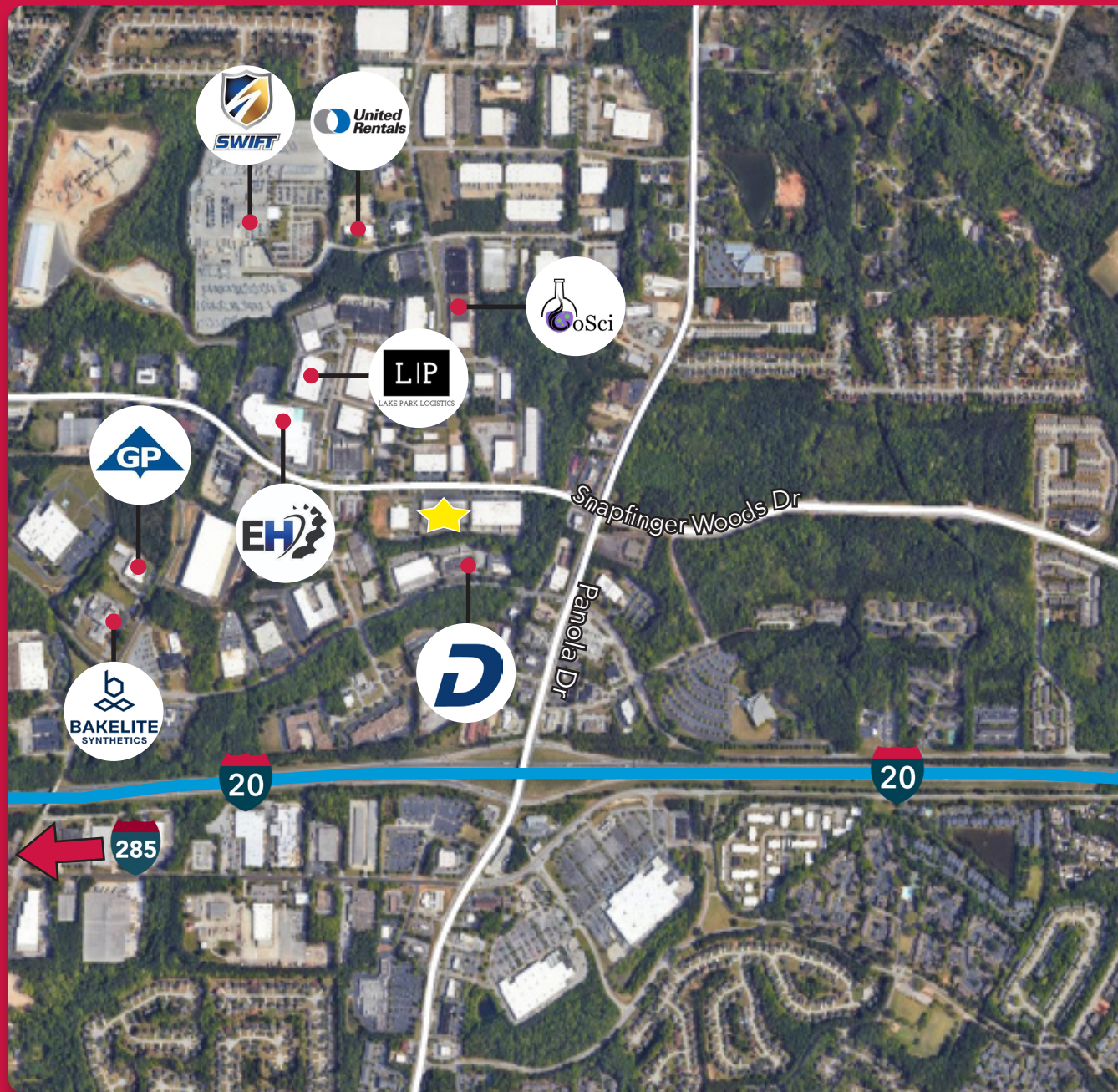
O: 404.442.2804

**LEE & ASSOCIATES**  
COMMERCIAL REAL ESTATE SERVICES

# Location Highlights

## KEY DISTANCES

- ★ 5305 Snapfinger Woods Dr
-  0.6 miles (via Panola Rd)
-  4.7 miles (via I-20)
-  0.3 miles (1 min) to Panola Rd.
-  28 mins to Hartsfield Jackson Atlanta International Airport



**FOR MORE  
INFORMATION:**

**TREY TUMLIN**

Director  
ttumlin@lee-associates.com  
O: 404.442.2828

**MICHAEL SUTTER, SIOR**

Executive VP / Principal  
msutter@lee-associates.com  
O: 404.442.2804

**LEE &  
ASSOCIATES**  
COMMERCIAL REAL ESTATE SERVICES